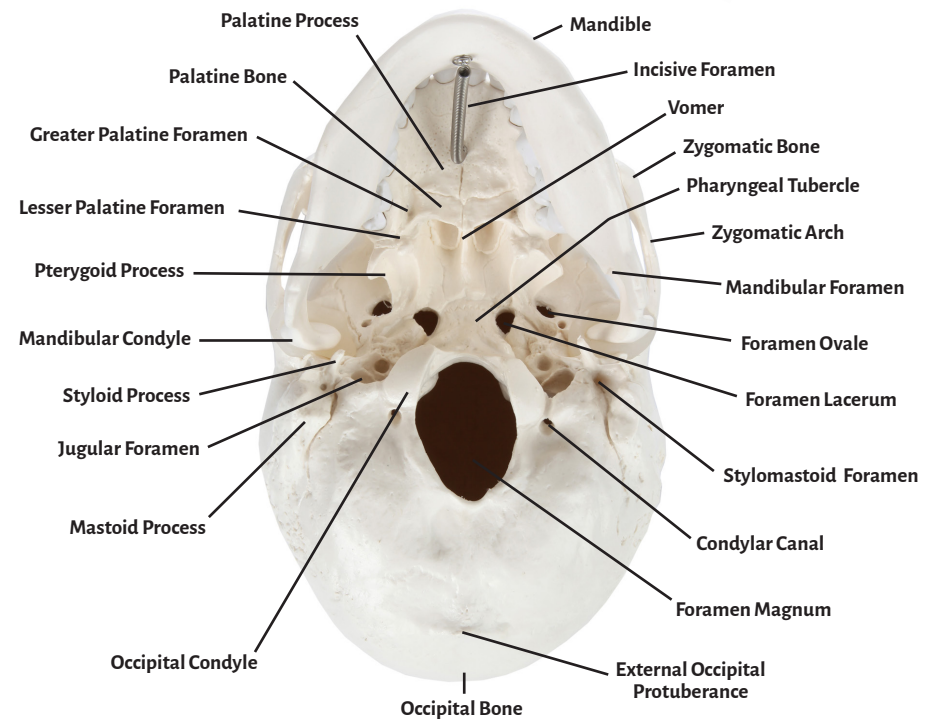
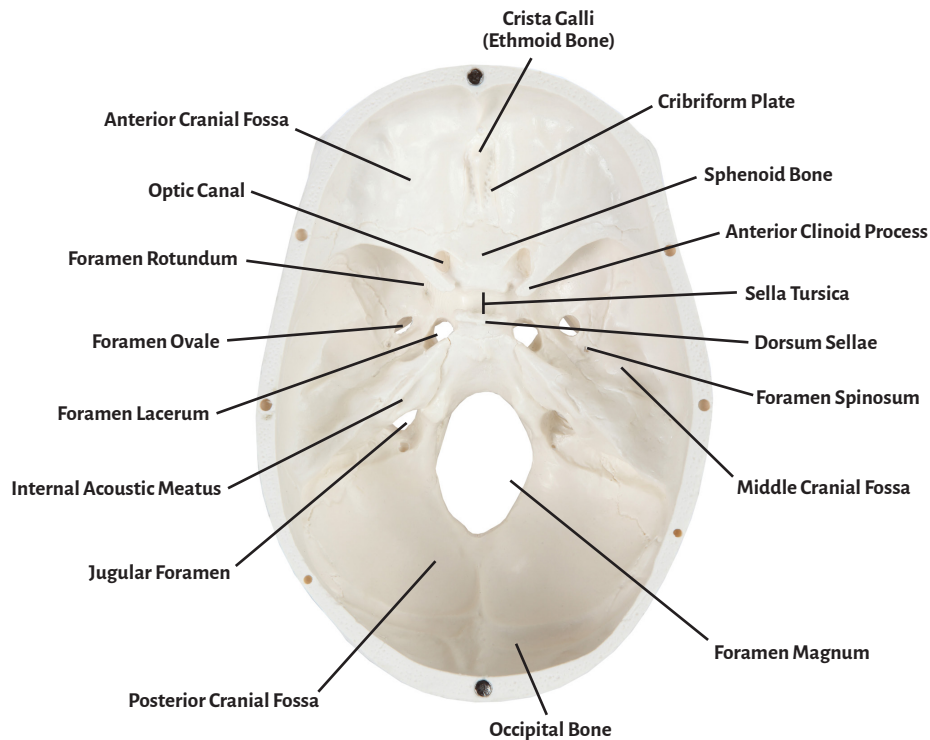
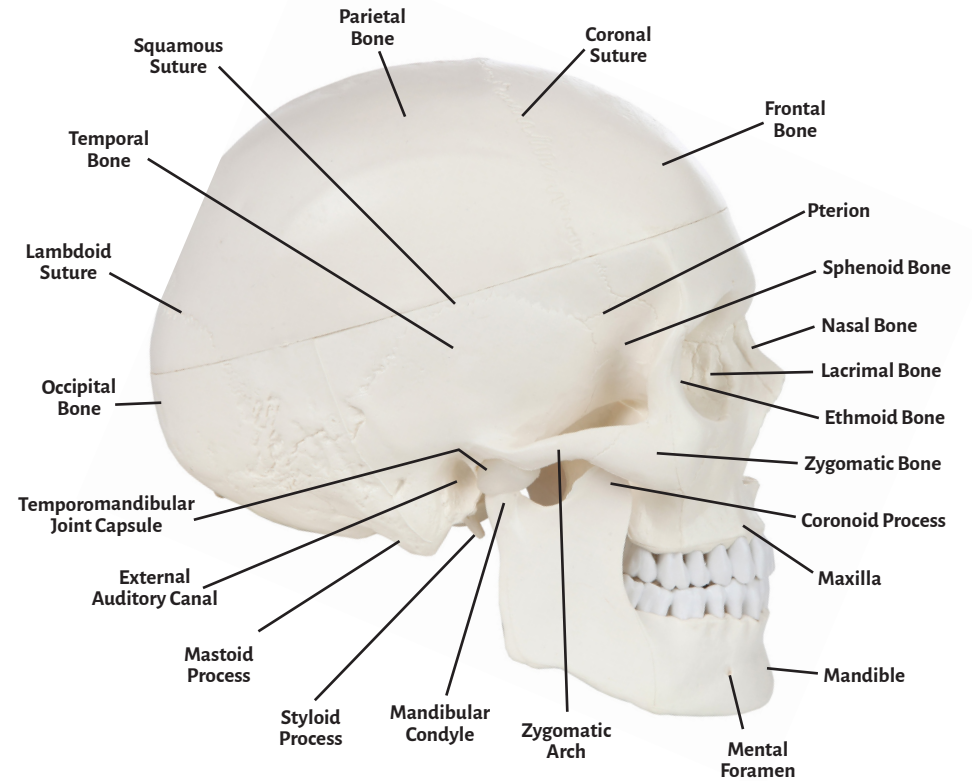
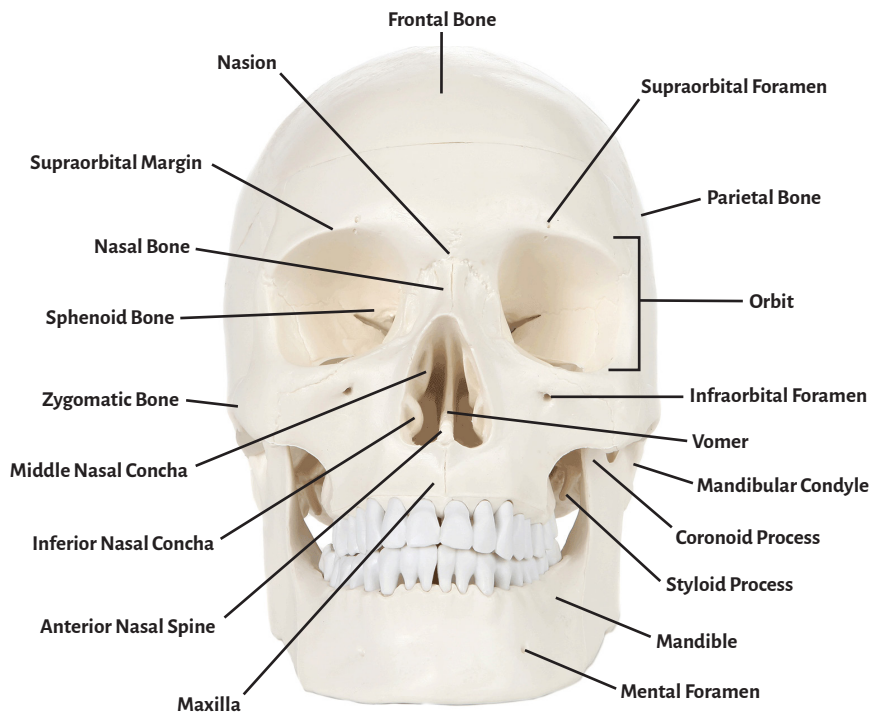
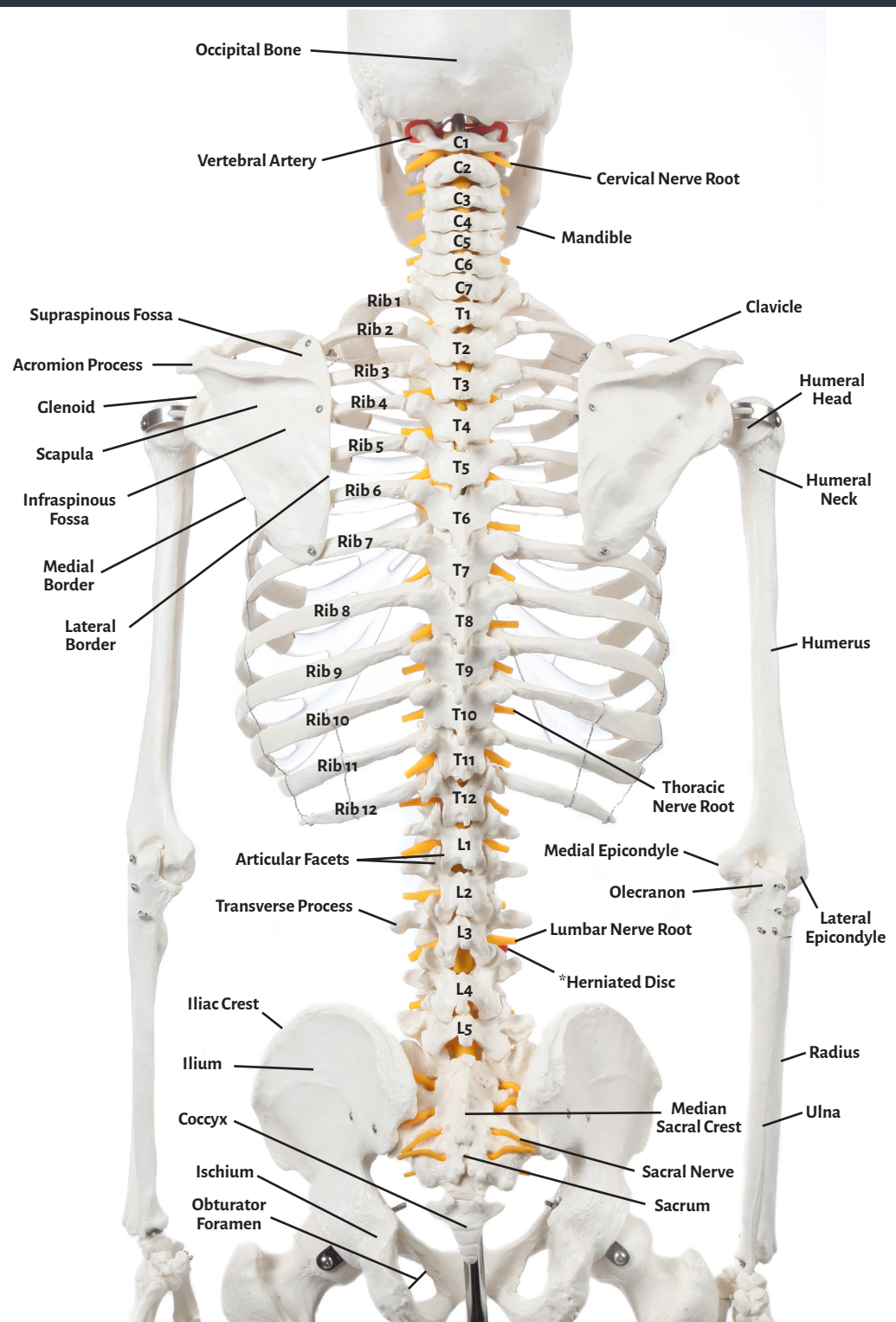
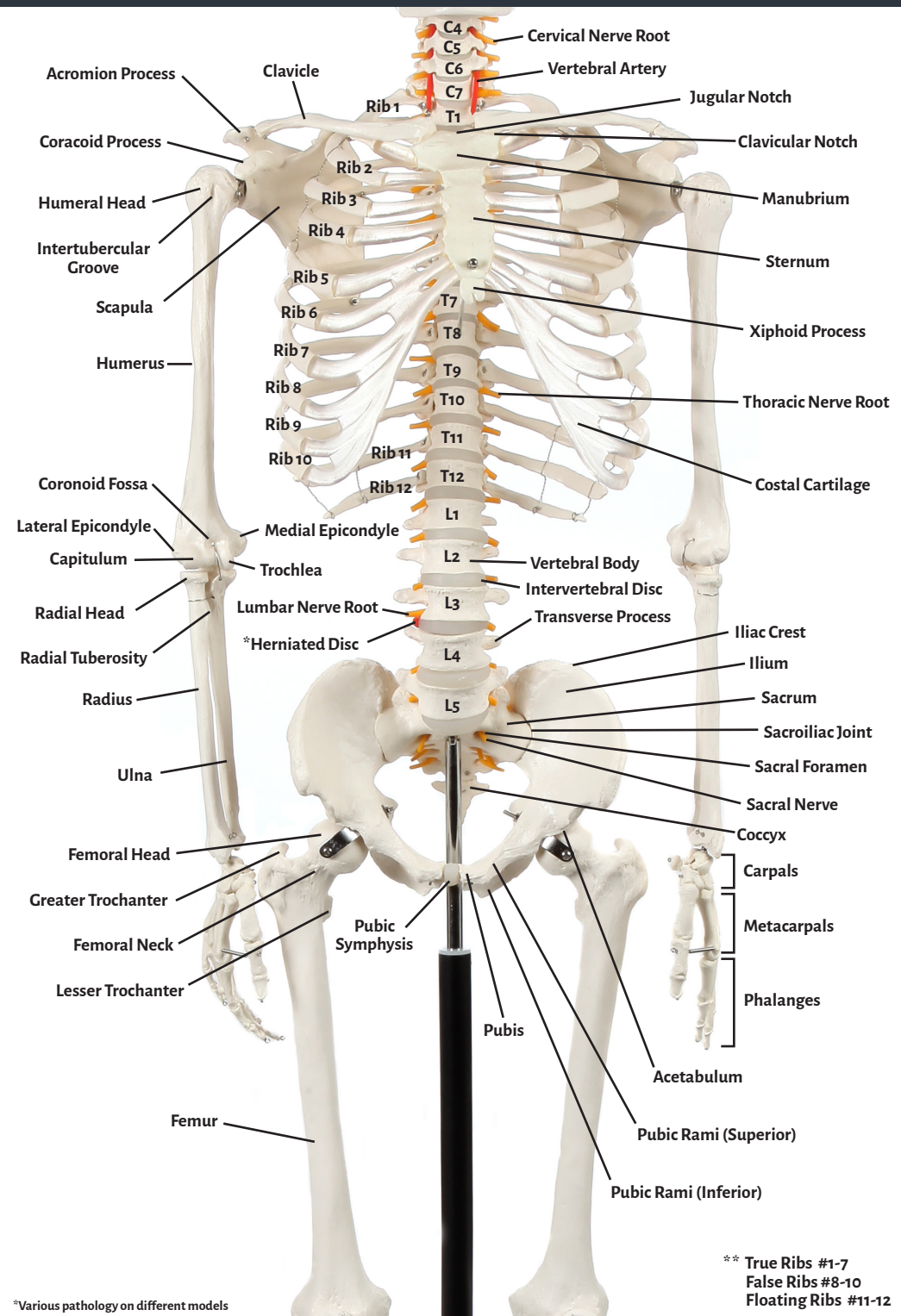




Axis Scientific Classic Human Skeletons

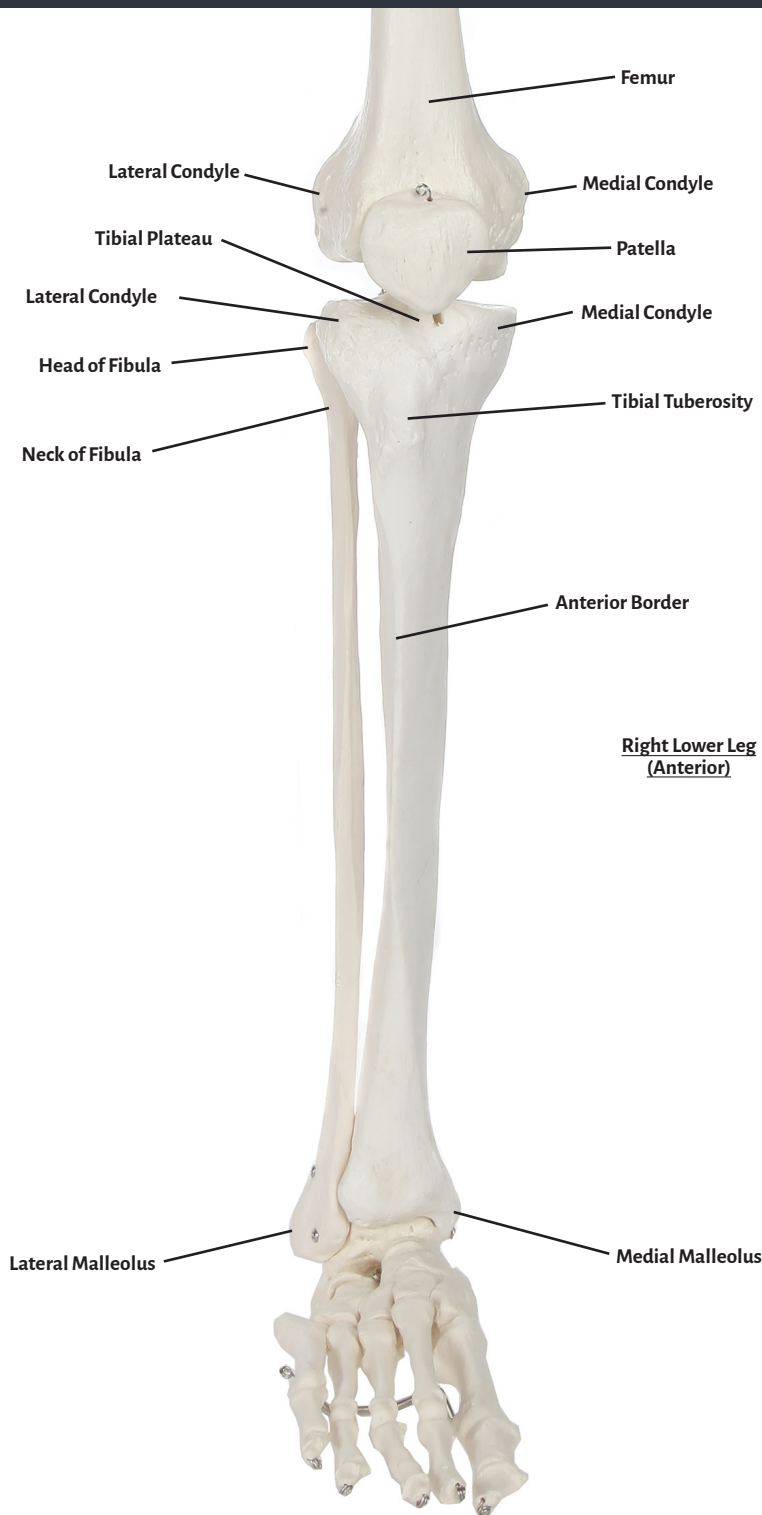
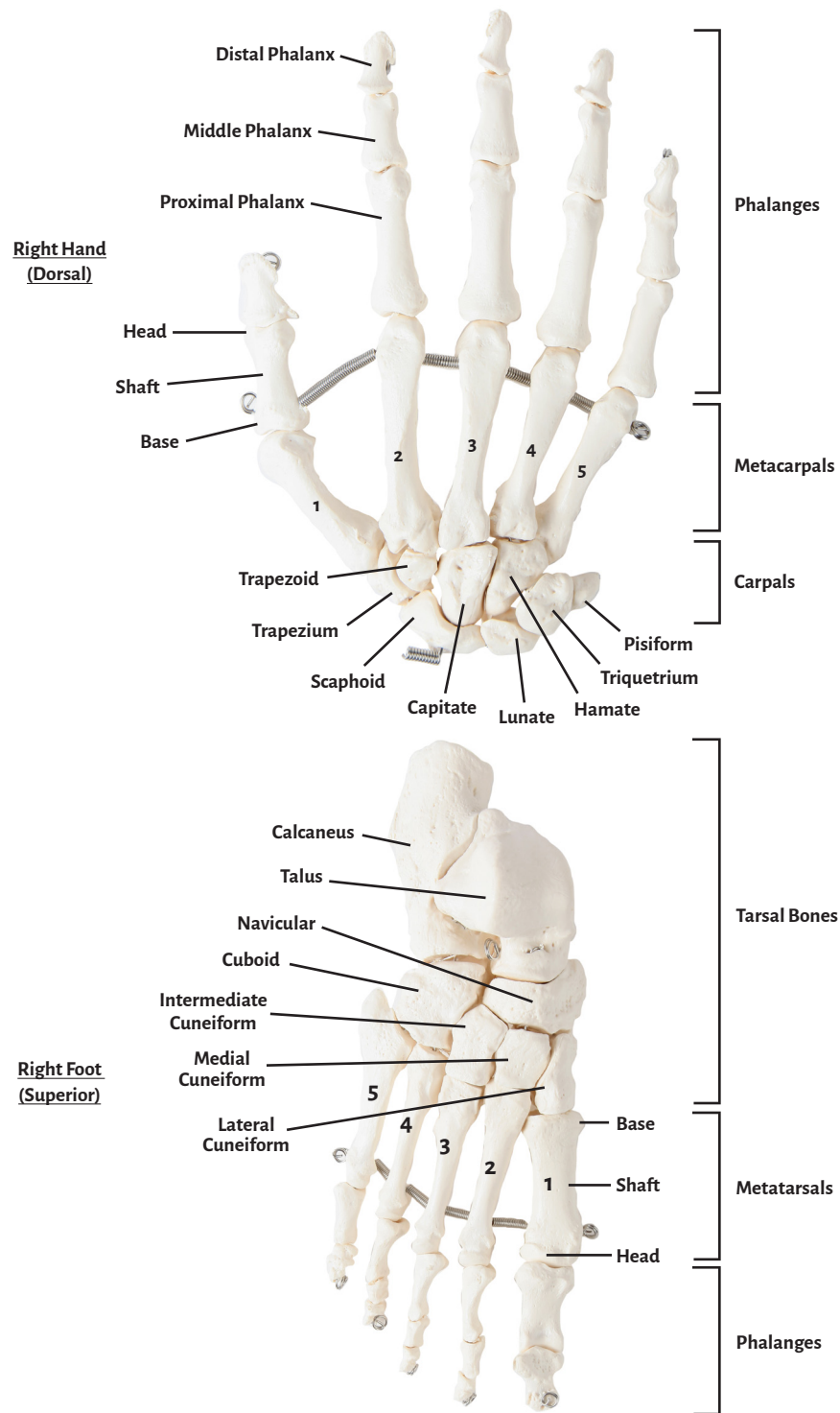
A-106888, A-104267, A-105852





** True Ribs #1-7
 False Ribs #8-10
 Floating Ribs #11-12

*Various pathology on different models



Human Body (206)

Axial Skeleton (80)

Appendicular Skeleton (126)

Skull (28)		Torso (52)		Lower Extremity (31 x 2 = 62)		Upper Extremity (32 x 2 = 64)	
Paired Bones (12 x 2 = 24)		Paired Bones (12 x 2 = 24)					
Nasal Lacrimal Inferior Nasal Concha Maxillary Zygomatic Temporal Palatine Parietal Malleus Incus Stapes		Hyoid Sternum C1 (atlas) C2 (axis) C3 C4 C5 C6 C7 T1 T2 T3 T4 T5 T6 T7 T8 T9 T10 T11 T12 L1 L2 L3 L4 L5 Sacrum Coccyx					
Frontal Ethmoid Vomer Sphenoid Mandible Occipital		Rib 1 Rib 2 Rib 3 Rib 4 Rib 5 Rib 6 Rib 7 Rib 8 (False) Rib 9 (False) Rib 10 (False) Rib 11 (Floating) Rib 12 (Floating)		Scapula Clavicle Humerus Radius Ulna Scaphoid Lunate Triquetrum Pisiform Hamate Capitate Trapezoid Trapezium Metacarpal 1 Proximal Phalange 1 Distal Phalange 1 Metacarpal 2 Proximal Phalange 2 Middle Phalange 2 Distal Phalange 2 Metacarpal 3 Proximal Phalange 3 Middle Phalange 3 Distal Phalange 3 Metacarpal 4 Proximal Phalange 4 Middle Phalange 4 Distal Phalange 4 Metacarpal 5 Proximal Phalange 5 Middle Phalange 5 Distal Phalange 5		Hip (Ilium, Ischium, Pubis) Femur Patella Tibia Fibula Talus Calcaneus Navicular Medial Cuneiform Middle Cuneiform Lateral Cuneiform Cuboid Metatarsal 1 Proximal Phalange 1 Distal Phalange 1 Metatarsal 2 Proximal Phalange 2 Middle Phalange 2 Distal Phalange 2 Metatarsal 3 Proximal Phalange 3 Middle Phalange 3 Distal Phalange 3 Metatarsal 4 Proximal Phalange 4 Middle Phalange 4 Distal Phalange 4 Metatarsal 5 Proximal Phalange 5 Middle Phalange 5 Distal Phalange 5	

