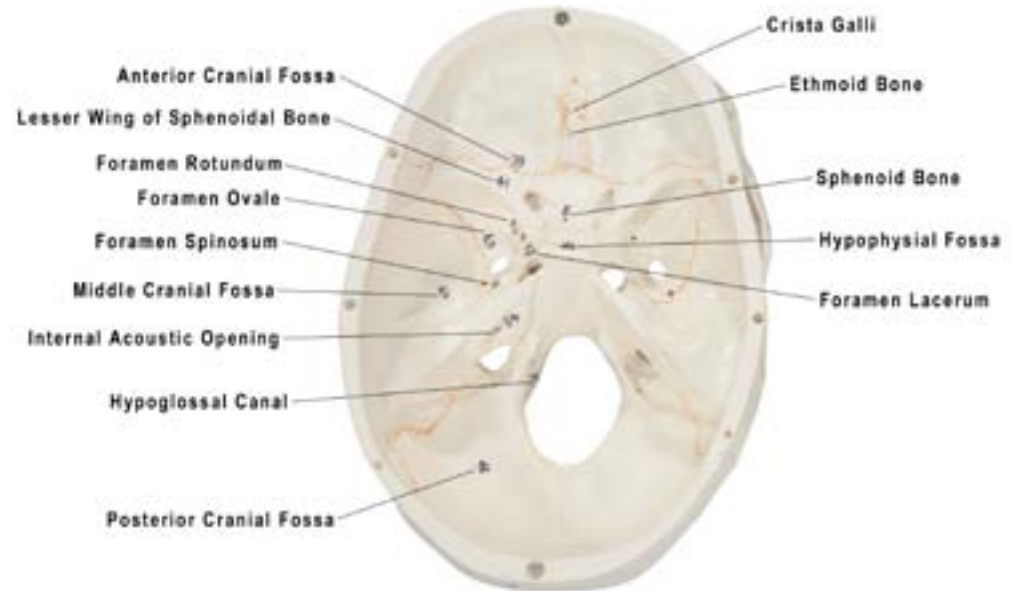
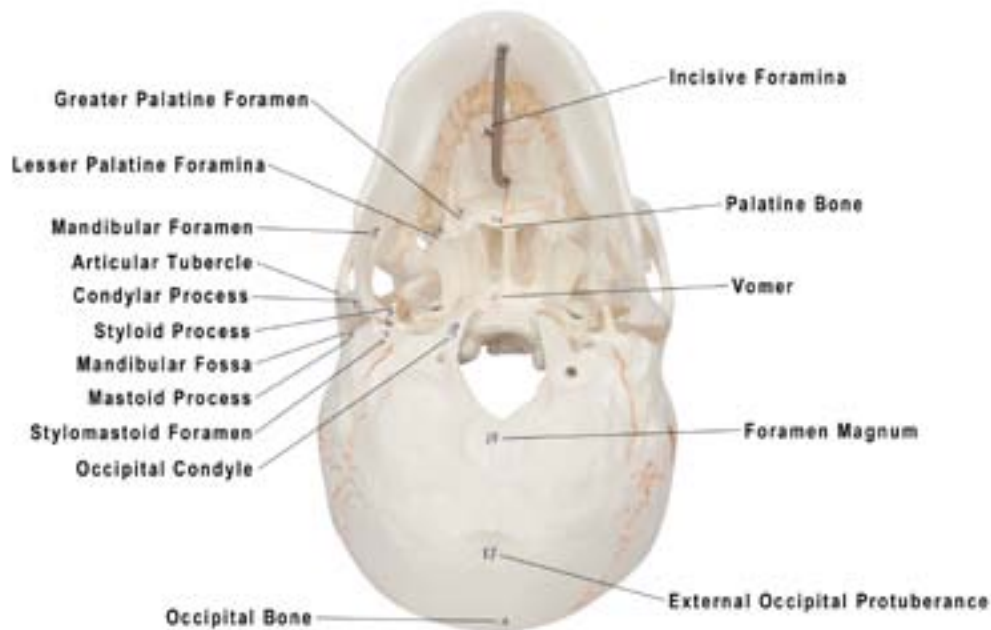
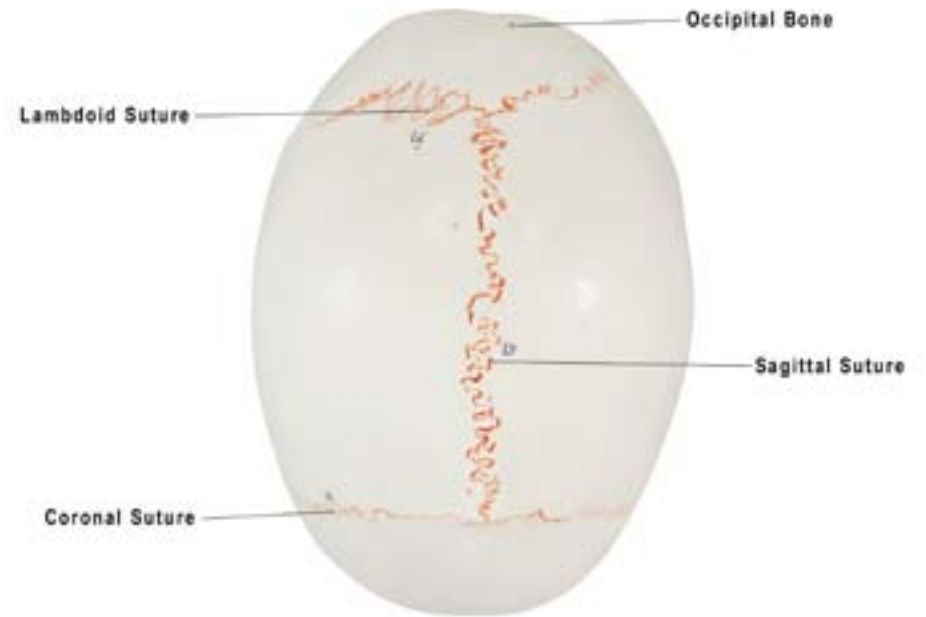
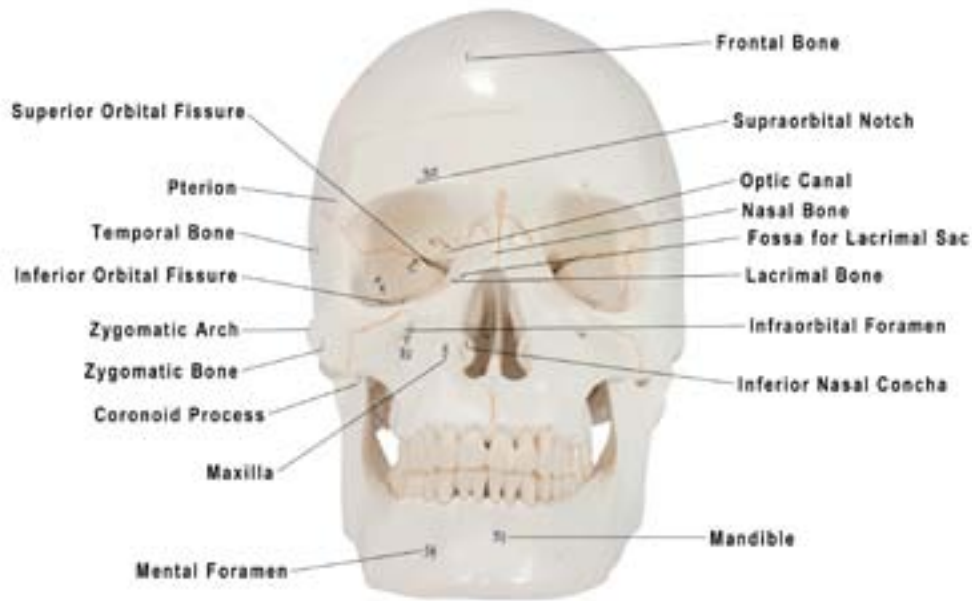




Axis Scientific 3-Part Life-Size Numbered Human Skull

A-104270



1. Frontal Bone
2. Parietal Bone
3. Occipital Bone
4. Temporal Bone
5. Ethmoid Bone
6. Sphenoid Bone
7. Nasal Bone
8. Maxilla
9. Lacrimal Bone
10. Zygomatic Bone
11. Vomer
12. Inferior Nasal Concha
13. Palatine Bone
14. Coronal Suture
15. Sagittal Suture
16. Lambdoid Suture
17. External Occipital Protuberance
18. Foramen Magnum
19. Occipital Condyle
20. Jugular Foramen
21. Carotid Canal External Opening
22. Styloid Process
23. Mastoid Process
24. Stylomastoid Foramen
25. External Acoustic Meatus
26. Mandibular Fossa
27. Articular Tubercle
28. Zygomatic Arch
29. Pterion
30. Supraorbital Notch
31. Superior Orbital Fissure
32. Inferior Orbital Fissure
33. Optic Canal
34. Fossa for Lacrimal Sac
35. Infraorbital Foramen
36. Incisive Foramen
37. Greater Palatine Foramen
38. Lesser Palatine Foramina
39. Anterior Cranial Fossa
40. Crista Galli
41. Lesser Wing of Sphenoidal Bone
42. Middle Cranial Fossa
43. Hypophysial Fossa
44. Foramen Rotundum
45. Foramen Ovale
46. Foramen Spinosum
47. Foramen Lacerum
48. Posterior Cranial Fossa
49. Internal Acoustic Opening
50. Hypoglossal Canal
51. Mandible
52. Coronoid Process
53. Condylar Process
54. Mental Foramen
55. Mandibular Foramen

