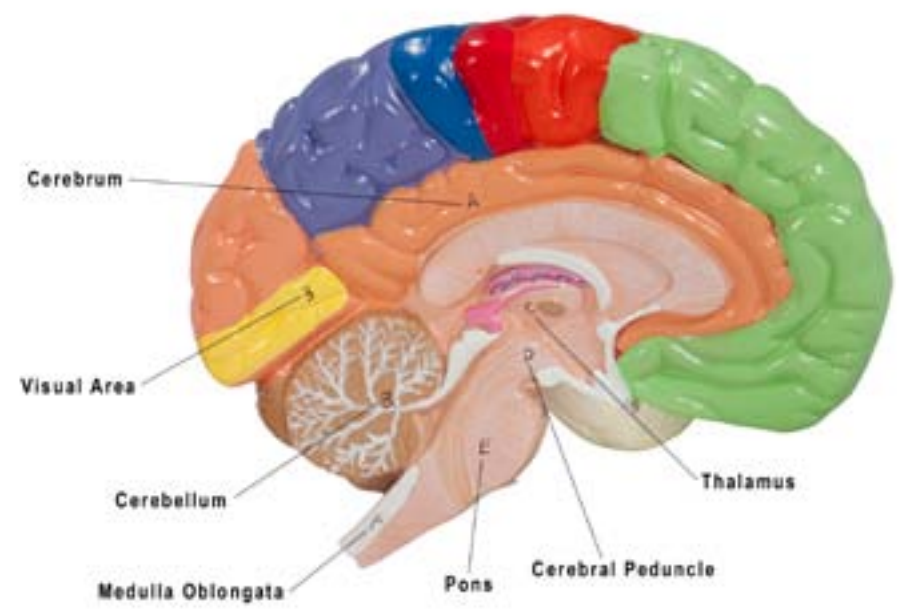
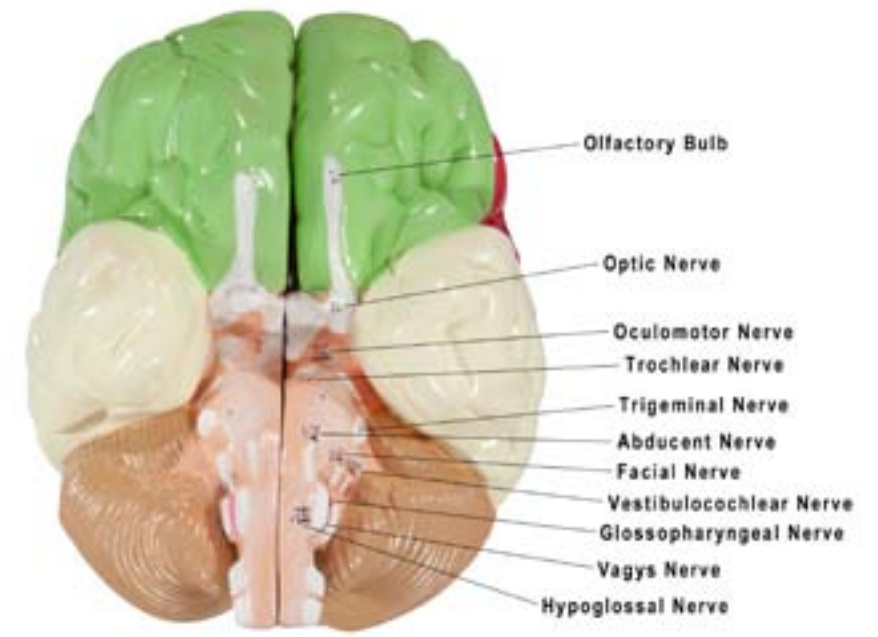
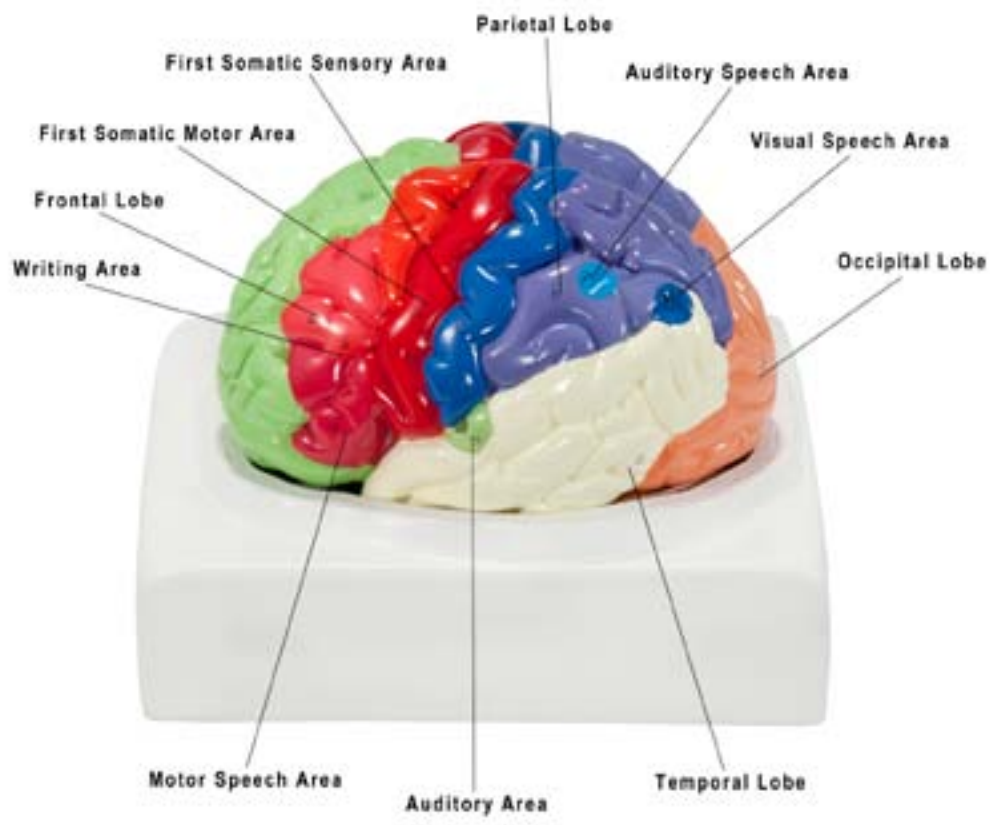




Axis Scientific Life-Size Regional 2-Part Human Brain

A-104278



A. Cerebrum

- a. Frontal Lobe
- b. Parietal Lobe
- c. Temporal Lobe
- d. Occipital Lobe
- 1. First Somatic Motor Area
- 2. First Somatic Sensory Area
- 3. Visual Area
- 4. Auditory Area
- 5. Motor Speech Area
- 6. Writing Area
- 7. Auditory Speech Area
- 8. Visual Speech Area

B. Cerebellum

C. Thalamus

D. Cerebral Peduncle

E. Pons

F. Medulla Oblongata

I. Olfactory Bulb

II. Optic Nerve

III. Oculomotor Nerve

IV. Trochlear Nerve

V. Trigeminal Nerve

VI. Abducent Nerve

VII. Facial Nerve

VIII. Vestibulocochlear Nerve

IX. Glossopharyngeal Nerve

X. Vagus Nerve

XI. Accessory Nerve

XII. Hypoglossal Nerve

