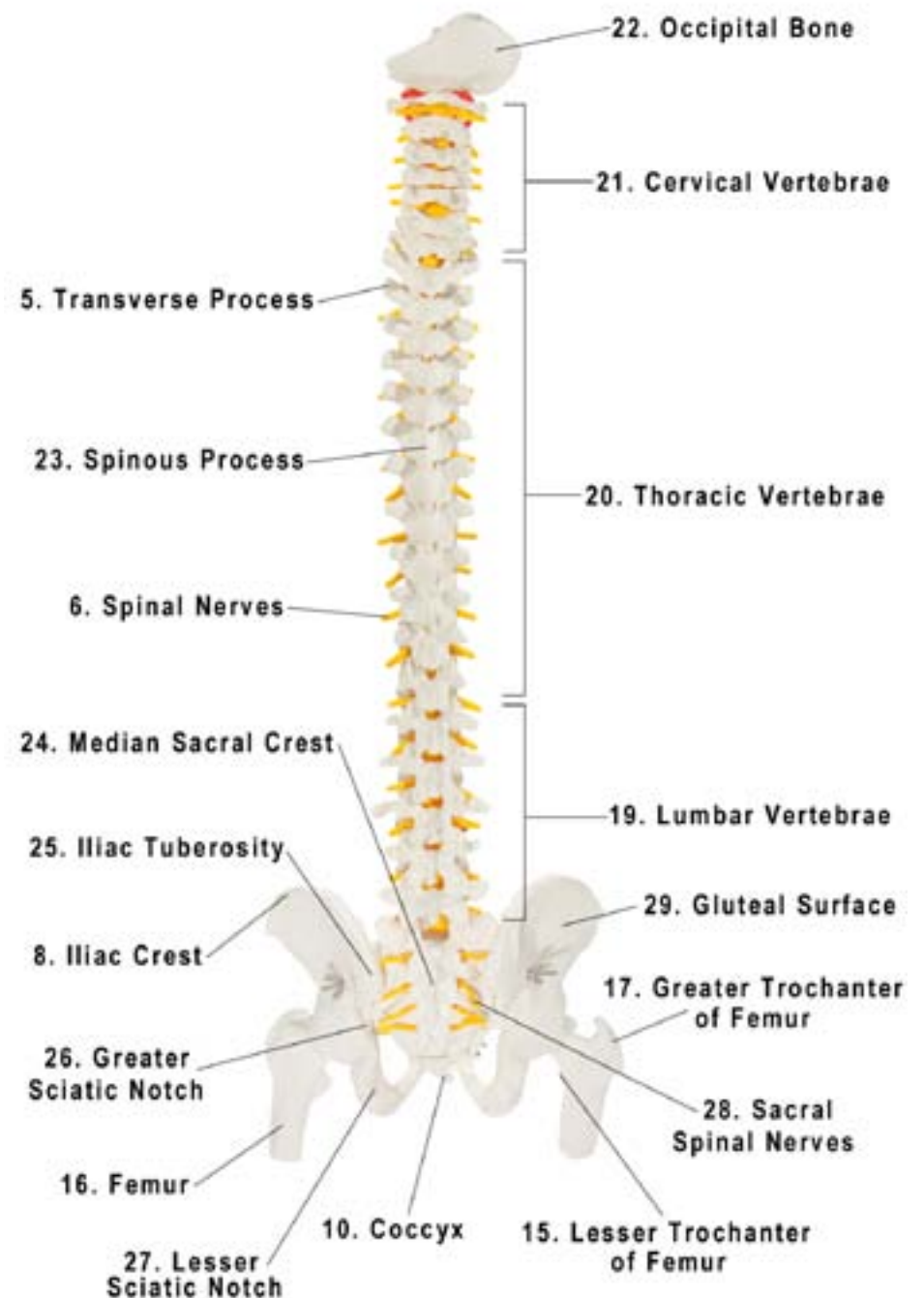
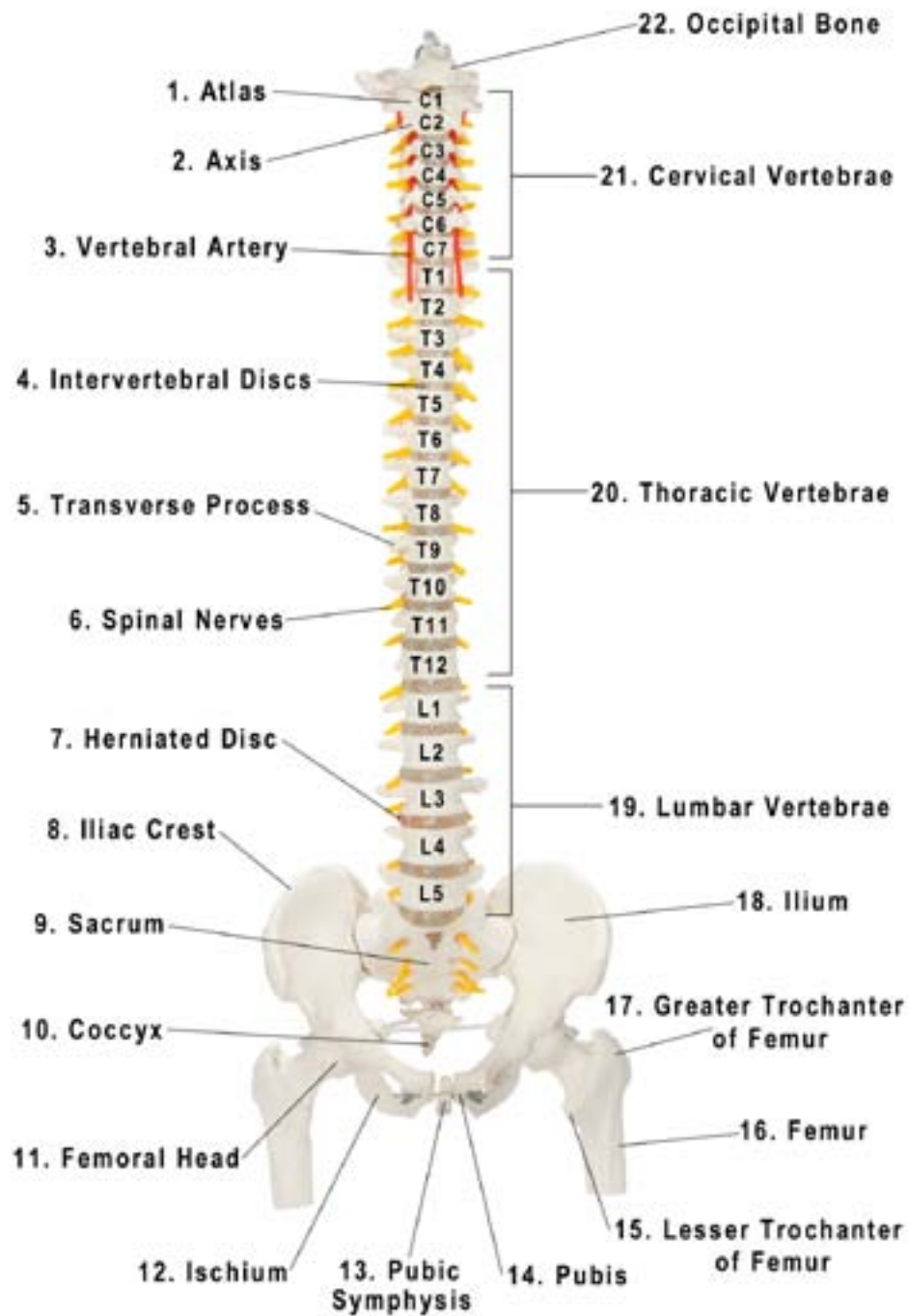




Axis Scientific Premium Flexible Vertebral Column

A-104282



1. Atlas
2. Axis
3. Vertebral Artery
4. Intervertebral Discs
5. Transverse Process
6. Spinal Nerves
7. Herniated Disc
8. Iliac Crest
9. Sacrum
10. Coccyx
11. Femoral Head
12. Ischium
13. Pubic Symphysis
14. Pubis
15. Lesser Trochanter of Femur
16. Femur
17. Greater Trochanter of Femur
18. Ilium
19. Lumbar Vertebrae
20. Thoracic Vertebrae
21. Cervical Vertebrae
22. Occipital Bone
23. Spinous Process
24. Median Sacral Crest
25. Iliac Tuberosity
26. Greater Sciatic Notch
27. Lesser Sciatic Notch
28. Sacral Spinal Nerves
29. Gluteal Surface

