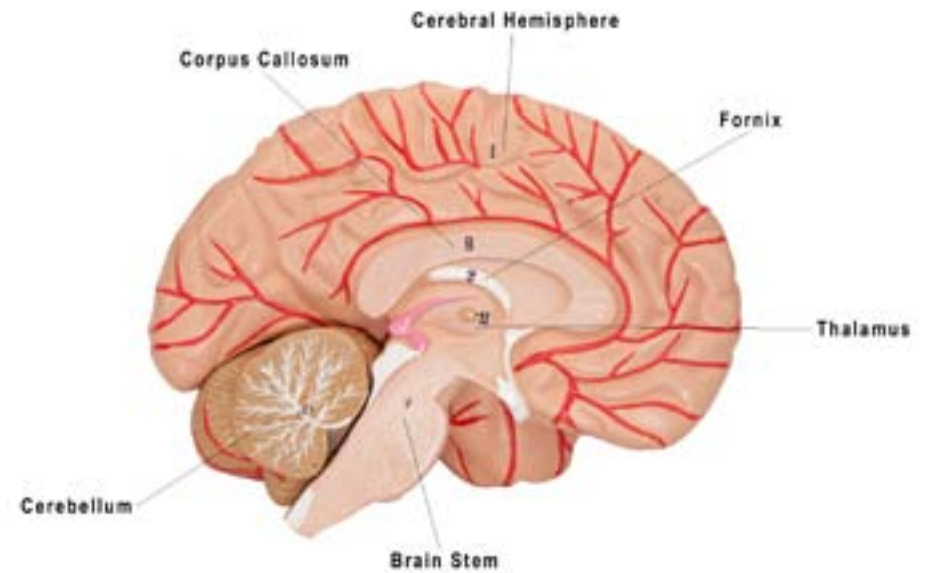
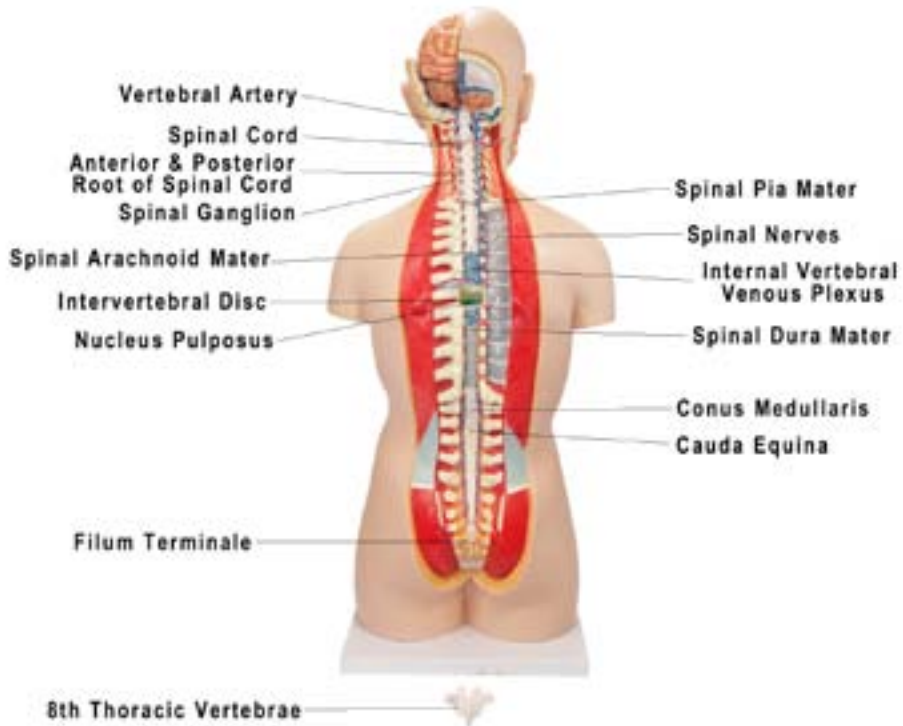
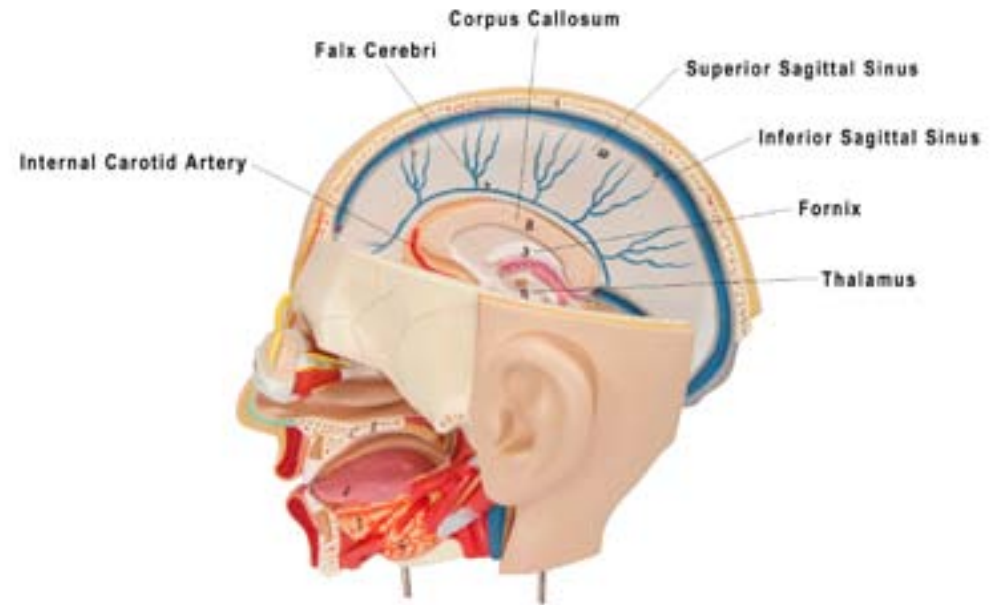
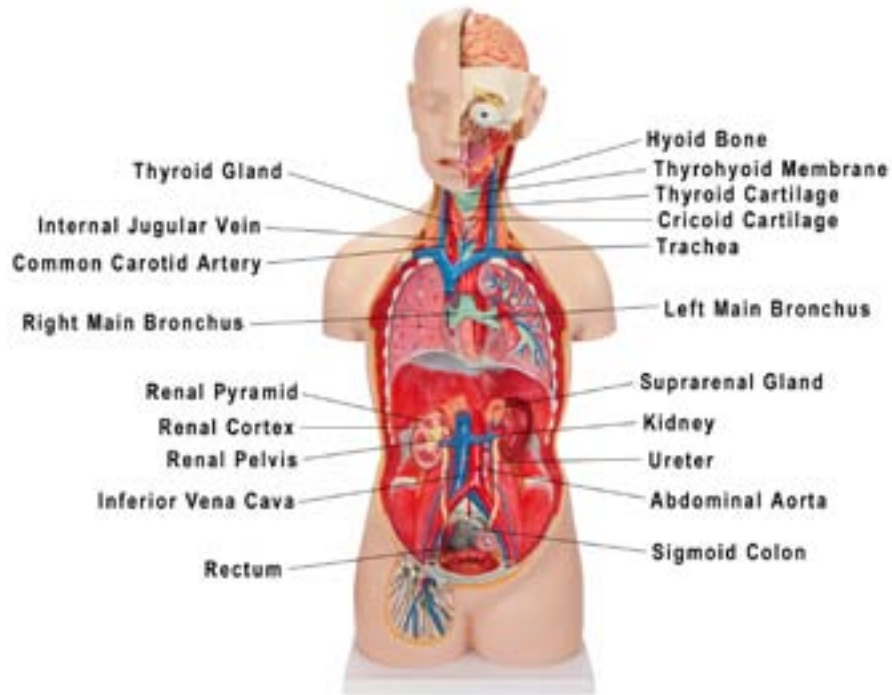
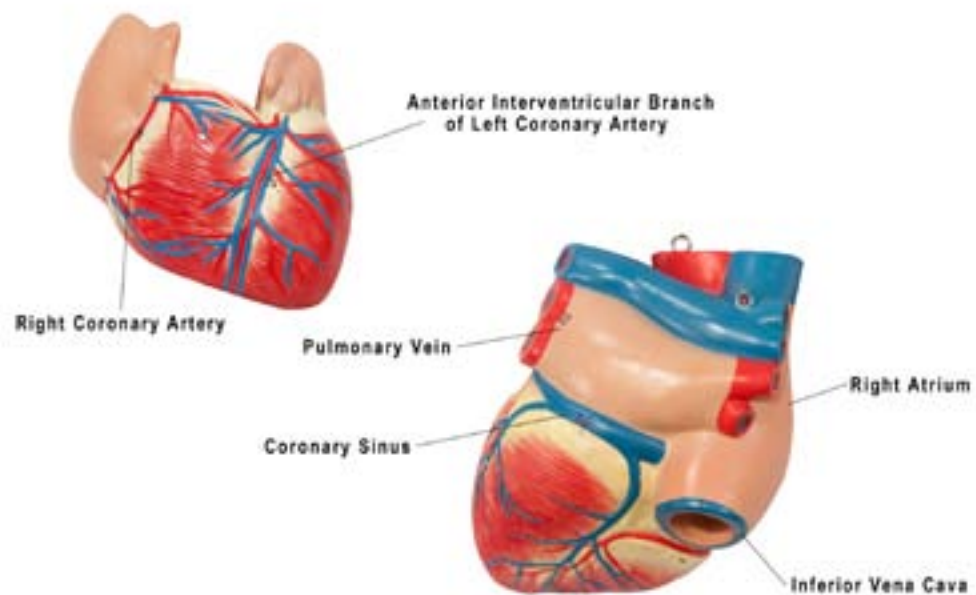
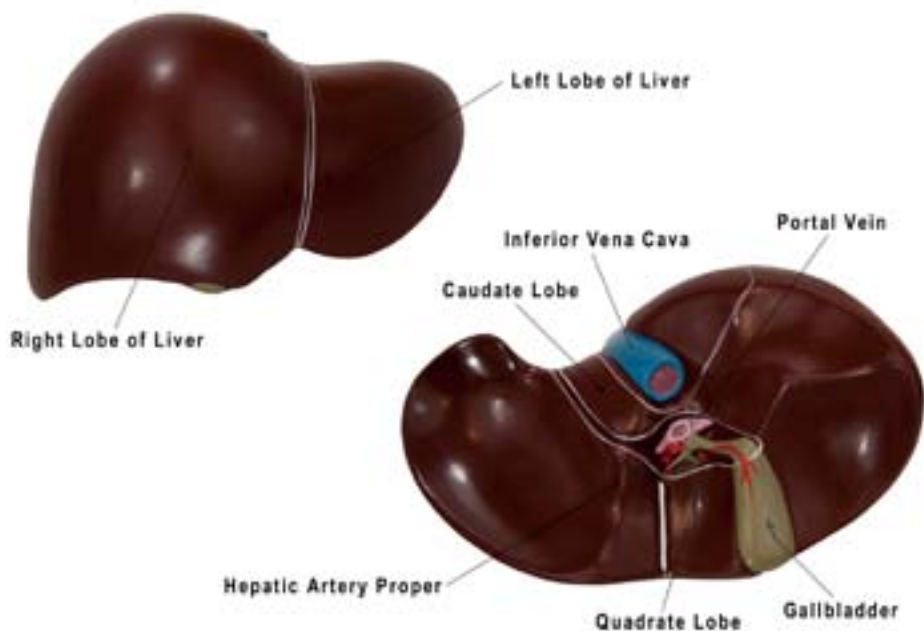
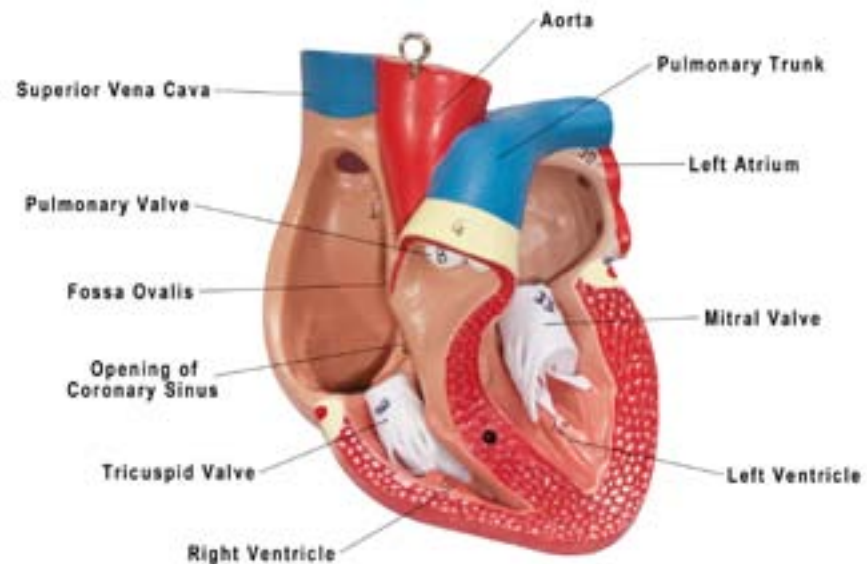
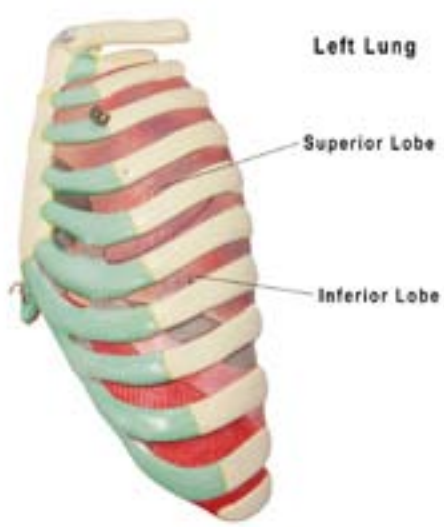
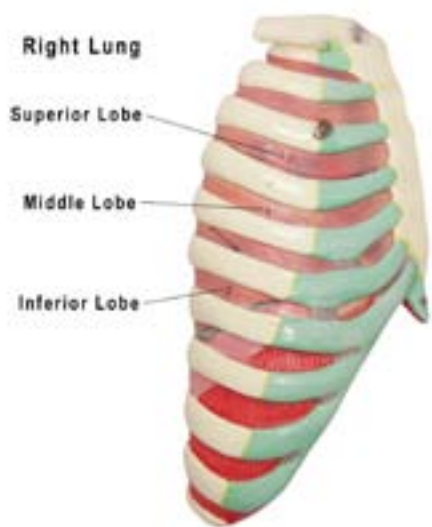


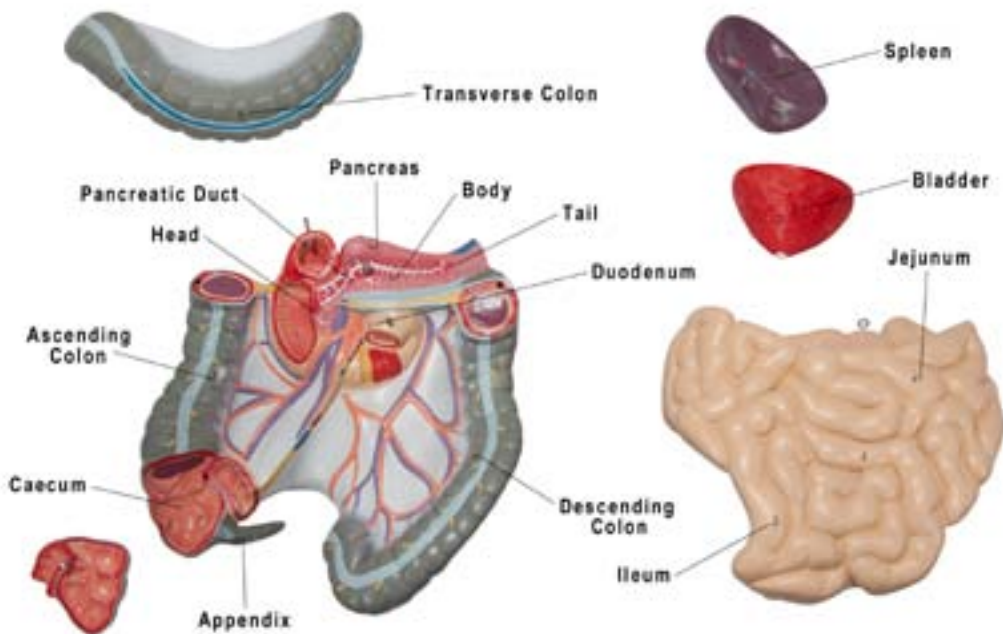
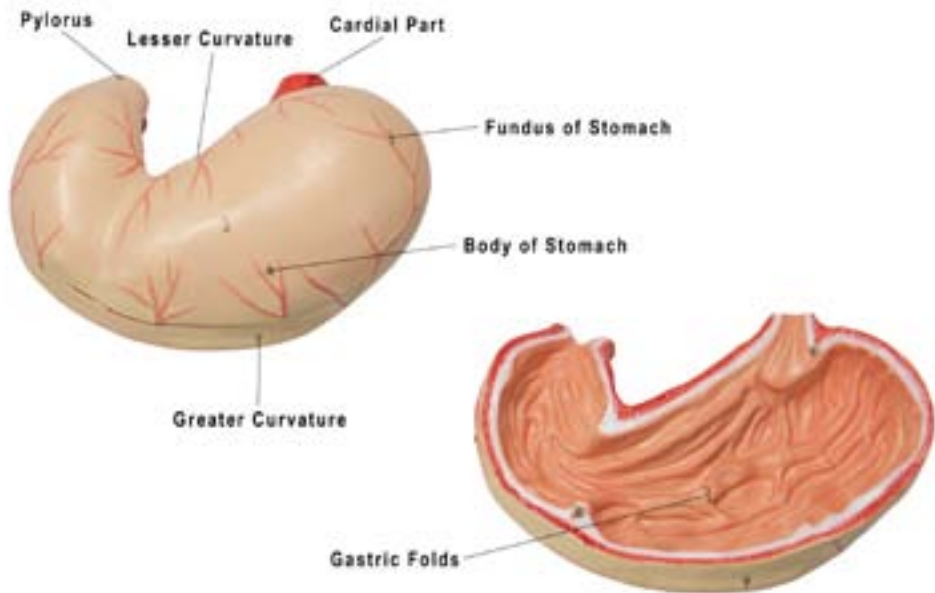


**Axis Scientific 18-Part Premium Unisex Life-Size Torso With Open Back**

**A-104283**







### A. Cranial Cavity

1. Cerebral Hemisphere
2. Internal Carotid Artery
3. Cerebellum
4. Brain Stem
5. Falx Cerebri (Cerebral Fax)
6. Superior Sagittal Sinus
7. Straight Sinus
8. Corpus Callosum
9. Fornix
10. Inferior Sagittal Sinus
11. Thalamus

### B. Eyeball

### C. Oral Cavity

1. Palate
2. Tongue
3. Pharynx
4. Parotid Gland
5. Sublingual Gland
6. Submandibular Gland

### D. Neck Region

1. Hyoid Bone
2. Thyrohyoid Membrane
3. Thyroid Cartilage
4. Cricoid Cartilage
5. Thyroid Gland
6. Trachea
7. Common Carotid Artery
8. Internal Jugular Vein

### E. Left Lung with Rib Cage

### F. Right Lung with Rib Cage

1. Left Lung; Superior Lobe
2. Left Lung; Inferior Lobe
3. Right Lung; Superior Lobe
4. Right Lung; Middle Lobe
5. Right Lung; Inferior Lobe
6. Left Main Bronchus
7. Right Main Bronchus

### G. Heart

1. Right Atrium
2. Superior Vena Cava
3. Inferior Vena Cava
4. Fossa Ovalis (Oval Fossa)
5. Opening of Coronary Sinus
6. Right Ventricle
7. Pulmonary Trunk
8. Pulmonary Valve
9. Tricuspid Valve
10. Left Atrium
11. Pulmonary Vein
12. Left Ventricle
13. Mitral Valve
14. Aorta
15. Aortic Valve
16. Coronary Sinus
17. Left Coronary Artery
18. Right Coronary Artery
19. Anterior Interventricular Branch of Left Coronary Artery

### H. Oesophagus

### I. Liver

1. Left Lobe of Liver
2. Right Lobe of Liver
3. Caudate Lobe
4. Quadrate Lobe
5. Inferior Vena Cava
6. Gallbladder
7. Portal Vein

## **N. Spleen**

### **J. Stomach**

1. Cardial Part
2. Pylorus
3. Fundus of Stomach
4. Body of Stomach
5. Lesser Curvature
6. Greater Curvature
7. Gastric Folds

### **K. Intestine**

1. Duodenum
2. Jejunum
3. Ileum
4. Caecum
5. Appendix
6. Ascending Colon
7. Transverse Colon
8. Descending Colon
9. Sigmoid Colon
10. Rectum

### **L. Lumbar Vertebrae**

### **M. Pancreas**

1. Head
2. Body
3. Tail
4. Pancreatic Duct

## **O. Lumbar Region**

1. Kidney
2. Suprarenal Gland
3. Renal Cortex
4. Renal Pyramids
5. Renal Pelvis
6. Ureter
7. Inferior Vena Cava
8. Abdominal Aorta

## **P. Pelvic Cavity**

1. Bladder

## **Q. Back**

1. Spinal cord
2. Anterior And Posterior Root of Spinal Cord
3. Spinal Ganglion
4. Spinal Nerves
5. Conus Medullaris
6. Cauda Equina
7. Filum Terminale
8. Spinal Dura Mater
9. Spinal Arachnoid Mater
10. Spinal Pia Mater
11. Vertebral Artery
12. Intervertebral Disc
13. Nucleus Pulposus
14. Internal Vertebral Venous Plexus
15. 8th Thoracic Vertebrae