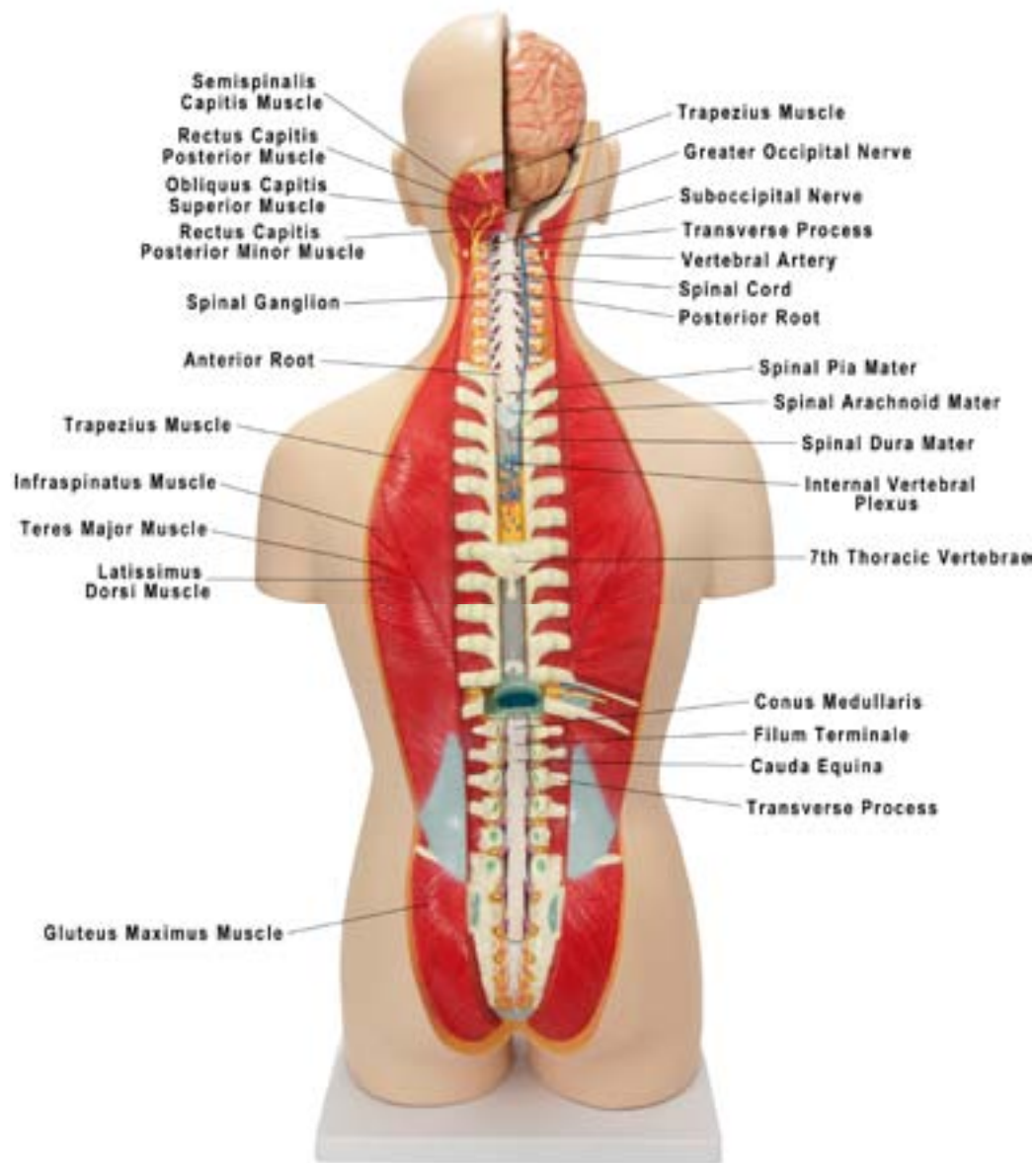
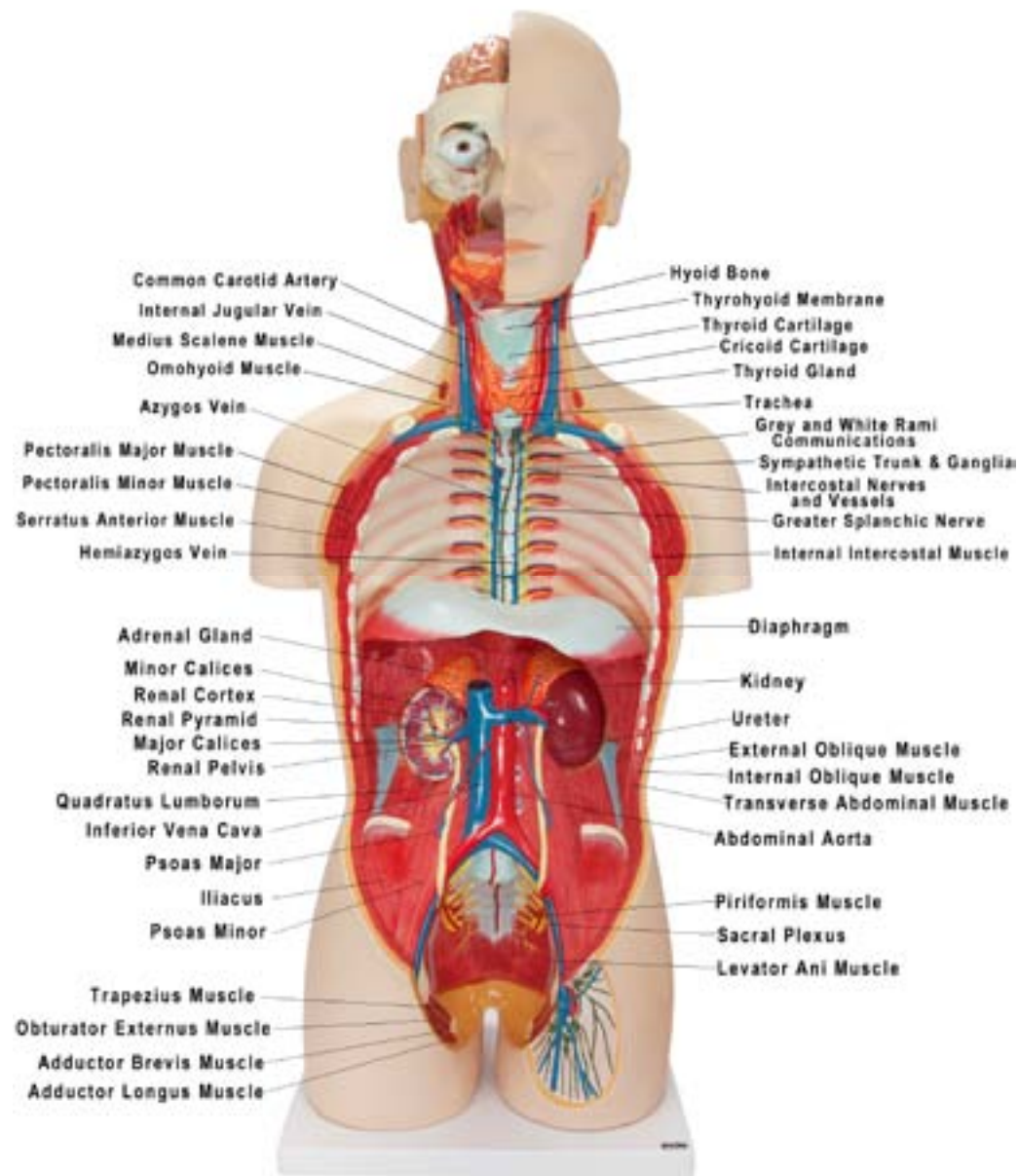
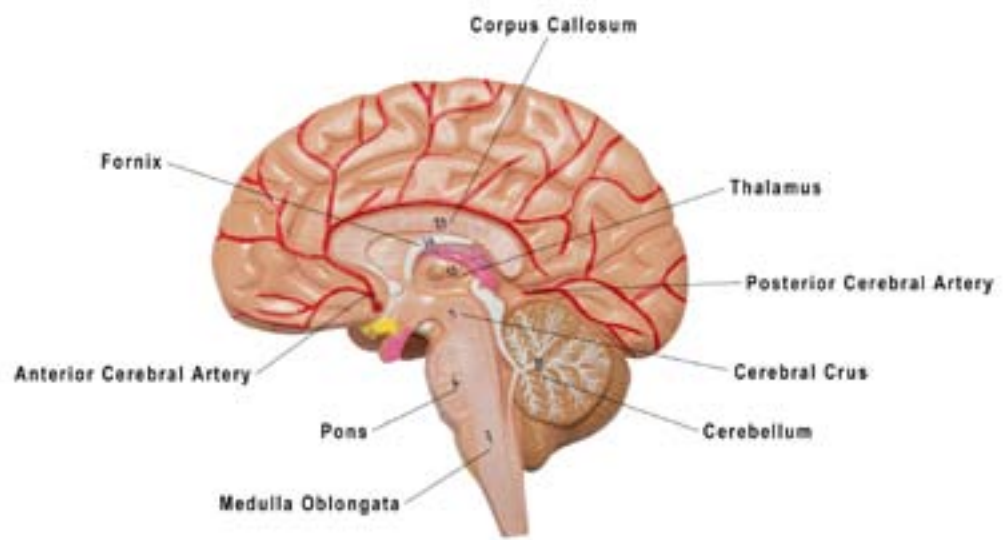
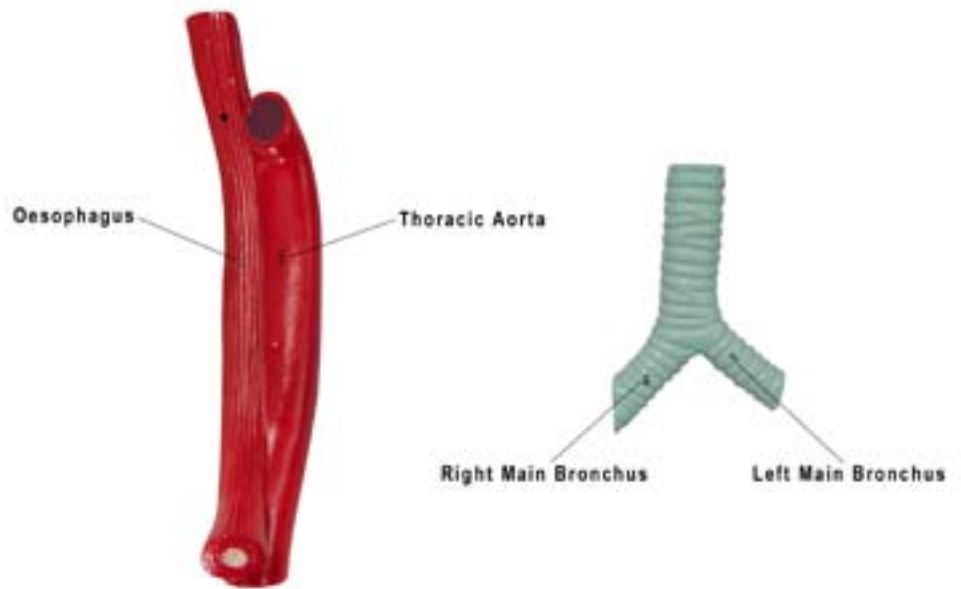
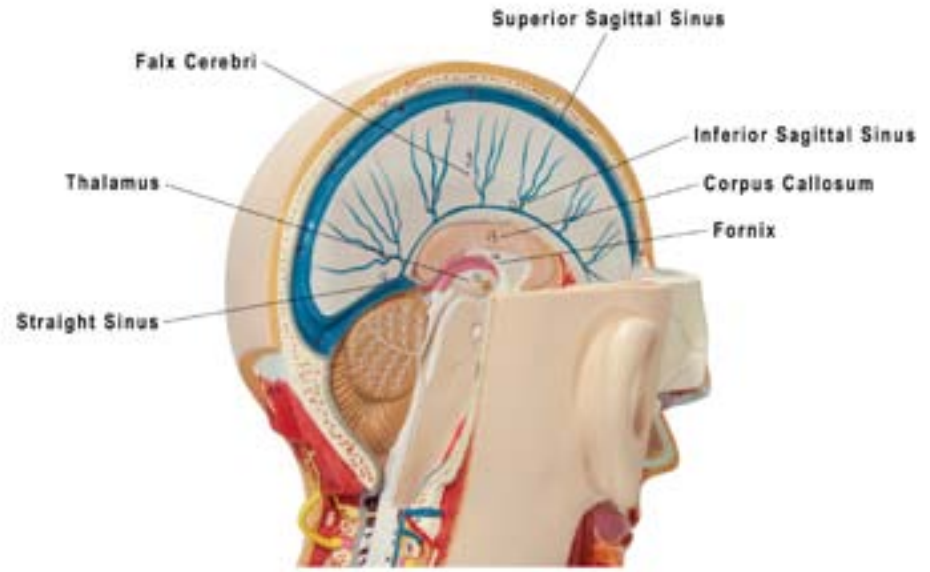
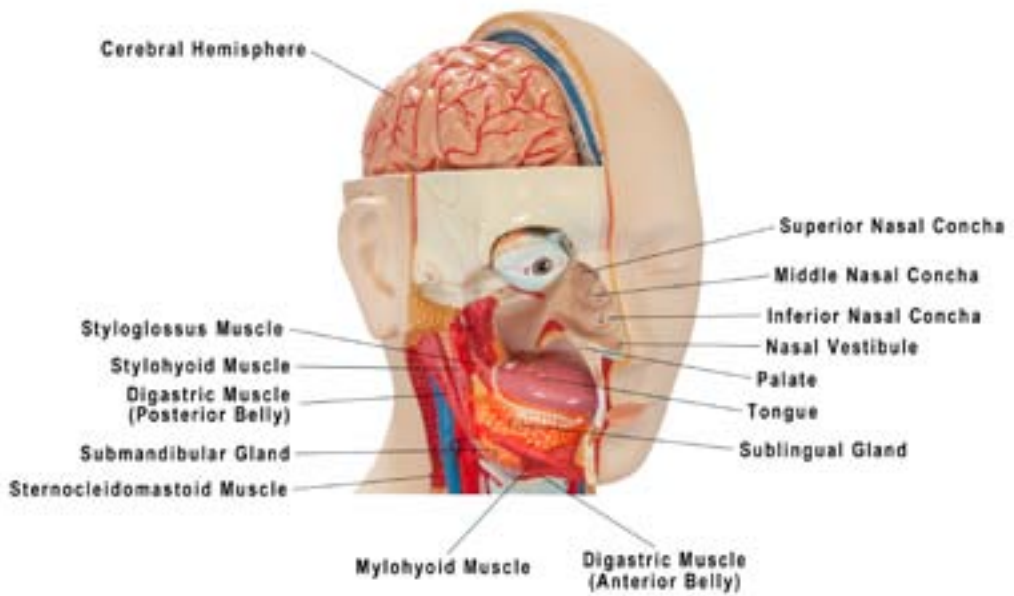


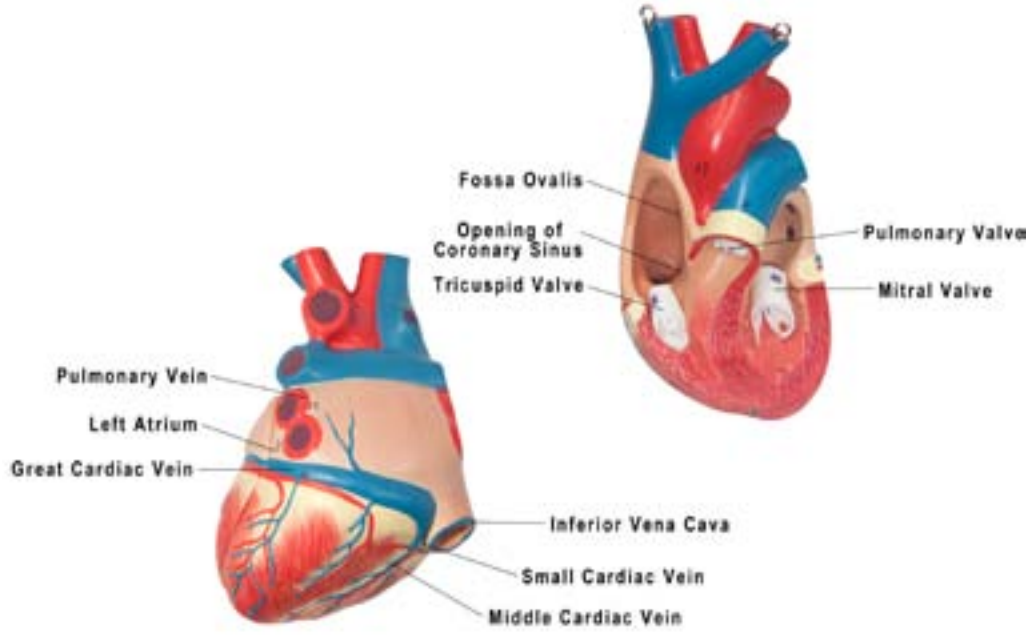
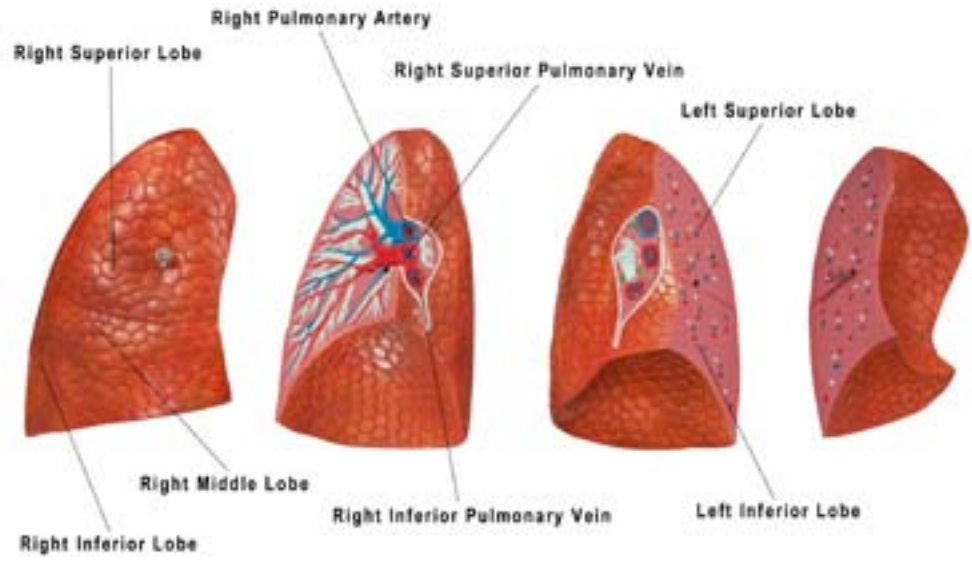
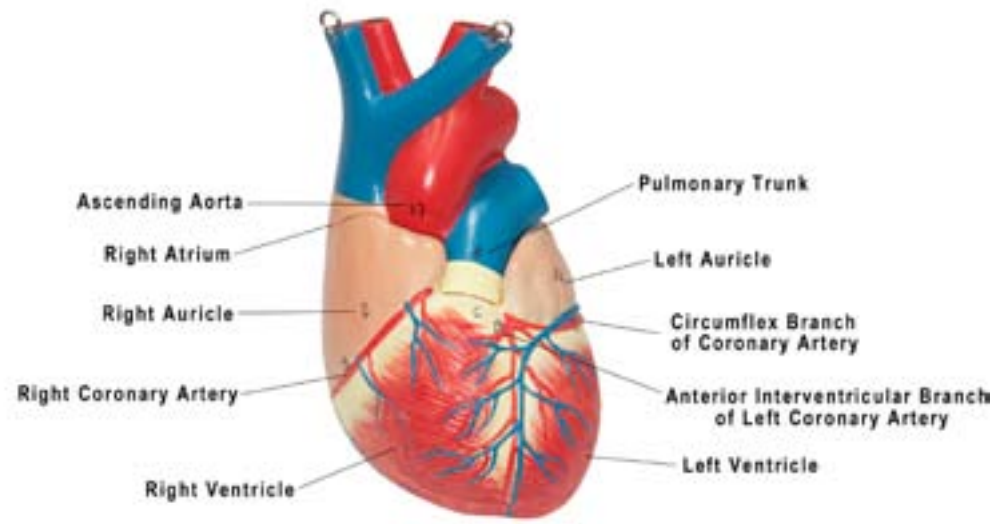
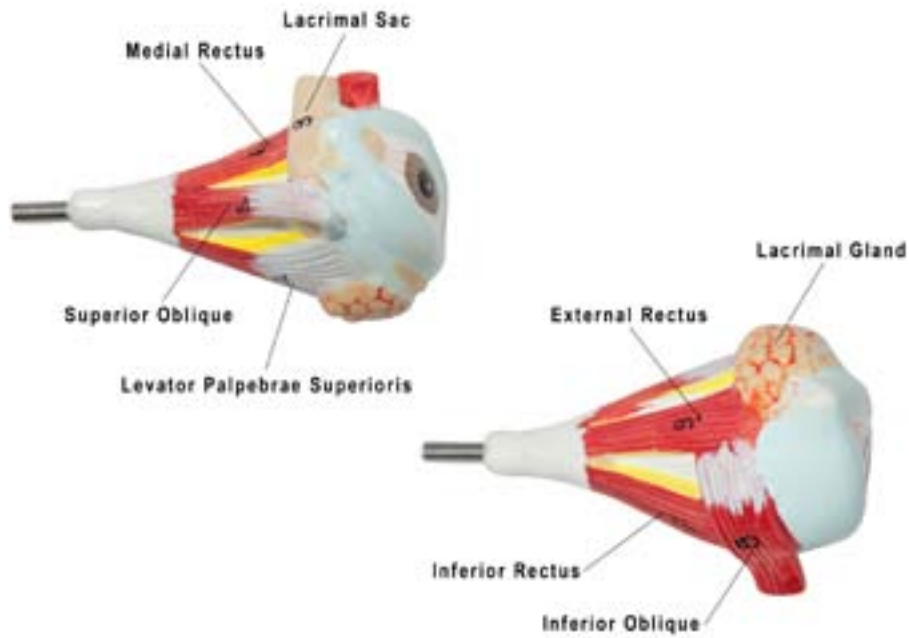


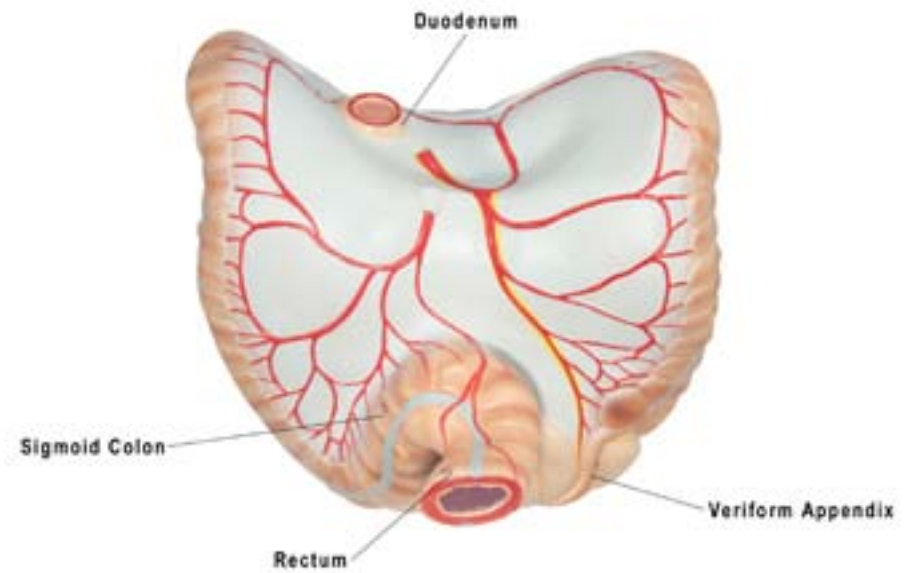
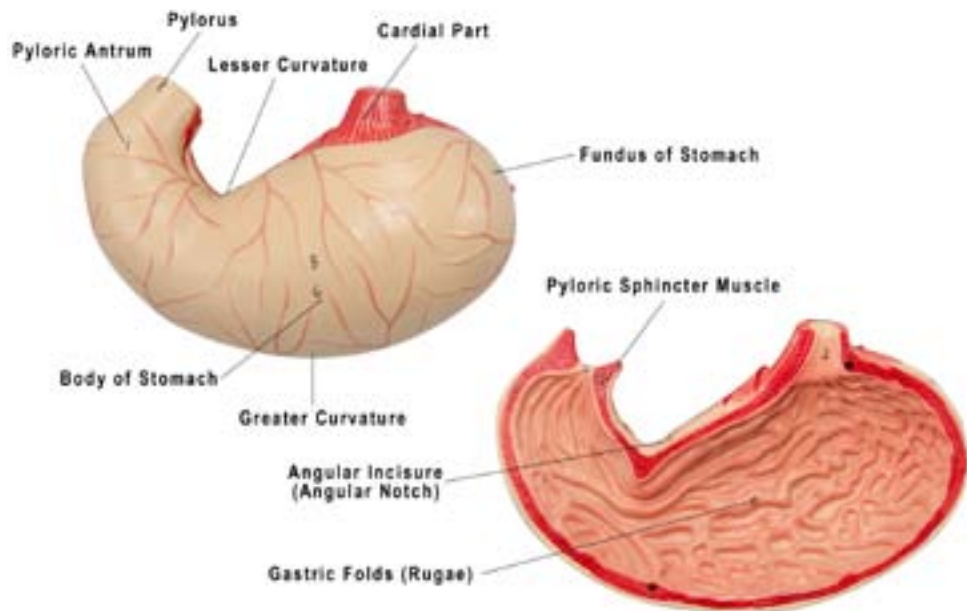
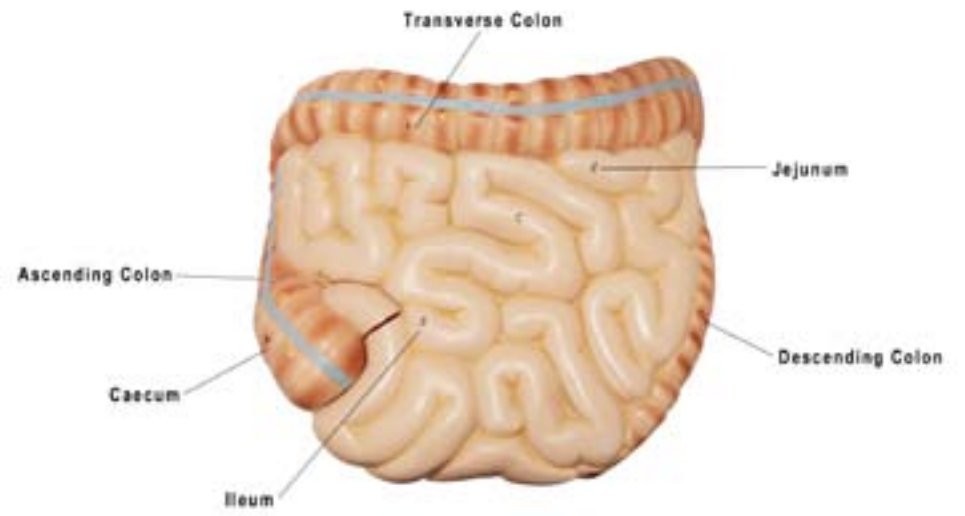
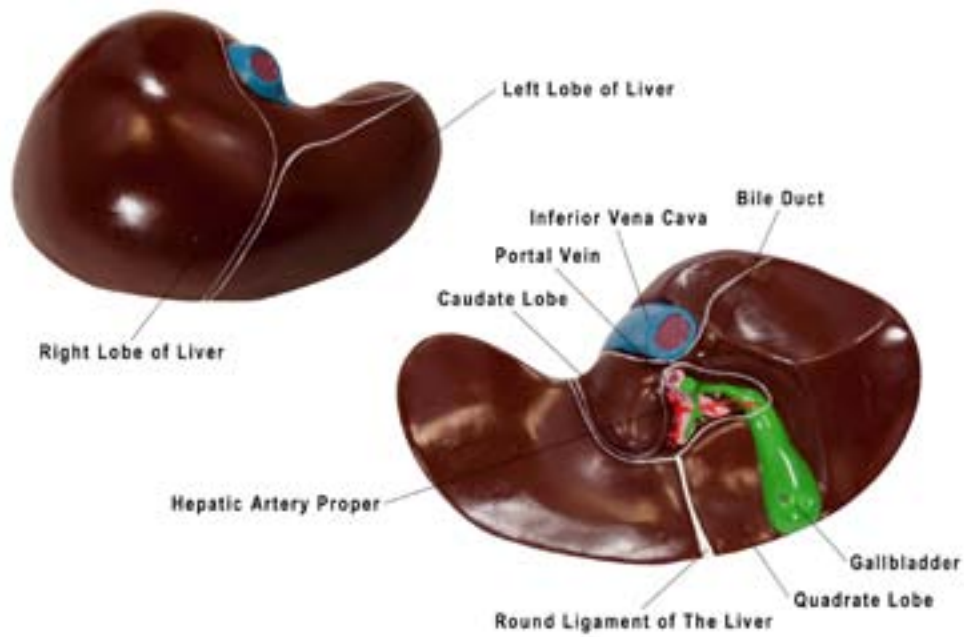
Axis Scientific 27-Part Dual-Sex Life-Size Torso With Open Back

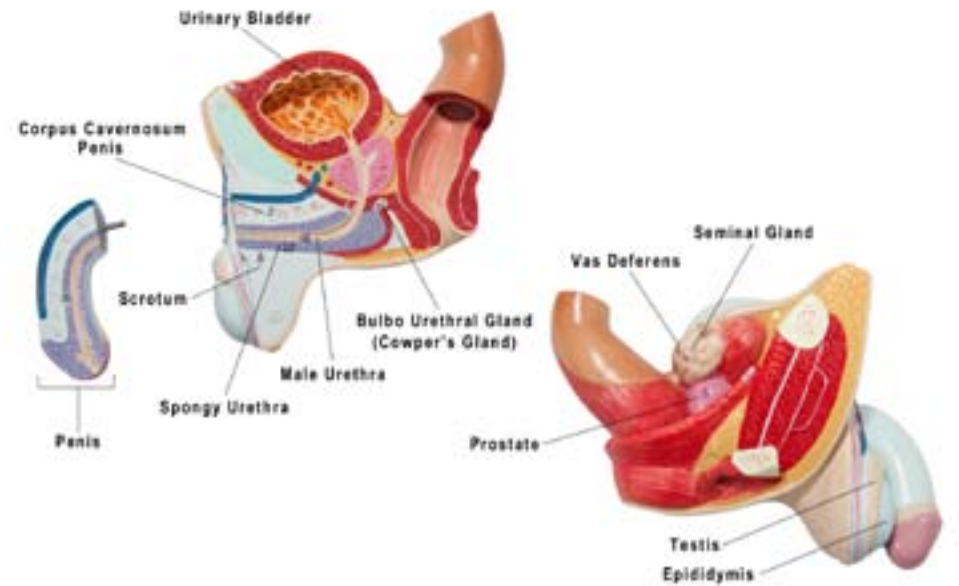
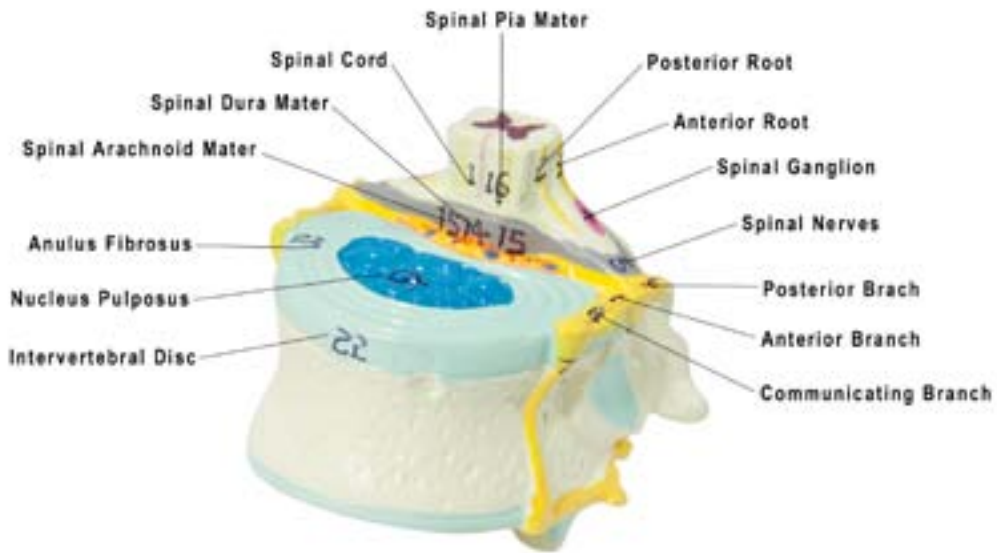
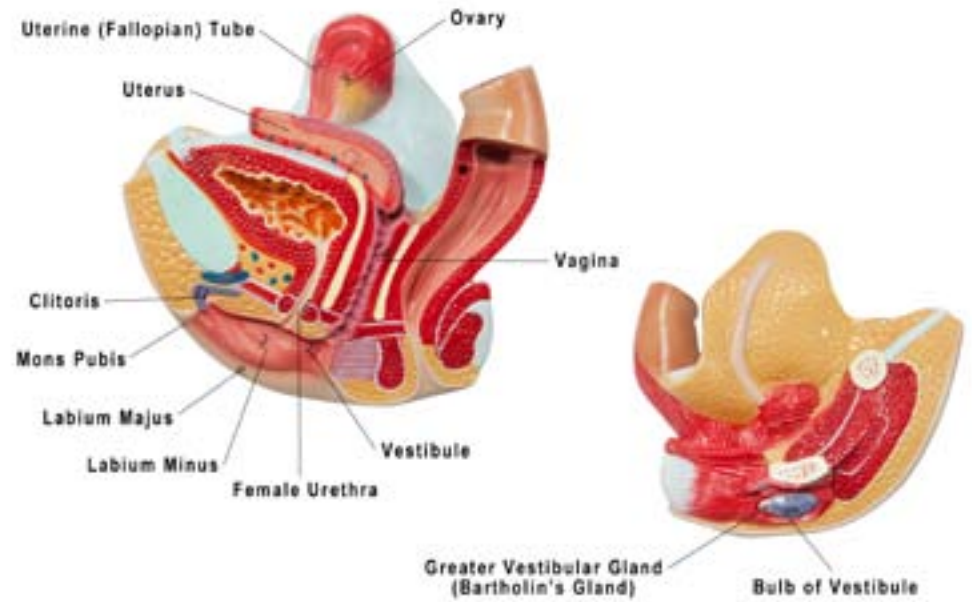
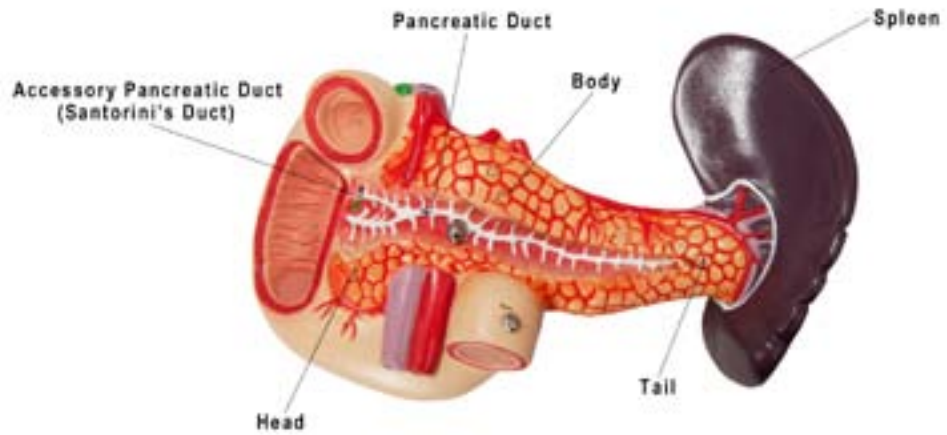
A-104286











Head

A. Cranial Cavity

1. Cerebral Hemisphere
2. Anterior Cerebral Artery
3. Posterior Cerebral Artery
4. Internal Carotid Artery
5. Cerebral Crus
6. Pons (Bridge of Varolius)
7. Medulla Oblongata (Bulb)
8. Cerebellum
9. Falx Cerebri (Cerebral Falx)
10. Superior Sagittal Sinus
11. Inferior Sagittal Sinus
12. Straight Sinus
13. Corpus Callosum
14. Fornix
15. Thalamus

B. Orbit

1. Eyeball
2. Lacrimal Gland
3. Lacrimal Sac
4. Levator Palpebrae Superioris Muscle
5. Superior Oblique Muscle
6. Medial Rectus Muscle
7. Inferior Rectus Muscle
8. Inferior Oblique Muscle
9. External Rectus Muscle

C. Nasal Cavity

1. Superior Nasal Concha
2. Middle Nasal Concha
3. Inferior Nasal Concha
4. Nasal Vestibule

D. Oral Cavity

1. Palate
2. Tongue
3. Pharynx
4. Parotid Gland
5. Sublingual Gland
6. Submandibular Gland

Anterior Cervical Region (Anterior Triangle)

1. Hyoid Bone
2. Thyrohyoid Membrane
3. Thyroid Cartilage
4. Cricoid Cartilage
5. Thyroid Gland
6. Trachea (Windpipe)
7. Common Carotid Artery
8. Internal Jugular Vein

Thoracic Cavity

A. Left Lung

1. Left Lung; Superior Lobe
2. Left Lung; Inferior Lobe

B. Right Lung

1. Right Lung; Superior Lobe
2. Right Lung; Middle Lobe
3. Right Lung; Inferior Lobe
4. Right Pulmonary Artery
5. Right Superior Pulmonary Vein
6. Right Inferior Pulmonary Vein

C. Intestine

1. Duodenum
2. Jejunum
3. Ileum
4. Caecum
5. Appendix (Vermiform Appendix)
6. Ascending Colon
7. Transverse Colon
8. Descending Colon
9. Sigmoid Colon
10. Rectum

D. Pancreas

1. Head Of Pancreas
2. Body Of Pancreas
3. Tail Of Pancreas
4. Pancreatic Duct
5. Accessory Pancreatic Duct (Santorini's Duct)

E. Spleen

F. Lumbar Region

1. Left Kidney
2. Right Kidney
3. Suprarenal Gland; (Adrenal Gland)
4. Renal Cortex
5. Renal Pyramids
6. Minor Calices
7. Major Calices
8. Renal Pelvis
9. Ureter
10. Inferior Vena Cava
11. Abdominal Aorta
12. Sacral Plexus

Pelvic Cavity

(Female Genital System)

1. Uterus
2. Vagina
3. Uterine Tube (Fallopian Tube)
4. Ovary
5. Urinary Bladder
6. Female Urethra
7. Labium Minus
8. Labium Majus
9. Bulb Of Vestibule
10. Greater Vestibular Gland (Bartholin's Gland)
11. Clitoris
12. Vestibule
13. Mons Pubis

Pelvic Cavity

(Male Genital System)

1. Testis
2. Epididymis
3. Ductus Deferens; Vas Deferens (Spermatic Duct)
4. Seminal Gland (Seminal Vesicle)
5. Prostate
6. Bulbo-Urethral Gland (Cowper's Gland)
7. Penis
8. Scrotum
9. Corpus Cavernosum Penis
10. Spongy Urethra (Cavernous Body of Urethra)
11. Urinary Bladder
12. Male Urethra

C. Heart

1. Right Atrium
2. Right Auricle
3. Superior Vena Cava
4. Inferior Vena Cava
5. Fossa Ovalis (Oval Fossa)
6. Opening of Coronary Sinus
7. Right Ventricle
8. Pulmonary Truncus
9. Pulmonary Valve
10. Tricuspid Valve
11. Left Atrium
12. Left Auricle
13. Pulmonary Vein
14. Left Ventricle
15. Mitral Valve (Bicuspid Valve)
16. Aortic Valve
17. Ascending Aorta
18. Right Coronary Artery
19. Anterior Interventricular Branch of Left Coronary Artery
20. Circumflex Branch of Left Coronary Artery
21. Great Cardiac Vein
22. Middle Cardiac Vein (Posterior Interventricular Vein)
23. Small Cardiac Vein
24. Coronary Sinus

D. Oesophagus

E. Thoracic Aorta

F. Left main Bronchus

G. Right Main Bronchus

H. Thoracic Duct

I. Azygos Vein

J. Hemiazygos Vein

K. Sympathetic Trunk and Ganglia

L. Grey and White Rami Communicantes

M. Greater Splanchnic Nerve

N. Intercostal Nerves and Vessels

Abdominal cavity

A. Liver

1. Left Lobe of Liver
2. Right Lobe of Liver
3. Inferior Vena Cava
4. Gallbladder
5. Bile Duct
6. Hepatic Artery Proper
7. Hepatic Portal Vein
8. Quadrate Lobe
9. Caudate Lobe
10. Round Ligament of the Liver

B. Stomach

1. Cardia; Cardial Part
2. Pylorus
3. Lesser Curvature
4. Greater Curvature
5. Fundus of Stomach
6. Body of Stomach
7. Pyloric Antrum
8. Gastric Folds (Gastric Rugae)
9. Angular Incisure (Angular Notch)
10. Pyloric Sphincter Muscle

Muscles

- M1. Styloglossus Muscle
- M2. Stylohyoid Muscle
- M3. Digastric Muscle, Posterior Belly
- M4. Digastric Muscle, Anterior Belly
- M5. Mylohyoid Muscle
- M6. Sternocleidomastoid Muscle
- M7. Medius Scalene Muscle (Middle Scalene Muscle)
- M8. Omohyoid Muscle
- M9. Pectoralis Major Muscle
- M10. Pectoralis Minor Muscle
- M11. Serratus Anterior Muscle
- M12. Internal Intercostal Muscles
- M13. Diaphragm
- M14. External Oblique Muscle
- M15. Internal Oblique Muscle
- M16. Transversus Abdominis Muscle/Transverse Abdominal Muscle
- M17. Quadratus Lumborum Muscle
- M18. Psoas Major Muscle
- M19. Psoas Minor Muscle
- M20. Iliacus Muscle
- M21. Obturator Internus Muscle
- M22. Levator Ani Muscle
- M23. Piriformis Muscle
- M24. Obturator Externus Muscle
- M25. Adductor Longus Muscle
- M26. Adductor Brevis Muscle
- M27. Trapezius Muscle
- M28. Semispinalis Capitis Muscle
- M29. Obliquus Capitis Superior Muscle
- M30. Rectus Capitis Posterior Major
- M31. Rectus Capitis Posterior Minor Muscle
- M32. Infrapinnatus Muscle
- M33. Teres Major Muscle
- M34. Latissimus Dorsi Muscle
- M35. Gluteus Maximus Muscle

Back

1. Spinal Cord
2. Posterior Root (Sensory/Dorsal Root)
3. Anterior Root (Motor/Ventral Root)
4. Spinal Ganglion (Dorsal Root Ganglion)
5. Spinal Nerves
6. Posterior Branch (Posterior Ramus)
7. Anterior Branch (Anterior Ramus)
8. Communicating Branch (Ramus Comunicans)
9. Suboccipital Nerve
10. Greater Occipital Nerve
11. Conus Medullaris (Medullary Cone)
12. Filum Terminale
13. Cauda Equina
14. Spinal Dura Mater
15. Spinal Arachnoid Mater
16. Spinal Pia Mater
17. Transverse Process
18. Vertebral Artery
19. Internal Vertebral Plexus
20. 7th Thoracic Vertebrae
21. 12th Thoracic Vertebrae
22. Intervertebral Disc
23. Anulus Fibrosus
24. Nucleus Pulposus

