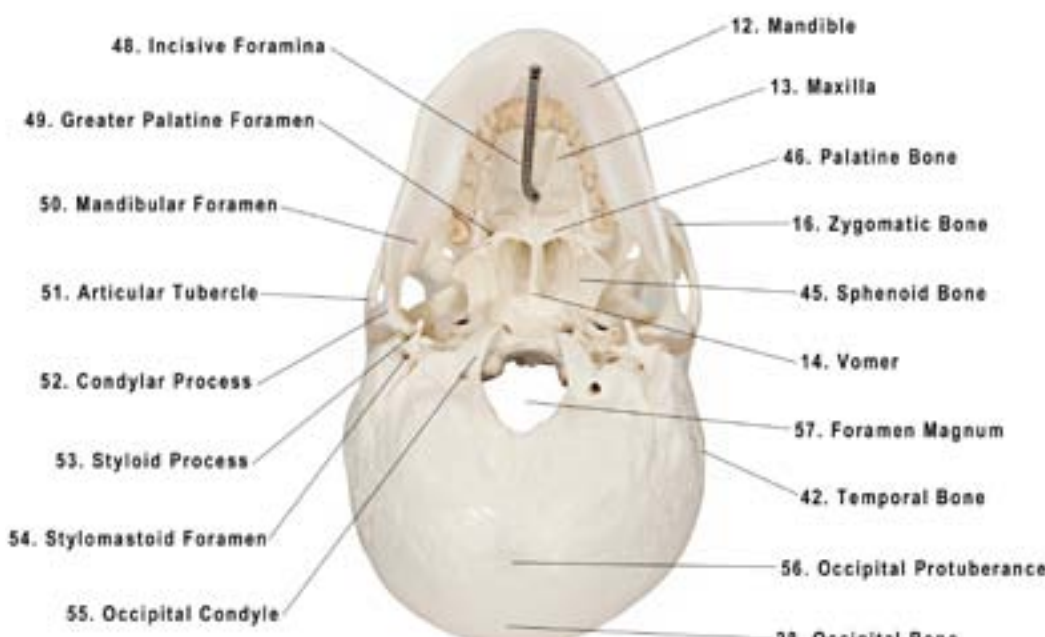
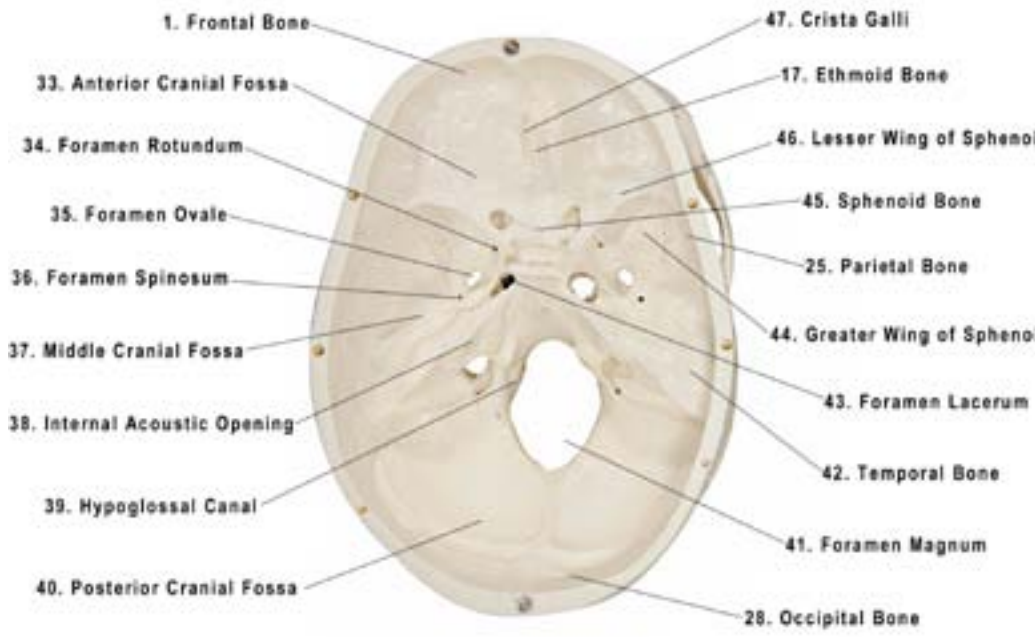
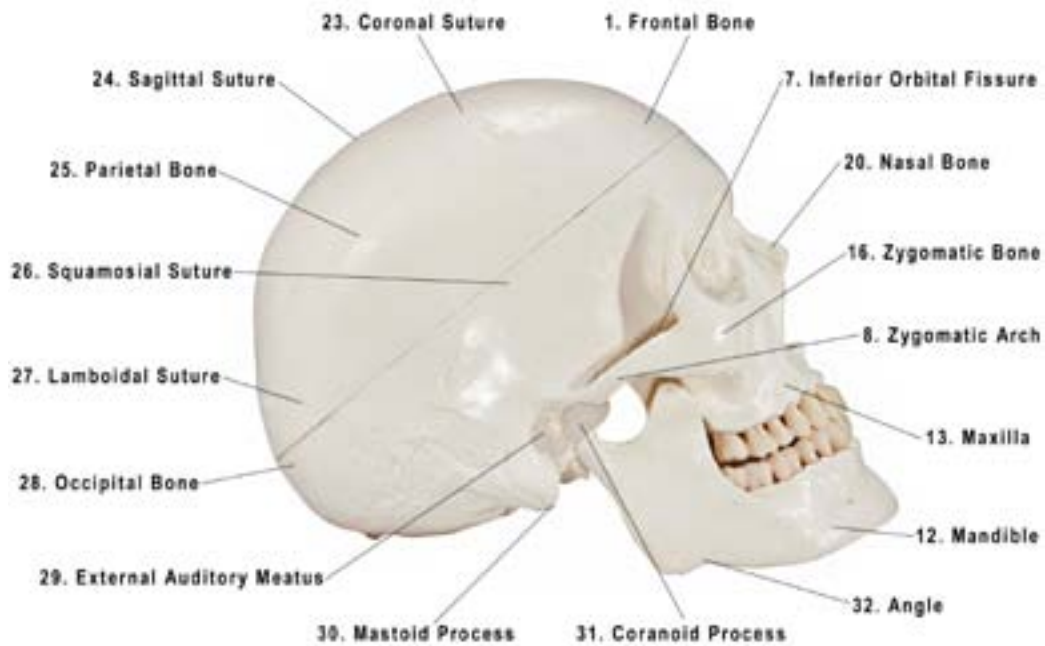




**Axis Scientific 3-Part Life-Size Human Skull**

**A-104405**



1. Frontal Bone
2. Supraorbital Notch
3. Coronal Suture
4. Supraorbital Ridge
5. Pterion
6. Supraorbital Fissure
7. Inferior Orbital Fissure
8. Zygomatic Arch
9. Infraorbital Foramen
10. Inferior Nasal Concha
11. Mental Foramen
12. Mandible
13. Maxilla
14. Vomer Bone
15. Perpendicular Plate
16. Zygomatic Bone
17. Ethmoid Bone
18. Lacrimal Bone
19. Orbital Plates
20. Nasal Bone
21. Optic Canal
22. Frontal Squama
23. Coronal Suture
24. Sagittal Suture
25. Parietal Bone
26. Squamosial Suture
27. Lamboidal Suture
28. Occipital Bone
29. External Auditory Meatus
30. Mastoid Process
31. Coronoid Process
32. Angle
33. Anterior Cranial Fossa
34. Foramen Rotundum
35. Foramen Ovale
36. Foramen Spinosum
37. Middle Cranial Fossa
38. Internal Acoustic Opening
39. Hypoglossal Canal
40. Posterior Cranial Fossa
41. Foramen Magnum
42. Temporal Bone
43. Foramen Lacerum
44. Greater Wing of Sphenoid
45. Sphenoid Bone
46. Lesser Wing of Sphenoid
47. Crista Galli
48. Incisive Foramina
49. Greater Palatine Foramen
50. Mandibular Foramen
51. Articular Tubercle
52. Condylar Process
53. Styloid Process
54. Stylomastoid Foramen
55. Occipital Condyle
56. Occipital Protuberance
57. Foramen Magnum

