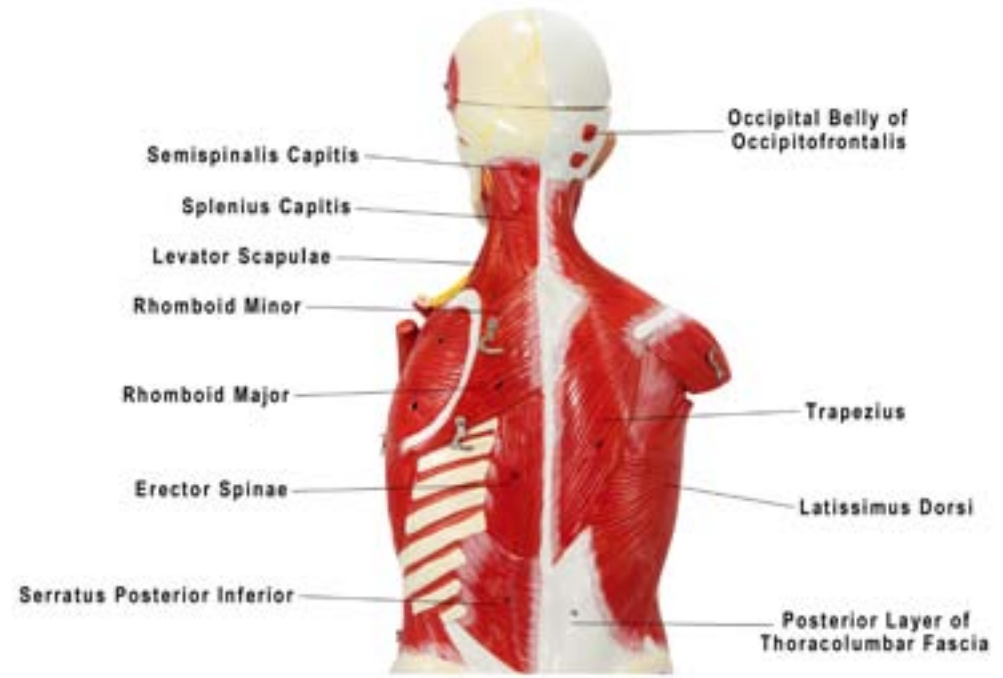
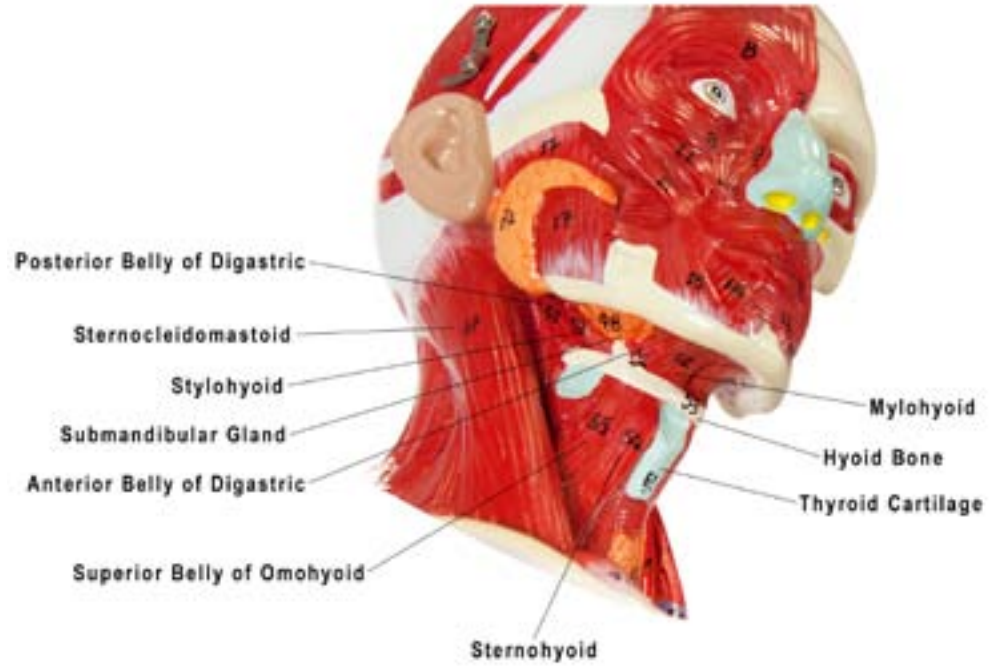
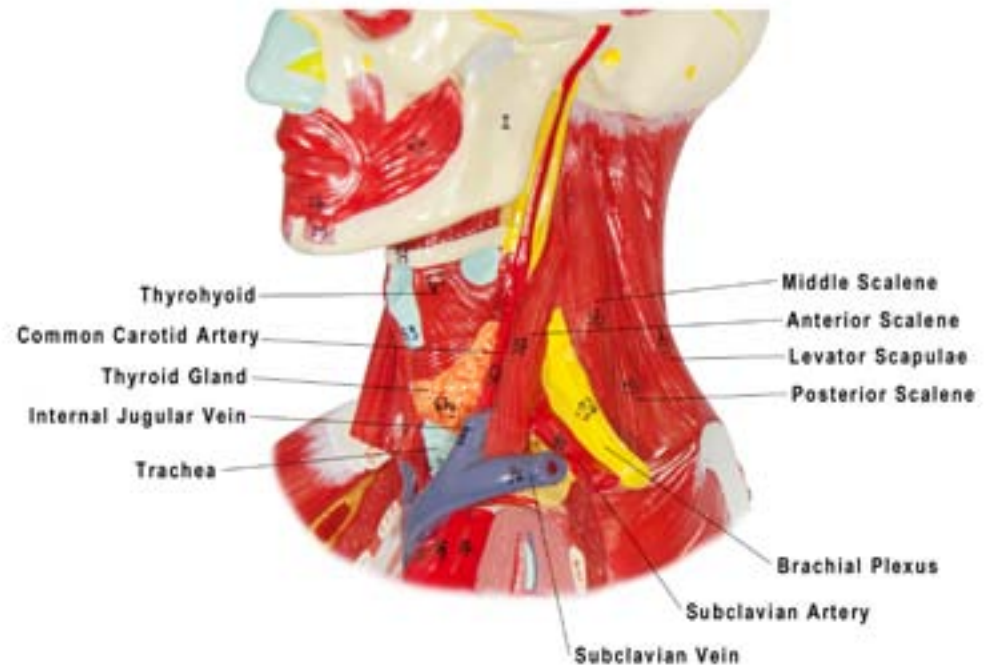
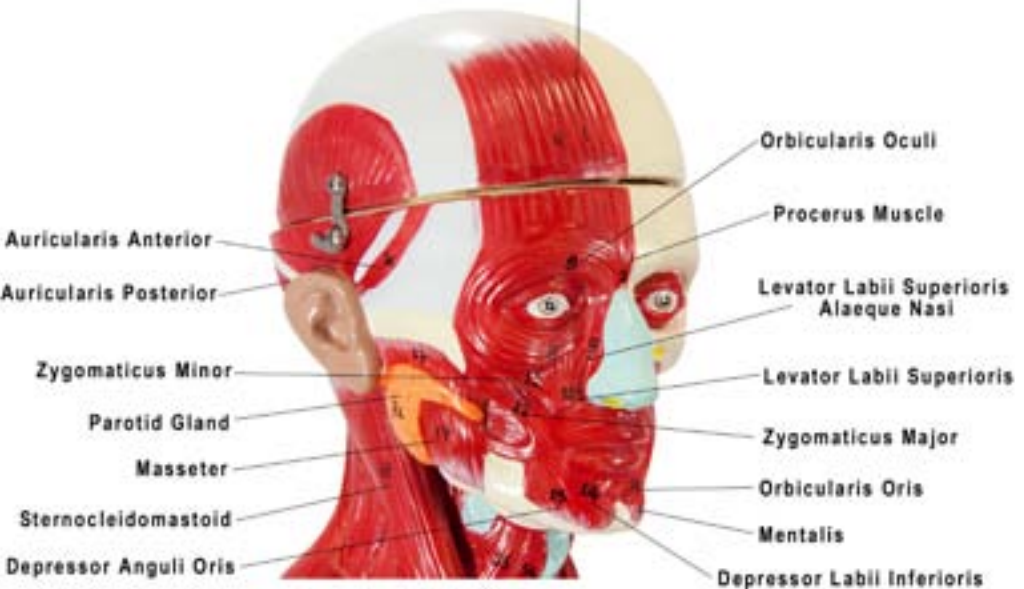


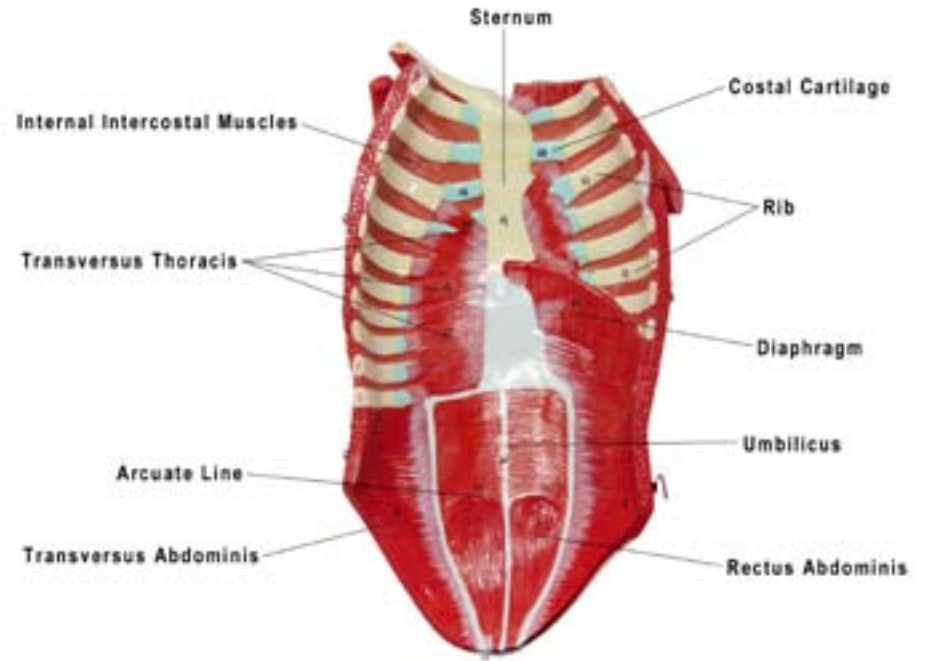
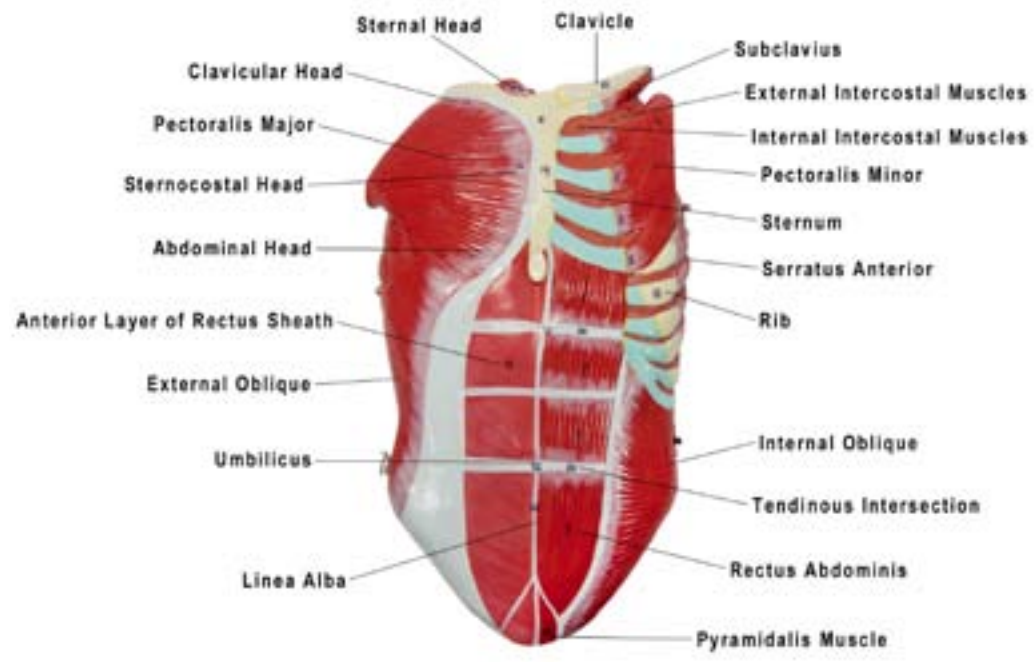
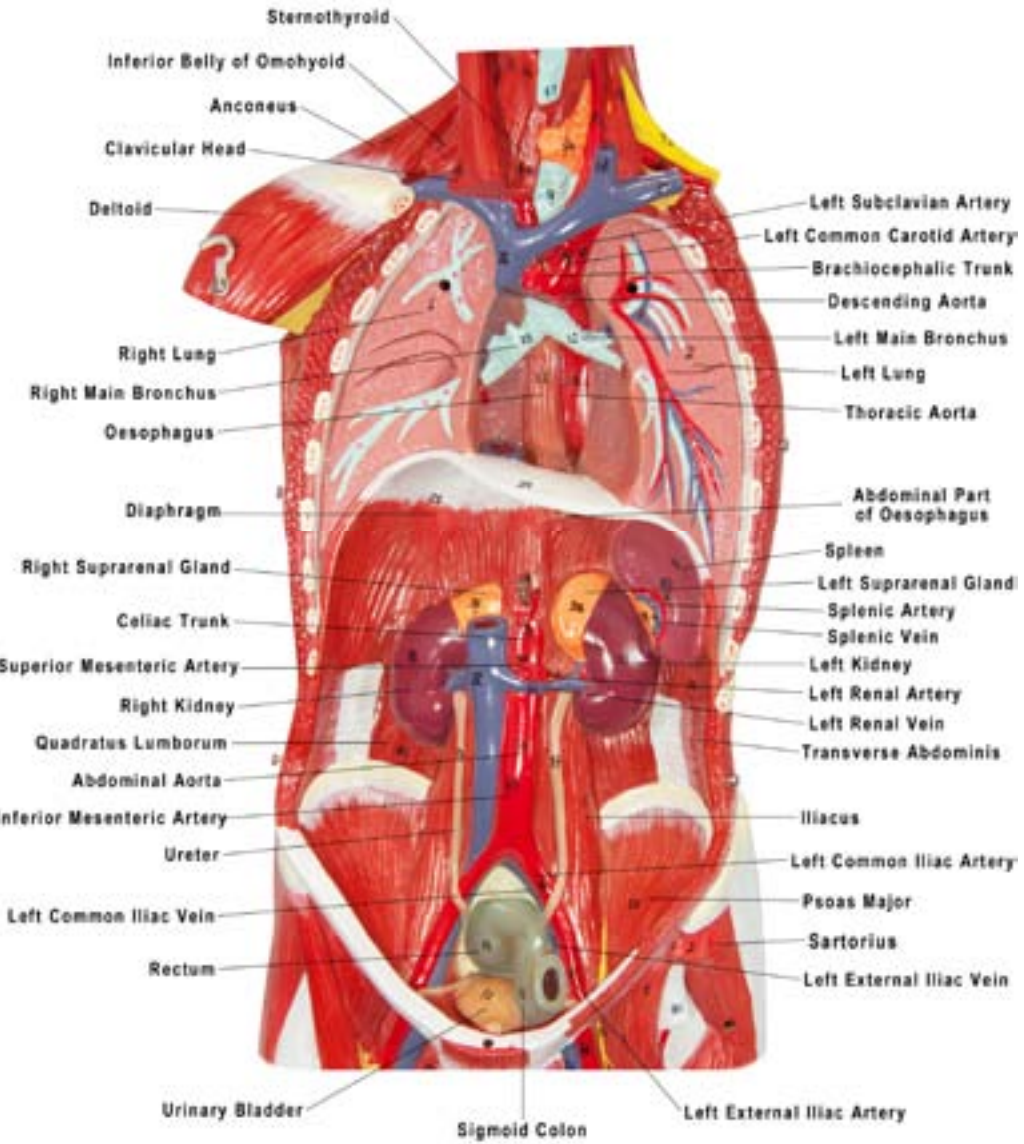


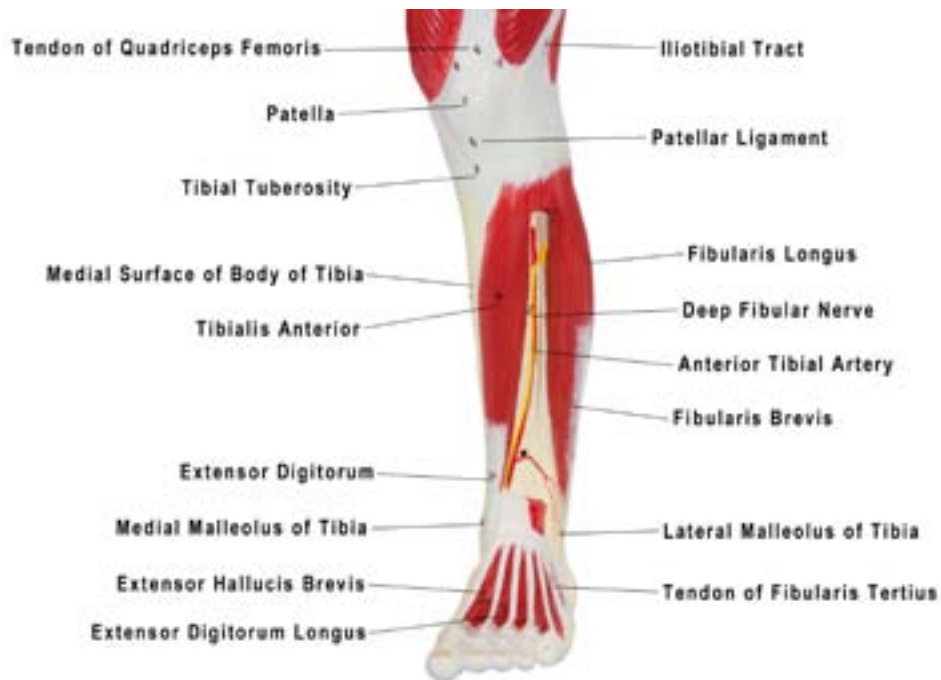
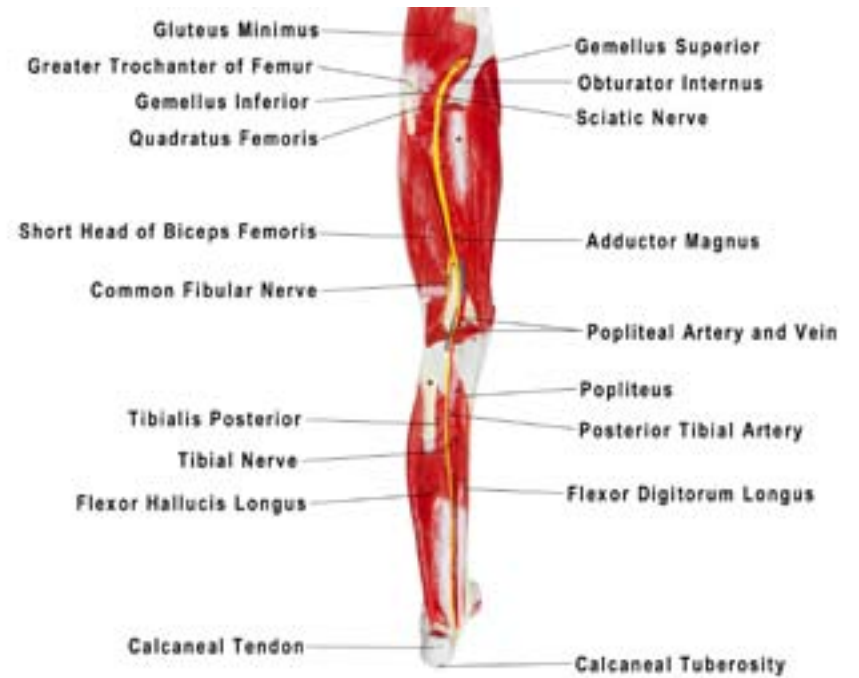
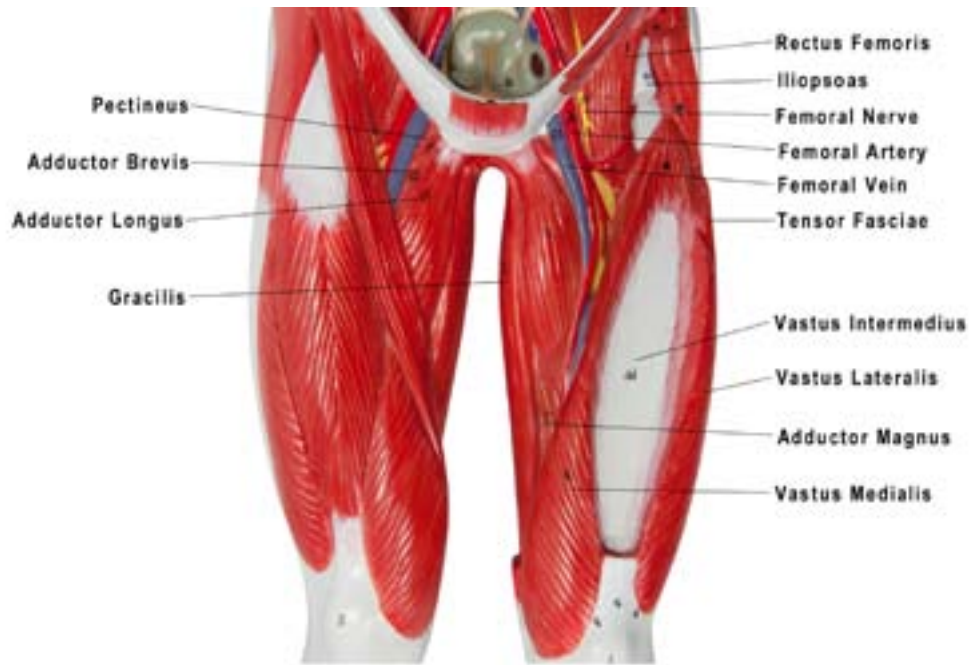
**Axis Scientific 27-Part Half Life-Size Muscular Figure**

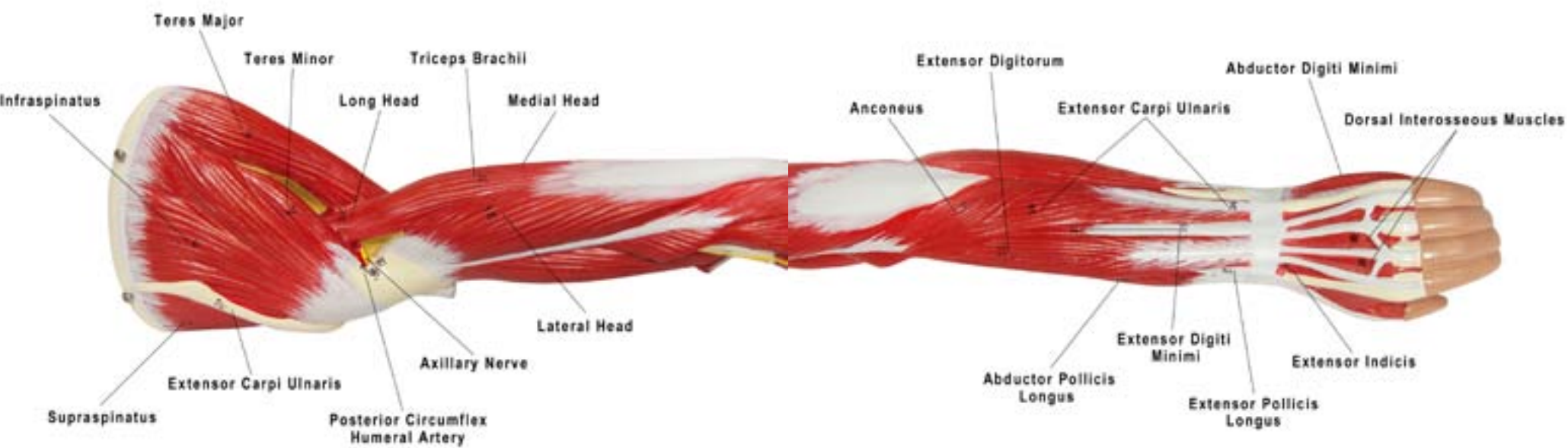
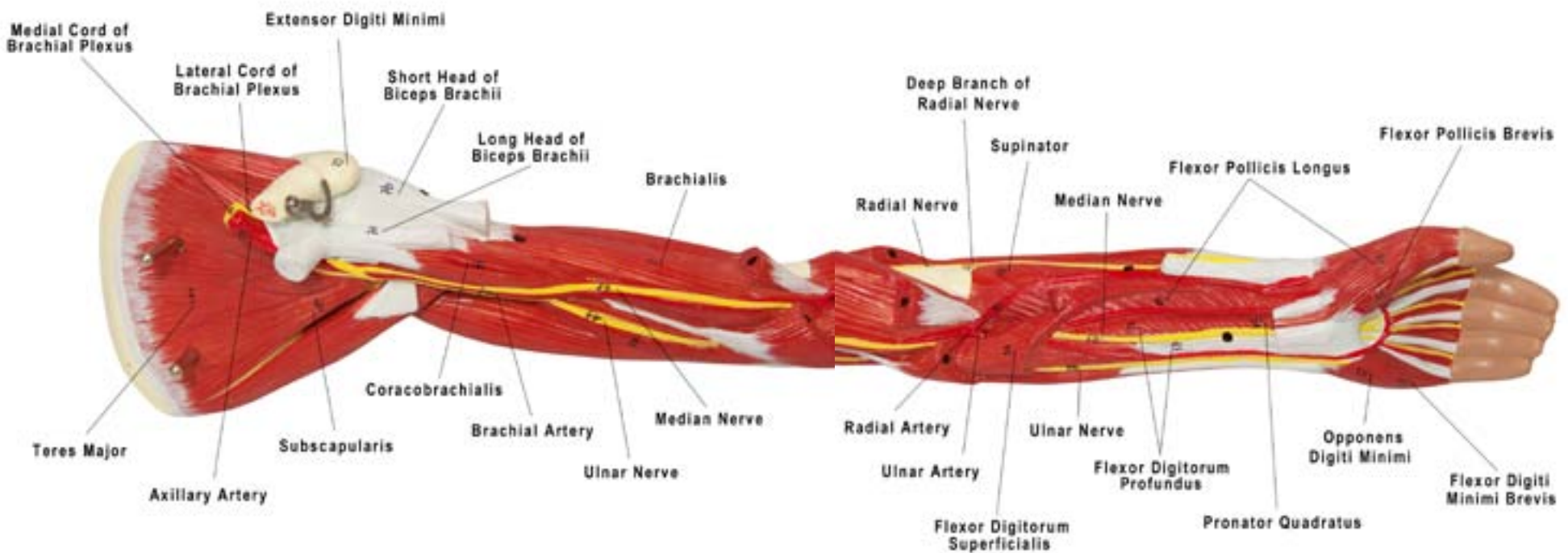
**A-105165**

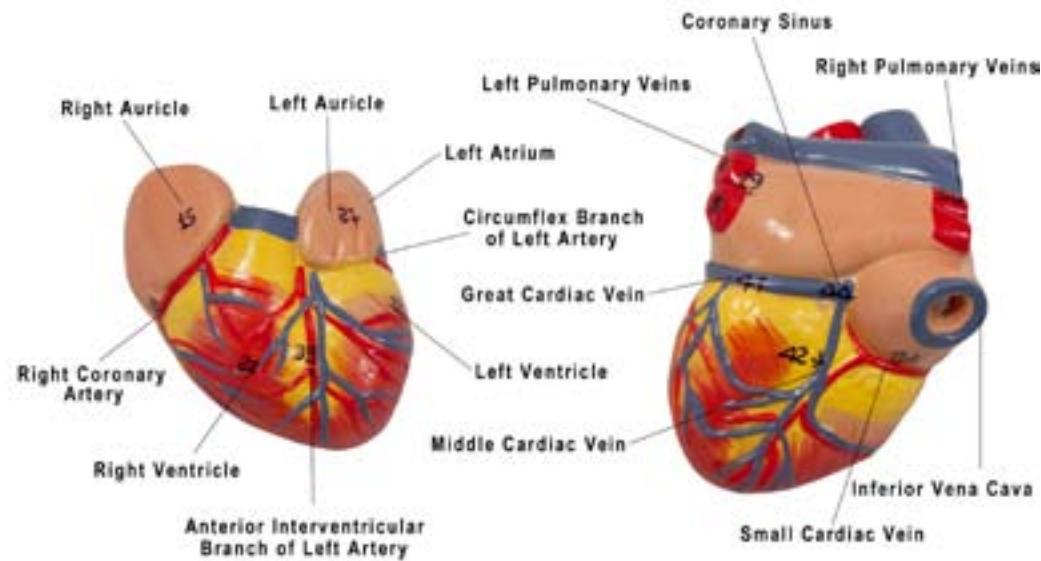
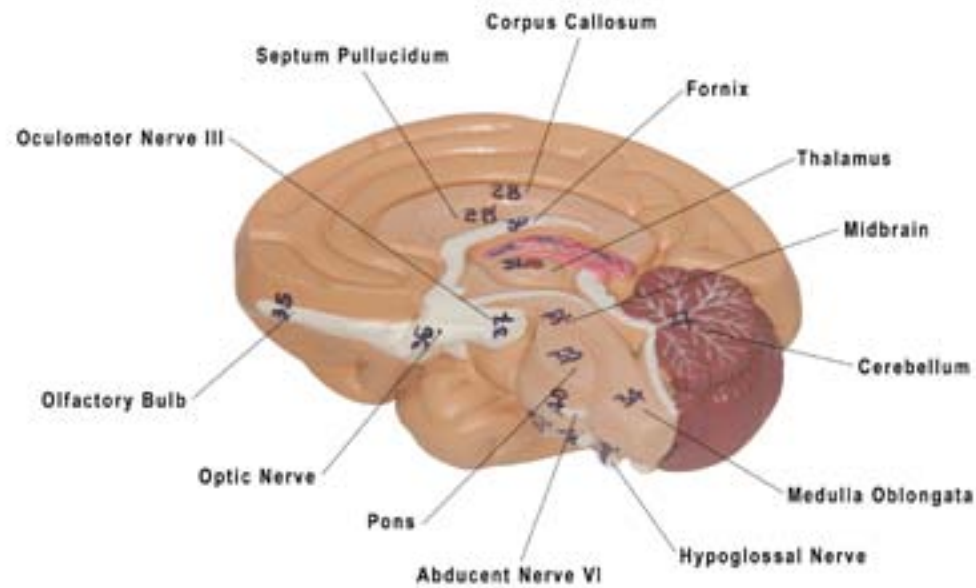
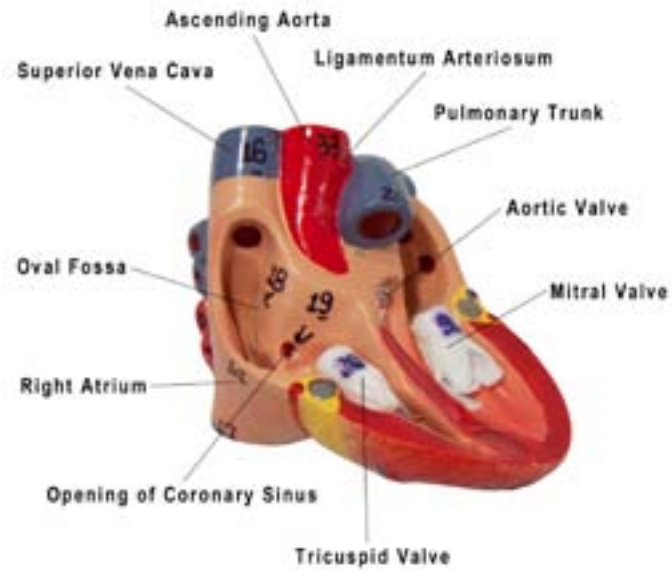
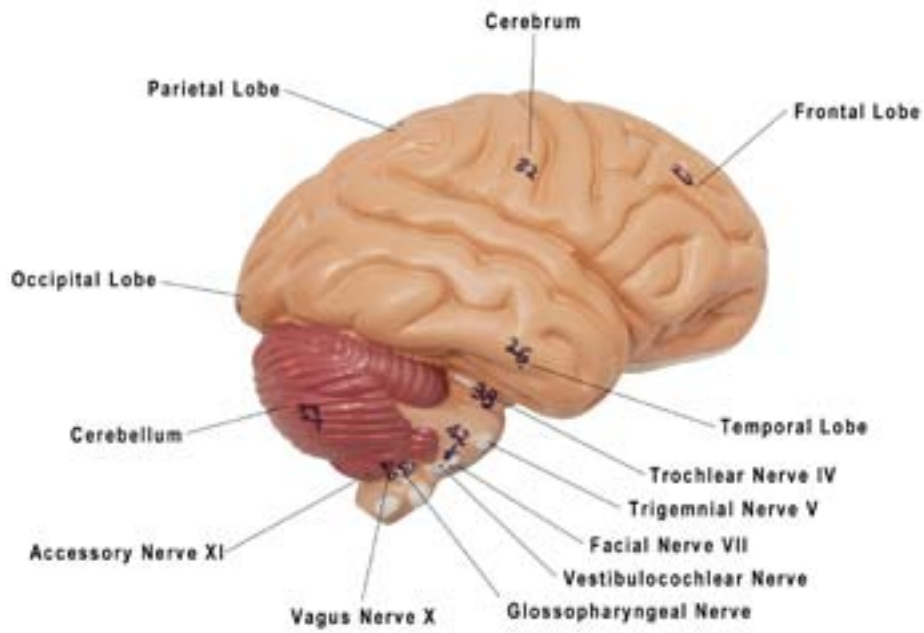
Frontal Belly of Occipitofrontalis

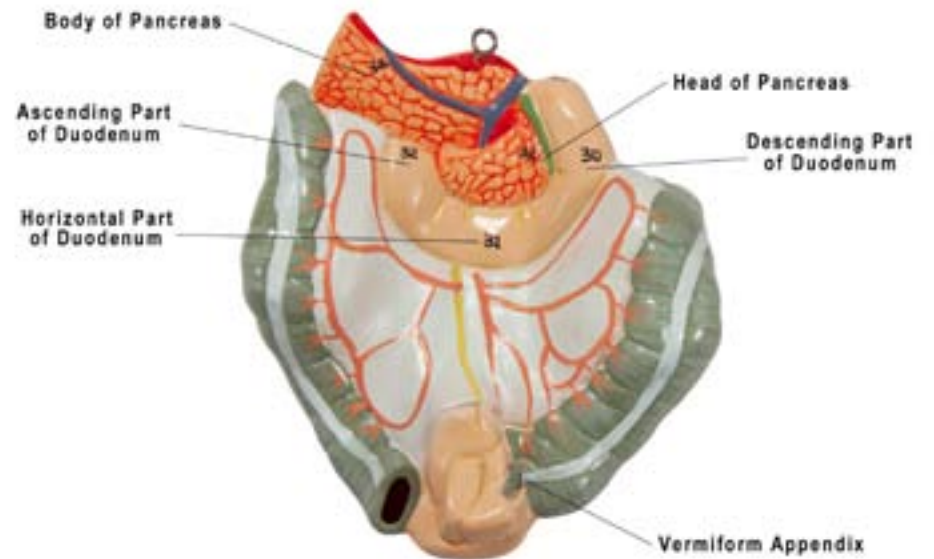
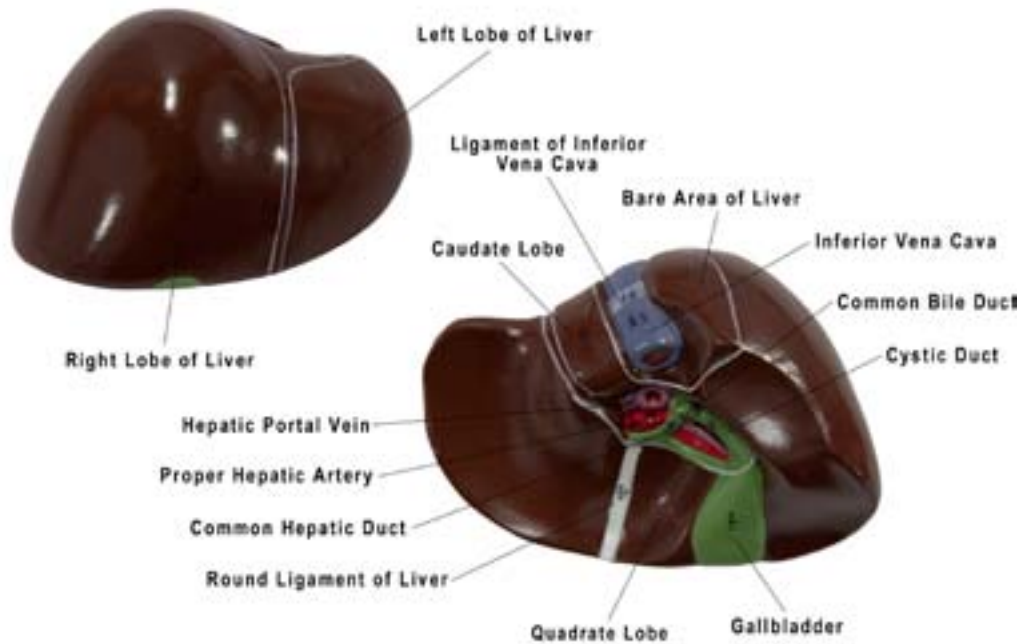
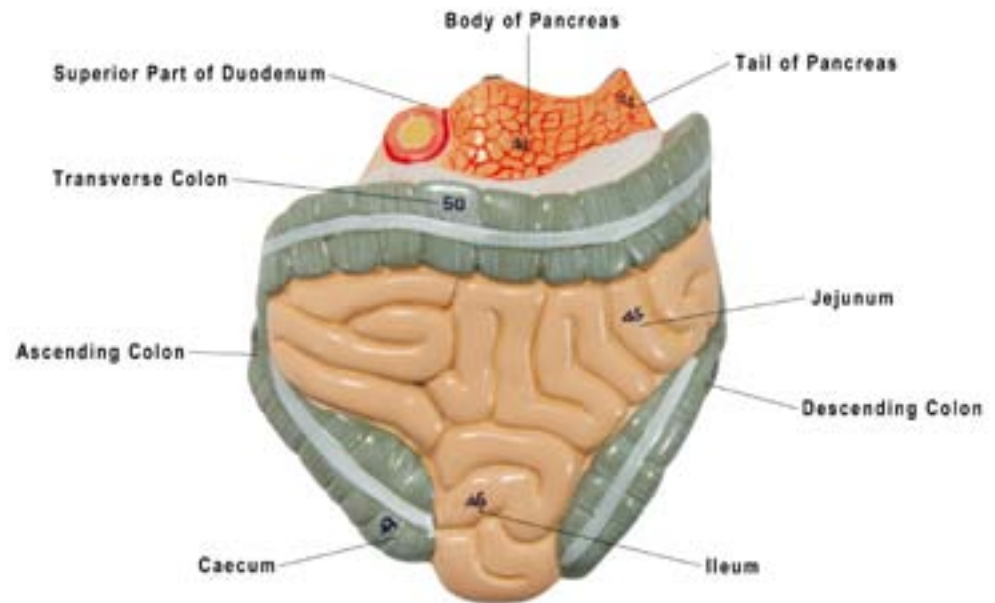
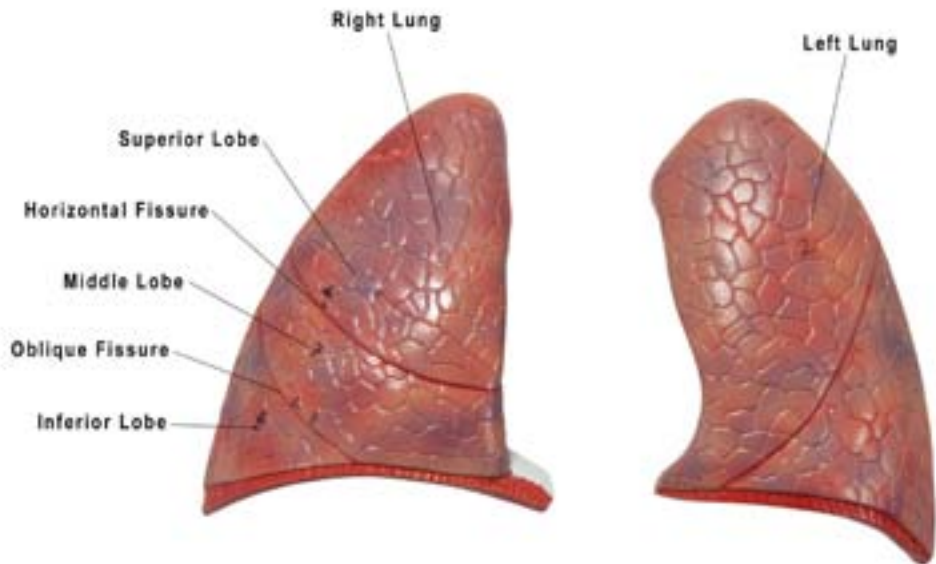


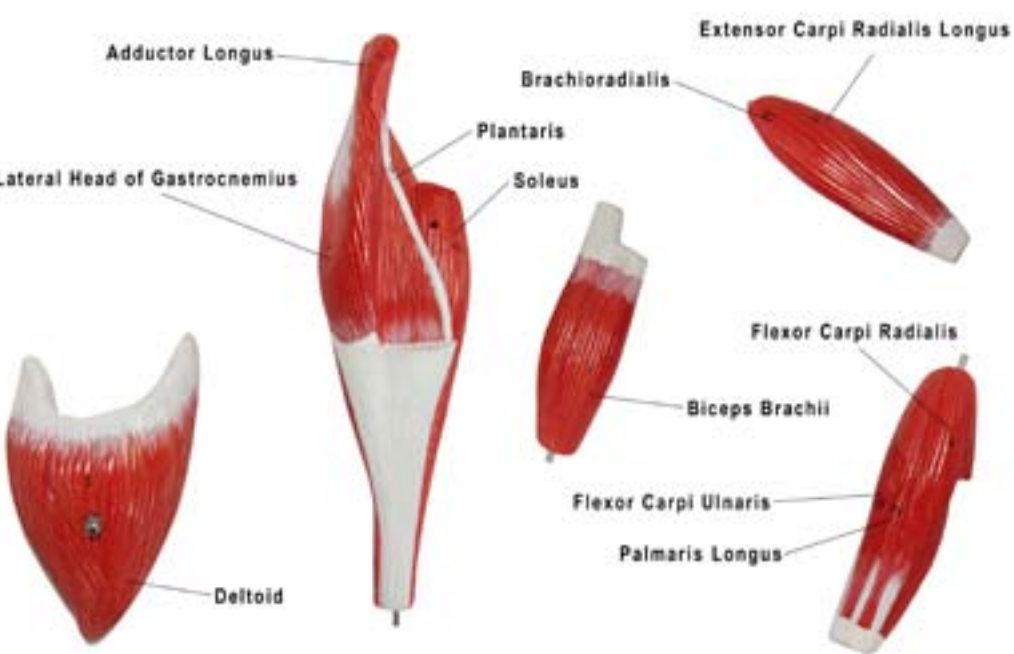
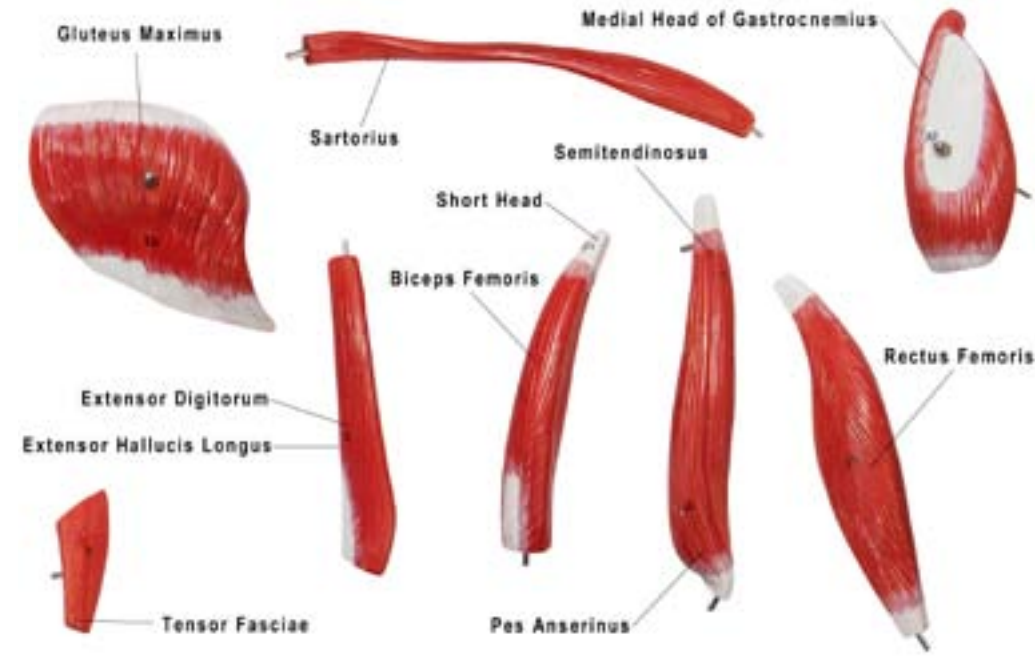
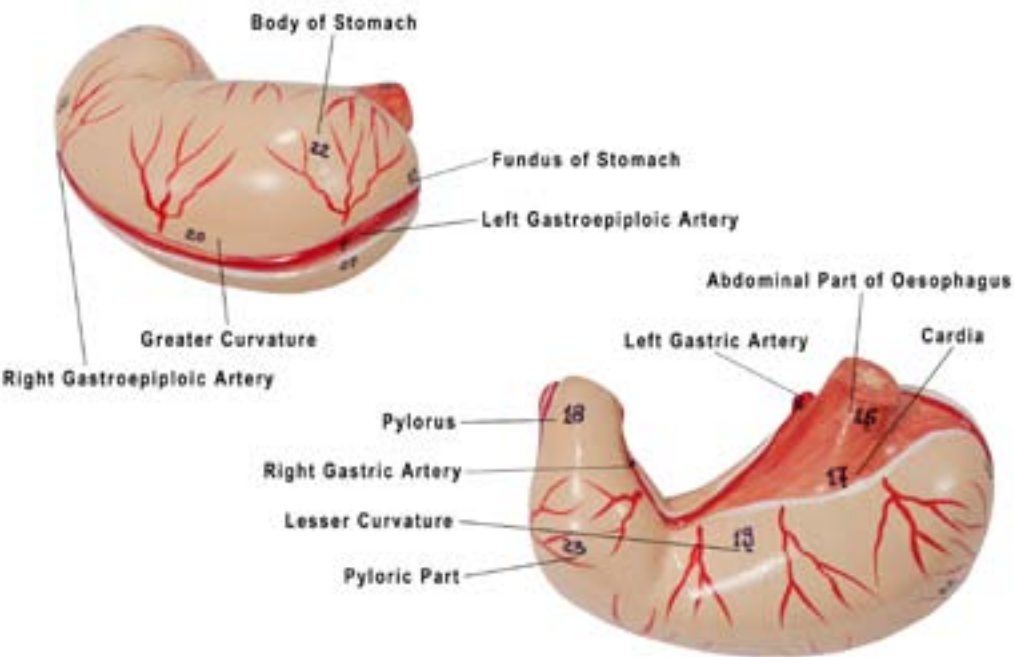












**I. Region of Head and Neck**

- |   |                              |
|---|------------------------------|
| 1. Frontal Belly of Occipitofrontalis Muscle    | 17. Masseter Muscle          |
| 2. Epieranial Aponeurosis                       | 18. Temporalis Muscle        |
| 3. Occipital Belly of Occipitofrontalis Muscle  | 19. Lateral Pterygoid Muscle |
| 4. Auricularis Anterior Muscle                  | 20. Medial Pterygoid Muscle  |
| 5. Auricularis Posterior Muscle                 | 21. Buccinator Muscle        |
| 6. Auricularis Superior Muscle                  | 22. Cerebrum                 |
| 7. Procerus Muscle                              | 23. Frontal Lobe             |
| 8. Orbicularis Oculi Muscle                     | 24. Parietal Lobe            |
| 9. Levator Labii Superioris Alaeque Nasi Muscle | 25. Occipital Lobe           |
| 10. Levator Labii Superioris Muscle             | 26. Temporal Lobe            |
| 11. Zygomaticus Minor Muscle                    | 27. Cerebellum               |
| 12. Zygomaticus Major Muscle                    | 28. Corpus Callosum          |
| 13. Depressor Anguli Oris Muscle                | 29. Septum Pellucidum        |
| 14. Depressor Labii Inferioris Muscle           | 30. Fornix                   |
| 15. Mentalis Muscle                             | 31. Thalamus                 |
| 16. Orbicularis Oris Muscle                     | 32. Midbrain                 |
|   | 33. Pons                     |
|   | 34. Medulla Oblongata        |
|   | 35. Olfactory Bulb           |
|   | 36. Optic Nerve II           |



37. Oculomotor Nerve III
38. Trochlear Nerve IV
39. Trigeminal Nerve V
40. Abducent Nerve VI
41. Facial Nerve VII
42. Vestibulocochlear Nerve VIII
43. Glossopharyngeal Nerve IX
44. Vagus Nerve X
45. Accessory Nerve XI
46. Hypoglossal Nerve XII
47. Sternocleidomastoid Muscle
- 47a. Sternal Head
- 47b. Clavicular Head
48. Submandibular Gland
49. Stylohyoid Muscle
50. Posterior Belly of Digastric Muscle
51. Anterior Belly of Digastric Muscle
52. Mylohyoid Muscle
53. Hyoid Bone
54. Sternohyoid Muscle
55. Superior Belly of Omohyoid Muscle
56. Inferior Belly of Omohyoid Muscle
57. Anterior Scalene Muscle
58. Middle Scalene Muscle
59. Posterior Scalene Muscle
60. Levator Scapulae Muscle
61. Splenius Capitis Muscle
62. Semispinalis Capitis Muscle
63. Thyrohyoid Muscle
64. Sternothyroid Muscle
65. Thyroid Cartilage
66. Thyroid Gland
67. Common Carotid Artery
68. Internal Jugular Vein
69. Brachial Plexus
70. Subclavian Artery
71. Subclavian Vein
72. Parotid Gland

## II. Body Wall

1. Pectoralis Major Muscle
  - a. Clavicular Head
  - b. Sternocostal Head
  - c. Abdominal Head
2. Pectoralis Minor Muscle
3. External Intercostal Muscles
4. Internal Intercostal Muscles
5. Serratus Anterior Muscle
6. External Oblique Muscle
7. Internal Oblique Muscle
8. Transversus Abdominis Muscle
9. Rectus Abdominis Muscle
10. Tendinous Intersection
11. Anterior Layer of Rectus Sheath
12. Umbilicus
13. Linea Alba
14. Pyramidalis Muscle
15. Clavicle
16. Sternum
17. Rib
18. Costal Cartilage
19. Transversus Thoracis Muscle
20. Arcuate Line
21. Diaphragm
22. Subclavius
23. Acromion
24. Spine of Scapula
25. Trapezius Muscle
26. Latissimus Dorsi Muscle
27. Rhomboid Minor Muscle
28. Rhomboid Major Muscle
29. Serratus Posterior Inferior Muscle
30. Erector Spinae Muscle
31. Posterior Layer of Thoracolumbar Fascia
32. Quadratus Lumborum Muscle

## III. Thoracic Viscera

1. Right Lung
2. Left Lung

3. Oblique Fissure
4. Horizontal Fissure of Right Lung
5. Superior Lobe
6. Inferior Lobe
7. Middle Lobe of Right Lung
8. Hilum of Lung
9. Trachea
10. Right Main Bronchus
11. Left Main Bronchus
12. Oesophagus
13. Thoracic Aorta
14. Right Atrium
15. Right Auricle
16. Superior Vena Cava
17. Inferior Vena Cava
18. Oval Fossa
19. Opening of Coronary Sinus
20. Pectinate Muscles
21. Tricuspid Valve
22. Right Ventricle
23. Pulmonary Valve
24. Pulmonary Trunk
25. Ligamentum Arteriosum
26. Left Atrium
27. Left Auricle
28. Left Ventricle
29. Left Pulmonary Veins
30. Right Pulmonary Veins
31. Mitral Valve
32. Aortic Valve
33. Ascending Aorta
34. Descending Aorta
35. Brachiocephalic Trunk
36. Left Common Carotid Artery
37. Left Subclavian Artery
38. Right Coronary Artery
39. Anterior Interventricular Branch of Left Artery
40. Circumflex Branch of Left Artery
41. Great Cardiac Vein
42. Middle Cardiac Vein

43. Small Cardiac Vein
44. Coronary Sinus

## IV. Abdominal and Pelvic Viscera

1. Left Lobe of Liver
2. Right Lobe of Liver
3. Falciform Ligament of Liver
4. Round Ligament of Liver
5. Quadrate Lobe
6. Caudate Lobe
7. Gallbladder
8. Cystic Duct
9. Common Hepatic Duct
10. Common Bile Duct
11. Proper Hepatic Artery
12. Hepatic Portal Vein
13. Inferior Vena Cava
14. Ligament of Inferior Vena Cava
15. Bare Area of Liver
16. Abdominal Part of Oesophagus
17. Cardia
18. Pylorus
19. Lesser Curvature
20. Greater Curvature
21. Fundus of Stomach
22. Body of Stomach
23. Pyloric Part
24. Left Gastric Artery
25. Right Gastric Artery
26. Short Gastric Artery
27. Left Gastroepiploic Artery
28. Right Gastroepiploic Artery
29. Superior Part of Duodenum
30. Descending Part of Duodenum
31. Horizontal Part of Duodenum
32. Ascending Part of Duodenum
33. Head of Pancreas
34. Body of Pancreas
35. Tail of Pancreas
36. Pancreatic Duct
37. Accessory Pancreatic Duct

38. Major Duodenal Papilla
39. Minor Duodenal Papilla
40. Superior Mesenteric Artery
41. Superior Mesenteric Vein
42. Spleen
43. Splenic Artery
44. Splenic Vein
45. Jejunum
46. Ileum
47. Caecum
48. Vermiform Appendix
49. Ascending Colon
50. Transverse Colon
51. Descending Colon
52. Sigmoid Colon
53. Left Kidney
54. Left Suprarenal Gland
55. Right Kidney
56. Right Suprarenal Gland
57. Ureter
58. Abdominal Aorta
59. Celiac Trunk
60. Left Renal Artery
61. Left Renal Vein
62. Left Suprarenal Vessels
63. Inferior Mesenteric Artery
64. Left Common Iliac Artery
65. Left Common Iliac Vein
66. Left External Iliac Artery
67. Left External Iliac Vein
68. Left Testicular (Ovary) Artery
69. Right Testicular (Ovary) Vein
70. Median Sacral Artery
71. Rectum
72. Urinary Bladder

#### **V. Upper Limb**

1. Deltoid Muscle
2. Supraspinatus Muscle
3. Infraspinatus Muscle
4. Teres Minor Muscle

5. Teres Major Muscle
6. Subscapularis Muscle
7. Biceps Brachii Muscle
  - a. Short Head
  - b. Long Head
8. Coracobrachialis Muscle
9. Brachialis Muscle
10. Triceps Brachii Muscle
  - a. Long Head
  - b. Lateral Head
  - c. Medial Head
11. Pronator Teres Muscle
12. Flexor Carpi Radialis Muscle
13. Palmaris Longus Muscle
14. Flexor Digitorum Superficialis Muscle
15. Flexor Carpi Ulnaris Muscle
16. Flexor Pollicis Longus Muscle
17. Flexor Digitorum Profundus Muscle
18. Pronator Quadratus Muscle
19. Brachioradialis Muscle
20. Extensor Carpi Radialis Longus Muscle
21. Extensor Carpi Radialis Brevis Muscle
22. Extensor Digitorum Muscle
23. Extensor Digiti Minimi Muscle
24. Extensor Carpi Ulnaris Muscle
25. Anconeus Muscle
26. Supinator Muscle
27. Abductor Pollicis Longus Muscle
28. Extensor Pollicis Brevis Muscle
29. Extensor Pollicis Longus Muscle
30. Extensor Indicis Muscle
31. Abductor Pollicis Brevis Muscle
32. Flexor Pollicis Brevis Muscle
33. Opponens Pollicis Muscle
34. Tendon of Flexor Digitorum Superficialis
35. Abductor Digiti Minimi
36. Flexor Digiti Minimi Brevis Muscle
37. Opponens Digiti Minimi

38. Dorsal Interosseous Muscles
39. Axillary Artery
40. Lateral Cord of Brachial Plexus
41. Medial Cord of Brachial Plexus
42. Posterior Cord of Brachial Plexus
43. Median Nerve
44. Ulnar Nerve
45. Axillary Nerve
46. Posterior Circumflex Humeral Artery
47. Radial Nerve
48. Profunda Brachii Artery
49. Brachial Artery
50. Radial Artery
51. Ulnar Artery
52. Deep Branch of Radial Nerve
53. Posterior Interosseous Artery

#### **VI. Lower Limb**

1. Iliopsoas Muscle
  - a. Psoas Major Muscle
  - b. Iliacus Muscle
2. Sartorius Muscle
3. Quadriceps Femoris Muscle
  - a. Rectus Femoris Muscle
  - b. Vastus Lateralis Muscle
  - c. Vastus Medialis Muscle
  - d. Vastus Intermedius Muscle
4. Tendon of Quadriceps Femoris Muscle
5. Patella
6. Patellar Ligament
7. Tibial Tuberosity
8. Tensor Fasciae Muscle
9. Iliotibial Tract
10. Pectineus Muscle
11. Adductor Longus Muscle
12. Adductor Brevis Muscle
13. Gracilis Muscle
14. Adductor Magnus Muscle
15. Gluteus Maximus Muscle
16. Gluteus Medius Muscle
17. Gluteus Minimus Muscle
18. Piriformis Muscle
19. Obturator Internus Muscle
20. Gemellus Superior Muscle
21. Gemellus Inferior Muscle
22. Quadratus Femoris Muscle
23. Greater Trochanter of Femur
24. Sacrotuberous Ligament
25. Ischial Tuberosity
26. Biceps Femoris Muscle
  - a. Long Head
  - b. Short Head
27. Semitendinosus Muscle
28. Semimembranous Muscle
29. Pes Anserinus
30. Tibialis Anterior Muscle
31. Extensor Hallucis Longus Muscle
32. Extensor Digitorum Muscle
33. Medial Surface of Body of Tibia
34. Medial Malleolus of Tibia
35. Lateral Malleolus of Tibia
36. Fibularis Longus Muscle
37. Fibularis Brevis Muscle
38. Tendon of Fibularis Tertius Muscle
39. Medial Head of Gastrocnemius Muscle
40. Lateral Head of Gastrocnemius Muscle
41. Plantaris Muscle
42. Soleus Muscle
43. Calcaneal (Achilles) Tendon
44. Calcaneal Tuberosity
45. Popliteus Muscle
46. Flexor Digitorum Longus Muscle
47. Tibialis Posterior Muscle
48. Flexor Hallucis Longus Muscle
49. Extensor Hallucis Brevis Muscle
50. Extensor Digitorum Longus Muscle
51. Flexor Digitorum Brevis Muscle

- 
52. Tendon of Flexor Digitorum Longus Muscle
  53. Tendon of Flexor Hallucis Longus Muscle
  54. Quadratus Plantae Muscle
  55. Transverse Head of Adductor Hallucis Muscle
  56. Oblique Head of Adductor Hallucis Muscle
  57. Dorsal Interosseous Muscle
  58. Plantar Interosseous Muscle
  59. Abductor Hallucis Muscle
  60. Flexor Hallucis Muscle
  61. Lumbrical Muscles
  62. Abductor Digiti Minimi Muscle
  63. Femoral Nerve
  64. Femoral Artery
  65. Femoral Vein
  66. Sciatic Nerve
  67. Inferior Gluteal Nerve and Artery
  68. Internal Pudendal Nerve, Vein, and Artery
  69. Tibial Nerve
  70. Popliteal Artery and Vein
  71. Posterior Tibial Artery
  72. Common Fibular Nerve; Common Peroneal Nerve
  73. Anterior Tibial Artery
  74. Deep Fibular Nerve; Deep Peroneal Nerve

