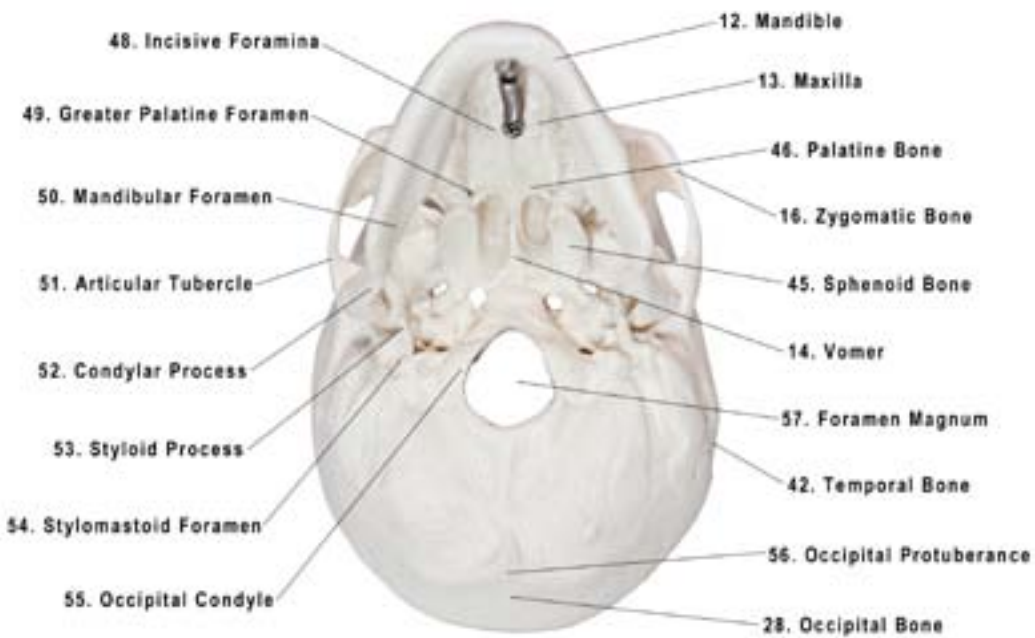
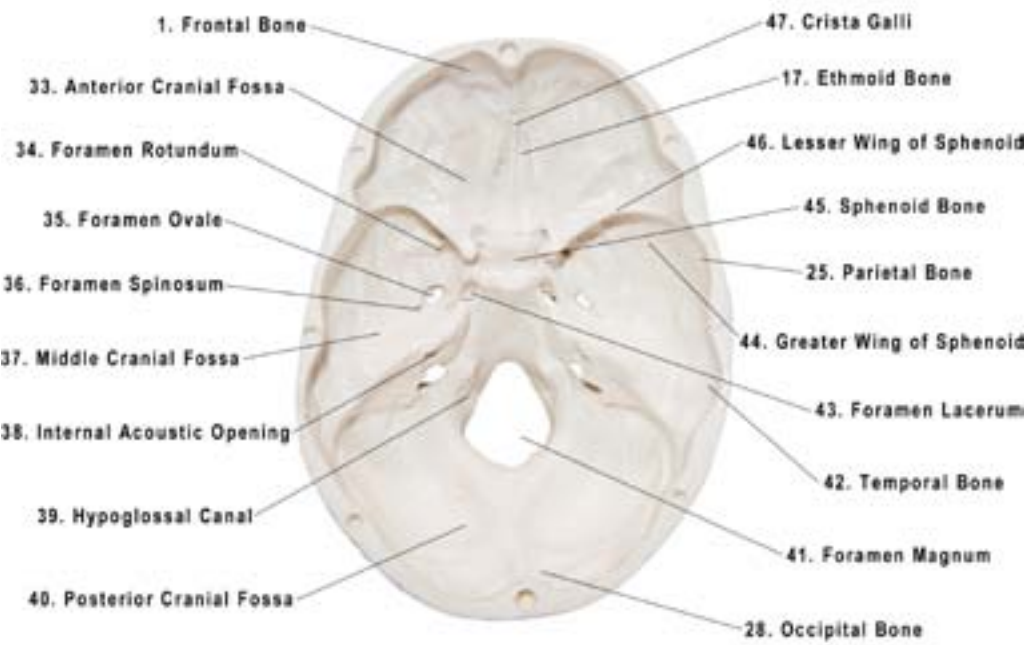
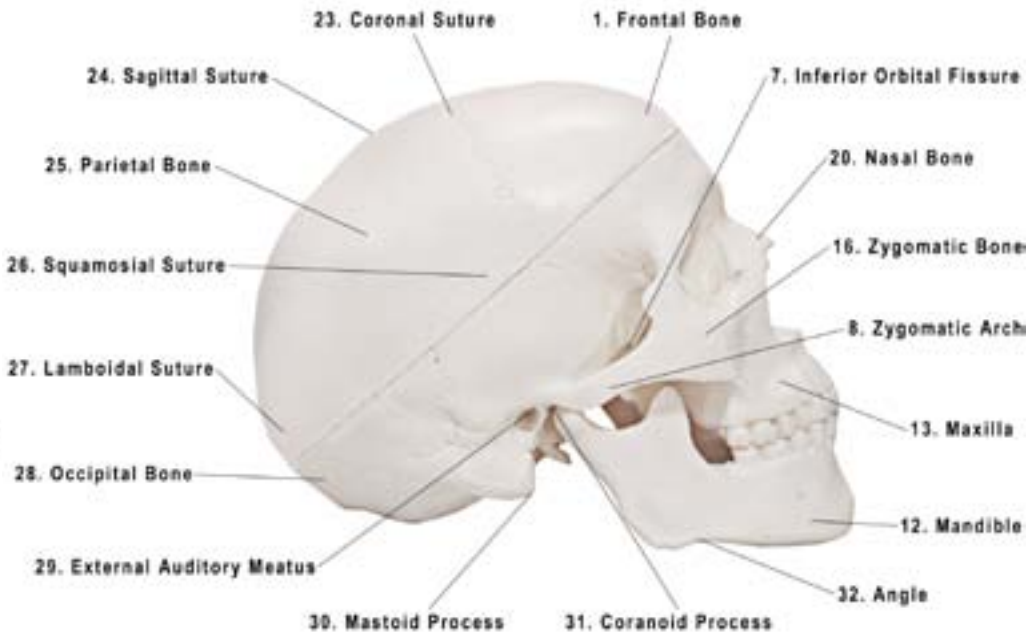
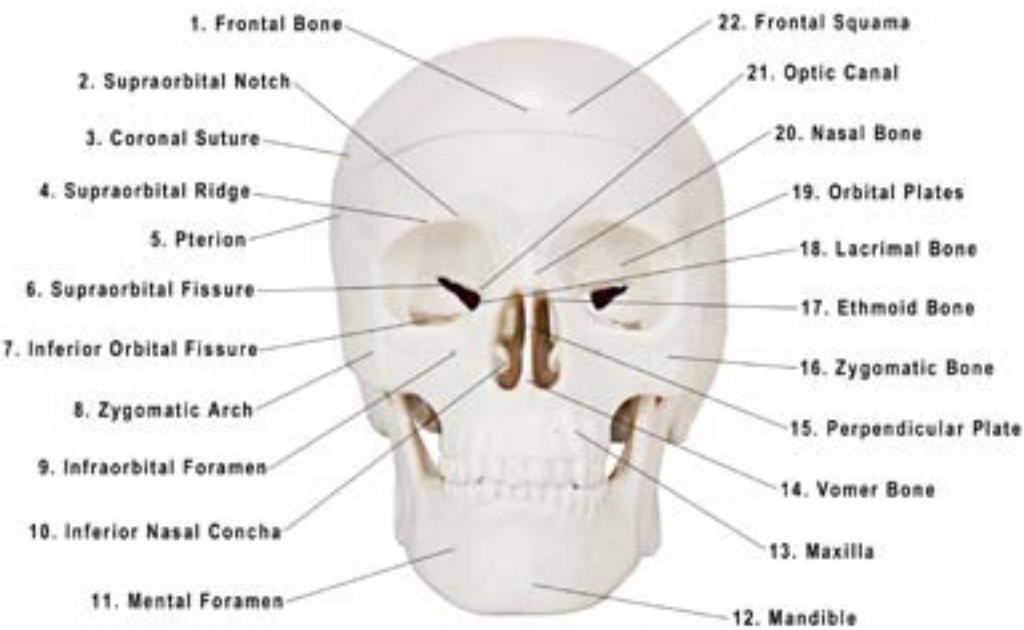
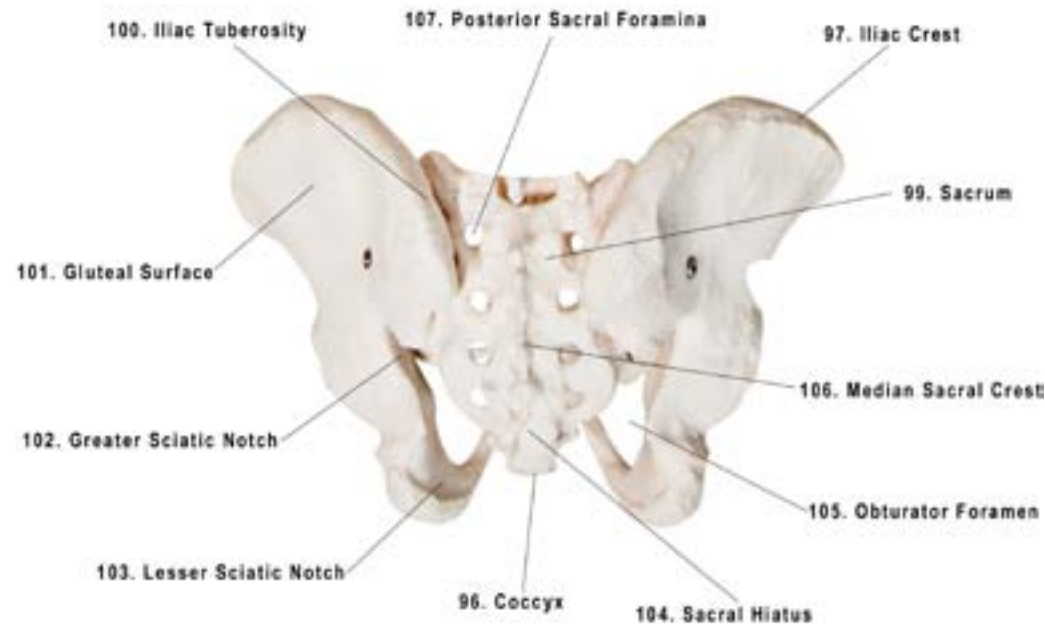
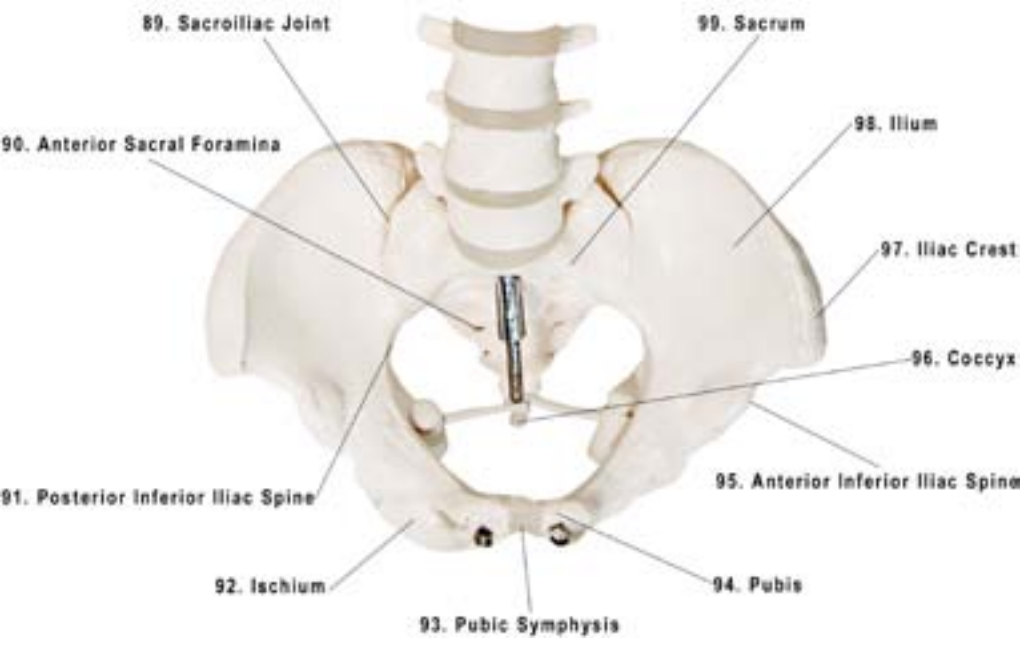
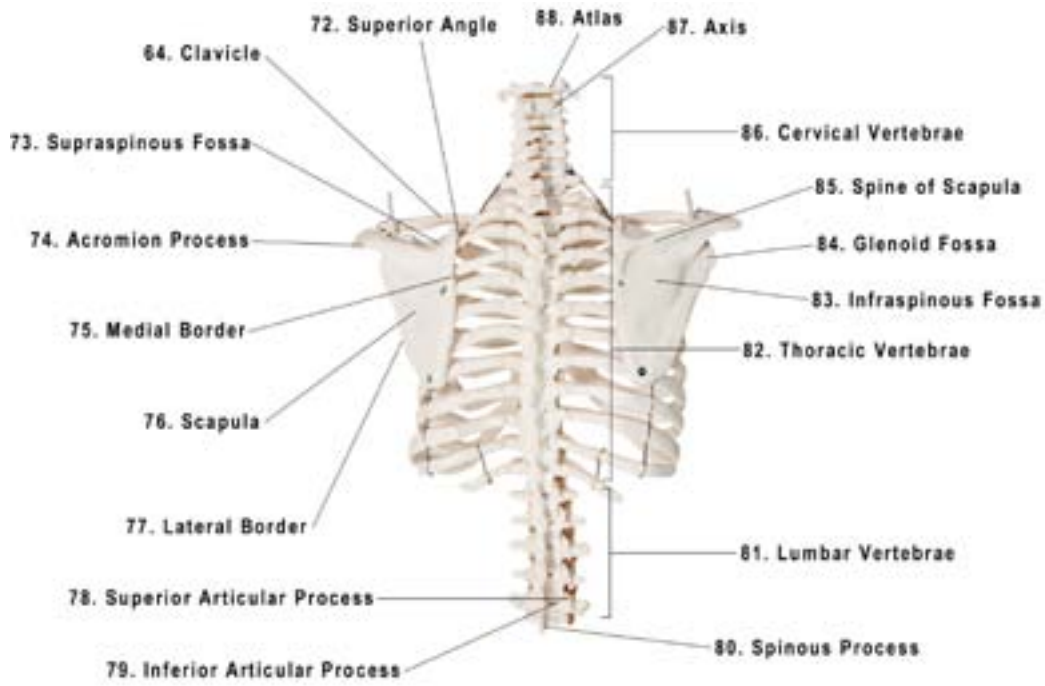
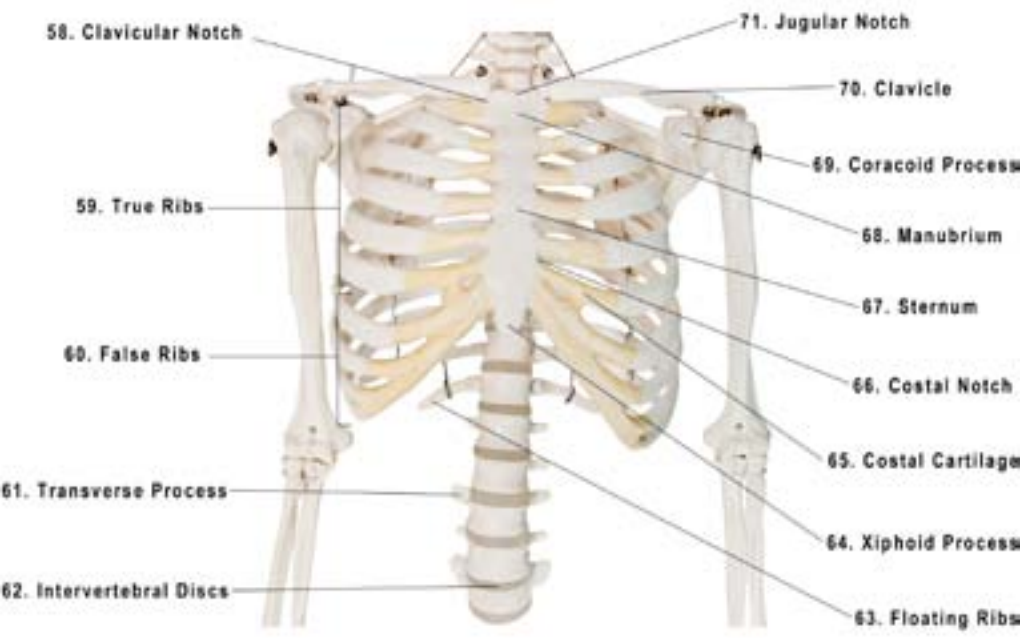


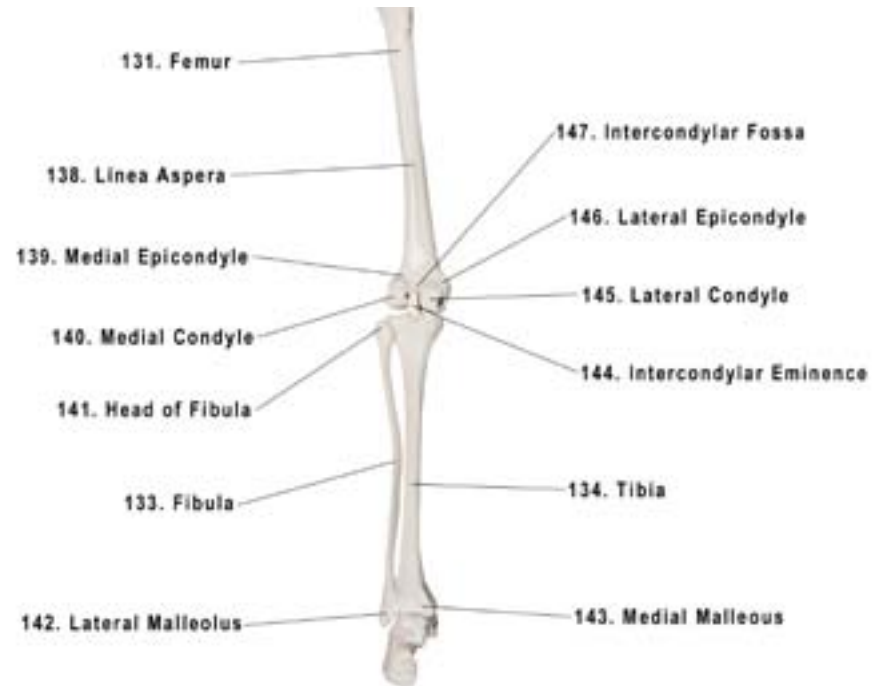
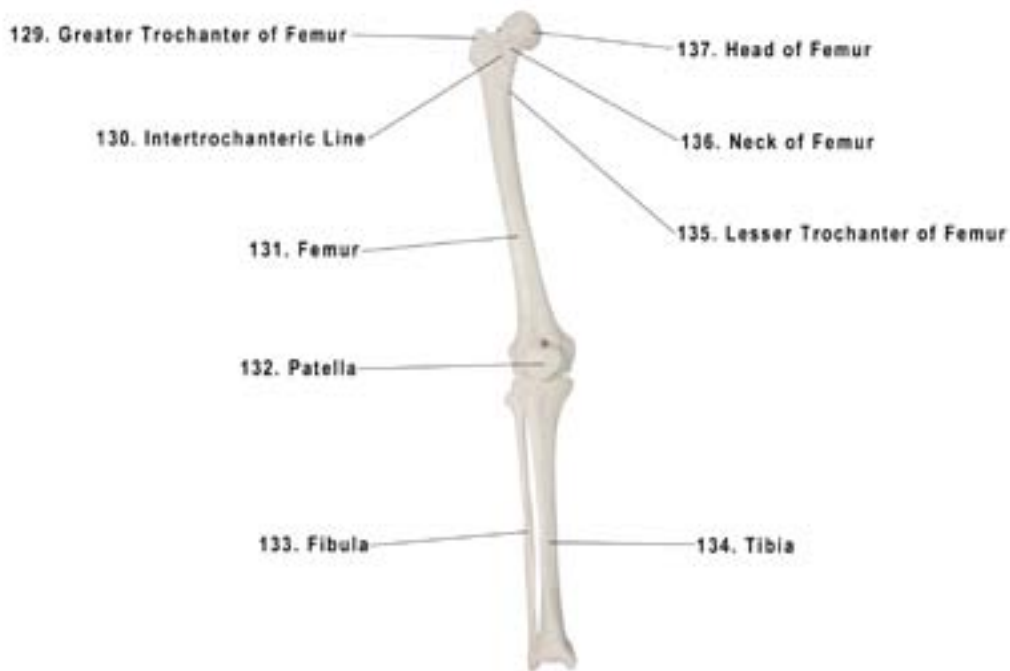
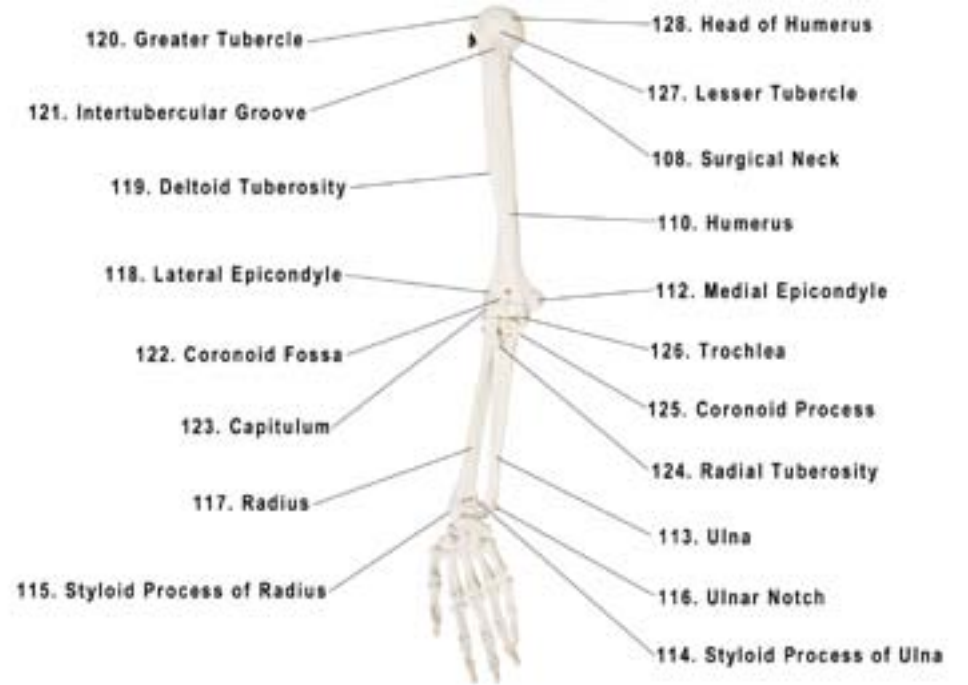
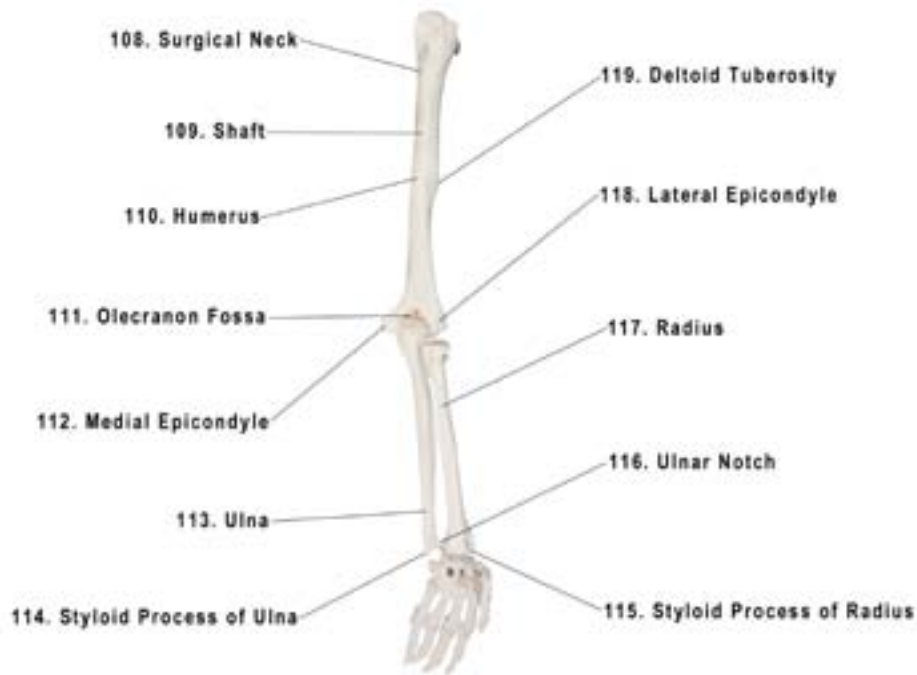


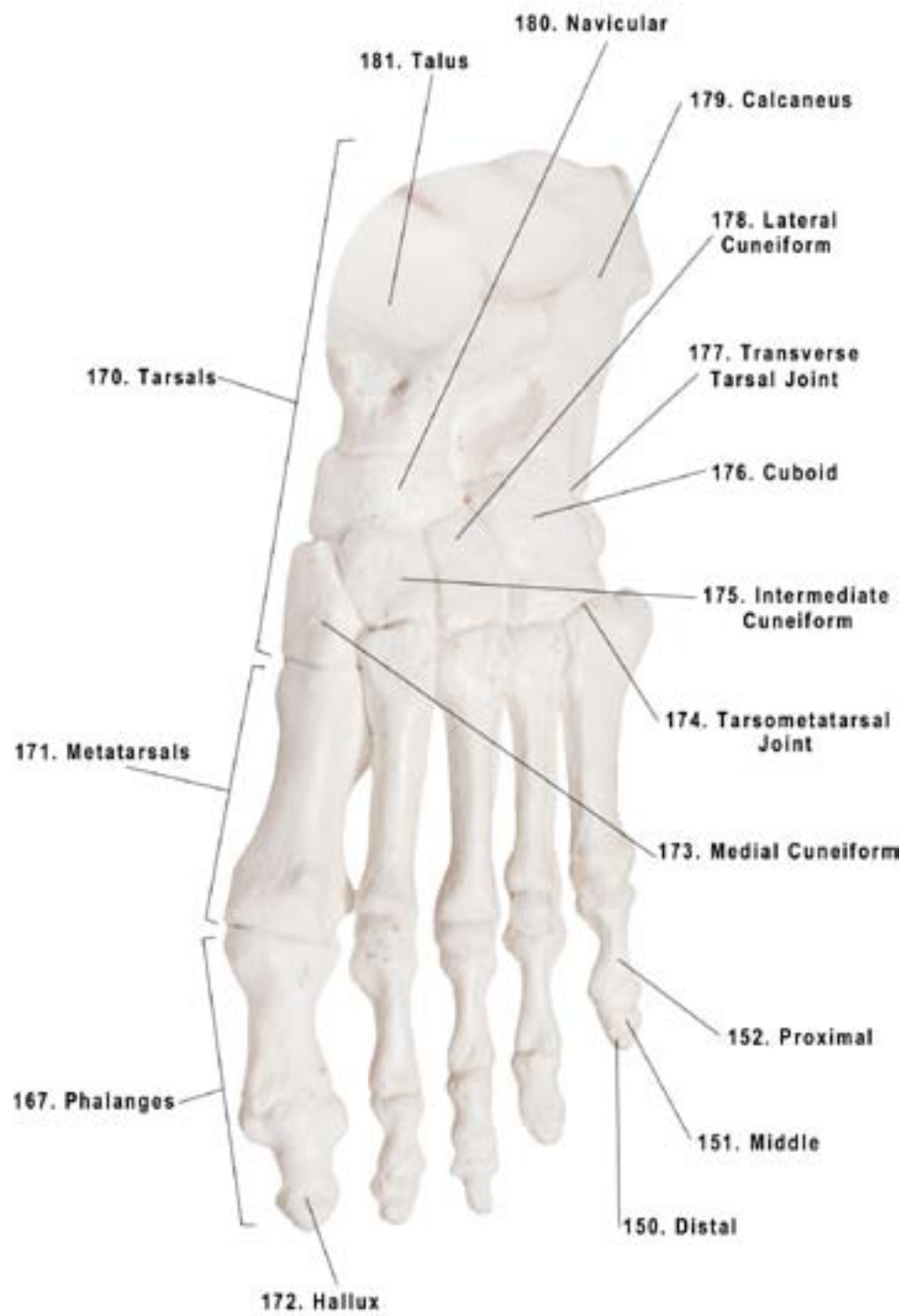
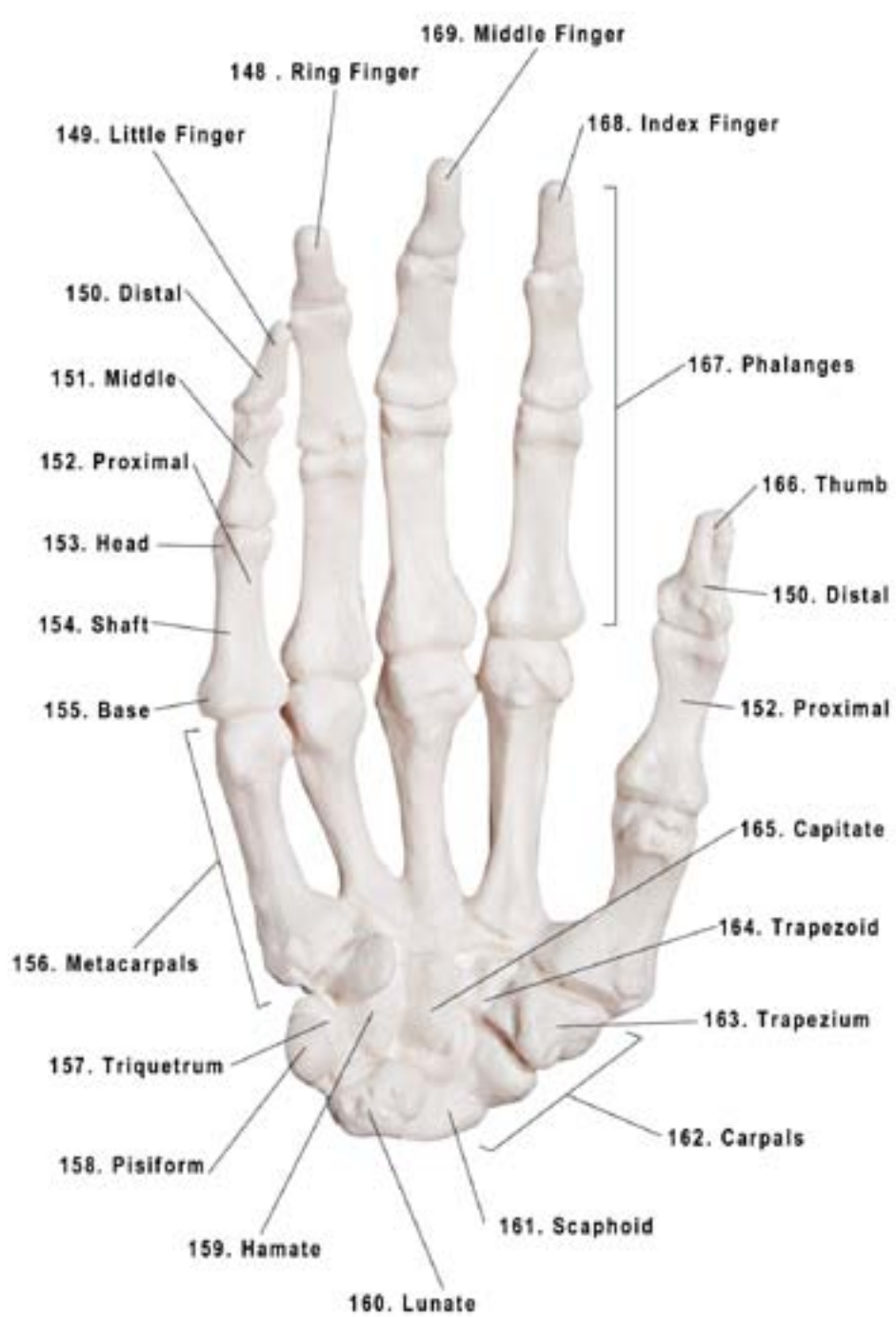
**Axis Scientific Miniature Human Skeleton**

**A-105168**









1. Frontal Bone
2. Supraorbital Notch
3. Coronal Suture
4. Supraorbital Ridge
5. Pterion
6. Supraorbital Fissure
7. Inferior Orbital Fissure
8. Zygomatic Arch
9. Infraorbital Foramen
10. Inferior Nasal Concha
11. Mental Foramen
12. Mandible
13. Maxilla
14. Vomer Bone
15. Perpendicular Plate
16. Zygomatic Bone
17. Ethmoid Bone
18. Lacrimal Bone
19. Orbital Plates
20. Nasal Bone
21. Optic Canal
22. Frontal Squama
23. Coronal Suture
24. Sagittal Suture
25. Parietal Bone
26. Squamosial Suture
27. Lamboidal Suture
28. Occipital Bone
29. External Auditory Meatus
30. Mastoid Process
31. Coronoid Process
32. Angle
33. Anterior Cranial Fossa
34. Foramen Rotundum
35. Foramen Ovale
36. Foramen Spinosum
37. Middle Cranial Fossa
38. Internal Acoustic Opening
39. Hypoglossal Canal
40. Posterior Cranial Fossa
41. Foramen Magnum
42. Temporal Bone
43. Foramen Lacerum
44. Greater Wing of Sphenoid
45. Sphenoid Bone
46. Lesser Wing of Sphenoid
47. Crista Galli
48. Incisive Foramina
49. Greater Palatine Foramen
50. Mandibular Foramen
51. Articular Tubercle
52. Condylar Process
53. Styloid Process
54. Stylomastoid Foramen
55. Occipital Condyle
56. Occipital Protuberance
57. Foramen Magnum
58. Clavicular Notch
59. True Ribs
60. False Ribs
61. Transverse Process
62. Intervertebral Discs
63. Floating Ribs
64. Xiphoid Process
65. Costal Cartilage
66. Costal Notch
67. Sternum
68. Manubrium
69. Coracoid Process
70. Clavicle
71. Jugular Notch
71. Superior Angle
73. Supraspinous Fossa
74. Acromion Process
75. Medial Border
76. Scapula
77. Lateral Border
78. Superior Articular Process
79. Inferior Articular Process
80. Spinous Process
81. Lumbar Vertebrae
82. Thoracic Vertebrae
83. Infraspinous Fossa
84. Glenoid Fossa
85. Spine of Scapula
86. Cervical Vertebrae
87. Axis
88. Atlas
89. Sacroiliac Joint
90. Anterior Sacral Foramina
91. Posterior Inferior Iliac Spine
92. Ischium
93. Pubic Symphysis
94. Pubis
95. Anterior Inferior Iliac Spine
96. Coccyx
97. Iliac Crest
98. Ilium
99. Sacrum
100. Iliac Tuberosity
101. Gluteal Surface
102. Greater Sciatic Notch
103. Lesser Sciatic Notch
104. Sacral Hiatus
105. Obturator Foramen
106. Median Sacral Crest
107. Posterior Sacral Foramina
108. Surgical Neck
109. Shaft
110. Humerus
111. Olecranon Fossa
112. Medial Epicondyle
113. Ulna
114. Styloid Process of Ulna
115. Styloid Process of Radius
116. Ulnar Notch
117. Radius
118. Lateral Epicondyle
119. Deltoid Tuberosity
120. Greater Tubercle
121. Intertubercular Groove
122. Coronoid Fossa
123. Capitulum
124. Radial Tuberosity
125. Coronoid Process
126. Trochlea
127. Lesser Tubercle
128. Head of Humerus
129. Greater Trochanter of Femur
130. Intertrochanteric Line
131. Femur
132. Patella
133. Fibula
134. Tibia
135. Lesser Trochanter of Femur
136. Neck of Femur
137. Head of Femur
138. Linea Aspera
139. Medial Epicondyle
140. Medial Condyle
141. Head of Fibula
142. Lateral Malleolus
143. Medial Malleolus
144. Intercondylar Eminence
145. Lateral Condyle
146. Lateral Epicondyle
147. Intercondylar Fossa
148. Ring Finger

- 149. Little Finger
- 150. Distal
- 151. Middle
- 152. Proximal
- 153. Head
- 154. Shaft
- 155. Base
- 156. Metacarpals
- 157. Triquetrum
- 158. Pisiform
- 159. Hamate
- 160. Lunate
- 161. Scaphoid
- 162. Carpals
- 163. Trapezium
- 164. Trapezoid
- 165. Capitate
- 166. Thumb
- 167. Phalanges
- 168. Index Finger
- 169. Middle Finger
- 170. Tarsals
- 171. Metatarsals
- 172. Hallux
- 173. Medial Cuneiform
- 174. Tarsometatarsal Joint
- 175. Intermediate Cuneiform
- 176. Cuboid
- 177. Transverse Tarsal Joint
- 178. Lateral Cuneiform
- 179. Navicular
- 180. Calcaneous
- 181. Talus