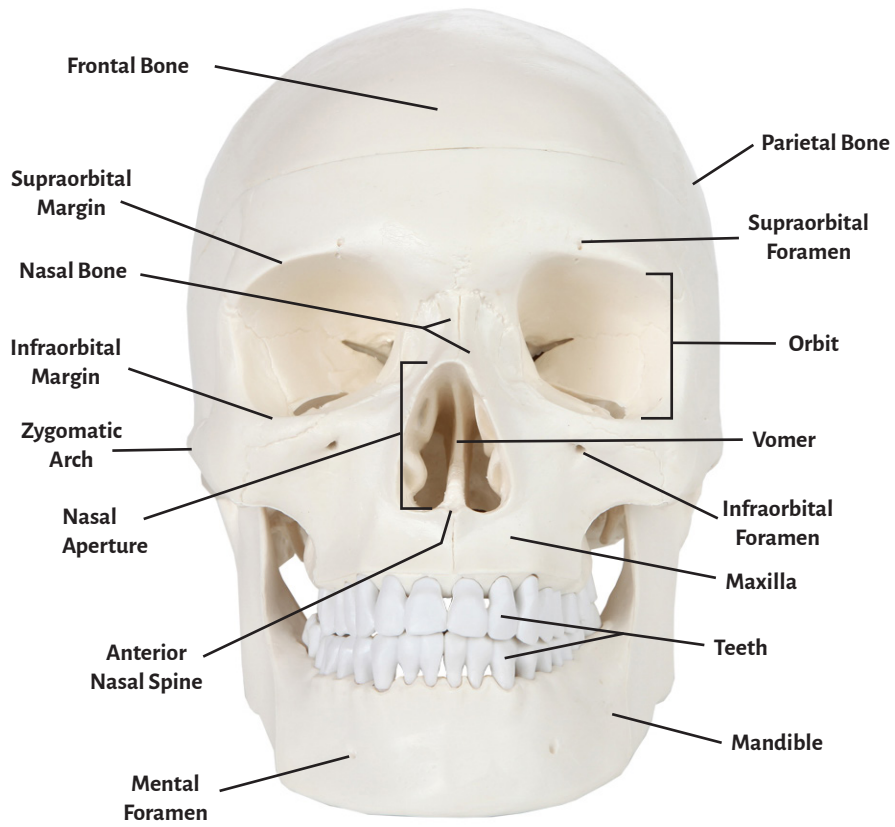




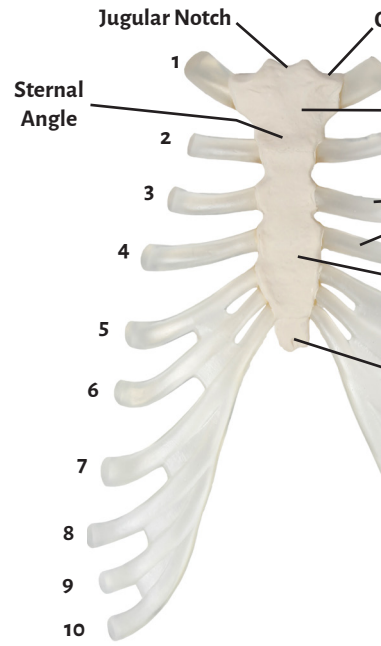
**Axis Scientific Half Disarticulated Human Skeleton**

**A-105171**

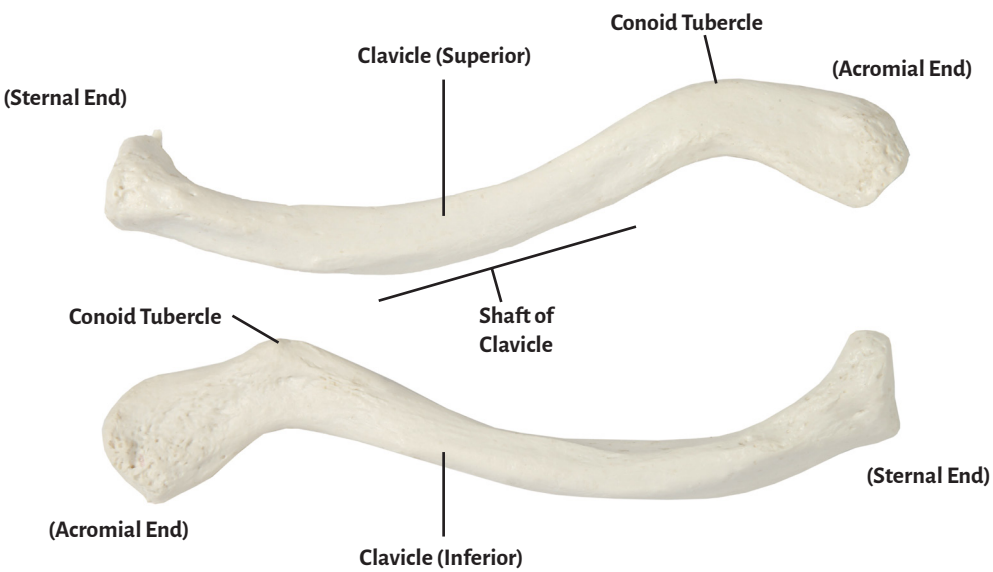
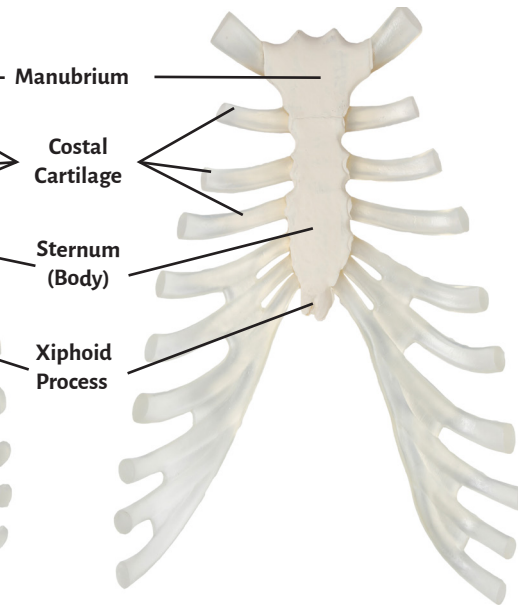
**Skull (Anterior)**



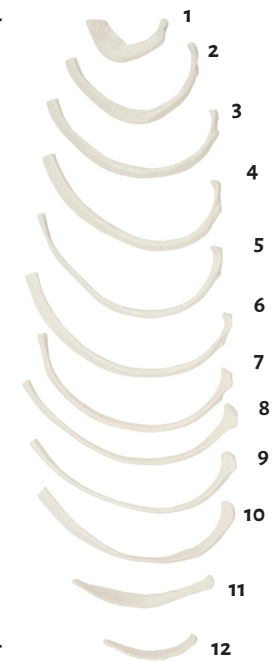
**Sternum (Anterior)**



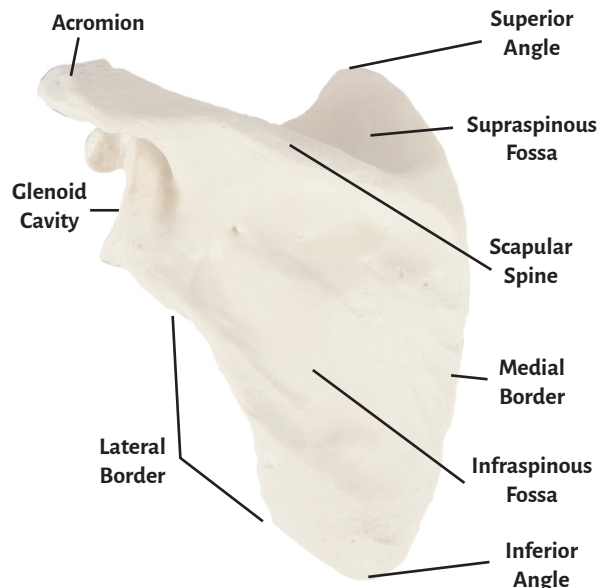
**Sternum (Posterior)**



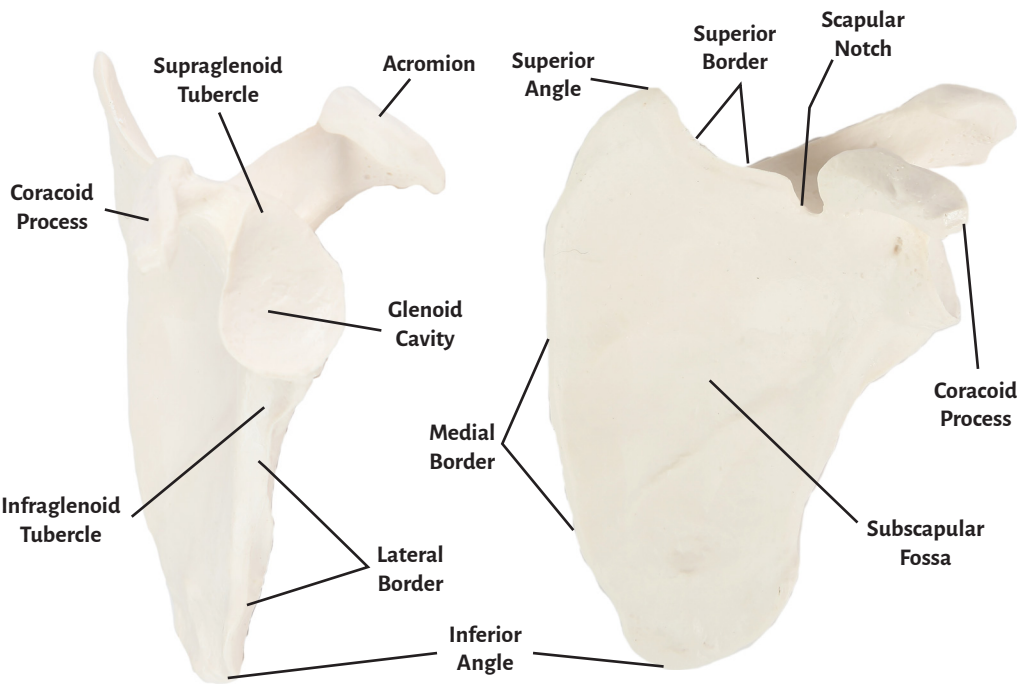
**Ribs (Left 1-12)**



\*\* True Ribs #1-7  
 False Ribs #8-10  
 Floating Ribs #11-12

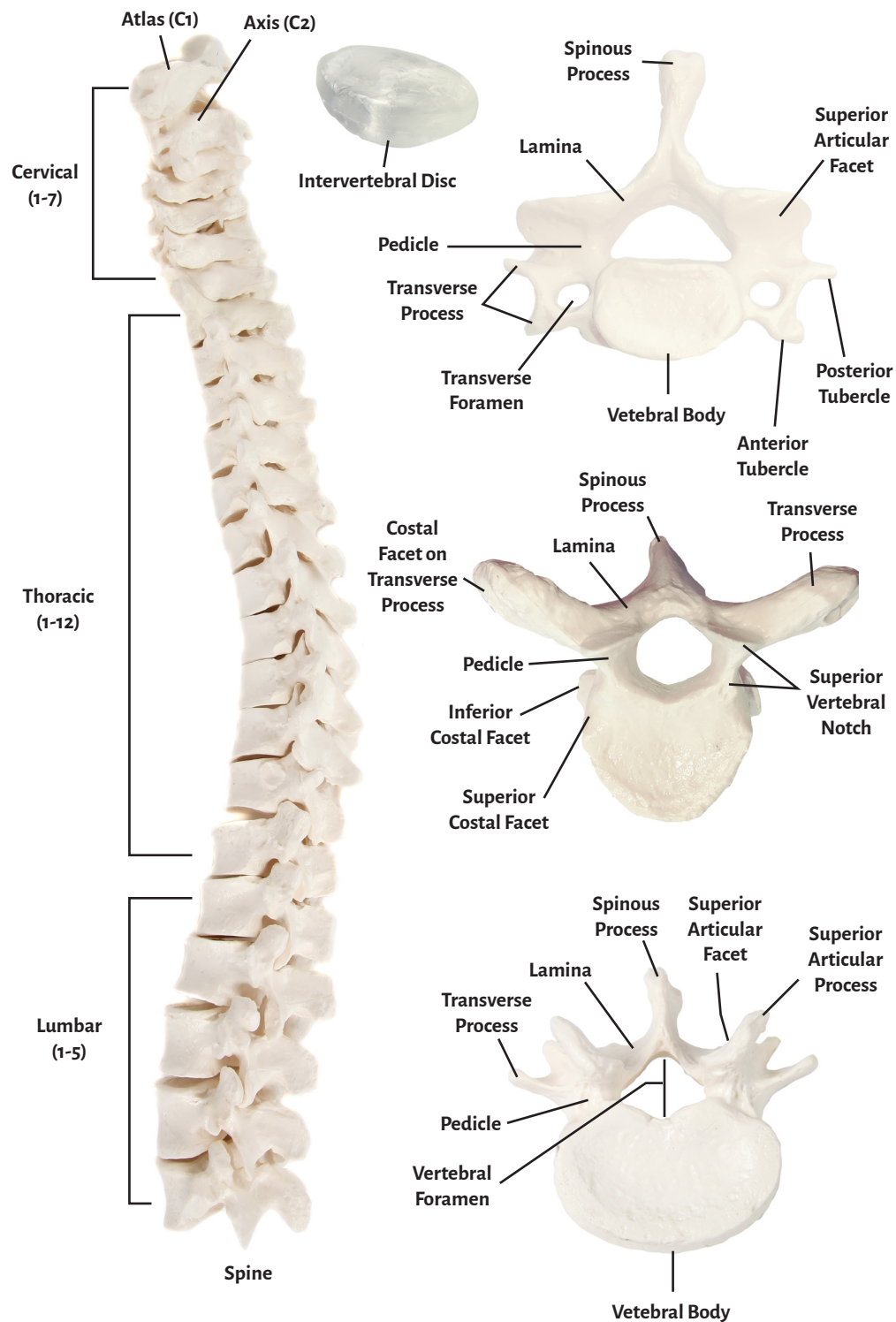


Left Scapula (Posterior)



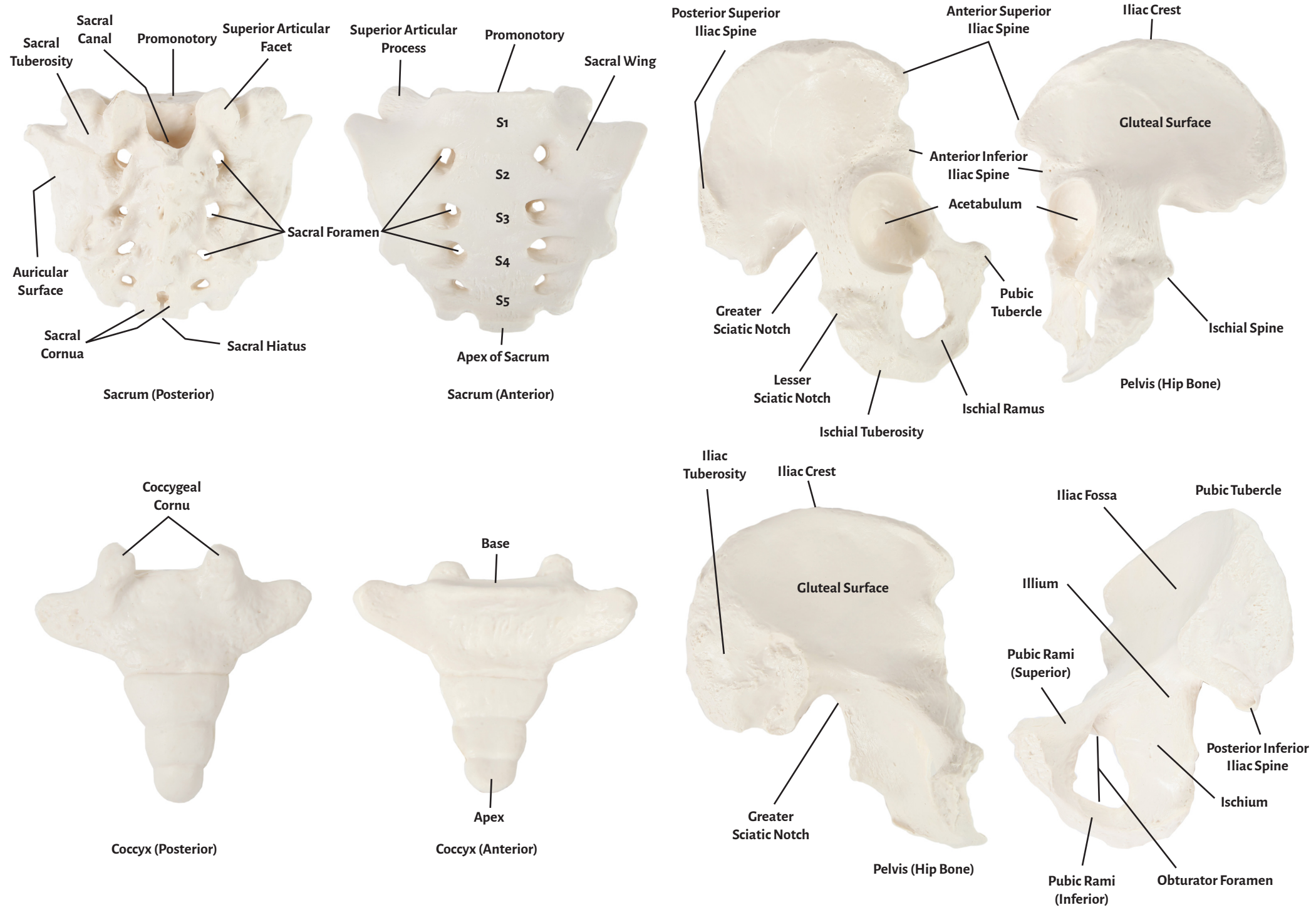
Left Scapula (Lateral)

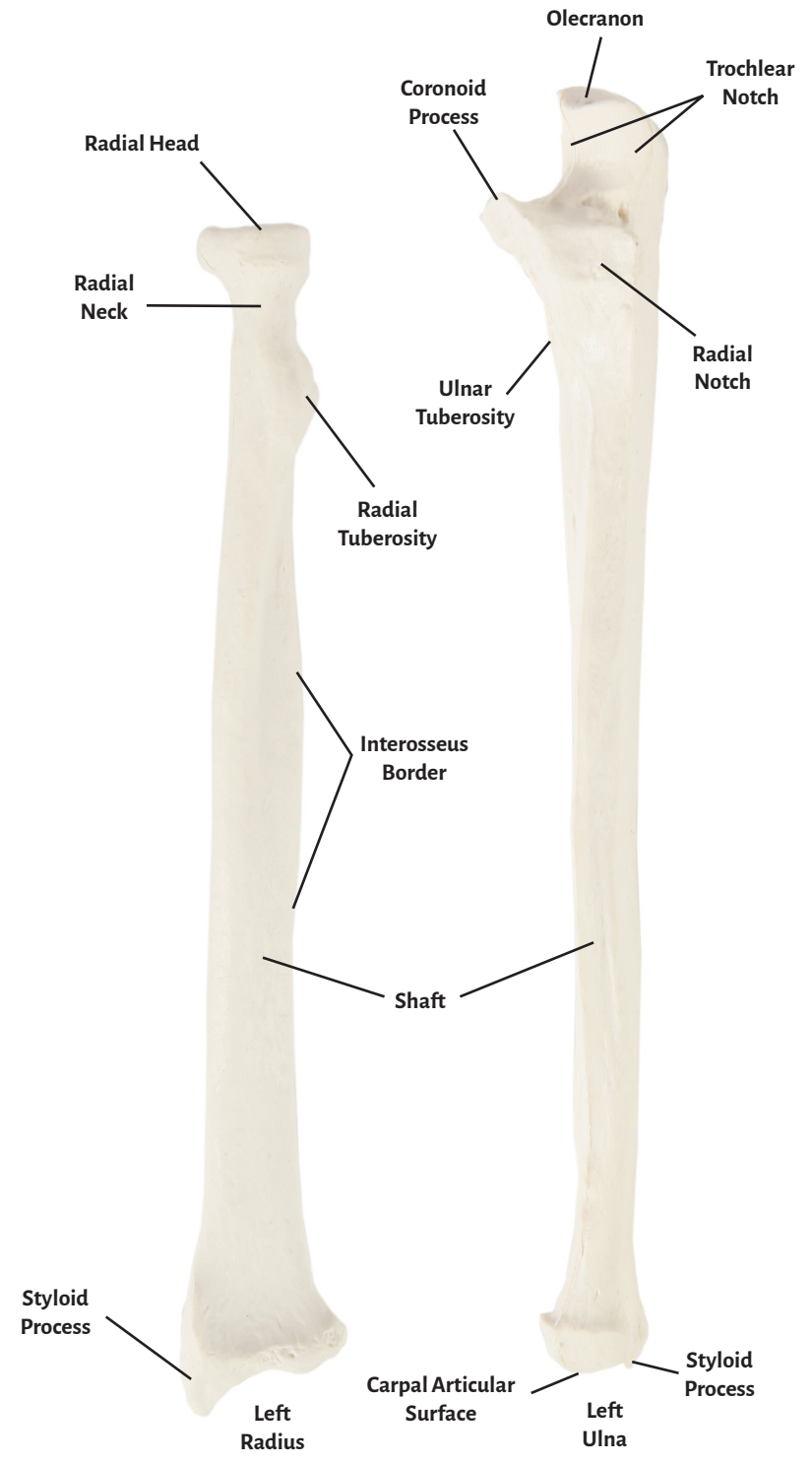
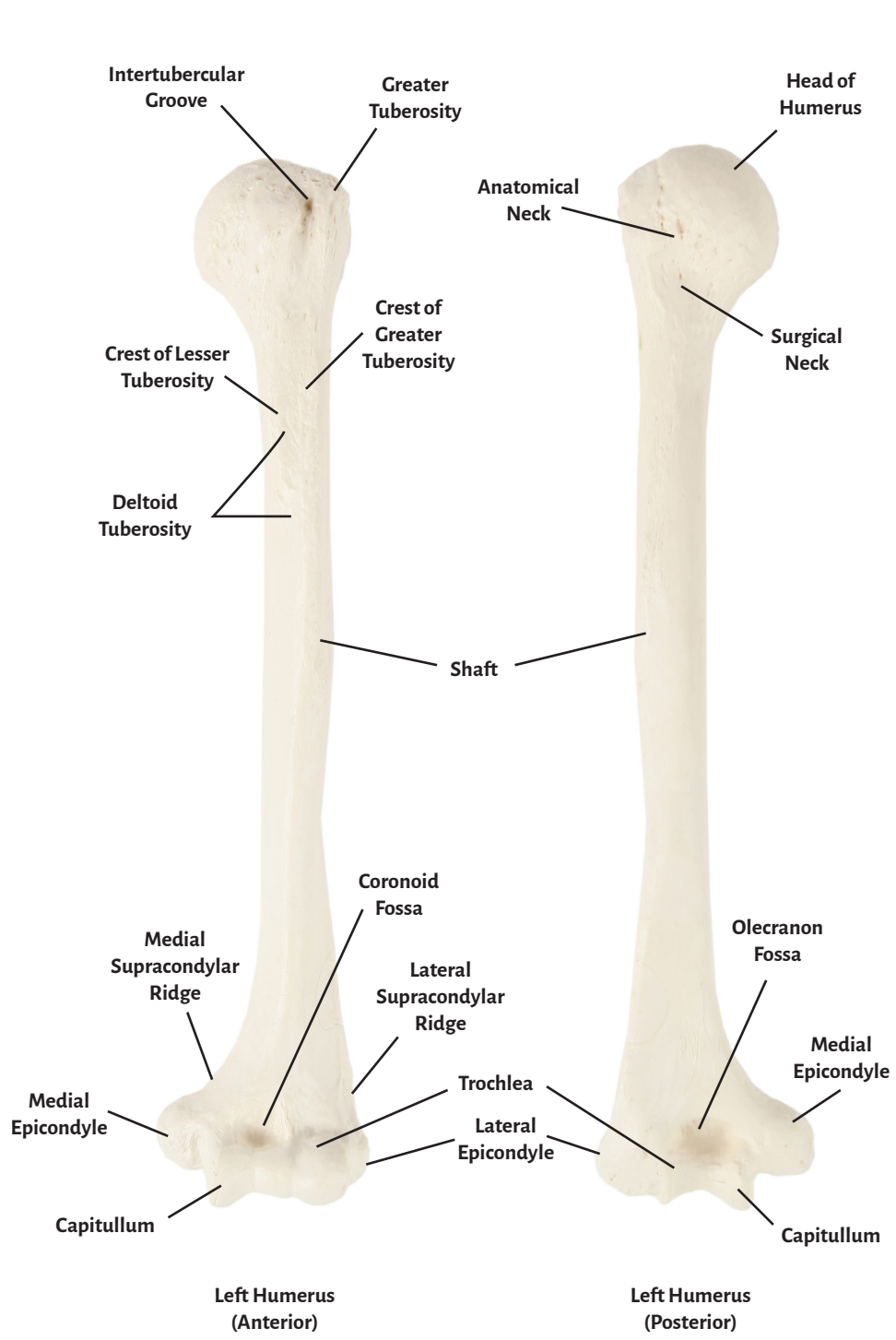
Left Scapula (Anterior)



Spine

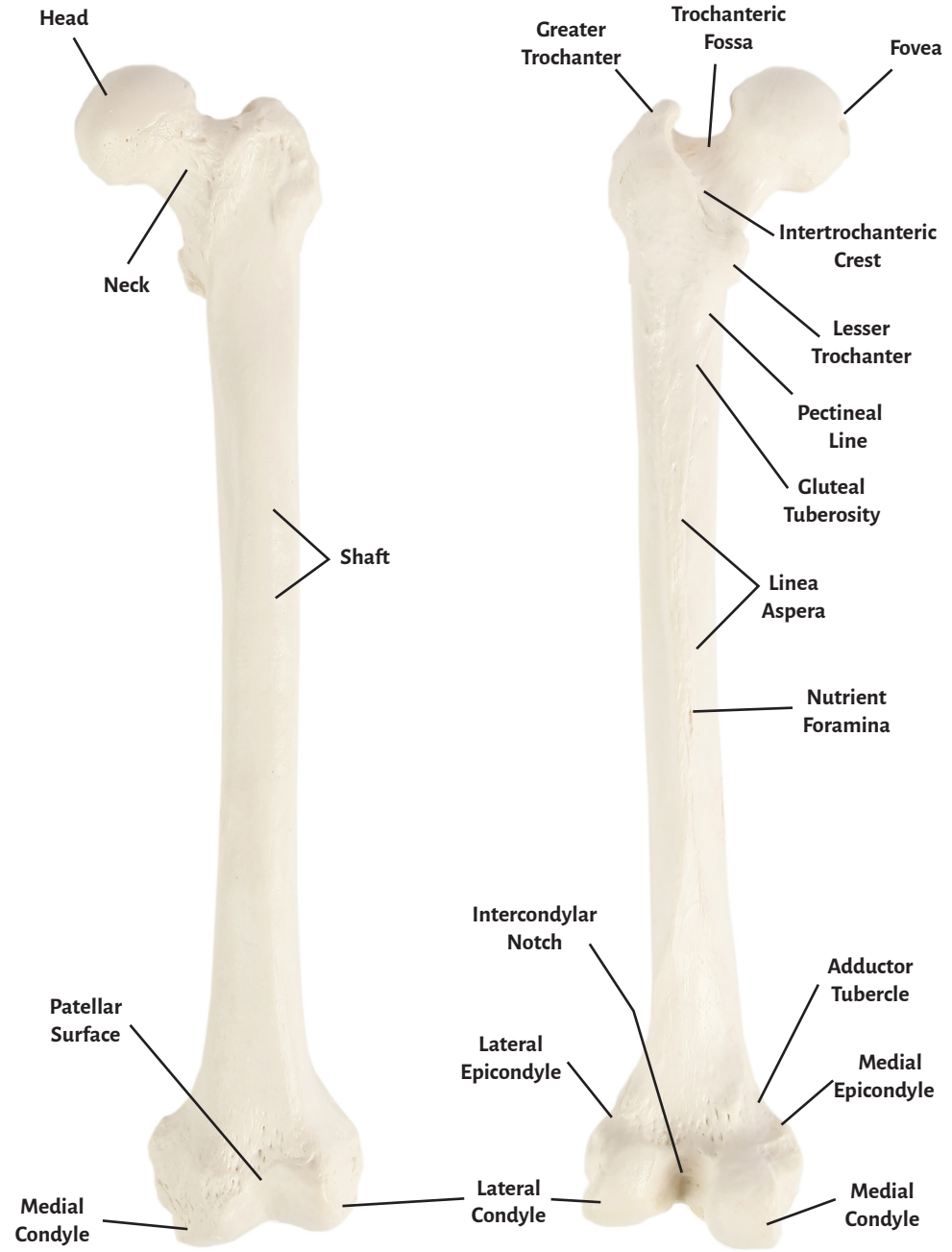
Vertebral Body





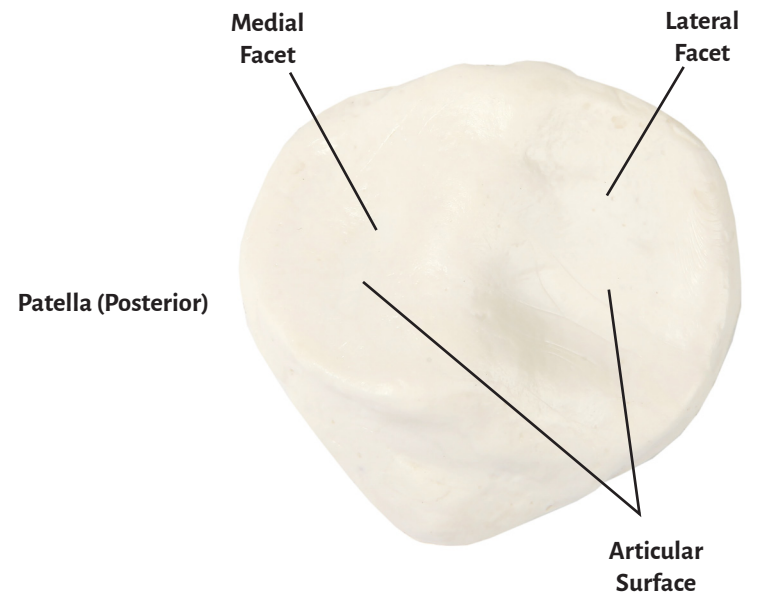
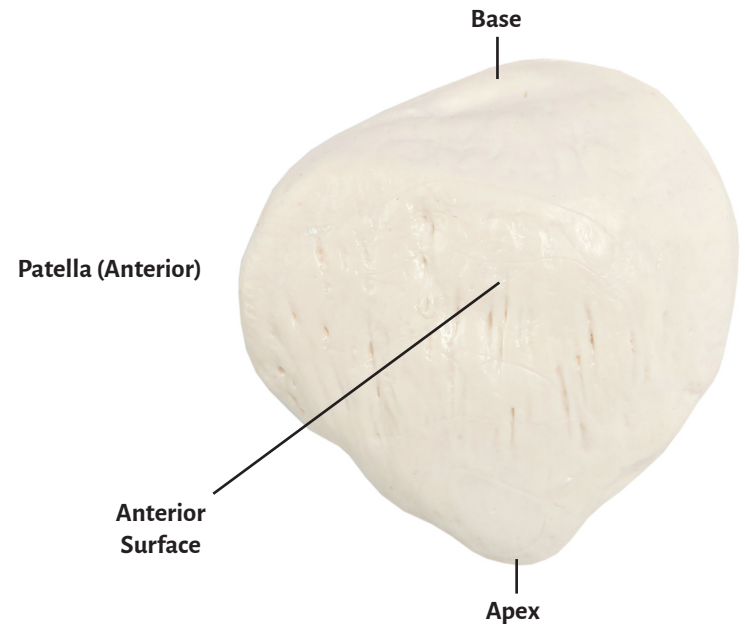
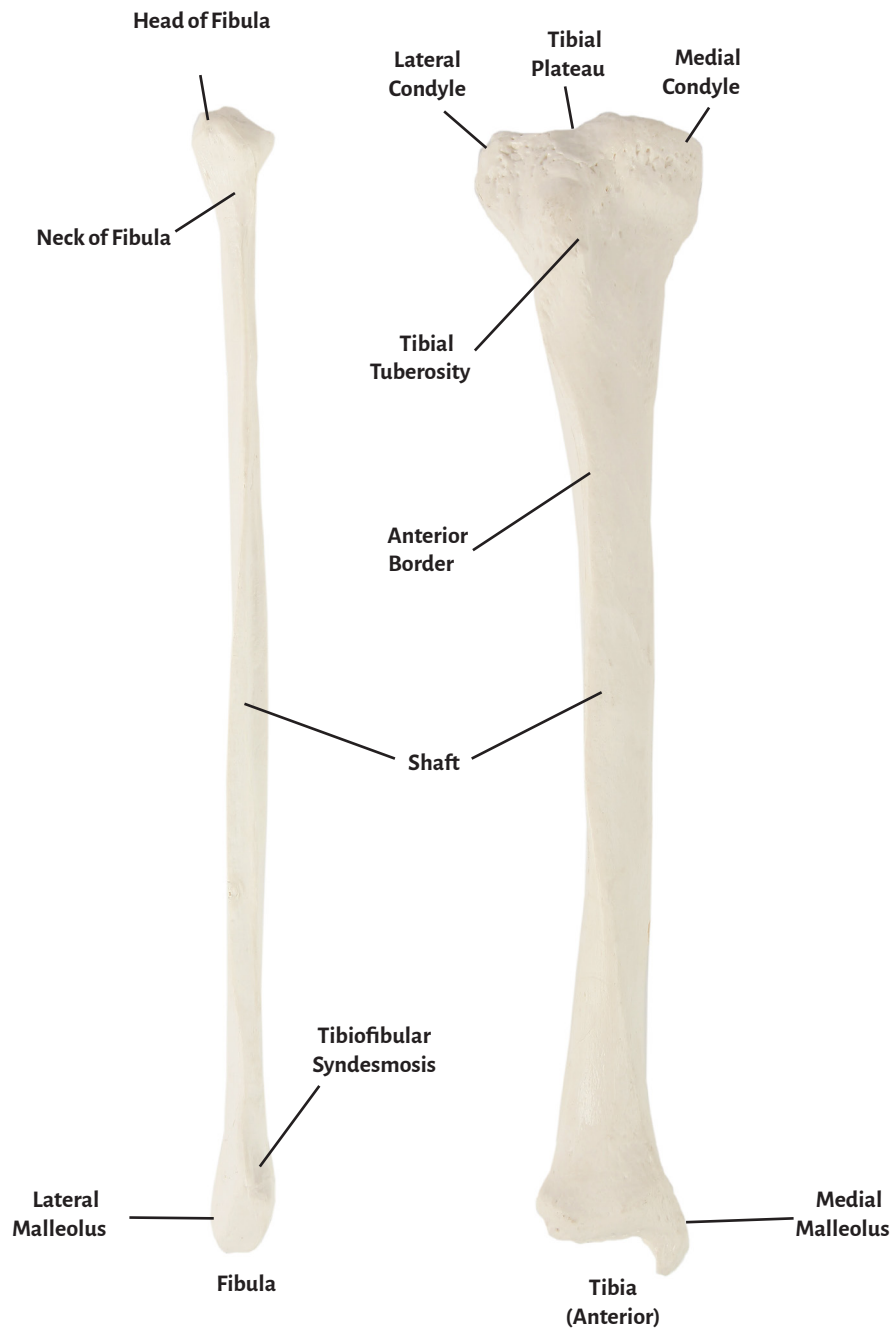


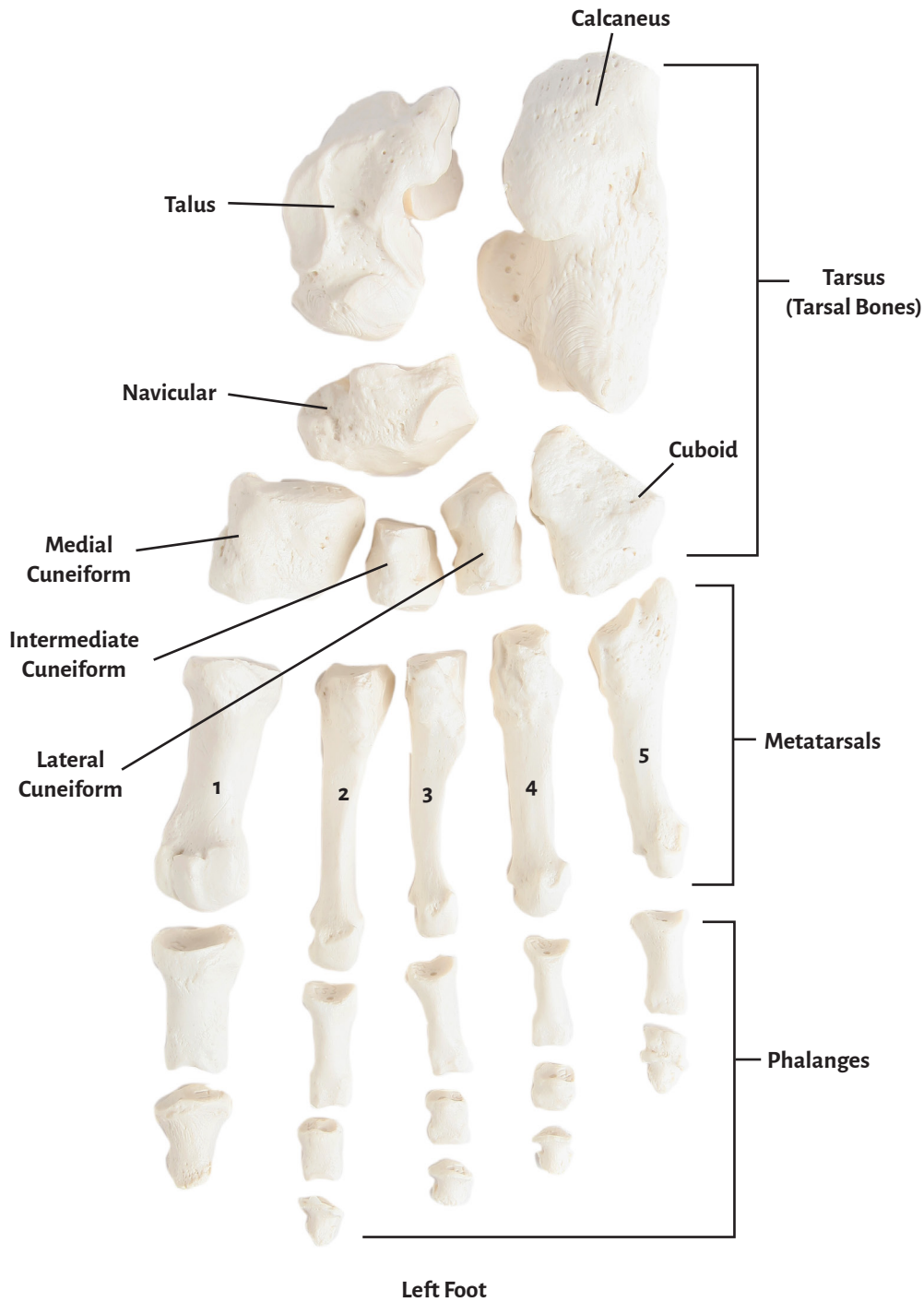
Left Hand (Palmar)



Left Femur (Anterior)

Left Femur (Posterior)





| Human Body (206)   |  |  |  |
|--|--|--|--|
| Axial Skeleton (80)  |  | Appendicular Skeleton (126)  |  |
| Skull (28)   | Torso (52)   | Lower Extremity (31 x 2 = 62)  | Upper Extremity (32 x 2 = 64)  |
| Paired Bones (12 x 2 = 24)   | Paired Bones (12 x 2 = 24)   |  |  |
| Nasal<br>Lacrimal<br>Inferior Nasal Concha<br>Maxillary<br>Zygomatic<br>Temporal<br>Palatine<br>Parietal<br>Malleus<br>Incus<br>Stapes | Hyoid<br>Sternum<br>C1 (atlas)<br>C2 (axis)<br>C3<br>C4<br>C5<br>C6<br>C7<br>T1<br>T2<br>T3<br>T4<br>T5<br>T6<br>T7<br>T8<br>T9<br>T10<br>T11<br>T12<br>L1<br>L2<br>L3<br>L4<br>L5<br>Sacrum<br>Coccyx | Scapula<br>Clavicle<br>Humerus<br>Radius<br>Ulna<br>Scaphoid<br>Lunate<br>Triquetrum<br>Pisiform<br>Hamate<br>Capitate<br>Trapezoid<br>Trapezium<br>Metacarpal 1<br>Proximal Phalange 1<br>Distal Phalange 1<br>Metacarpal 2<br>Proximal Phalange 2<br>Middle Phalange 2<br>Distal Phalange 2<br>Metacarpal 3<br>Proximal Phalange 3<br>Middle Phalange 3<br>Distal Phalange 3<br>Metacarpal 4<br>Proximal Phalange 4<br>Middle Phalange 4<br>Distal Phalange 4<br>Metacarpal 5<br>Proximal Phalange 5<br>Middle Phalange 5<br>Distal Phalange 5 | Hip (Ilium, Ischium, Pubis)<br>Femur<br>Patella<br>Tibia<br>Fibula<br>Talus<br>Calcaneus<br>Navicular<br>Medial Cuneiform<br>Middle Cuneiform<br>Lateral Cuneiform<br>Cuboid<br>Metatarsal 1<br>Proximal Phalange 1<br>Distal Phalange 1<br>Metatarsal 2<br>Proximal Phalange 2<br>Middle Phalange 2<br>Distal Phalange 2<br>Metatarsal 3<br>Proximal Phalange 3<br>Middle Phalange 3<br>Distal Phalange 3<br>Metatarsal 4<br>Proximal Phalange 4<br>Middle Phalange 4<br>Distal Phalange 4<br>Metatarsal 5<br>Proximal Phalange 5<br>Middle Phalange 5<br>Distal Phalange 5 |
| Frontal<br>Ethmoid<br>Vomer<br>Sphenoid<br>Mandible<br>Occipital   |  |  |  |
|  | Rib 1<br>Rib 2<br>Rib 3<br>Rib 4<br>Rib 5<br>Rib 6<br>Rib 7<br>Rib 8 (False)<br>Rib 9 (False)<br>Rib 10 (False)<br>Rib 11 (Floating)<br>Rib 12 (Floating)  |  |  |





© 2017 AXIS SCIENTIFIC