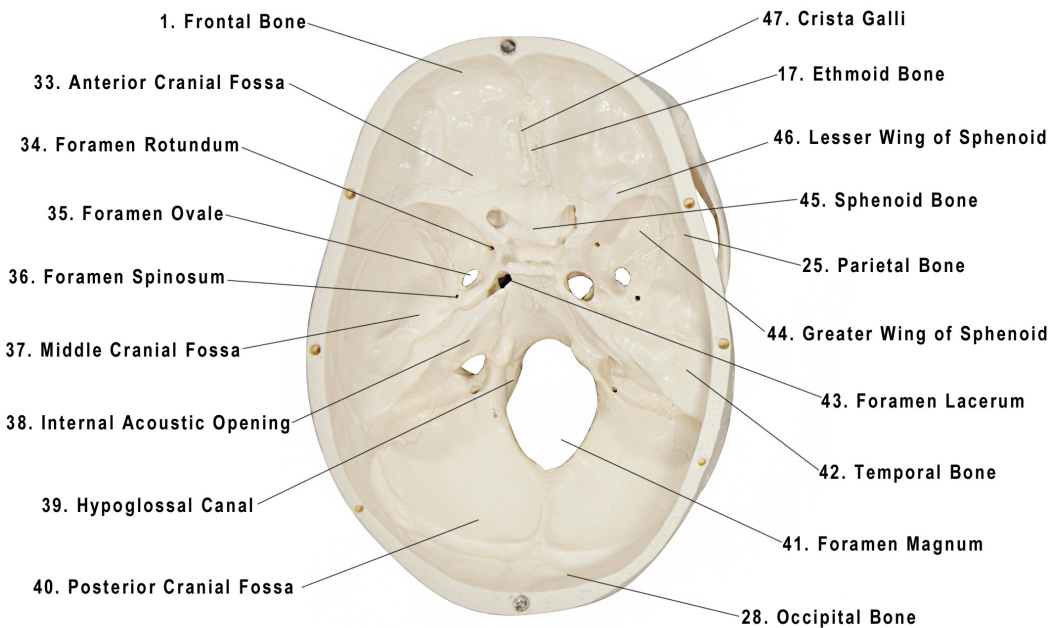
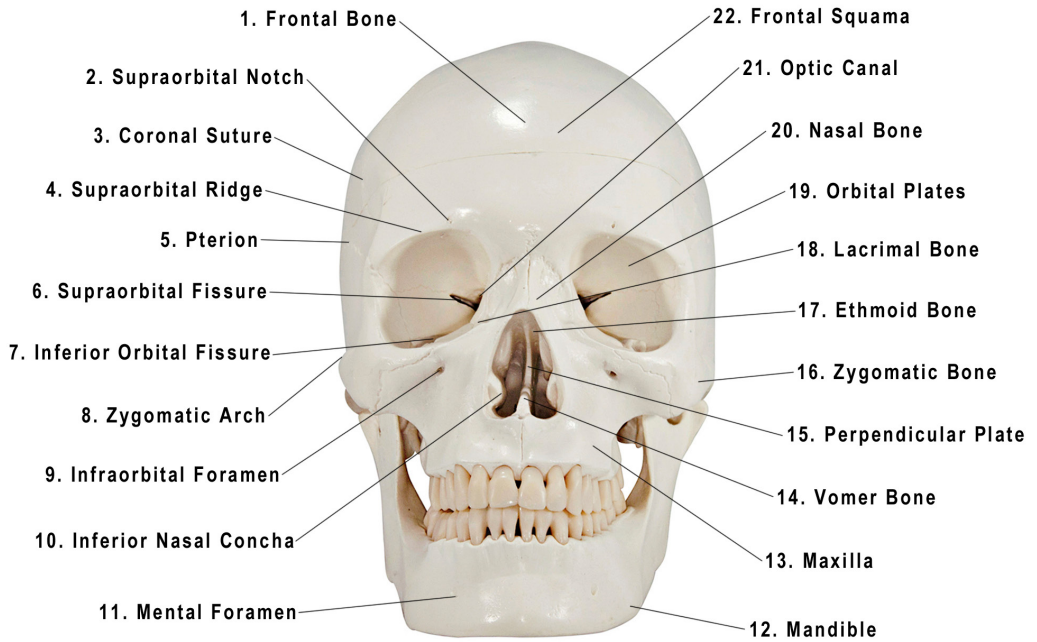
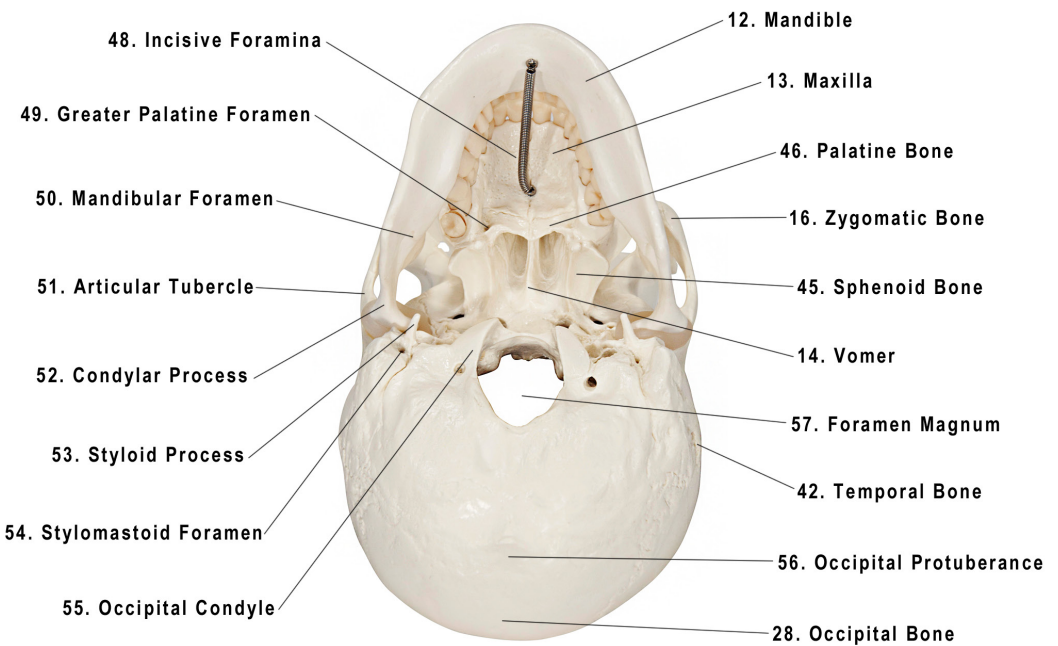
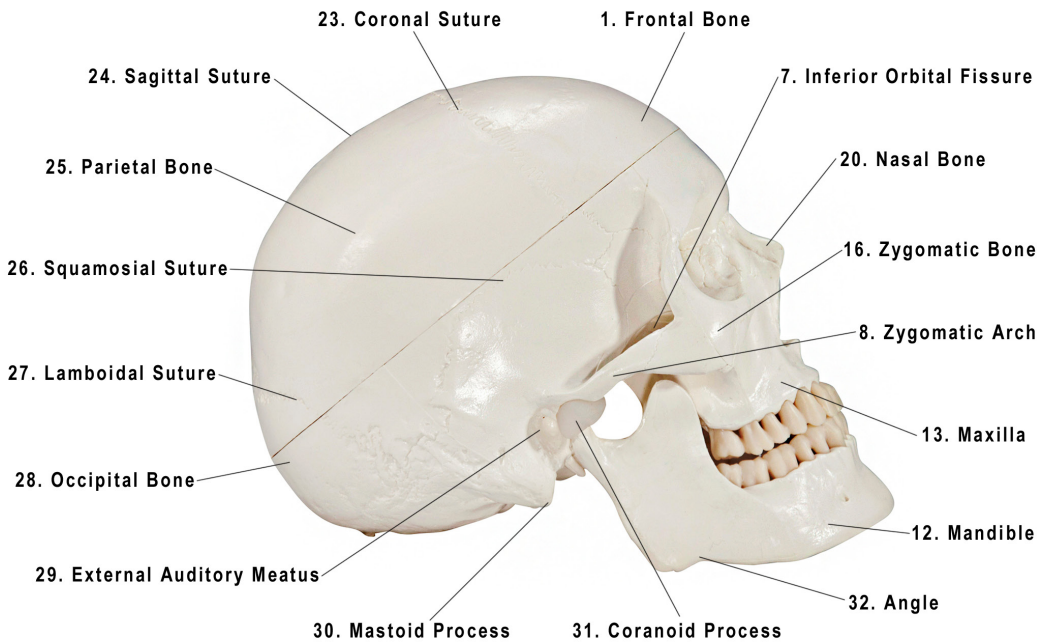
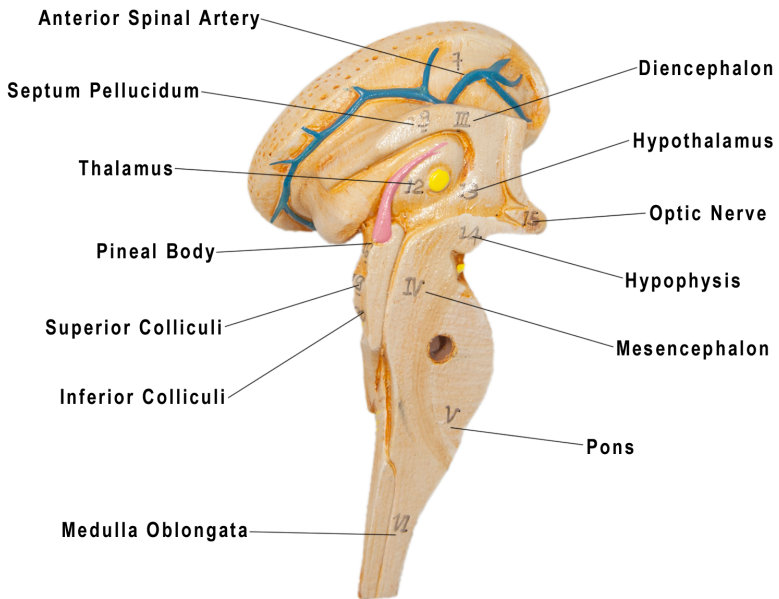
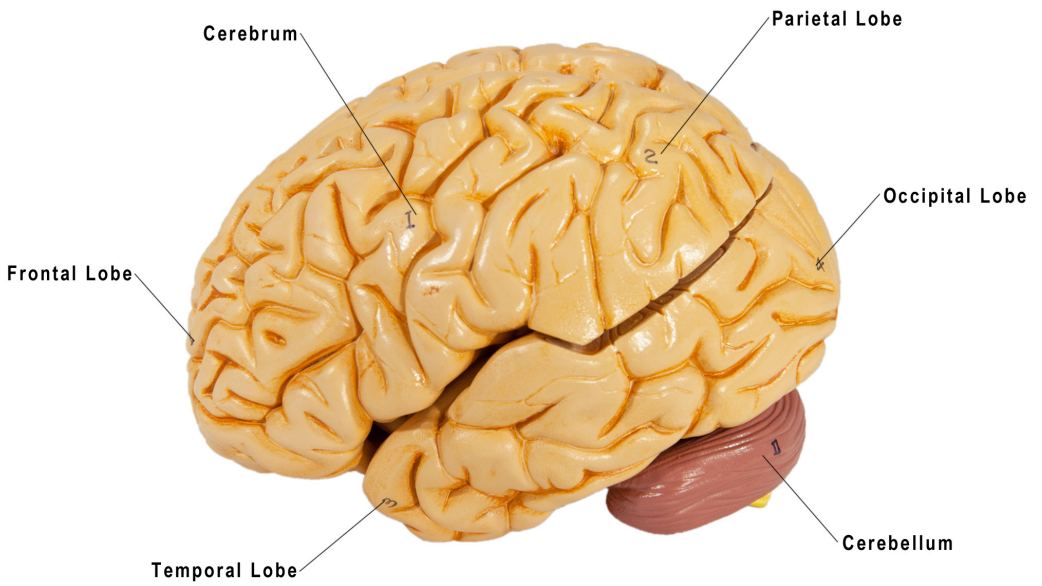


Axis Scientific 3-Part Life-Size Human Skull With 8-Part Brain

A-105178 & A-111583

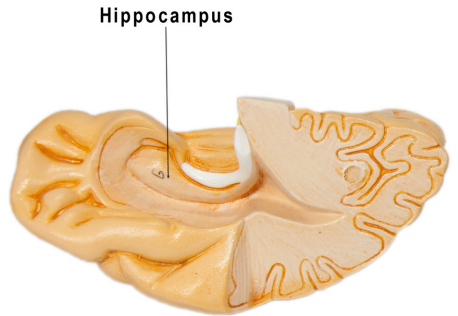




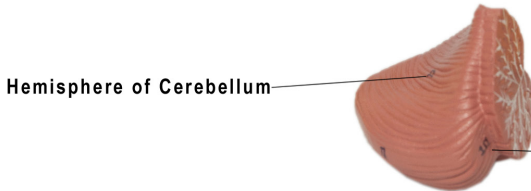




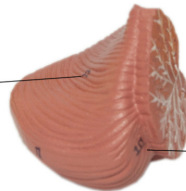
Corpus Callosum



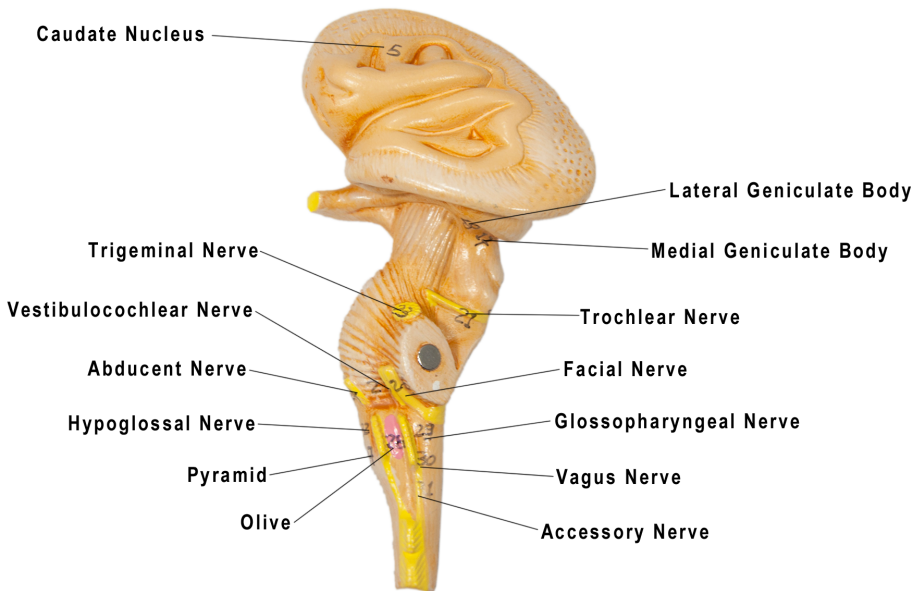
Hippocampus



Hemisphere of Cerebellum



Vermis of Cerebellum



Caudate Nucleus

Lateral Geniculate Body

Trigeminal Nerve

Medial Geniculate Body

Vestibulocochlear Nerve

Trochlear Nerve

Abducent Nerve

Facial Nerve

Hypoglossal Nerve

Glossopharyngeal Nerve

Pyramid

Vagus Nerve

Olive

Accessory Nerve

Skull

1. Frontal Bone
2. Supraorbital Notch
3. Coronal Suture
4. Supraorbital Ridge
5. Pterion
6. Supraorbital Fissure
7. Inferior Orbital Fissure
8. Zygomatic Arch
9. Infraorbital Foramen
10. Inferior Nasal Concha
11. Mental Foramen
12. Mandible
13. Maxilla
14. Vomer Bone
15. Perpendicular Plate
16. Zygomatic Bone
17. Ethmoid Bone
18. Lacrimal Bone
19. Orbital Plates
20. Nasal Bone
21. Optic Canal
22. Frontal Squama
23. Coronal Suture
24. Sagittal Suture
25. Parietal Bone
26. Squamosial Suture
27. Lamboidal Suture
28. Occipital Bone
29. External Auditory Meatus
30. Mastoid Process
31. Coronoid Process
32. Angle
33. Anterior Cranial Fossa
34. Foramen Rotundum
35. Foramen Ovale
36. Foramen Spinosum
37. Middle Cranial Fossa
38. Internal Acoustic Opening
39. Hypoglossal Canal
40. Posterior Cranial Fossa
41. Foramen Magnum
42. Temporal Bone
43. Foramen Lacerum
44. Greater Wing of Sphenoid
45. Sphenoid Bone
46. Lesser Wing of Sphenoid
47. Crista Galli
48. Incisive Foramina
49. Greater Palatine Foramen
50. Mandibular Foramen
51. Articular Tubercle
52. Condylar Process
53. Styloid Process
54. Stylomastoid Foramen
55. Occipital Condyle
56. Occipital Protuberance
57. Foramen Magnum

Brain

I. Cerebrum

1. Frontal Lobe
2. Parietal Lobe
3. Temporal Lobe
4. Occipital Lobe
5. Caudate Nucleus
6. Hippocampus
7. Anterior Spinal Artery
8. Corpus Callosum
9. Septum Pellucidum

II. Cerebellum

10. Vermis of Cerebellum
11. Hemisphere of Cerebellum

III. Diencephalon

12. Thalamus
13. Hypothalamus
14. Hypophysis
15. Optic Nerve
16. Pineal Body
17. Medial Geniculate Body
18. Lateral Geniculate Body

IV. Mesencephalon

19. Superior Colliculi
20. Inferior Colliculi
21. Trochlear Nerve
22. Oculomotor Nerve

V. Pons

23. Trigeminal Nerve
24. Abducent Nerve
25. Vestibulocochlear Nerve
26. Facial Nerve

VI. Medulla Oblongata

27. Pyramid
28. Olive
29. Glossopharyngeal Nerve
30. Vagus Nerve
31. Accessory Nerve
32. Hypoglossal Nerve

