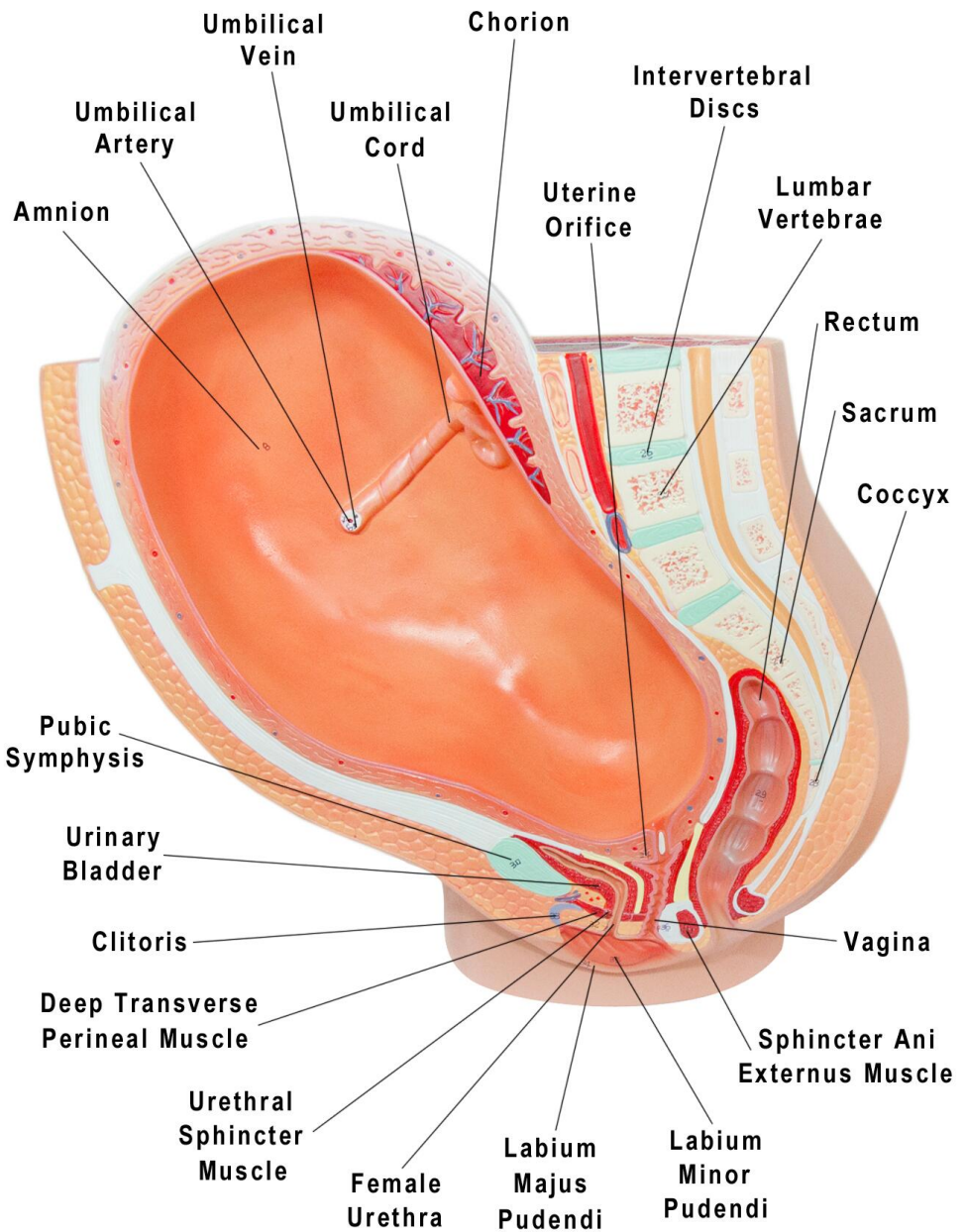
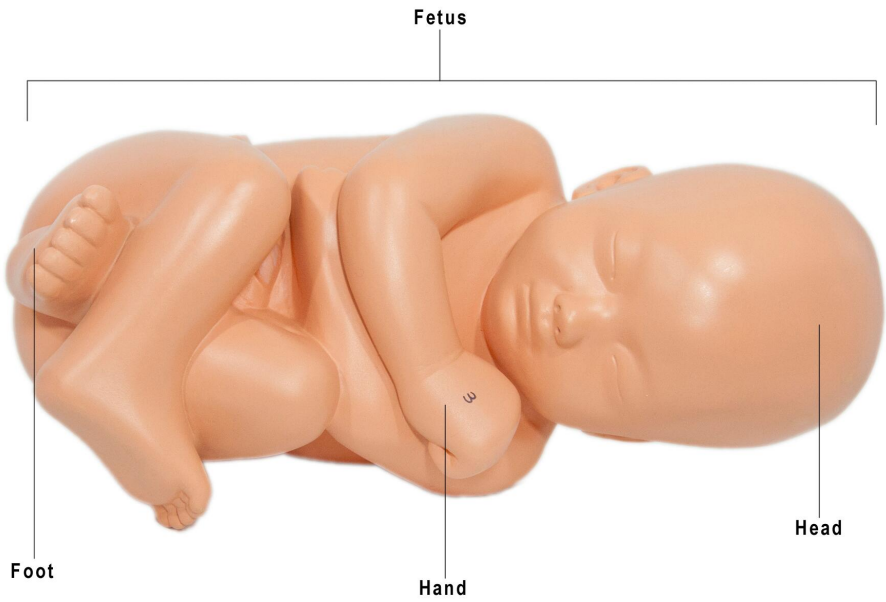
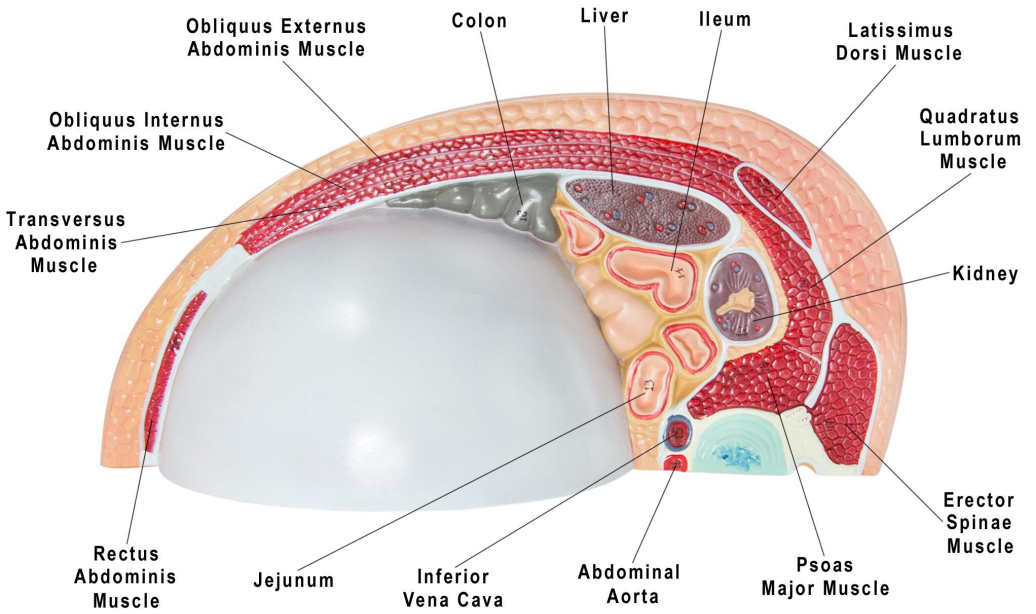

axisTM
SCIENTIFIC



Axis Scientific Pregnancy Pelvis with Mature Fetus

A-105189





-
1. Fetus
 2. Head
 3. Hand
 4. Foot
 5. Umbilical Cord
 6. Umbilical Artery
 7. Umbilical Vein
 8. Amnion
 9. Chorion
 10. Colon
 11. Liver
 12. Kidney
 13. Jejunum
 14. Ileum
 15. Inferior Vena Cava
 16. Abdominal Aorta
 17. Erector Spinae Muscle
 18. Psoas Major Muscle
 19. Quadratus Lumborum Muscle
 20. Transversus Abdominis Muscle
 21. Obliquus Internus Abdominis Muscle
 22. Obliquus Externus Abdominis Muscle
 23. Latissimus Dorsi Muscle
 24. Rectus Abdominis Muscle
 25. Lumbar Vertebrae
 26. Intervertebral Discs
 27. Sacrum
 28. Coccyx
 29. Rectum
 30. Pubic Symphysis
 31. Urinary Bladder
 32. Female Urethra
 33. Clitoris
 34. Labium Majus Pudendi
 35. Labium Minor Pudendi
 36. Vagina
 37. Uterine Orifice
 38. Urethral Sphincter Muscle
 39. Deep Transverse Perineal Muscle
 40. Sphincter Ani Externus Muscle