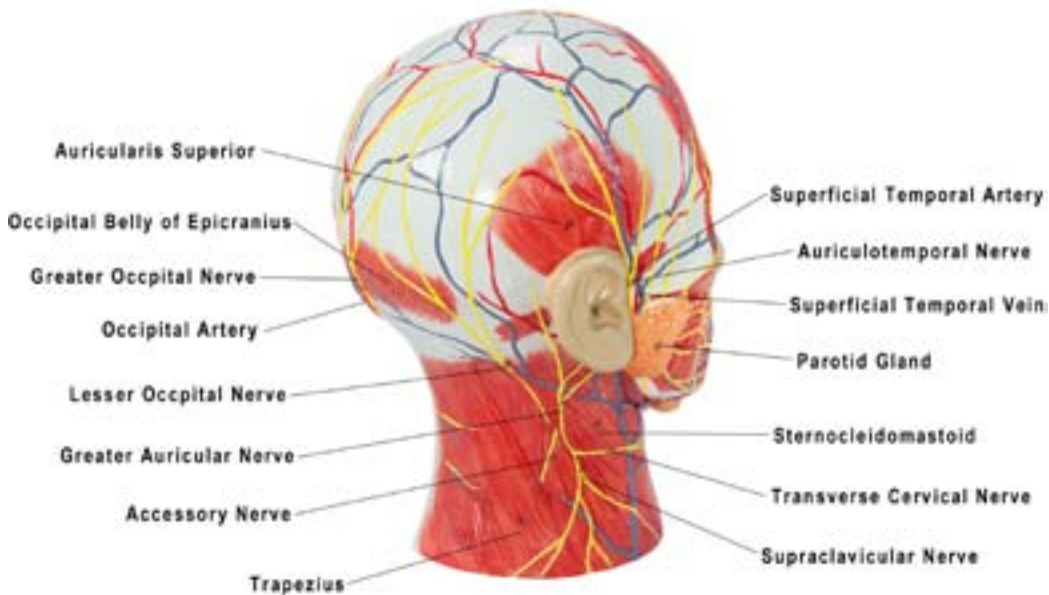
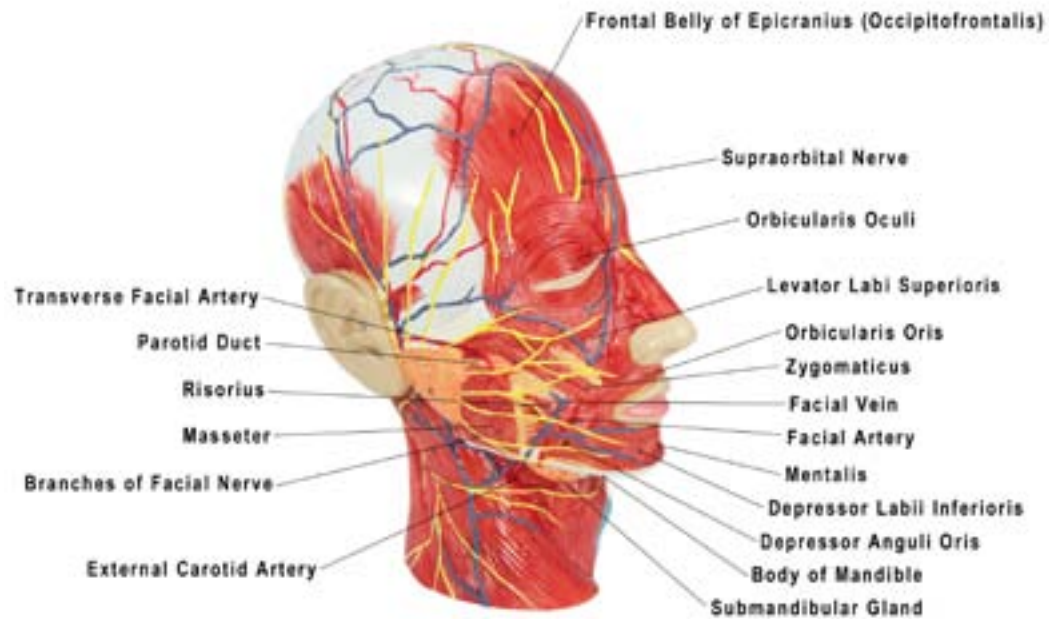
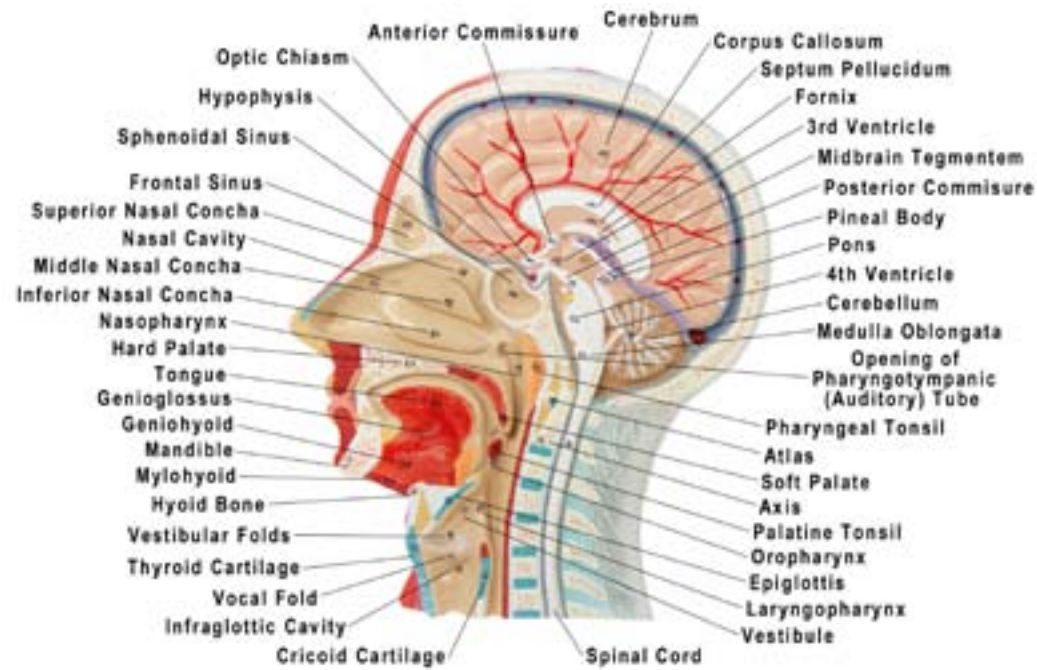




Axis Scientific Half Head

A-105192



1. Orbicularis Oculi Muscle
2. Frontal Belly of Epicranius (Occipitofrontalis) Muscle
3. Orbicularis Oris Muscle
4. Levator Labii Superioris Muscle
5. Zygomaticus Muscle
6. Risorius Muscle
7. Depressor Anguli Oris Muscle
8. Depressor Labii Inferioris Muscle
9. Mentalis Muscle
10. Facial Artery
11. Facial Vein
12. Transverse Facial Artery
13. Superficial Temporal Artery
14. Superficial Temporal Vein
15. Auriculotemporal Nerve
16. Parotid Gland
17. Parotid Duct
18. Branches of Facial Nerve
19. Masseter Muscle
20. Supraorbital Nerve
21. Auricularis Superior Muscle
22. Occipital Belly of Epicranius Muscle
23. Occipital Artery
24. Greater Occipital Nerve
25. Sternocleidomastoid Muscle
26. External Jugular Vein
27. External Carotid Artery
28. Lesser Occipital Nerve
29. Great Auricular Nerve
30. Transverse Cervical Nerve
31. Supraclavicular Nerve
32. Trapezius Muscle
33. Accessory Nerve
34. Body of Mandible

35. Submandibular Gland
36. Superior Sagittal Sinus
37. Frontal Sinus
38. Sphenoidal Sinus
39. Cerebrum
40. Corpus Callosum
41. Septum Pellucidum
42. Fornix
43. Anterior Commissure
44. Optic Chiasm
45. Hypophysis
46. Pineal Body
47. Posterior Commissure
48. Cerebellum
49. 3rd Ventricle
50. 4th Ventricle
51. Midbrain Tegmentum
52. Pons
53. Medulla Oblongata
54. Spinal Cord
55. Atlas
56. Axis
57. Nasal Cavity
58. Superior Nasal Concha
59. Middle Nasal Concha
60. Inferior Nasal Concha
61. Opening of Pharyngotympanic (Auditory) Tube
62. Pharyngeal Tonsil
63. Hard Palate
64. Soft Palate
65. Palatine Tonsil
66. Tongue
67. Genioglossus Muscle
68. Geniohyoid Muscle
69. Mylohyoid Muscle
70. Hyoid Bone
71. Mandible
72. Epiglottis
73. Thyroid Cartilage
74. Cricoid Cartilage
75. Vestibule
76. Vestibular Folds
77. Vocal Fold
78. Infraglottic Cavity
79. Nasopharynx
80. Oropharynx
81. Laryngopharynx