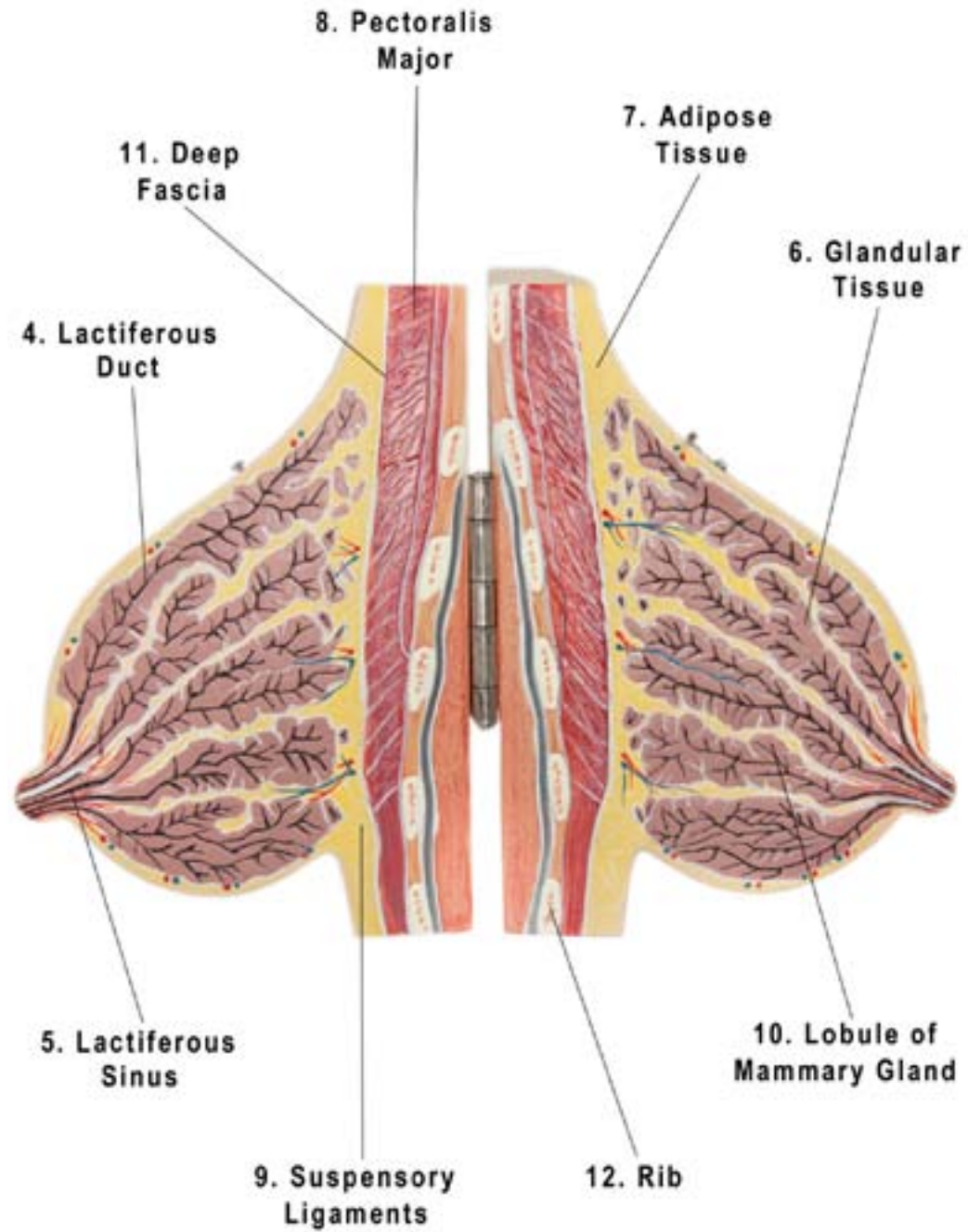




Axis Scientific Breast in Lactation Period

A-105193



-
1. Breast or Mammary Gland
 2. Nipple
 3. Areola Mammae
 4. Lactiferous Duct
 5. Lactiferous Sinus
 6. Glandular Tissue
 7. Adipose Tissue
 8. Pectoralis Major
 9. Suspensory Ligaments
 10. Lobule of Mammary Gland
 11. Deep Fascia
 12. Rib