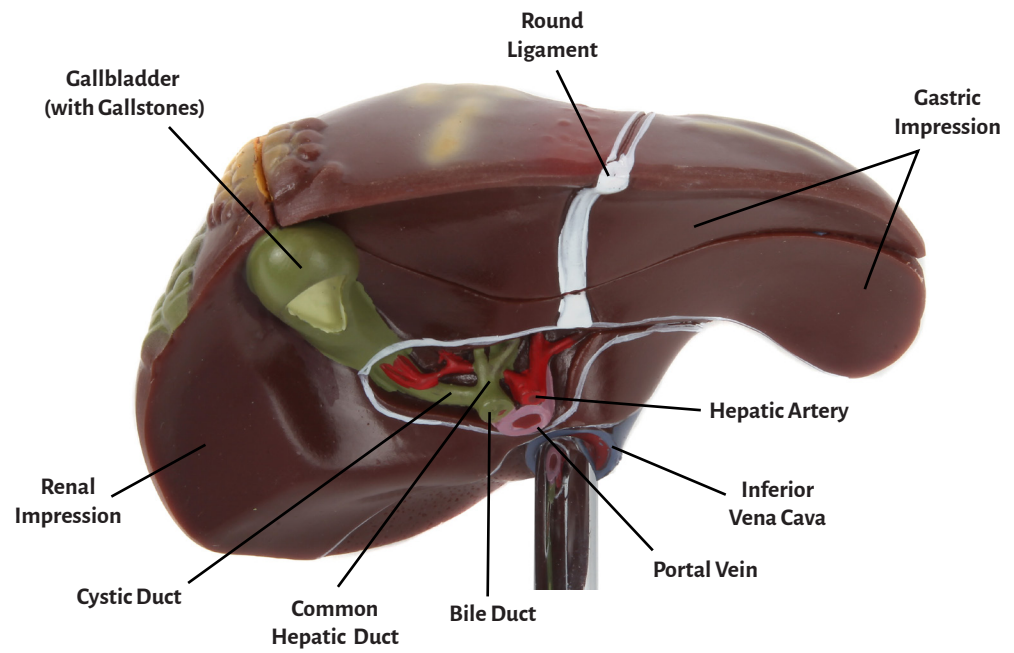
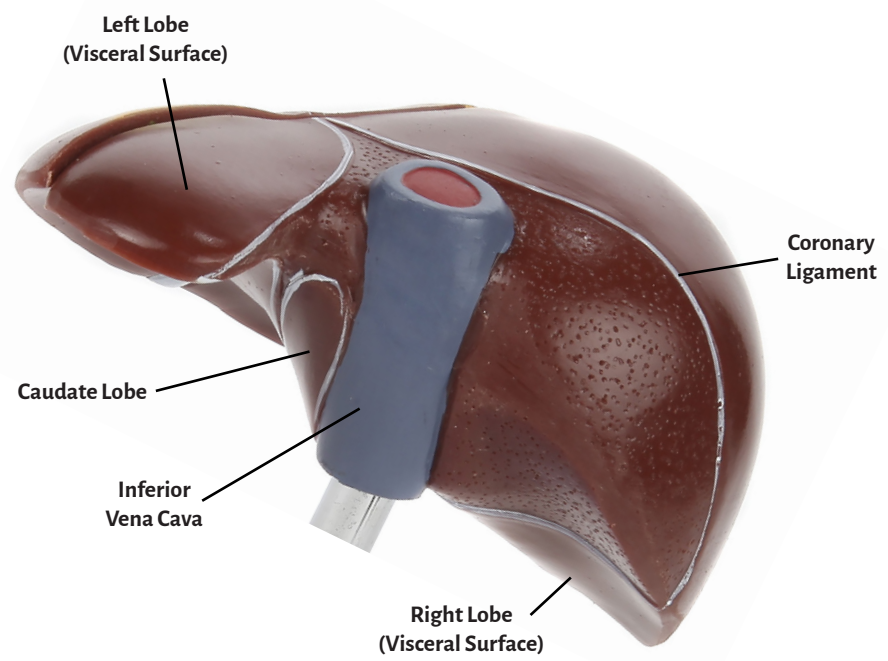
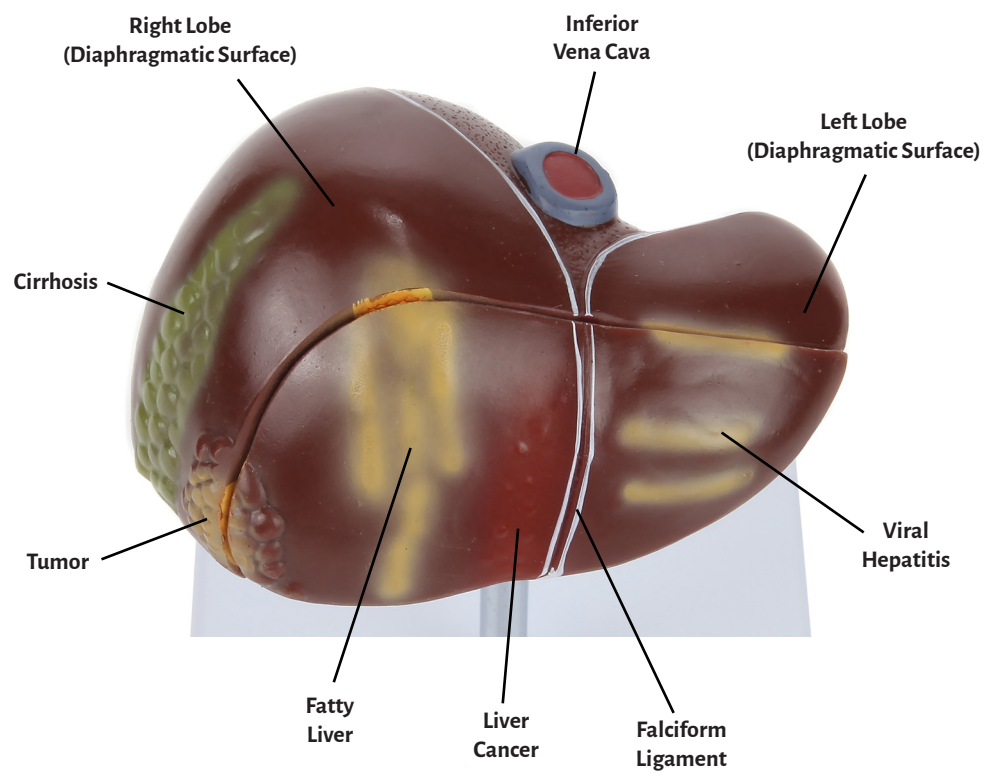
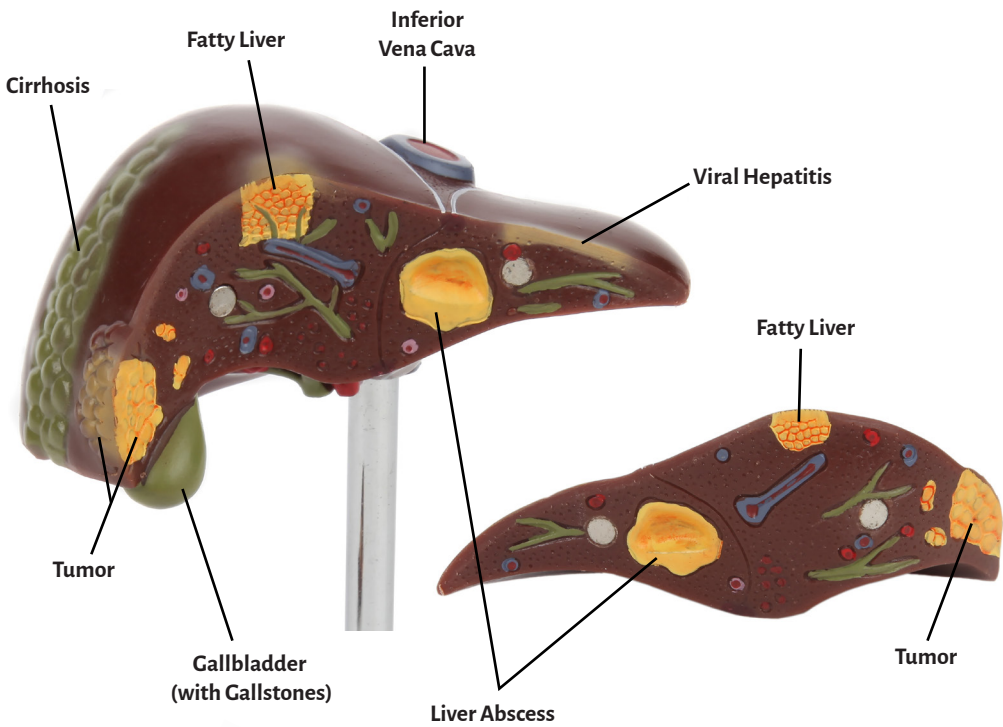




**Axis Scientific Diseases of the Liver**

**A-105859**





**Bile Duct**

**Liver Abscess**

**Caudate Lobe**

**Liver Cancer**

**Cirrhosis**

**Left Lobe  
(Diaphragmatic Surface)**

**Common Hepatic Duct**

**Left Lobe  
(Visceral Surface)**

**Coronary Ligament**

**Portal Vein**

**Cystic Duct**

**Right Lobe  
(Diaphragmatic Surface)**

**Falciform Ligament**

**Right Lobe  
(Visceral Surface)**

**Fatty Liver**

**Gallbladder  
(with Gallstones)**

**Round Ligament**

**Gastric Impression**

**Renal Impression**

**Hepatic Artery**

**Tumor**

**Inferior Vena Cava**

**Viral Hepatitis**

