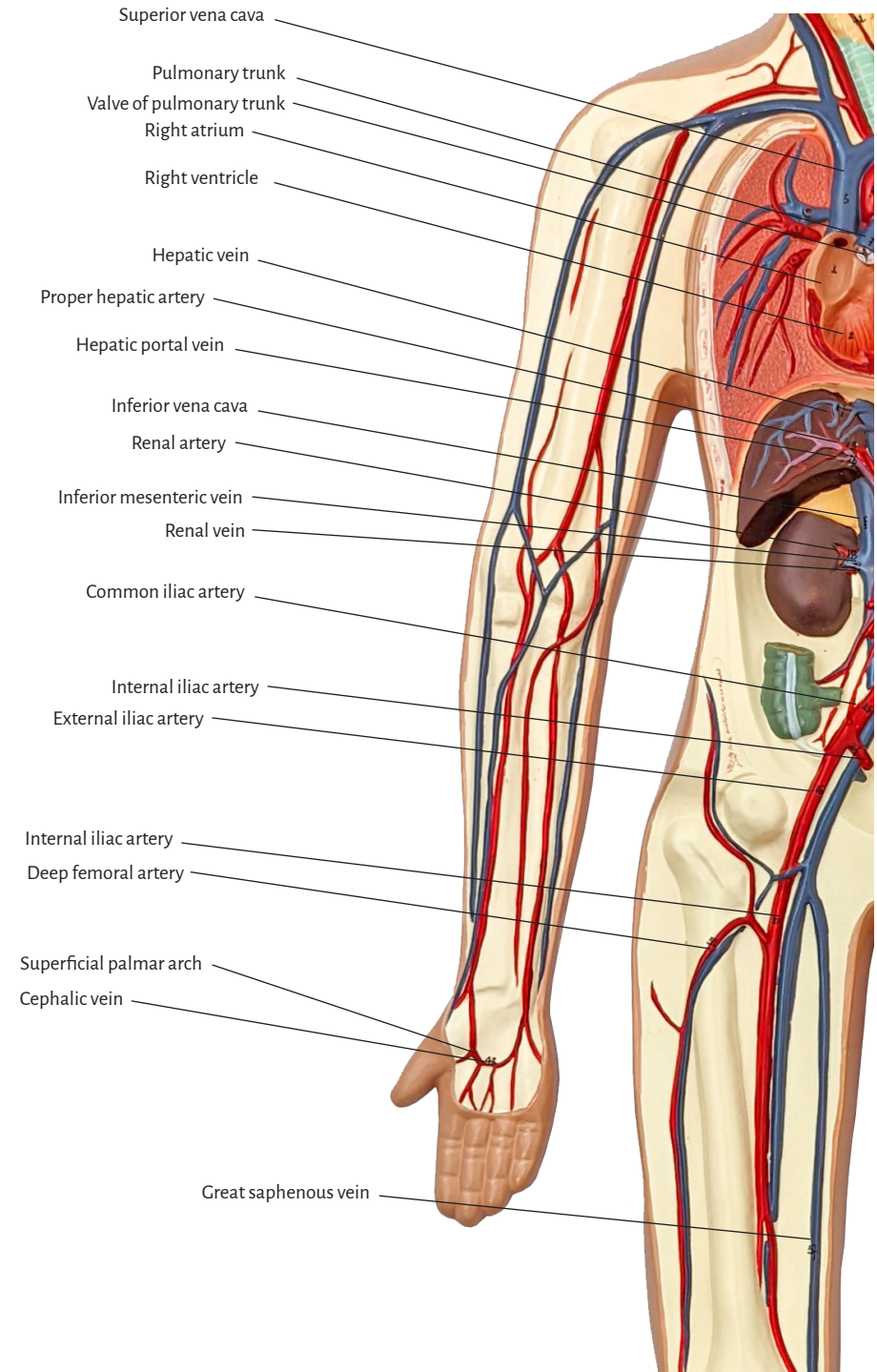
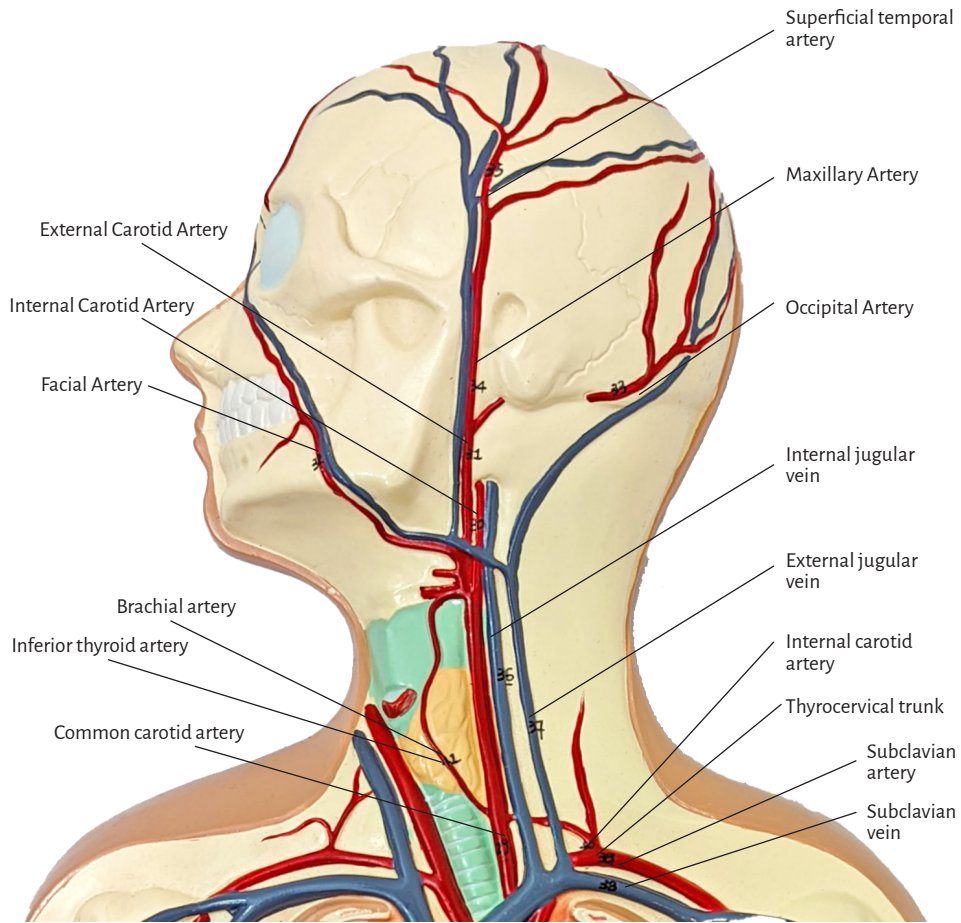
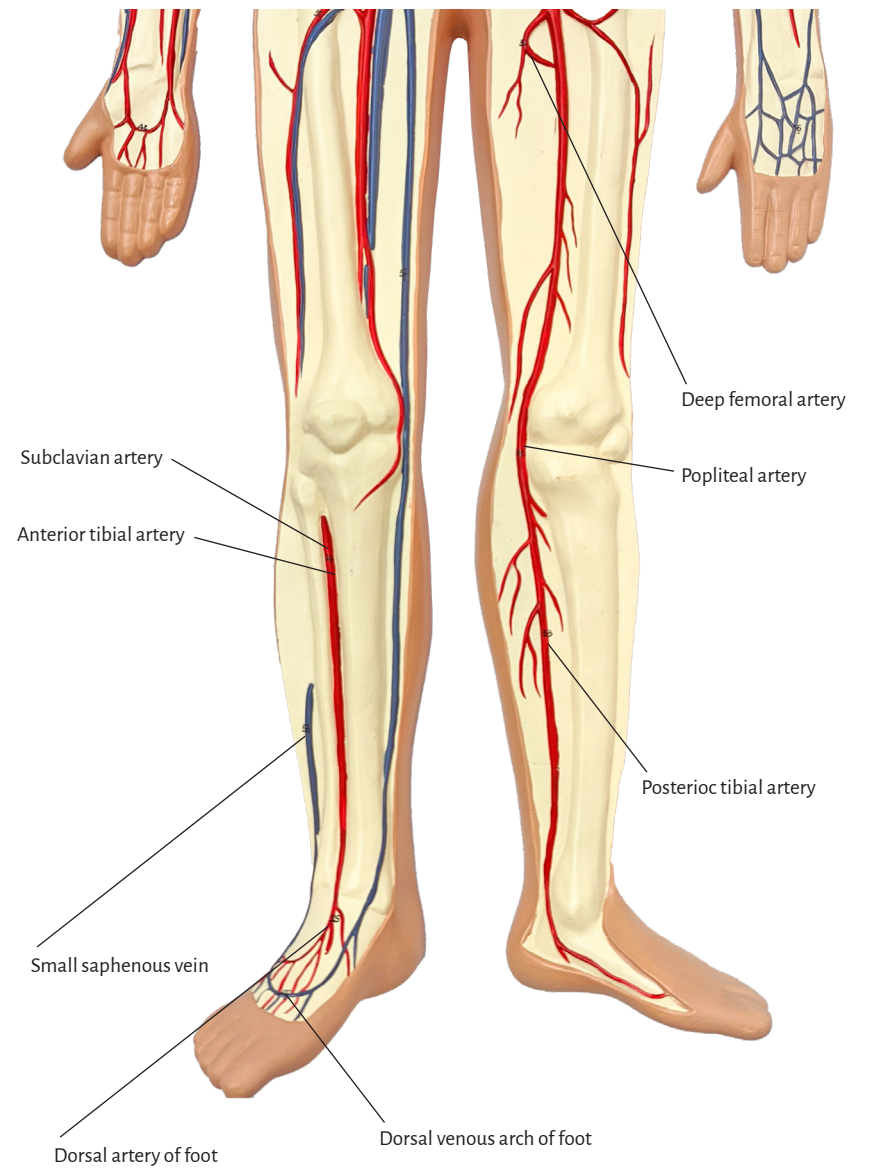
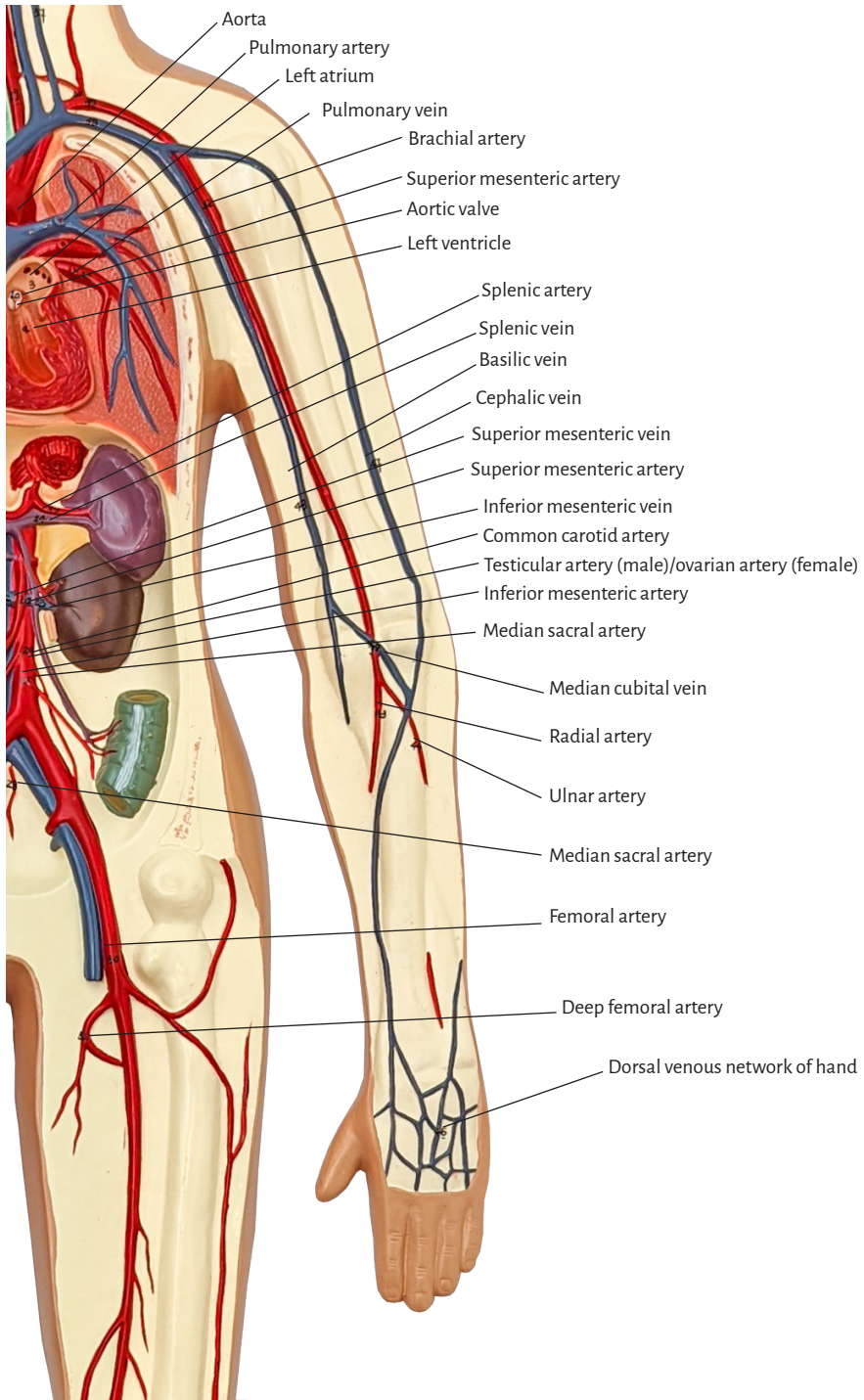


Axis Scientific Human Circulatory System 1/2 Life Size

A-105864





A. Thoracic viscera

Right atrium
Right ventricle
Left atrium
Left ventricle
Superior vena cava
Inferior vena cava
Pulmonary trunk
Valve of pulmonary trunk
Aorta
Aortic valve
Pulmonary artery
Pulmonary vein

B. Abdominal viscera

Splenic artery
Splenic vein
Proper hepatic artery
Hepatic portal vein
Hepatic vein
Renal artery
Renal vein
Superior mesenteric artery
Inferior mesenteric artery
Superior mesenteric vein
Inferior mesenteric vein
Testicular artery (male)/
ovarian artery (female)
Common iliac artery
External iliac artery
Internal iliac artery
Median sacral artery

C. Head and neck

Common carotid artery
Internal carotid artery
External carotid artery
Facial artery
Occipital artery
Maxillary artery
Superficial temporal artery
Internal jugular vein
External jugular vein
Subclavian vein
Subclavian artery
Thyrocervical trunk
Inferior thyroid artery

D. Upper limb

Brachial artery
Radial artery
Ulnar artery
Superficial palmar arch
Dorsal venous network of hand
Cephalic vein
Basilic vein
Median cubital vein

E. Lower limb

Femoral artery
Deep femoral artery
Popliteal artery
Posterior tibial artery
Anterior tibial artery
Dorsal artery of foot
Dorsal venous arch of foot
Great saphenous vein
Small saphenous vein