



Axis Scientific Dual Sex Muscled Human Torso Model

A-105937

Region of Head

A. Cranial Cavity

1. Cerebral hemisphere
2. Anterior cerebral artery
3. Posterior cerebral artery
4. Internal carotid artery
5. Cerebral crus
6. Pons
7. Medulla oblongata
8. Cerebellum
9. Falx cerebri
10. Superior sagittal sinus
11. Inferior sagittal sinus
12. Straight sinus
13. Corpus callosum
14. Fornix
15. Thalamus

B. Orbit

1. Eyeball
2. Lacrimal gland
3. Lacrimal sac
4. Levator palpebrae superioris muscle
5. Superior oblique muscle
6. Medial rectus muscle
7. Inferior rectus muscle
8. Inferior oblique muscle
9. Lateral rectus muscle

C. Nasal Cavity

1. Superior nasal concha
2. Middle nasal concha
3. Inferior nasal concha
4. Nasal vestibule

D. Oral Cavity

1. Palate
2. Tongue
3. Pharynx
4. Parotid gland
5. Sublingual gland
6. Submandibular gland

E. Muscles of the Head

1. Frontal belly of occipitofrontalis
2. Galea aponeurotica
3. Occipital belly of occipitofrontalis
4. Temporalis
5. Auricularis posterior
6. Procerus
7. Nasalis
8. Zygomaticus major
9. Zygomaticus minor
10. Orbicularis oris
11. Risorius
12. Masseter
13. Buccinator
14. Depressor labii inferioris
15. Depressor anguli oris
16. Mentalis
17. Platysma
18. Orbicularis oculi

Region of the Neck

1. Hyoid bone
2. Thyrohyoid membrane
3. Thyroid cartilage
4. Cricoid cartilage
5. Thyroid gland
6. Trachea
7. Common carotid artery
8. Internal jugular vein

Region of the Thoracic Cavity

A. Left Lung

1. Superior lobe of left lung
2. Inferior lobe of left lung

B. Right Lung

1. Superior lobe of right lung
2. Middle lobe of right lung
3. Inferior lobe of right lung
4. Right pulmonary artery
5. Right superior pulmonary vein
6. Right inferior pulmonary vein

C. Heart

1. Right atrium
2. Right auricle
3. Superior vena cava
4. Inferior vena cava
5. Fossa ovalis
6. Opening of coronary sinus
7. Right ventricle
8. Pulmonary trunk
9. Pulmonary valve
10. Tricuspid valve
11. Left atrium
12. Left auricle
13. Pulmonary vein
14. Left ventricle
15. Mitral valve
16. Aortic valve
17. Ascending aorta
18. Right coronary artery
19. Anterior interventricular branch of left coronary artery
20. Circumflex branch of left coronary artery
21. Great cardiac vein
22. Middle cardiac vein
23. Small cardiac vein
24. Coronary sinus

D. Esophagus

E. Thoracic Aorta

F. Left Main Bronchus

G. Right Main Bronchus

H. Thoracic Duct

I. Azygos Vein

J. Hemiazygos Vein

K. Sympathetic Trunk and Ganglia

L. Gray and White Rami Communicantes

M. Greater Splanchnic Nerve

N. Intercostal Nerves and Vessels

O. Mammary Gland

P. Areola of Breast

Q. Lactiferous Duct

Region of Abdominal Cavity

A. Liver

1. Left lobe of liver
2. Right lobe of liver
3. Inferior vena cava
4. Gallbladder
5. Common bile duct
6. Hepatic artery proper
7. Hepatic portal vein
8. Quadrate lobe
9. Caudate lobe
10. Round ligament of liver

B. Stomach

1. Cardia
2. Pylorus
3. Lesser curvature of stomach
4. Greater curvature of stomach
5. Fundus of stomach
6. Body of stomach
7. Pyloric part of stomach
8. Gastric folds
9. Angular incisure
10. Pyloric sphincter muscle

C. Intestine

1. Duodenum
2. Jejunum
3. Ileum
4. Cecum
5. Appendix
6. Ascending colon
7. Transverse colon
8. Descending colon
9. Sigmoid colon
10. Rectum

D. Pancreas

1. Head of pancreas
2. Body of pancreas
3. Tail of pancreas
4. Pancreatic duct
5. Accessory pancreatic duct

E. Spleen

F. Posterior Abdominal Cavity

1. Left kidney
2. Right kidney
3. Suprarenal gland
4. Renal cortex
5. Renal pyramid
6. Minor renal calices
7. Major renal calices
8. Renal pelvis
9. Ureter
10. Inferior vena cava
11. Abdominal aorta
12. Sacral plexus

Region of Pelvic Cavity (Female)

1. Uterus
2. Vagina
3. Uterine tube
4. Ovary
5. Urinary bladder
6. Urethra
7. Lesser lips of pudendum
8. Greater lips of pudendum
9. Bulb of vestibule
10. Greater vestibular gland
11. Clitoris
12. Vagina vestibule
13. Mons pubis
14. Decidua parietalis
15. Decidua capsularis
16. Decidua basalis
17. Placenta
18. Umbilical cord
19. Fetus

Region of Pelvic Cavity (Male)

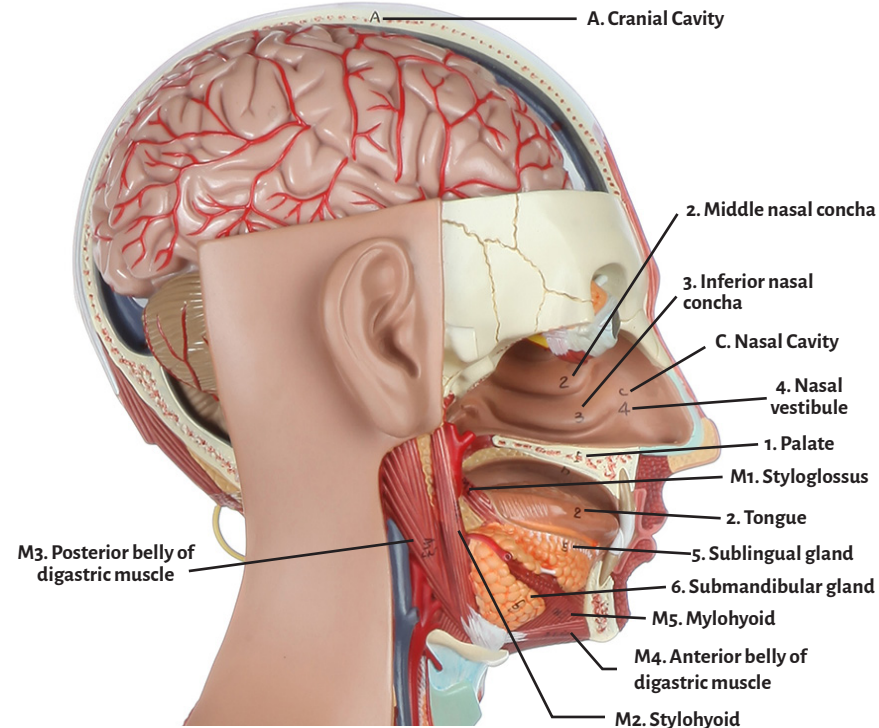
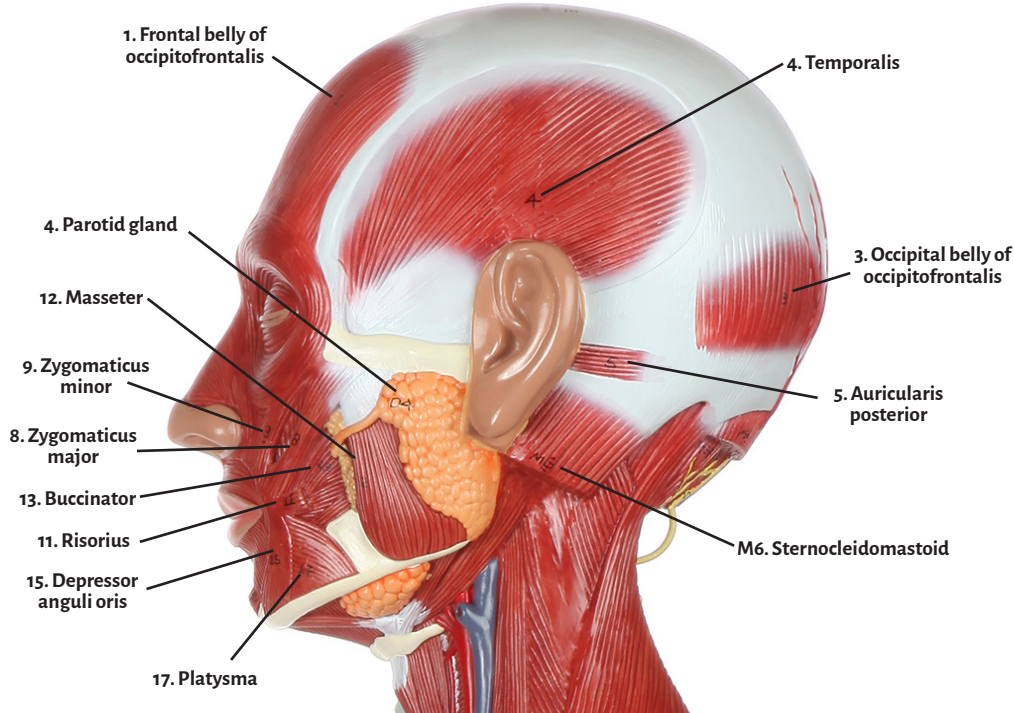
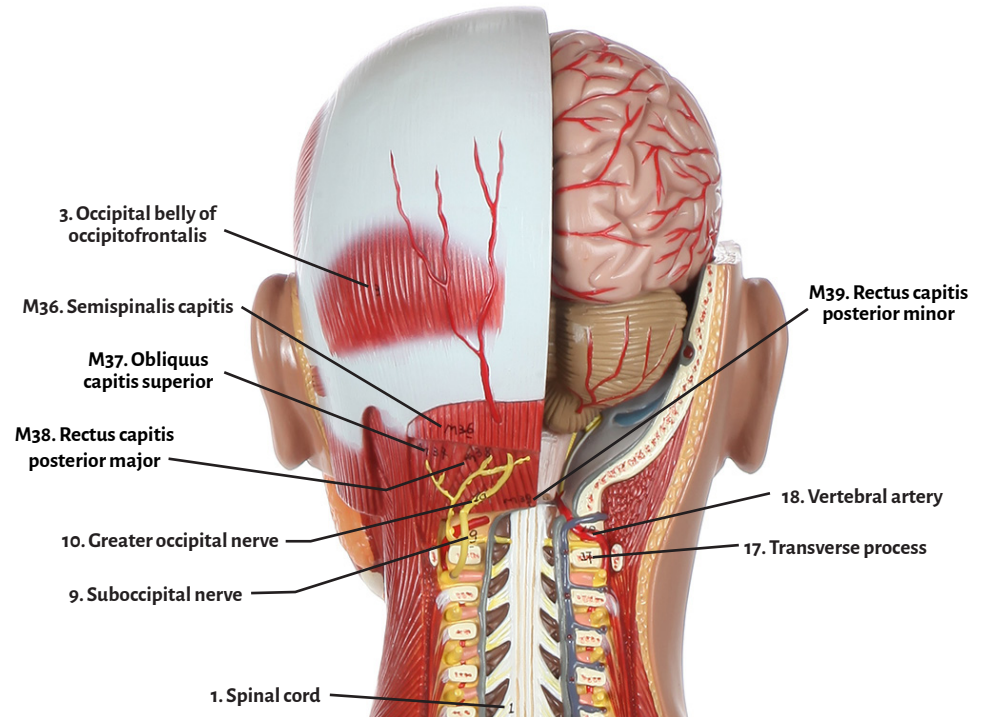
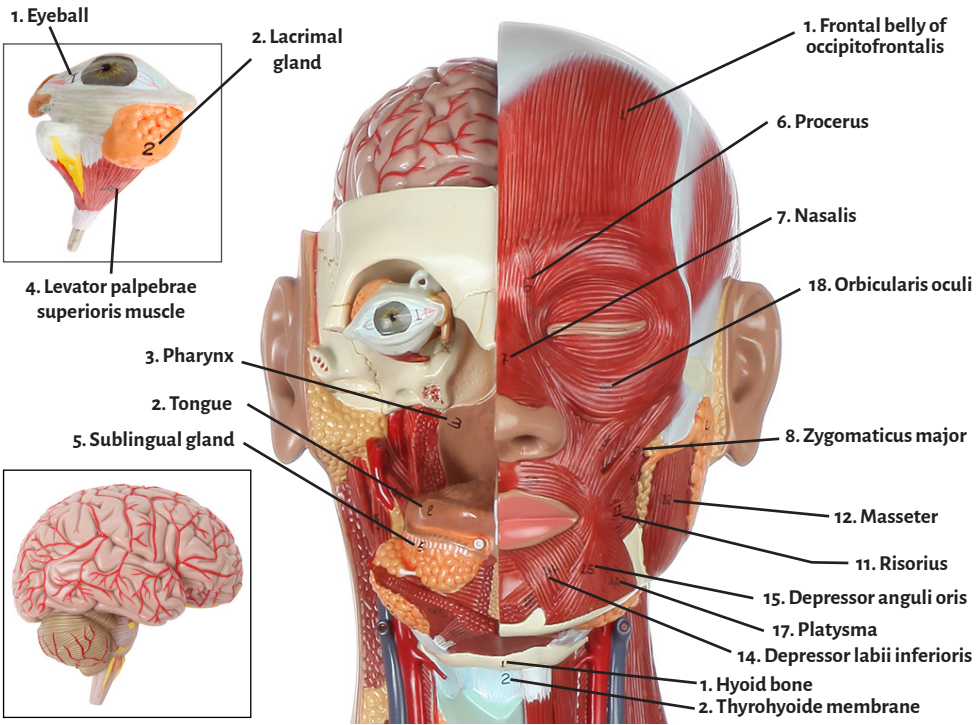
1. Testis
2. Epididymis
3. Ductus deferens
4. Seminal vesicle
5. Prostate
6. Bulbourethral gland
7. Penis
8. Scrotum
9. Cavernous body of penis
10. Cavernous body of urethra
11. Urinary bladder
12. Male urethra

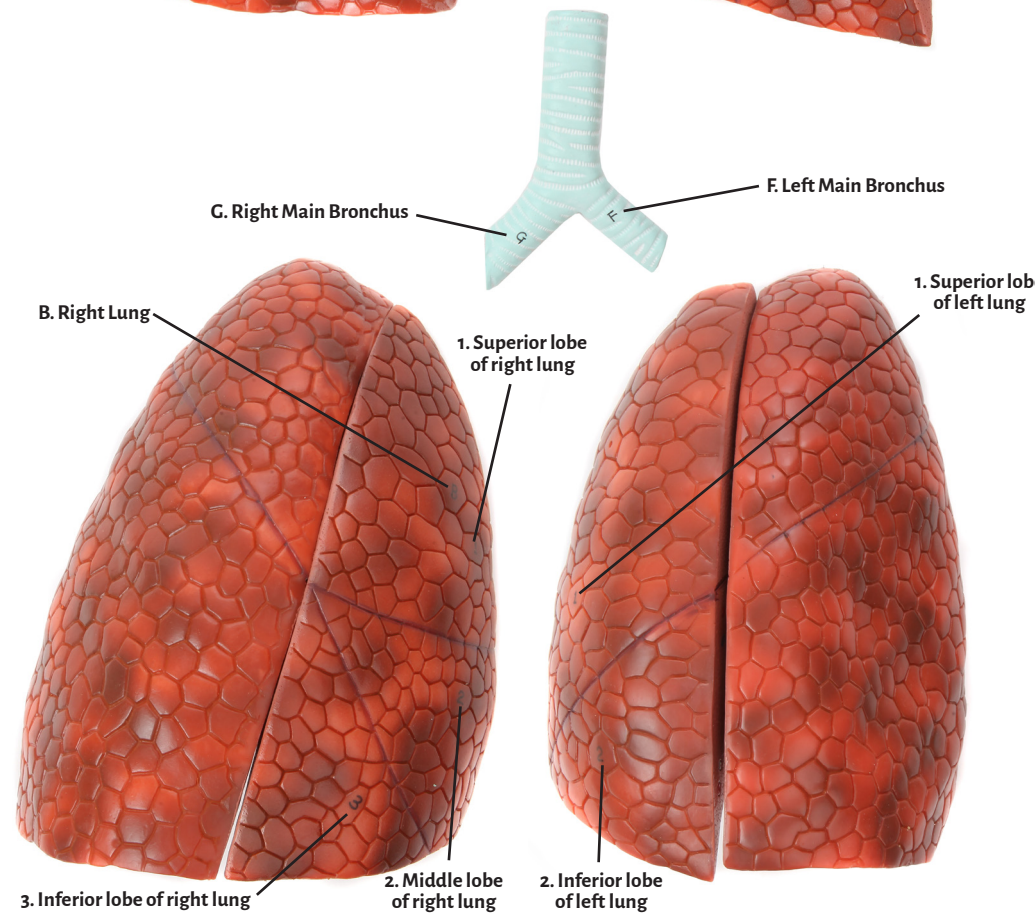
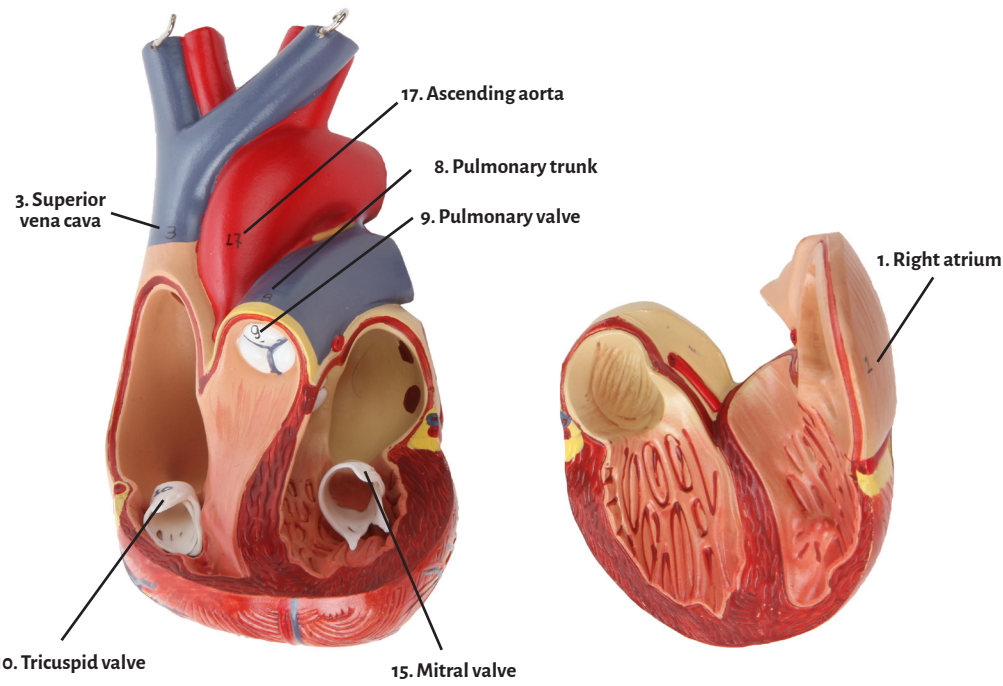
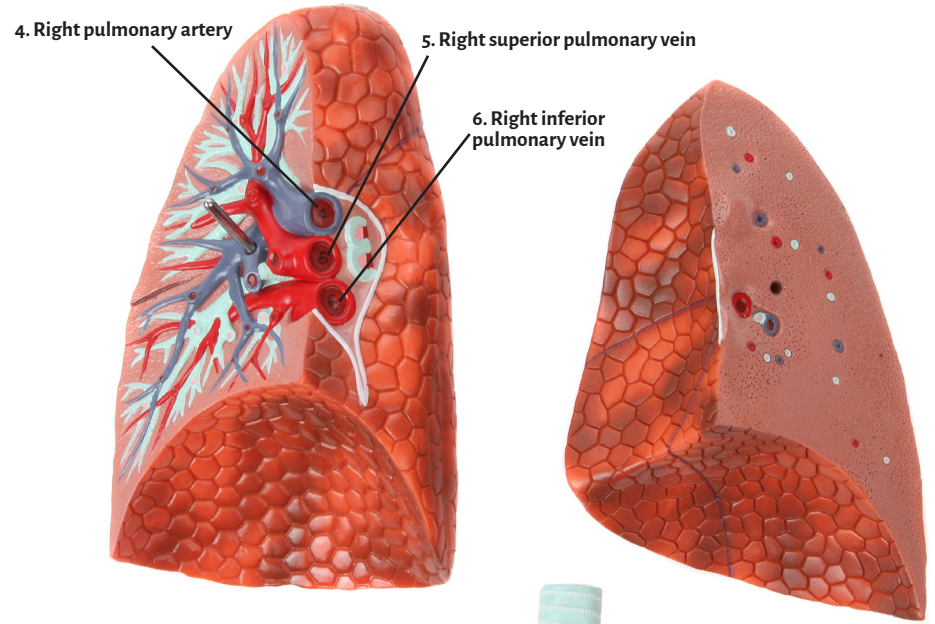
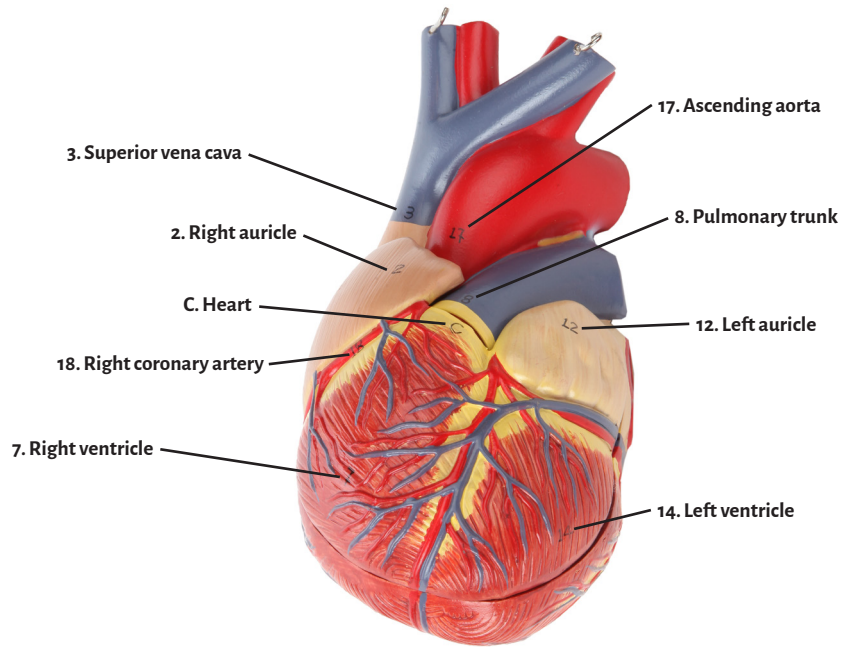
Region of Back and Spinal Cord

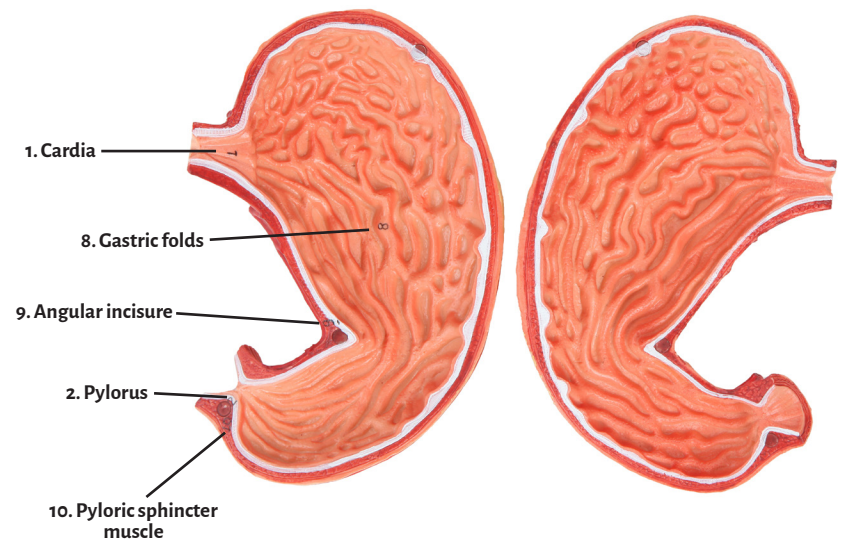
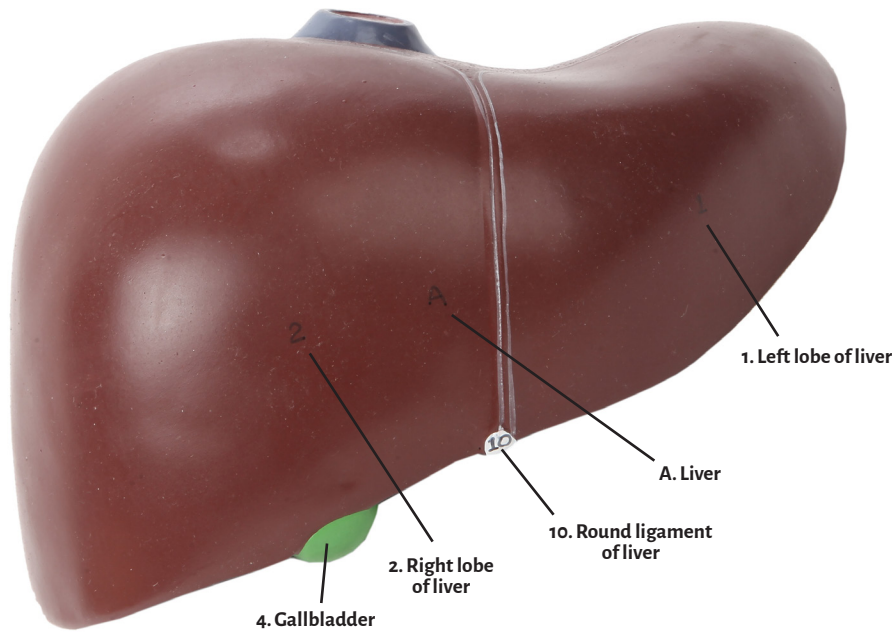
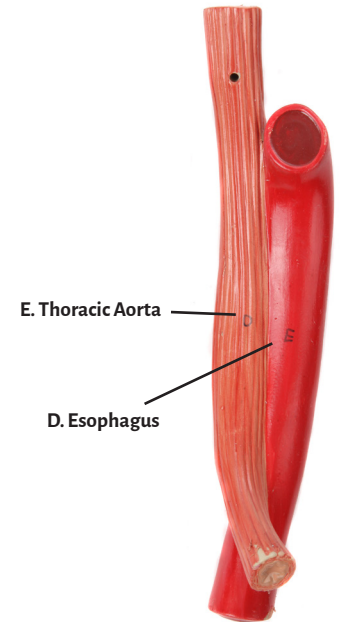
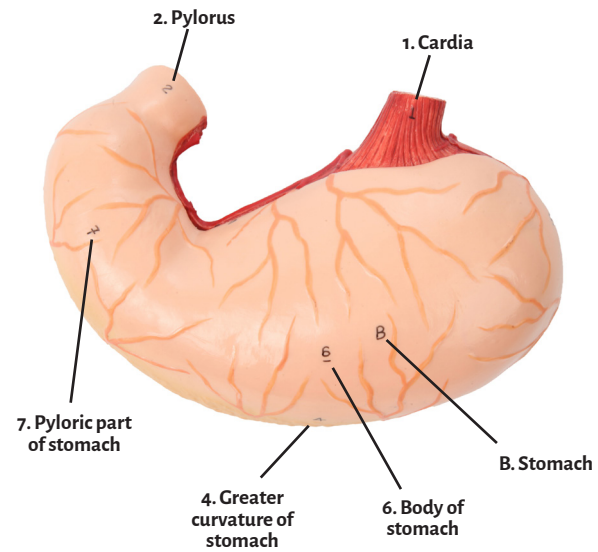
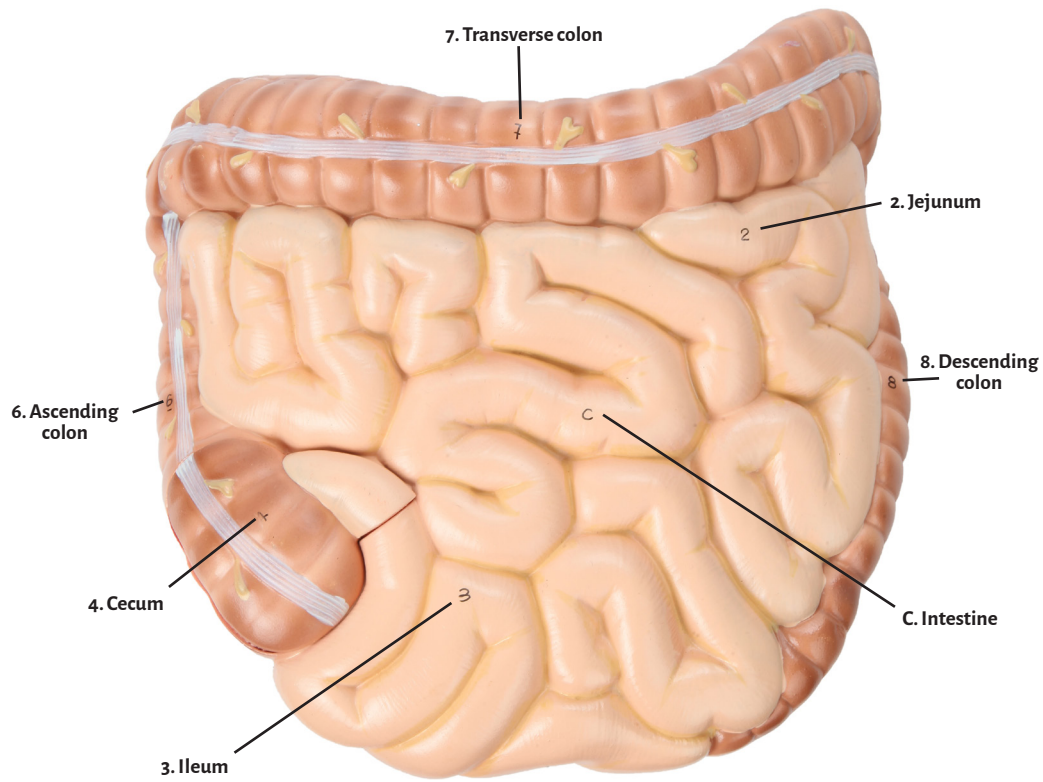
1. Spinal cord
2. Posterior root
3. Anterior root
4. Spinal ganglion
5. Spinal nerves
6. Posterior branch
7. Anterior branch
8. Communicating branch
9. Suboccipital nerve
10. Greater occipital nerve
11. Conus medullaris
12. Filum terminale
13. Cauda equina
14. Spinal dura mater
15. Spinal arachnoid mater
16. Spinal pia mater
17. Transverse process
18. Vertebral artery
19. Internal vertebral plexus
20. 7th thoracic vertebrae
21. 12th thoracic vertebrae
22. Intervertebral disc
23. Anulus fibrosus
24. Nucleus pulposus

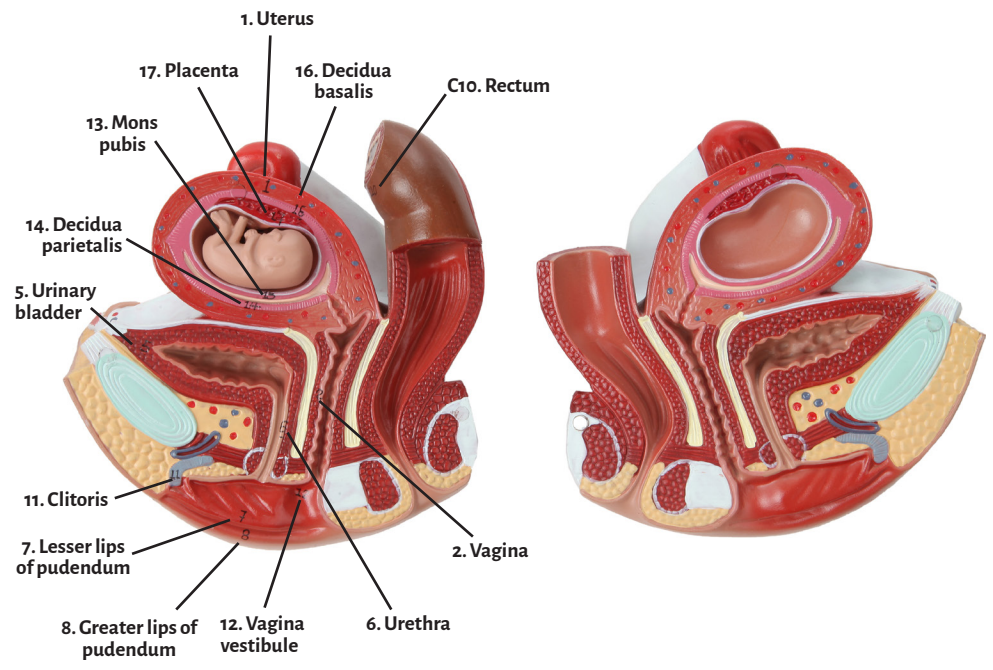
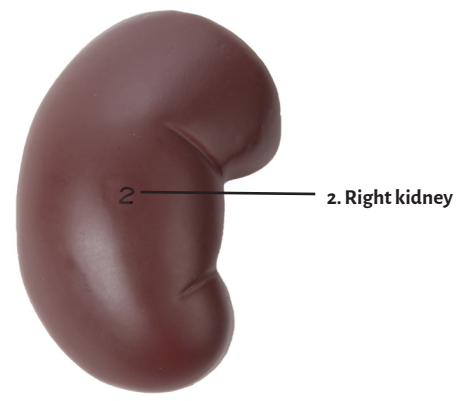
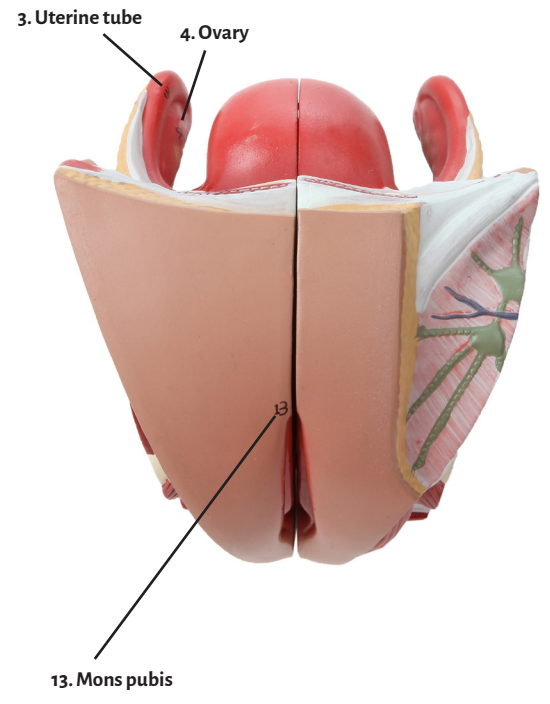
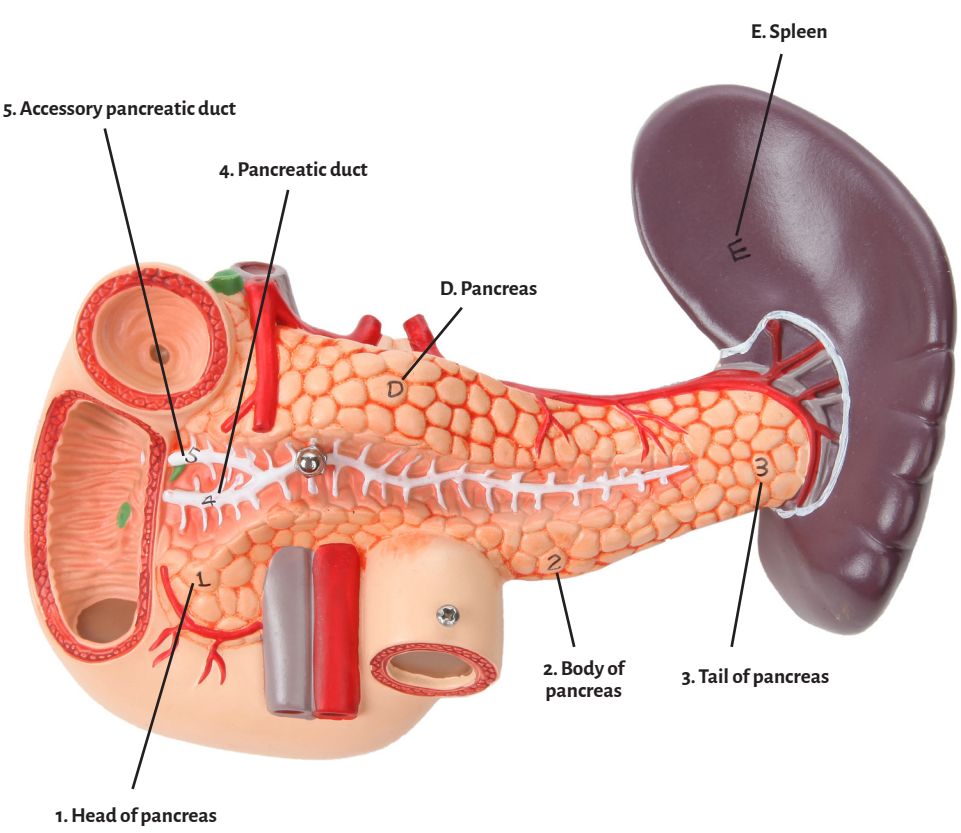
Region of Muscles

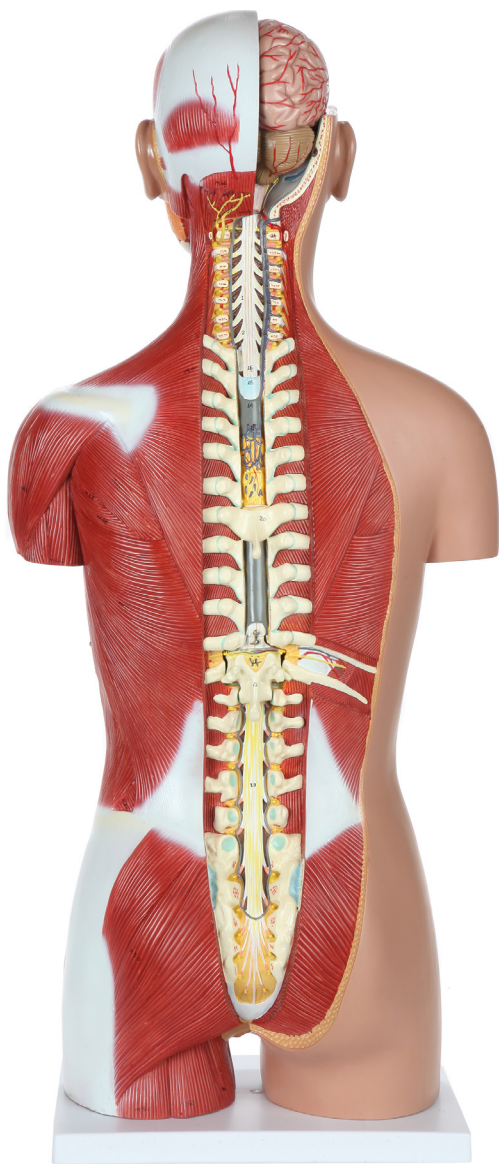
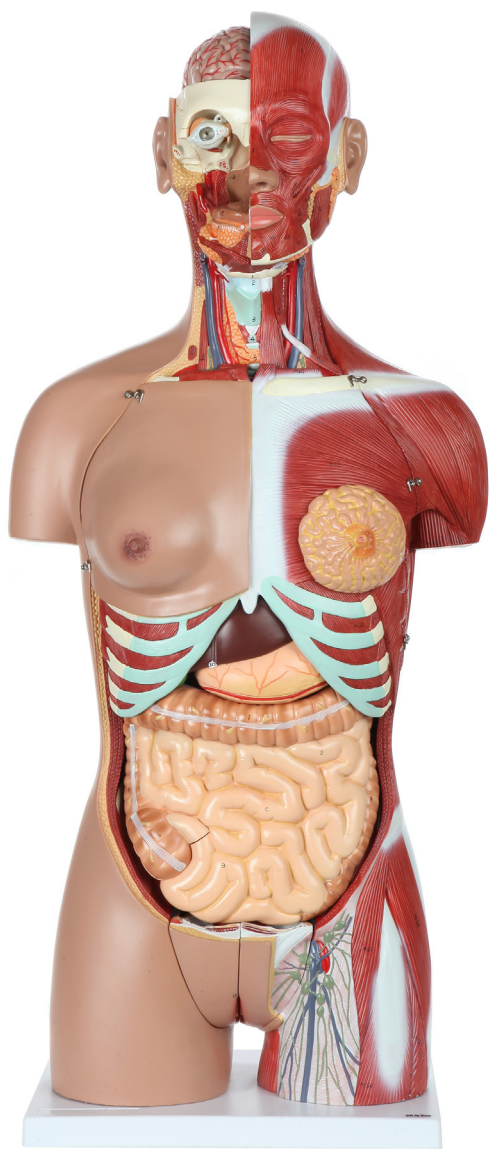
- M1. Styloglossus
- M2. Stylohyoid
- M3. Posterior belly of digastric
- M4. Anterior belly of digastric
- M5. Mylohyoid
- M6. Sternocleidomastoid
- M7. Anterior scalene
- M8. Superior belly of omohyoid
- M9. Inferior belly of omohyoid
- M10. Medial scalene
- M11. Sternohyoid
- M12. Sternothyroid
- M13. Sternal head of sternocleidomastoid
- M14. Clavicular head of sternocleidomastoid
- M15. Pectoralis major
- M16. Pectoralis minor
- M17. Subclavius
- M18. Transversus thoracis
- M19. Serratus anterior
- M20. External Oblique
- M21. External intercostal
- M22. Internal intercostal
- M23. Diaphragm
- M24. Internal abdominal oblique
- M25. Transverse abdominal
- M26. Quadratus lumborum
- M27. Psoas major
- M28. Psoas minor
- M29. Iliacus
- M30. Obturator internus
- M31. Obturator externus
- M32. Adductor brevis
- M33. Adductor longus
- M34. Levator ani
- M35. Piriformis
- M36. Semispinalis capitis
- M37. Obliquus capitis superior
- M38. Rectus capitis posterior major
- M39. Rectus capitis posterior minor
- M40. Trapezius
- M41. Deltoid
- M42. Short head of biceps brachii
- M43. Long head of biceps brachii
- M44. Lateral head of triceps brachii
- M45. Long head of triceps brachii
- M46. Infraspinatus
- M47. Teres minor
- M48. Teres major
- M49. Latissimus dorsi
- M50. Gluteus maximus
- M51. Biceps femoris
- M52. Semitendinosus
- M53. Sartorius
- M54. Rectus femoris
- M55. Vastus lateralis
- M56. Tensor fasciae latae











axis[™]
SCIENTIFIC

© 2018 AXIS SCIENTIFIC