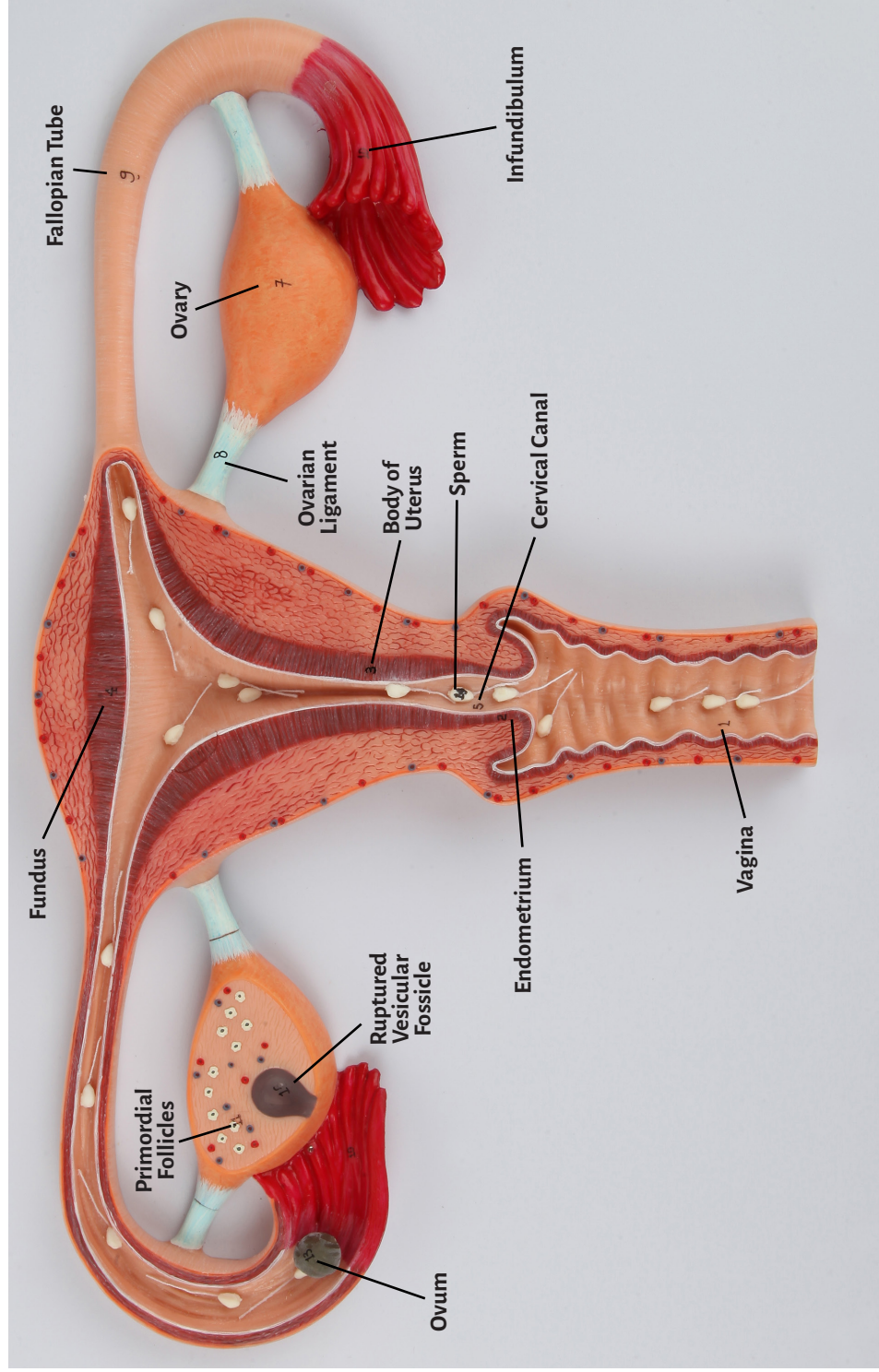
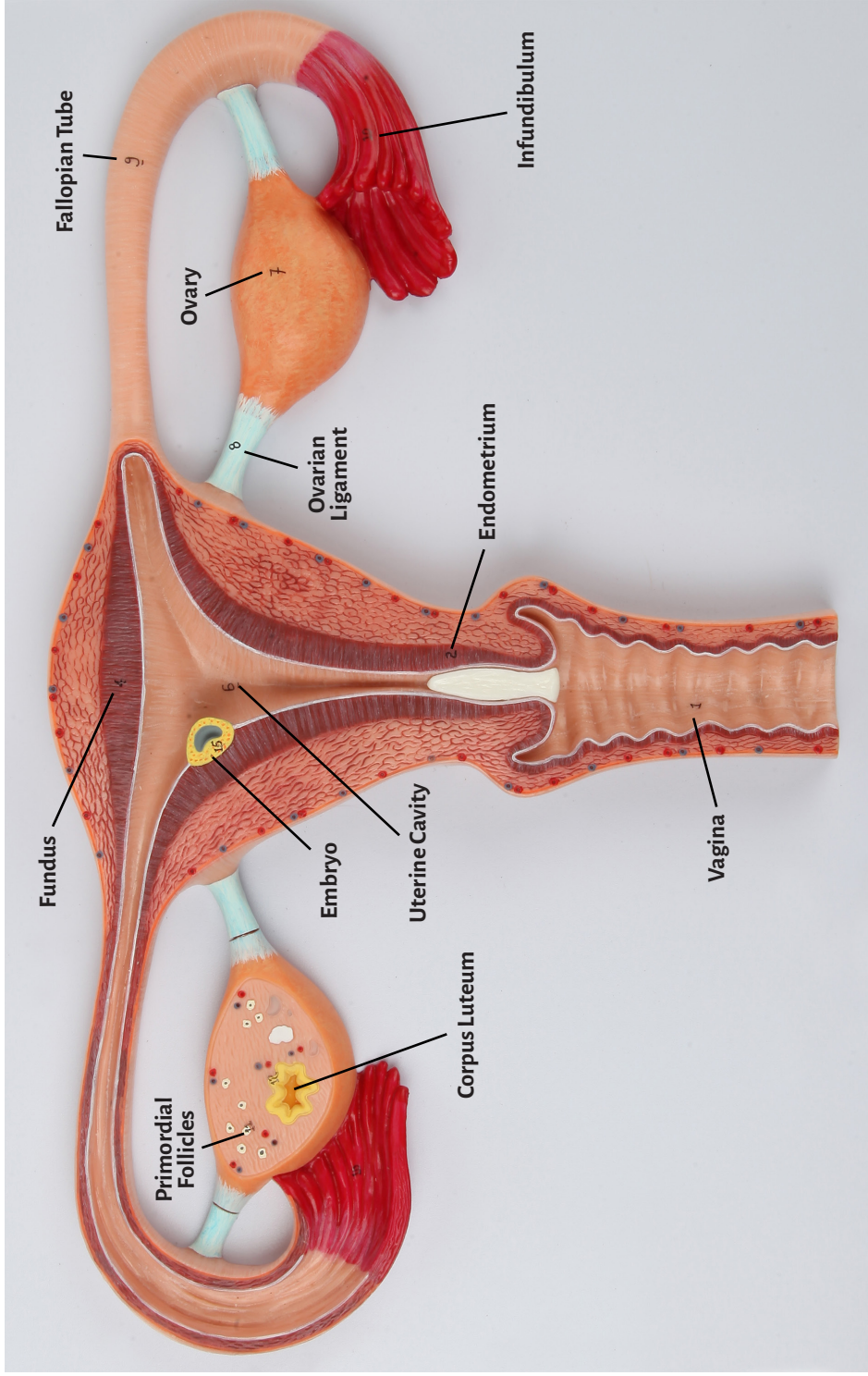


Axis Scientific Fertilization Process

A-106195





1. Vagina

2. Endometrium

3. Body of Uterus

4. Fundus

5. Cervical Canal

6. Uterine Cavity

7. Ovary

8. Ovarian Ligament

9. Fallopian Tube

10. Infundibulum

11. Primordial Follicles

12. Corpus Luteum

13. Ovum

14. Sperm

15. Embryo

16. Ruptured Vesicular Fossicle

