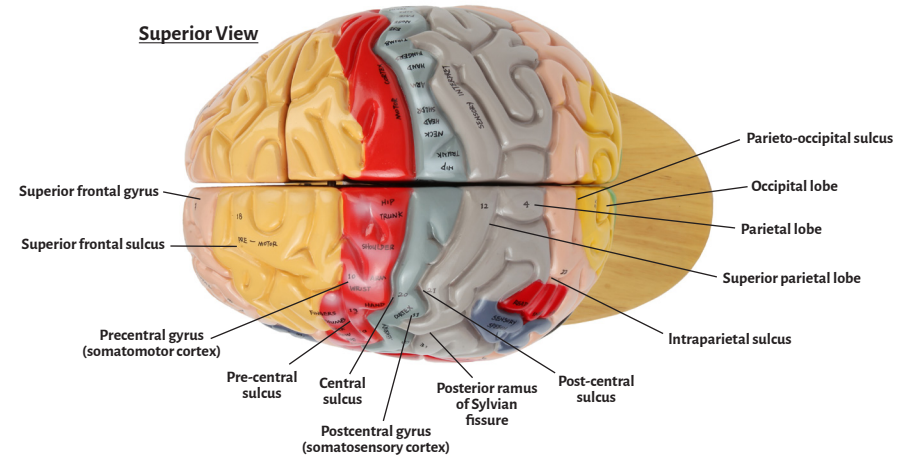
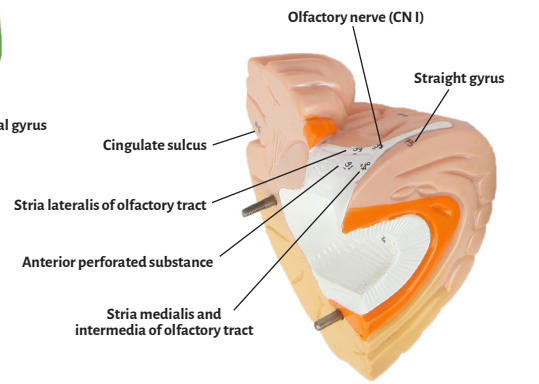
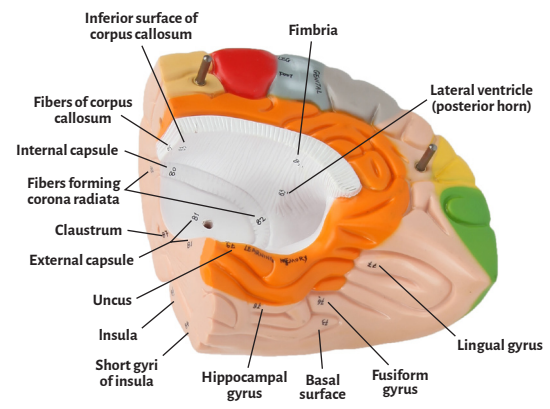
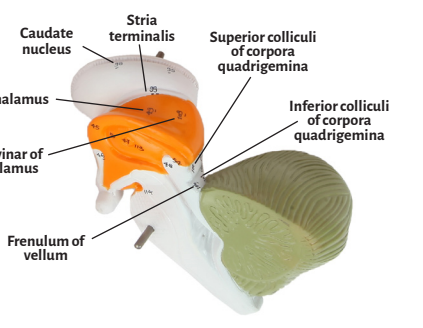
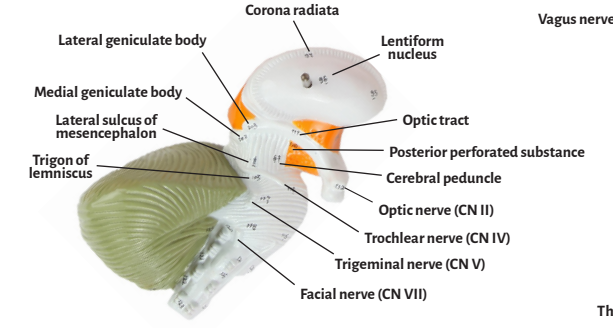
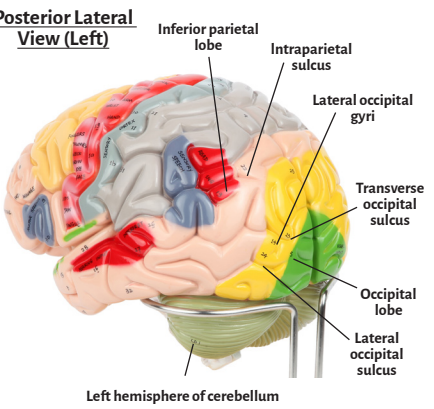
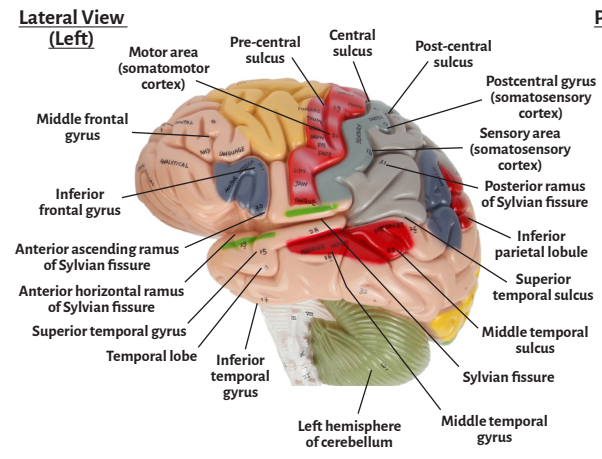
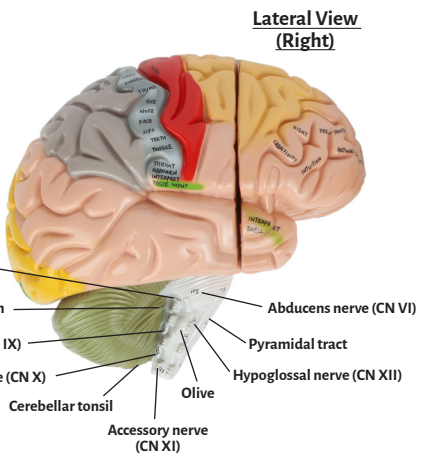
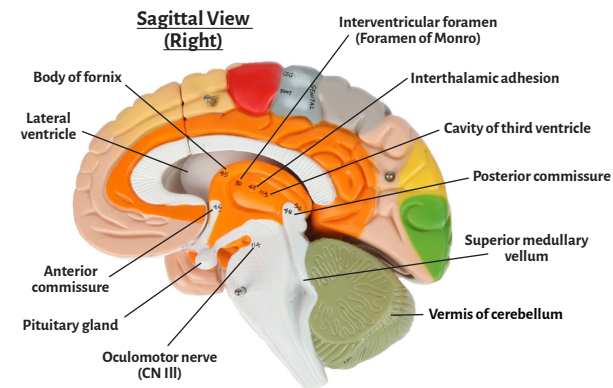
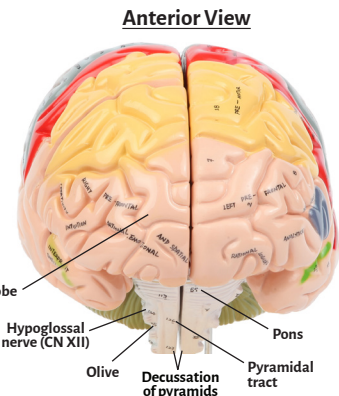
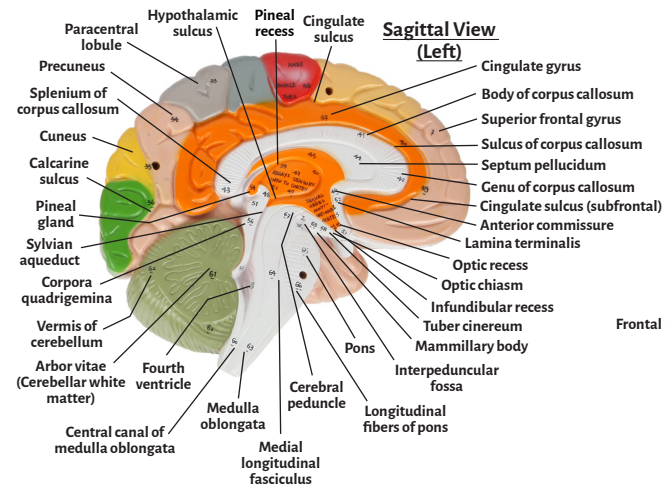




Axis Scientific Deluxe Brain

A-106198





Frontal lobe
Temporal lobe
Parietal lobe
Occipital lobe
Left hemisphere of cerebellum
Superior frontal gyrus
Middle frontal gyrus
Inferior frontal gyrus
Precentral gyrus (somatomotor cortex)
Postcentral gyrus (somatosensory cortex)
Superior parietal lobe
Inferior parietal lobe
Lateral occipital gyri
Superior temporal gyrus
Middle temporal gyrus
Inferior temporal gyrus
Superior frontal sulcus
Motor area (somatomotor cortex)
Sensory area (somatosensory cortex)
Pre-central sulcus
Central sulcus
Post-central sulcus
Intraparietal sulcus
Transverse occipital sulcus
Lateral occipital sulcus
Parieto-occipital sulcus
Superior temporal sulcus
Middle temporal sulcus
Sylvian fissure
Anterior horizontal ramus of Sylvian fissure
Anterior ascending ramus of Sylvian fissure
Posterior ramus of Sylvian fissure
Inferior temporal gyrus
Paracentral lobe
Precuneus
Cuneus
Calcarine sulcus
Cingulate gyrus
Cingulate sulcus
Cingulate sulcus (subfrontal)
Sulcus of corpus callosum
Body of corpus callosum
Genu of corpus callosum
Splenium of corpus callosum
Septum pellucidum
Body of fornix
Anterior commissure
Intermediate mass
Posterior commissure
Thalamus
Foramen of Monro
Hypothalamic sulcus
Lamina terminalis
Optic chiasm
Pineal gland
Pineal recess
Corpora quadrigemina
Sylvian aqueduct
Superior medullary vellum
Fourth ventricle

Central canal of medulla oblongata
Cerebellar white matter
Vermis of cerebellum
Medulla oblongata
Medial longitudinal fasciculus
Pons
Longitudinal fibers of pons
Cerebral peduncle
Tuber cinereum
Mammillary body
Interpeduncular fossa
Optic recess
Infundibular recess
Basal surface
Orbital gyri
Straight gyrus
Lingual gyrus
Uncus
Internal capsule
External capsule
Fibers forming corona radiata
Inferior surface of corpus callosum
Short gyri of insula
Fibers of corpus callosum
Insula
Claustrum
Lateral ventricle (anterior horn)
Lateral ventricle (posterior horn)
Fimbria
Anterior perforated substance
Posterior perforated substance
Stria lateralis of olfactory tract
Lentiform nucleus
Corona radiata
Caudate nucleus
Stria terminalis
Superior colliculi of corpora quadrigemina
Inferior colliculi of corpora quadrigemina
Medial geniculate body
Lateral geniculate body
Lateral sulcus of mesencephalon
Trigonum of lemniscus
Frenulum of vellum
Pulvinar of thalamus
Optic tract
Cavity of third ventricle
Pituitary gland
Olive
Pyramidal tracts
Decussation of pyramids
Flocculus of cerebellum
Tonsils of cerebellum
Vermis of cerebellum

Cranial Nerves

Olfactory nerve (Cranial nerve I)
Optic nerve (Cranial nerve II)
Oculomotor nerve (Cranial nerve III)
Trochlear nerve (Cranial nerve IV)
Trigeminal nerve (Cranial nerve V)
Abducens nerve (Cranial nerve VI)
Facial nerve (Cranial nerve VII)
Vestibulocochlear nerve (Cranial nerve VIII)
Glossopharyngeal nerve (Cranial nerve IX)
Vagus nerve (Cranial nerve X)
Accessory nerve (Cranial nerve XI)
Hypoglossal nerve (Cranial nerve XII)

