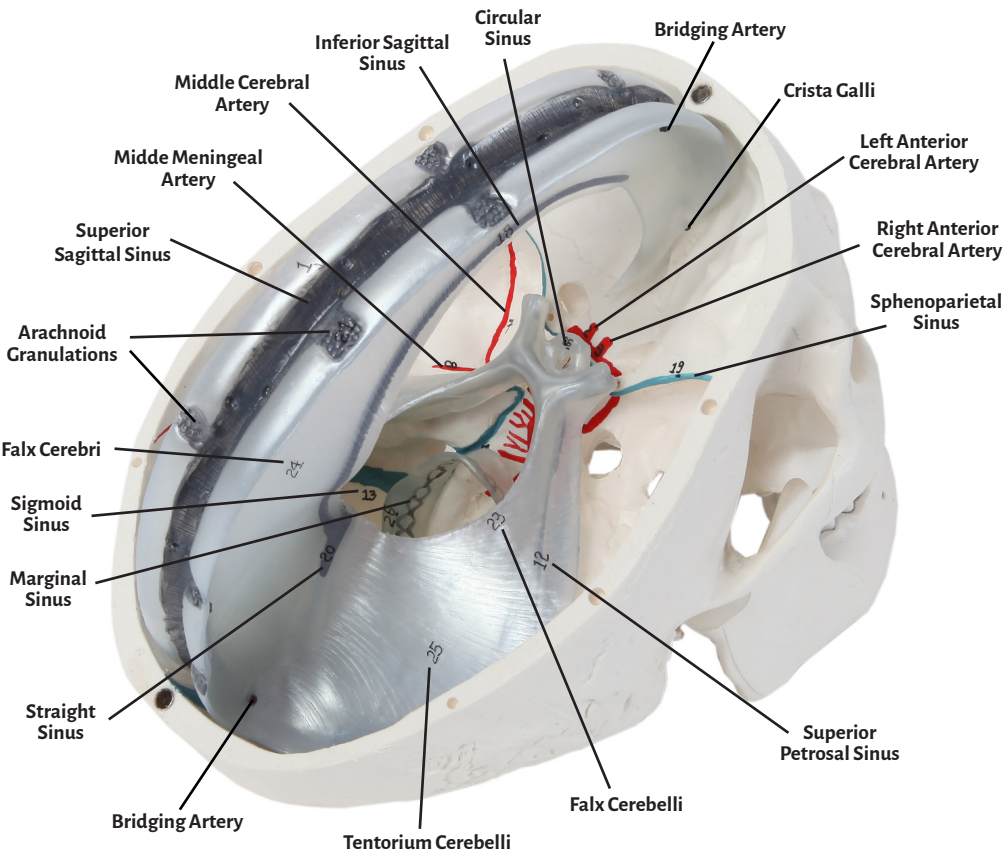
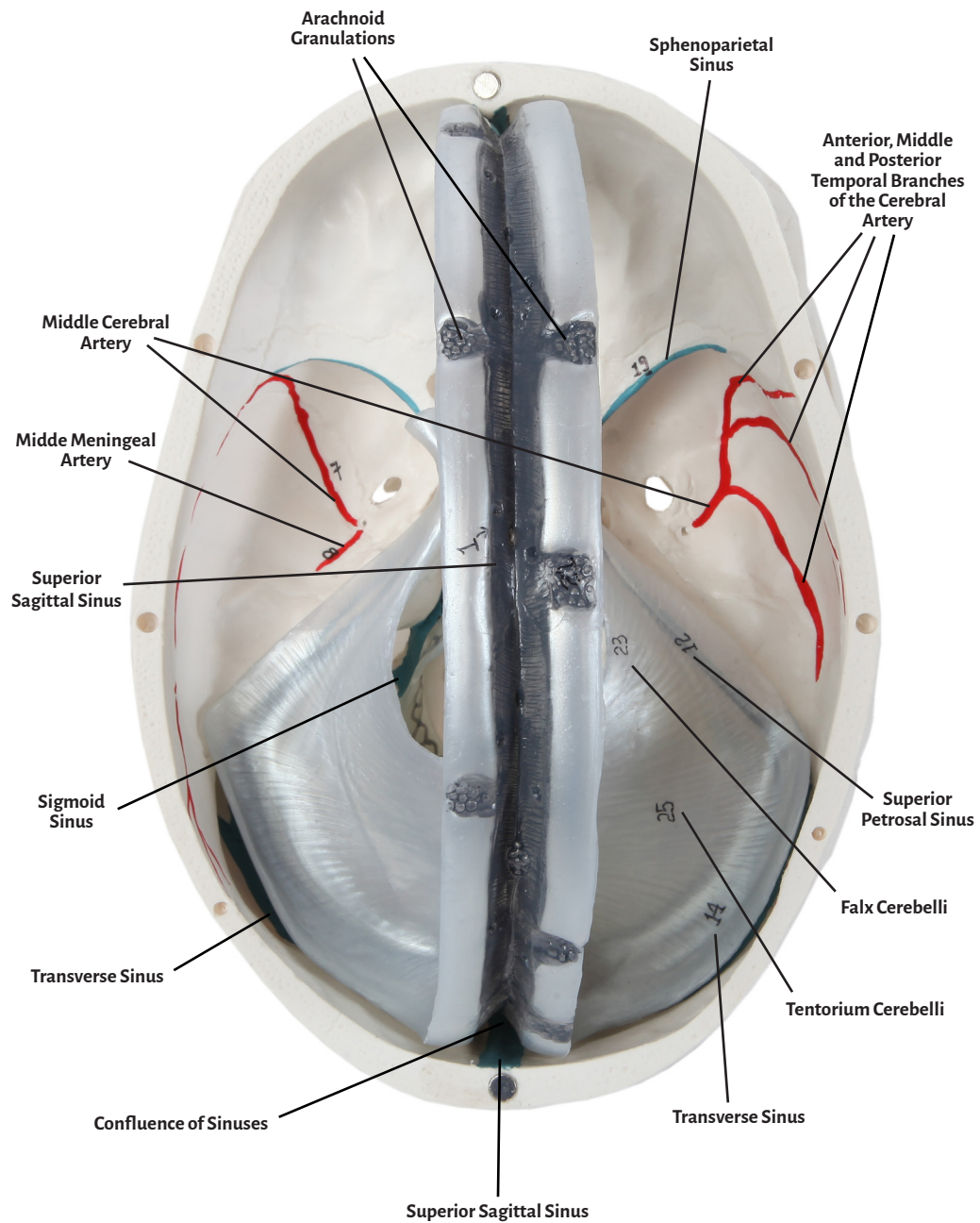
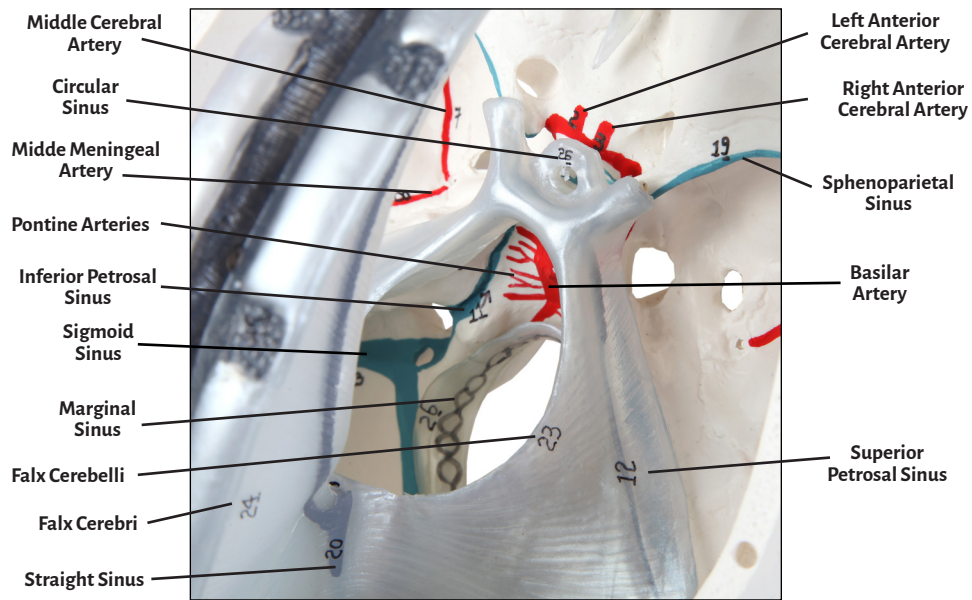




**Axis Scientific 3-Part Human Skull with Dura Mater, Blood Vessel Pathways, and Sinus Cavities**

**A-106695**





**Superior Sagittal Sinus**

**Left Anterior Cerebral Artery**

**Right Anterior Cerebral Artery**

**Anterior Intercavernous Sinus**

**Posterior Intercavernous Sinus**

**Circular Sinus**

**Middle Meningeal Artery**

**Pontine Arteries**

**Basilar Artery**

**Middle Cerebral Artery**

**Anterior, Middle and Posterior Temporal  
Branches of the Cerebral Artery**

**Bridging Artery**

**Superior Sagittal Sinus**

**Confluence of Sinuses**

**Occipital Sinus**

**Cavernous Sinus**

**Inferior Sagittal Sinus**

**Sphenoparietal Sinus**

**Straight Sinus**

**Marginal Sinus**

**Arachnoid Granulations**

**Crista Galli**

**Falx Cerebelli**

**Falx Cerebri**

**Tentorium Cerebelli**

**Inferior Petrosal Sinus**

**Superior Petrosal Sinus**

**Sigmoid Sinus**

**Transverse Sinus**

