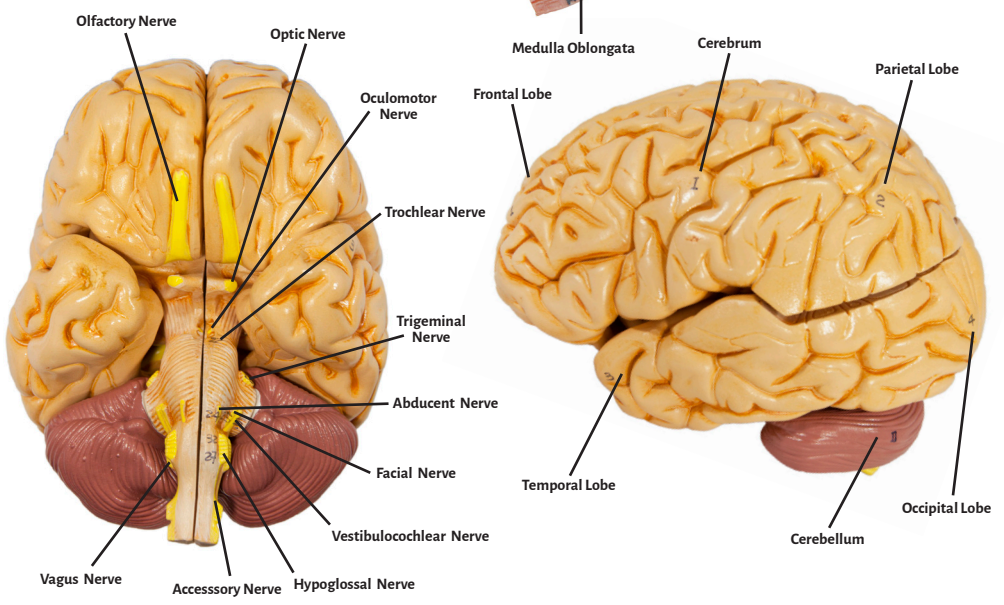
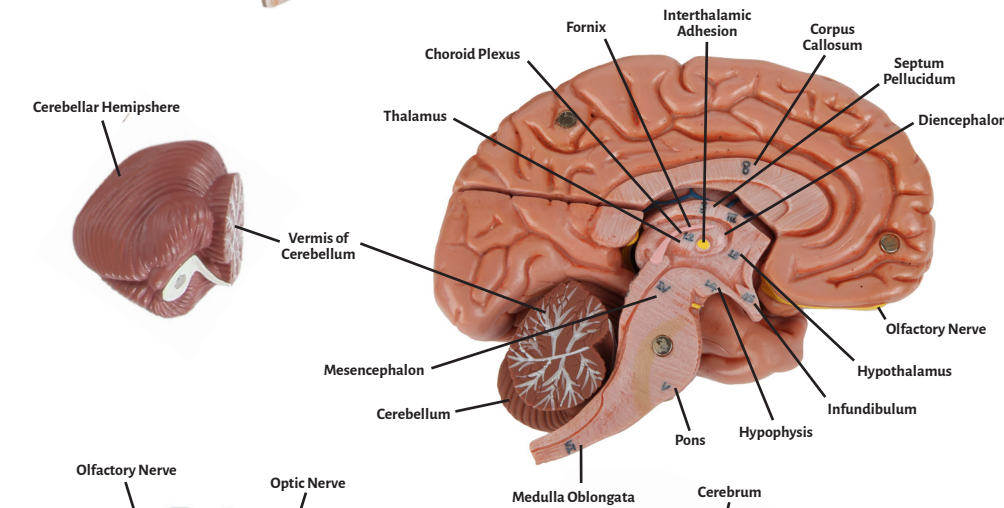
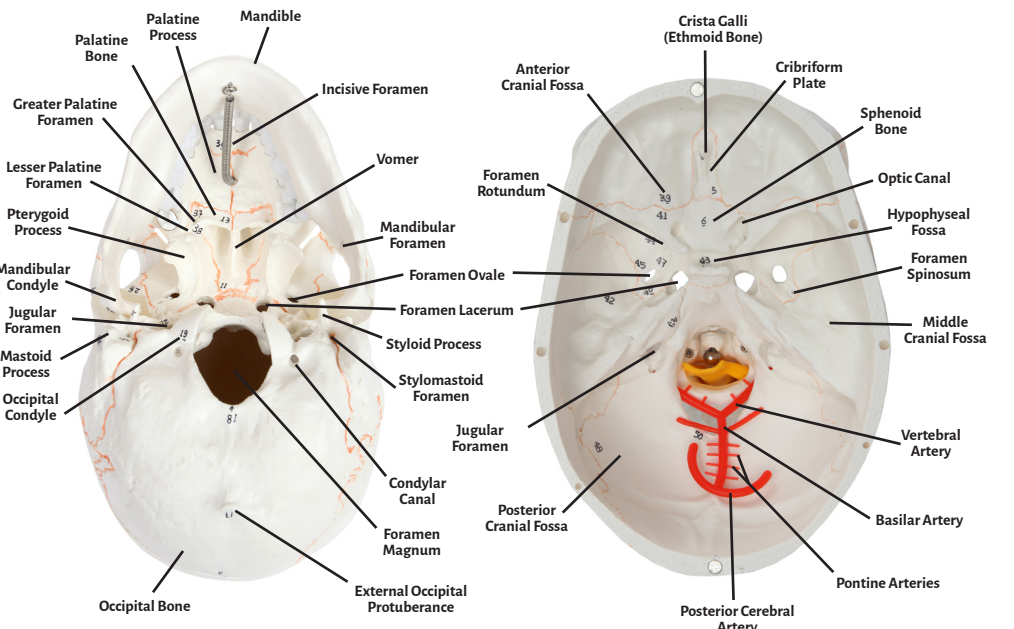
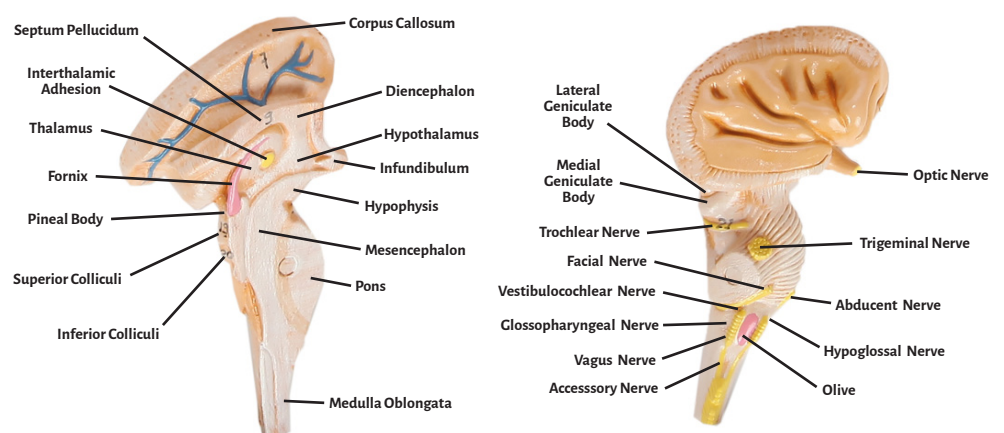
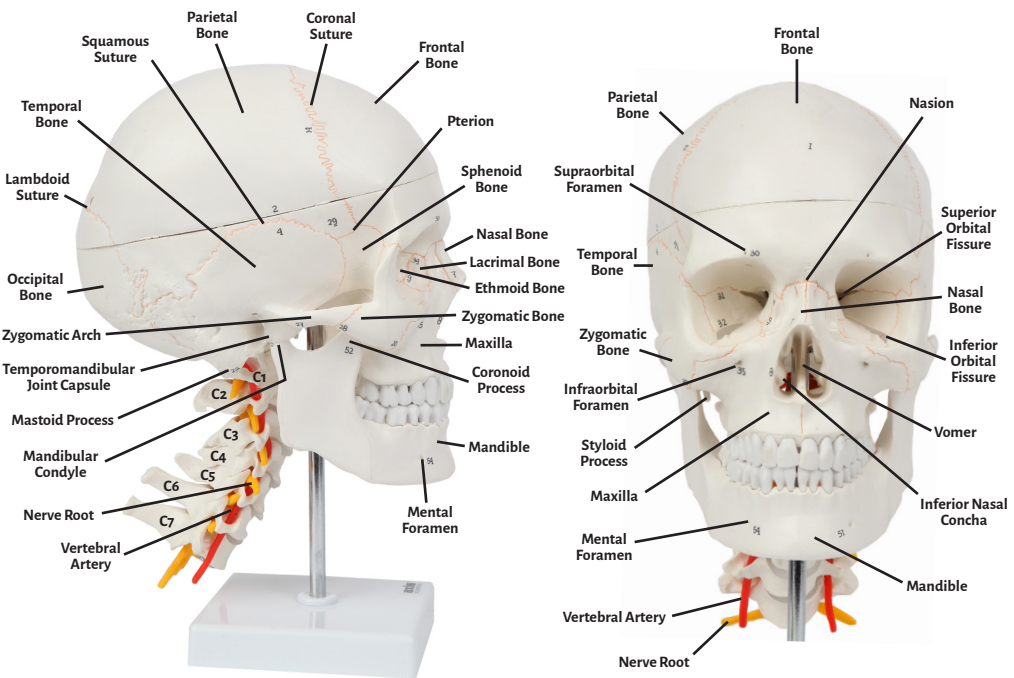




**Axis Scientific Skull with Painted Sutures, Cervical
Vertebrae, and 8-Part Soft Brain**

A-108311





Abducent Nerve
Accessory Nerve
Anterior Cranial Fossa
Basilar Artery
Choroid Plexus
Cerebellum
Cerebellar Hemisphere
Cerebrum
Coronal Suture
Coronoid Process
Corpus Callosum
Cribriform Plate
Crista Galli (Ethmoid Bone)
Diencephalon
Ethmoid Bone
External Occipital Protuberance
Facial Nerve
Foramen Lacerum
Foramen Magnum
Foramen Ovale
Foramen Rotundum
Foramen Spinosum
Fornix
Frontal Bone
Frontal Lobe
Glossopharyngeal Nerve
Greater Palatine Foramen
Hypoglossal Nerve
Hypophyseal Fossa
Hypophysis
Hypothalamus
Incisive Foramen
Inferior Colliculi

Inferior Nasal Concha
Inferior Orbital Fissure
Infraorbital Foramen
Infundibulum
Interthalamic Adhesion
Internal Acoustic Meatus
Jugular Foramen
Lacrimal Bone
Lambdoid Suture
Lesser Palatine Foramen
Lateral Geniculate Body
Mandible
Mandibular Condyle
Mandibular Foramen
Mastoid Process
Maxilla
Medial Geniculate Body
Middle Cranial Fossa
Medulla Oblongata
Mesencephalon
Mental Foramen
Nasal Bone
Nasion
Nerve Root
Occipital Bone
Occipital Condyle
Occipital Lobe
Oculomotor Nerve
Olive
Olfactory Nerve
Optic Canal

Optic Nerve
Palatine Bone
Parietal Bone
Parietal Lobe
Pineal Body
Pons
Pontine Arteries
Posterior Cerebral Artery
Posterior Cranial Fossa
Pterion
Pterygoid Process
Septum Pellucidum
Sphenoid Bone
Styloid Process
Stylomastoid Foramen
Superior Colliculi
Superior Orbital Fissure
Supraorbital Foramen
Squamous Suture
Thalamus
Temporal Bone
Temporal Lobe
Temporomandibular Joint Capsule
Trochlear Nerve
Trigeminal Nerve
Vagus Nerve
Vermis of Cerebellum
Vertebral Artery
Vestibulocochlear Nerve
Vomer
Zygomatic Arch
Zygomatic Bone

