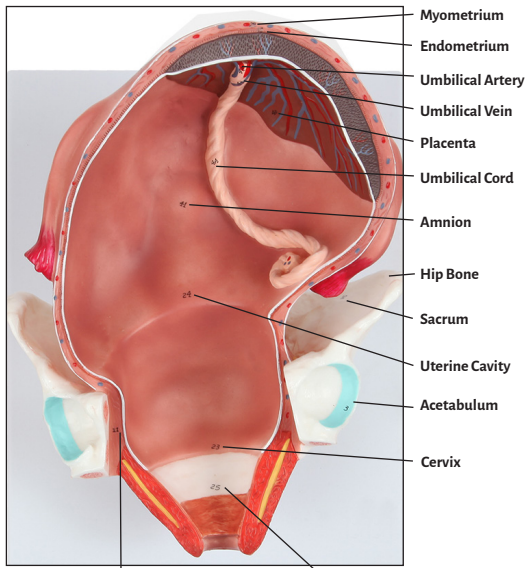


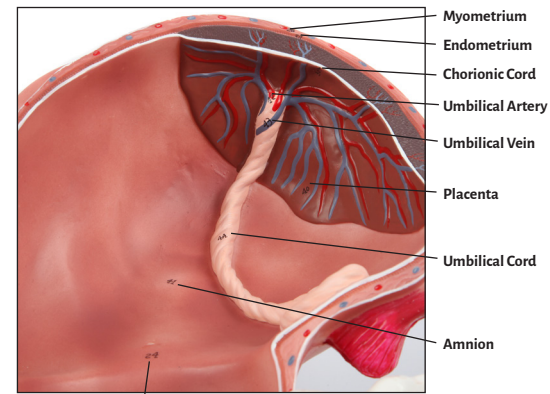


Axis Scientific 3-Stages of Childbirth

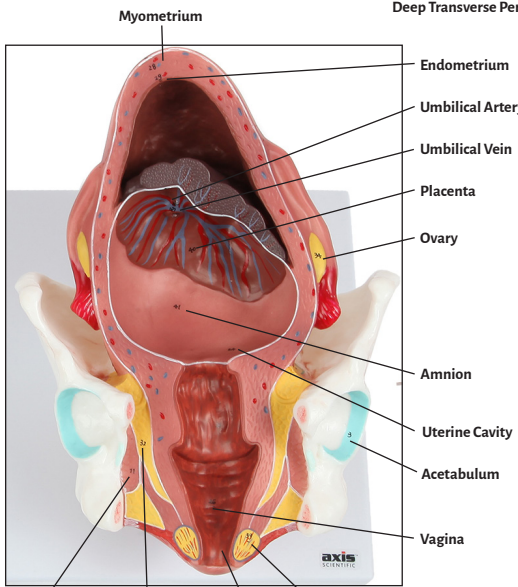
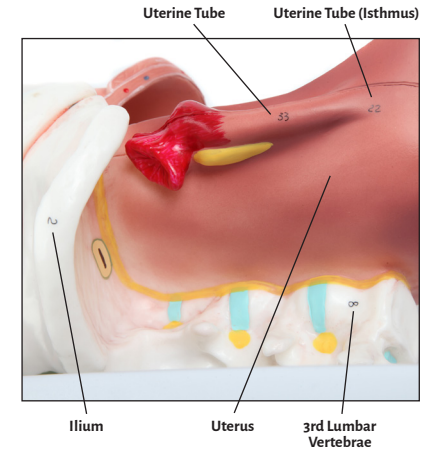
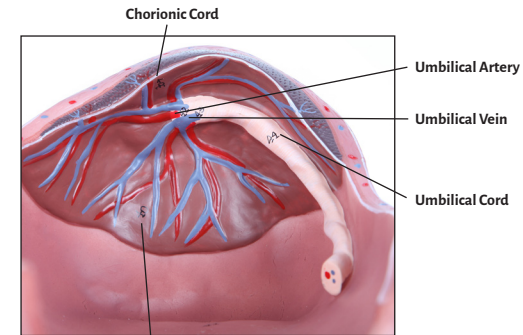
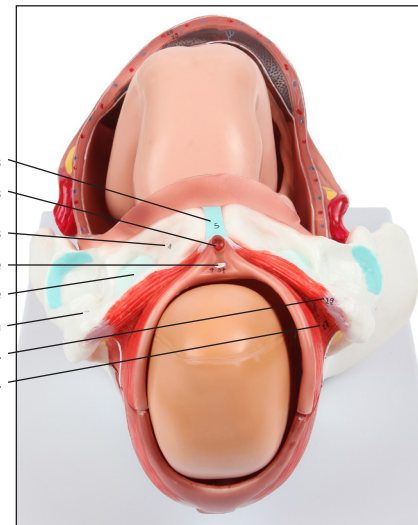
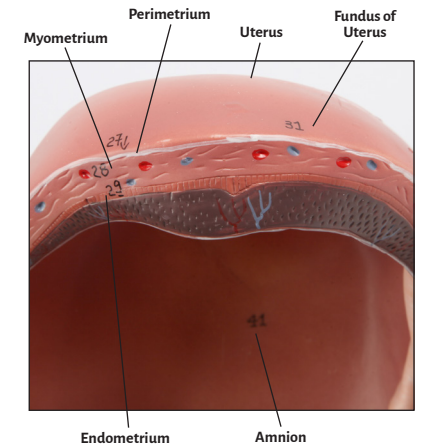
A-108847



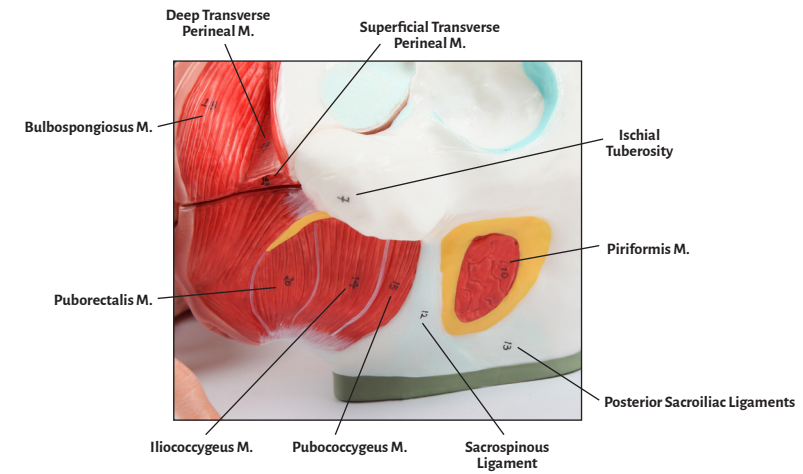
Obturator Internus M. Open Amniotic Membrane



Uterine Cavity



Obturator Internus M. Endopelvic Fascia Vaginal Orifice Bulb of Vestibule





Acetabulum	Ovary
Amnion	Perimetrium
Bulb of Vestibule	Piriformis Muscle
Bulbospongiosus Muscle	Placenta
Chorionic Cord	Posterior Sacroiliac Ligaments
Cervix	Pubic Symphysis
Deep Transverse Perineal Muscle	Pubis
Endometrium	Pubococcygeus Muscle
Endopelvic Fascia	Puborectalis Muscle
External Urethral Orifice	Sacrospinous Ligament
Fundus of Uterus	Sacrum
Glans of Clitoris	Superficial Transverse Perineal Muscle
Hip Bone	Uterine Cavity
Iliococcygeus Muscle	Uterine Tube
Ilium	Uterine Tube (Isthmus)
Ischial Tuberosity	Uterus
Ischiocavernosus Muscle	Umbilical Arteries
Ischium	Umbilical Cord
Myometrium	Umbilical Vein
Obturator Internus Muscle	Vagina
Obturator Membrane	Vaginal Orifice
Open Amniotic Membrane	3rd Lumbar Vertebrae

