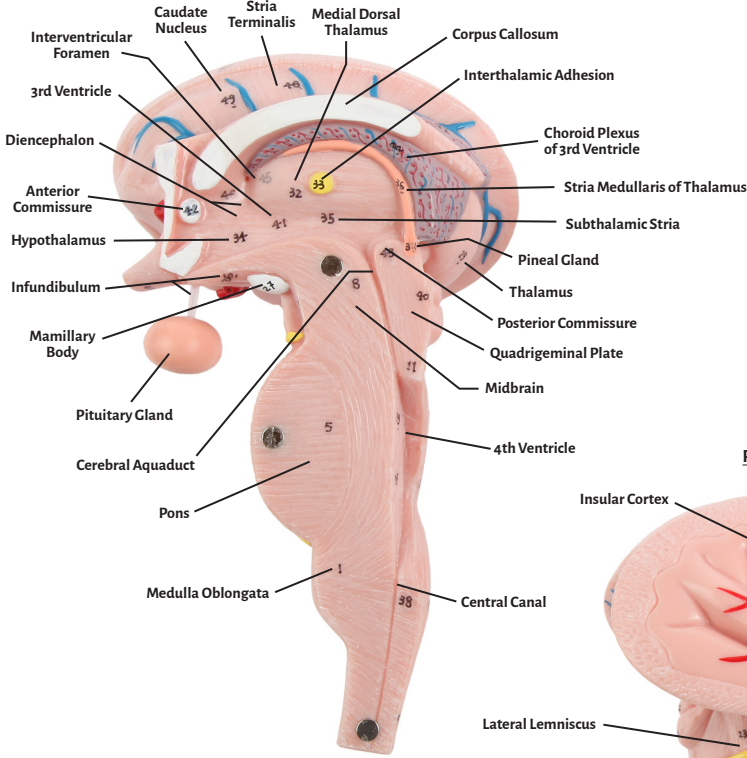


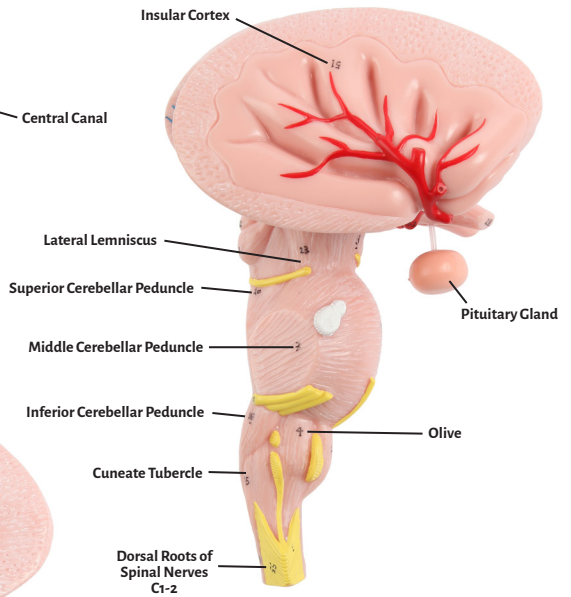
Axis Scientific Enlarged Brain Stem Anatomy Model

A-108848

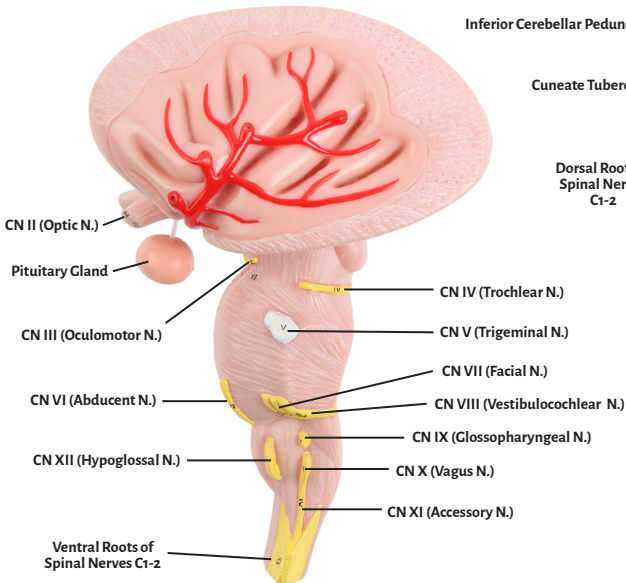
Sagittal View



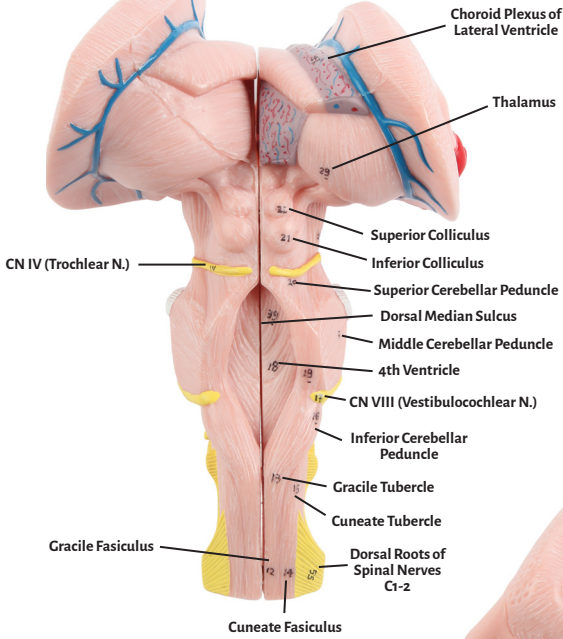
Right Side View



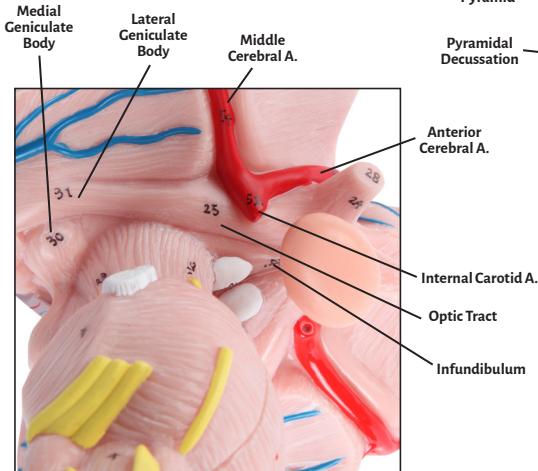
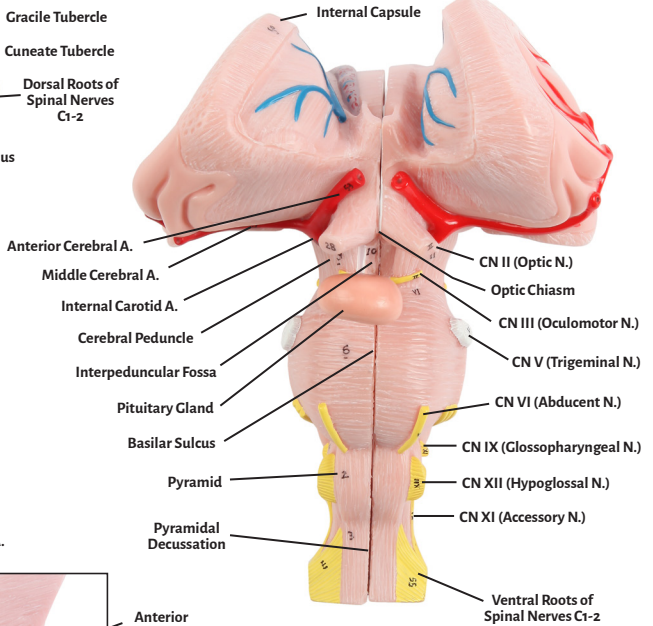
Left Side View



Dorsal View



Ventral View





Anterior Cerebral A.

Anterior Commissure

Basilar Sulcus

Caudate Nucleus

Central Canal

Cerebral Aquaduct

Cerebral Peduncle

Choroid Plexus of Lateral Ventricle

Choroid Plexus of 3rd Ventricle

4th Ventricle

Corpus Callosum

Cuneate Fasciculus

Cuneate Tubercle

Diencephalon

Dorsal Median Sulcus

Dorsal Roots of Spinal Nerves C1-2

Gracile Fasciculus

Gracile Tubercle

Hypothalamus

Infundibulum

Inferior Cerebellar Peduncle

Inferior Colliculus

Insular Cortex

Internal Carotid A.

Interpeduncular Fossa

Interthalamic Adhesion

Interventricular Foramen

Internal Capsule

Lateral Geniculate Body

Lateral Lemniscus

Medial Dorsal Thalamus

Medial Geniculate Body

Midbrain

Middle Cerebral A.

Middle Cerebellar Peduncle

Mamillary Body

Medulla Oblongata

Olive

Optic Chiasm

Optic Tract

Pineal Gland

Pons

Posterior Commissure

Pituitary Gland

Pyramidal Decussation

Pyramid

Quadrigeminal Plate

Stria Terminalis

Stria Medullaris of Thalamus

Subthalamic Stria

Superior Cerebellar Peduncle

Superior Colliculus

Thalamus

Ventral Roots of Spinal Nerves C1-2

Cranial Nerves

*CN I (Olfactory N.)

CN II (Optic N.)

CN III (Oculomotor N.)

CN IV (Trochlear N.)

CN V (Trigeminal N.)

CN VI (Abducent N.)

CN VII (Facial N.)

CN VIII (Vestibulocochlear N.)

CN IX (Glossopharyngeal N.)

CN X (Vagus N.)

CN XI (Accessory N.)

CN XII (Hypoglossal N.)

*not shown on model

