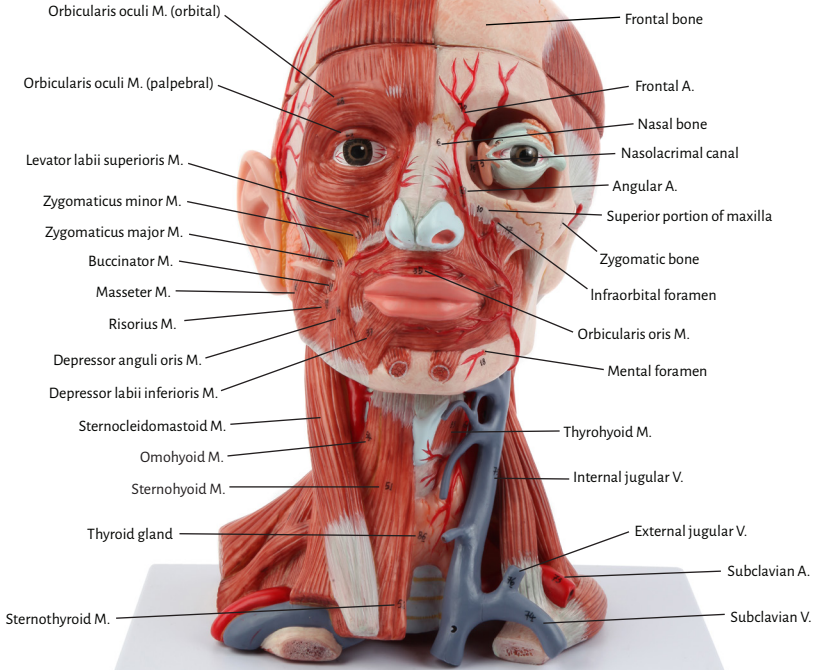




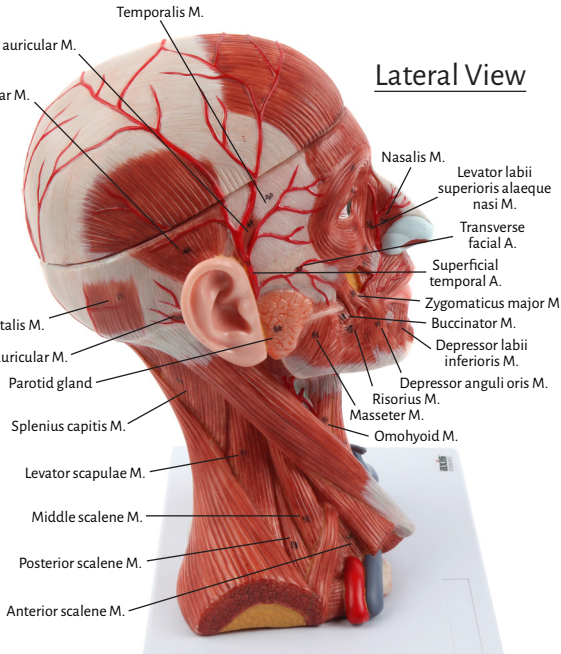
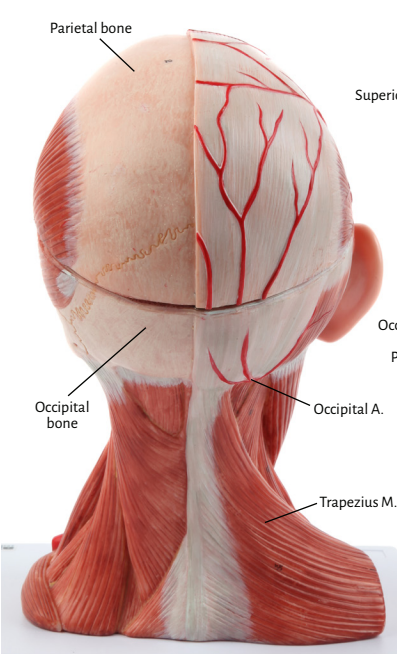
Axis Scientific Deluxe Head & Neck

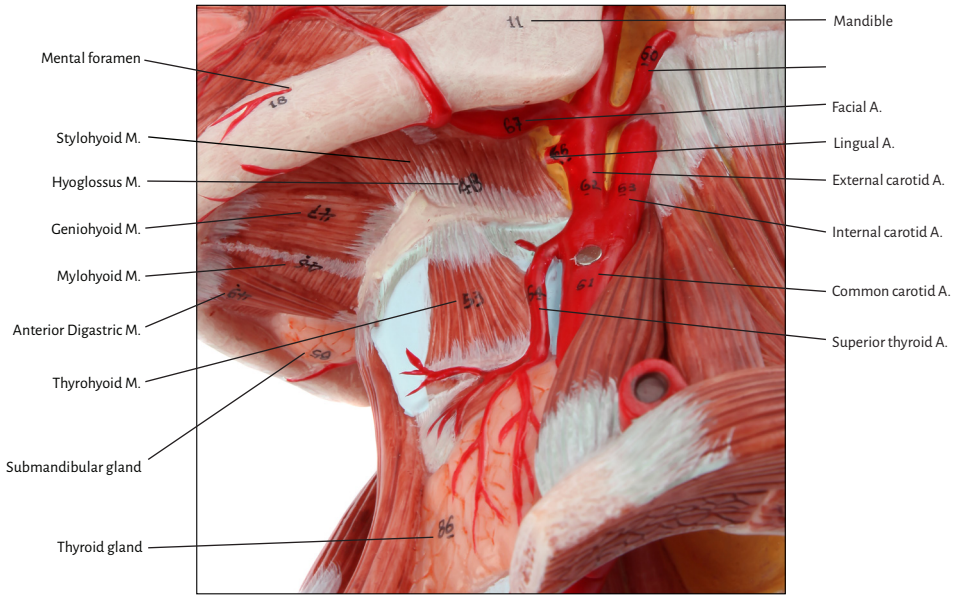
A-109124

Anterior View

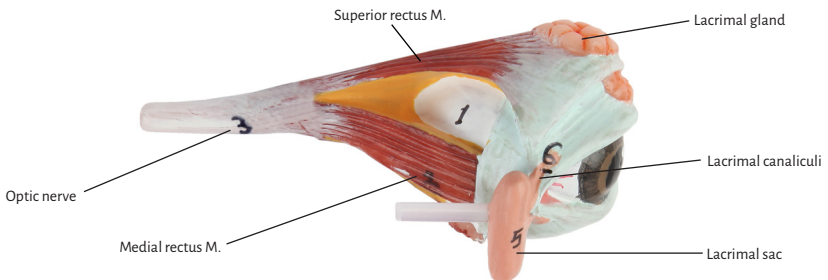
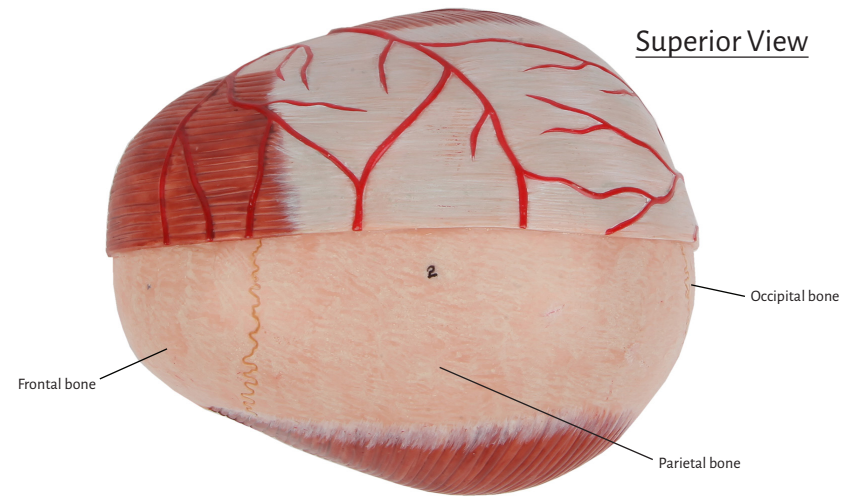


Lateral View

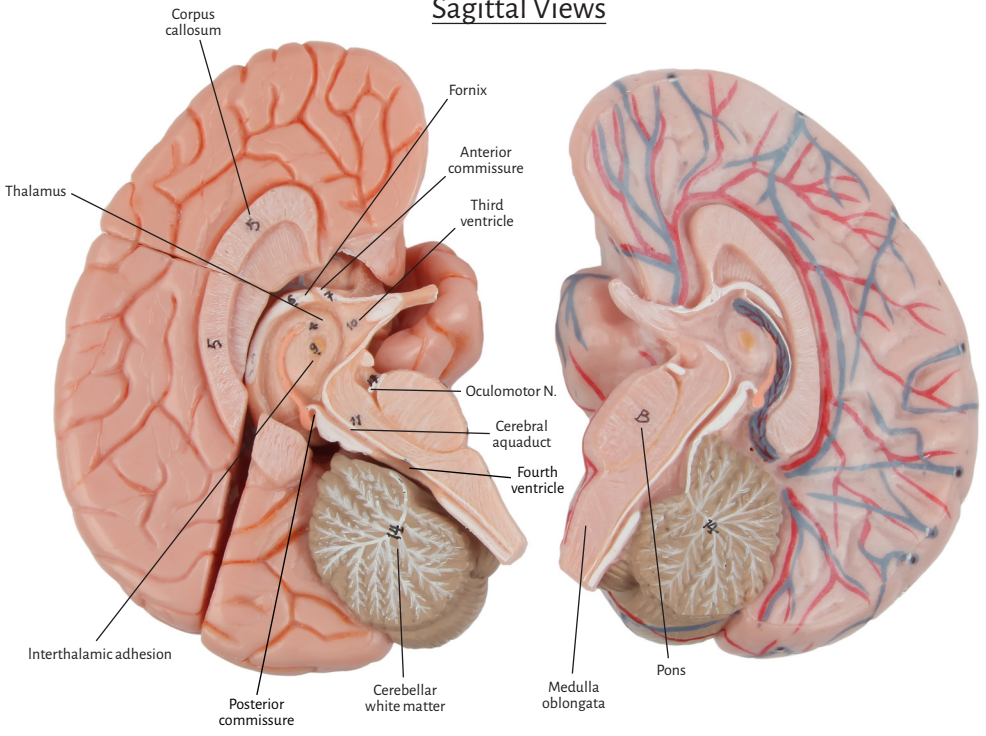




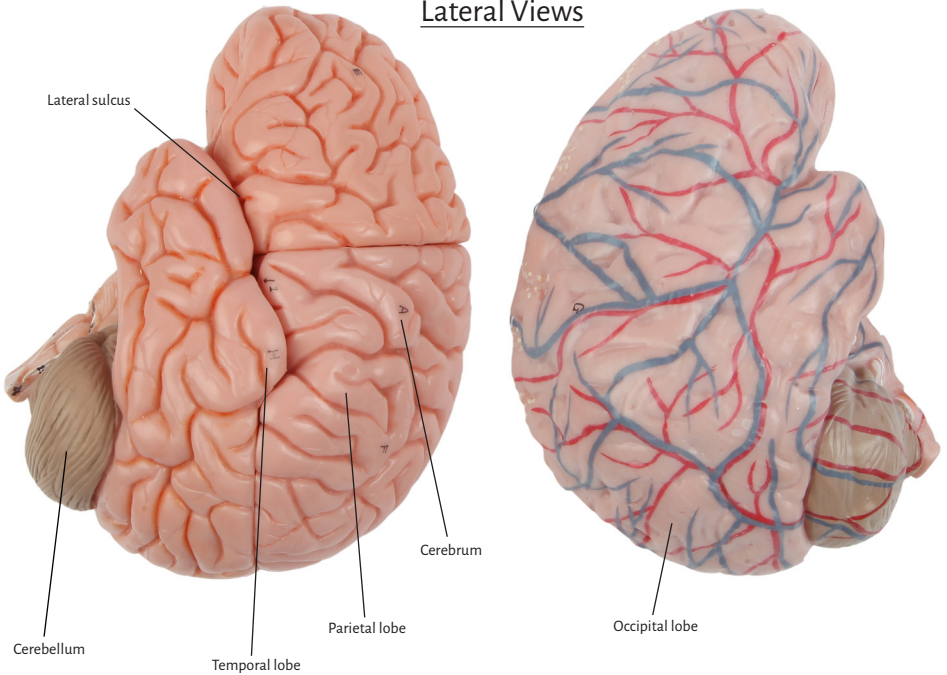
Superior View



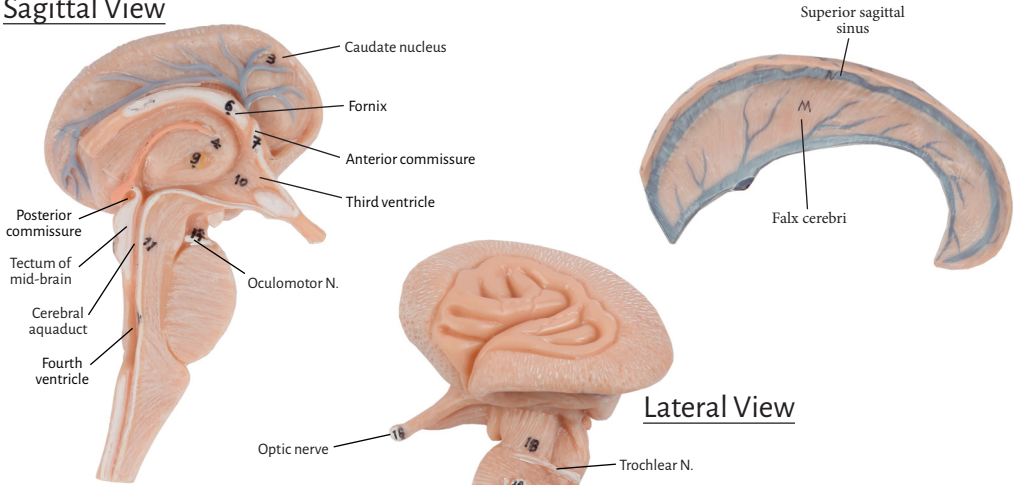
Sagittal Views



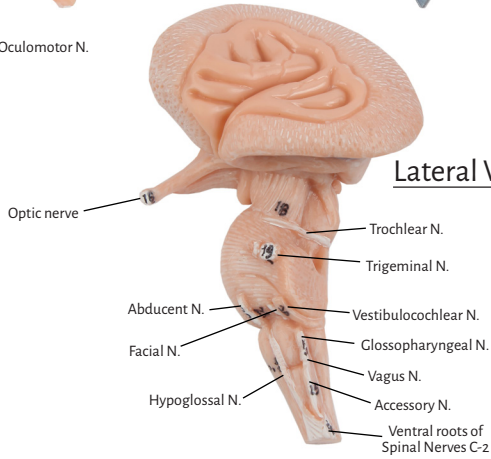
Lateral Views



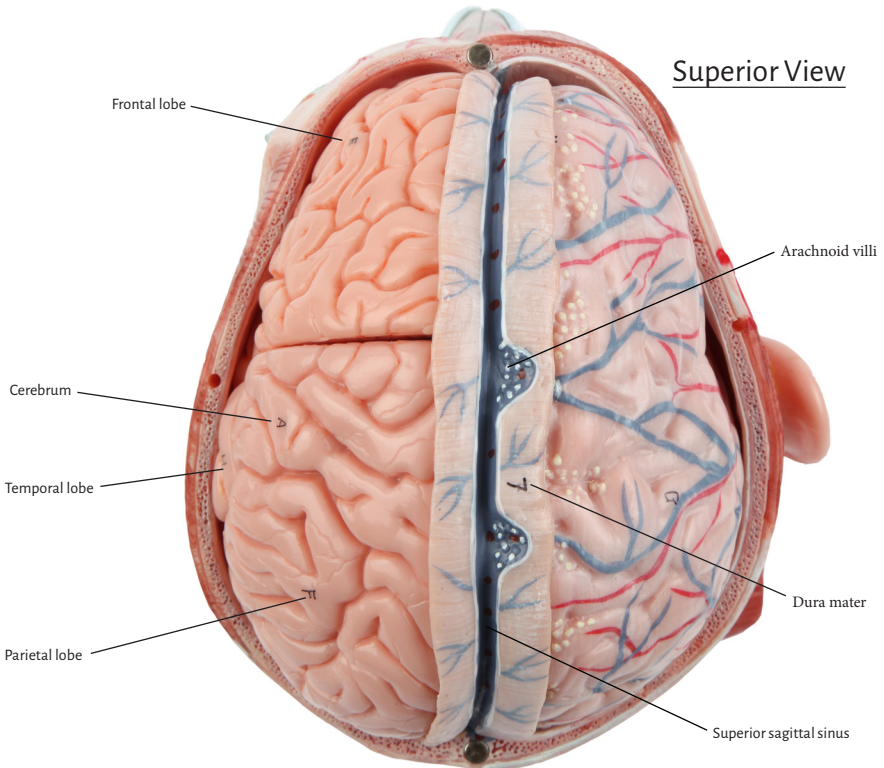
Sagittal View



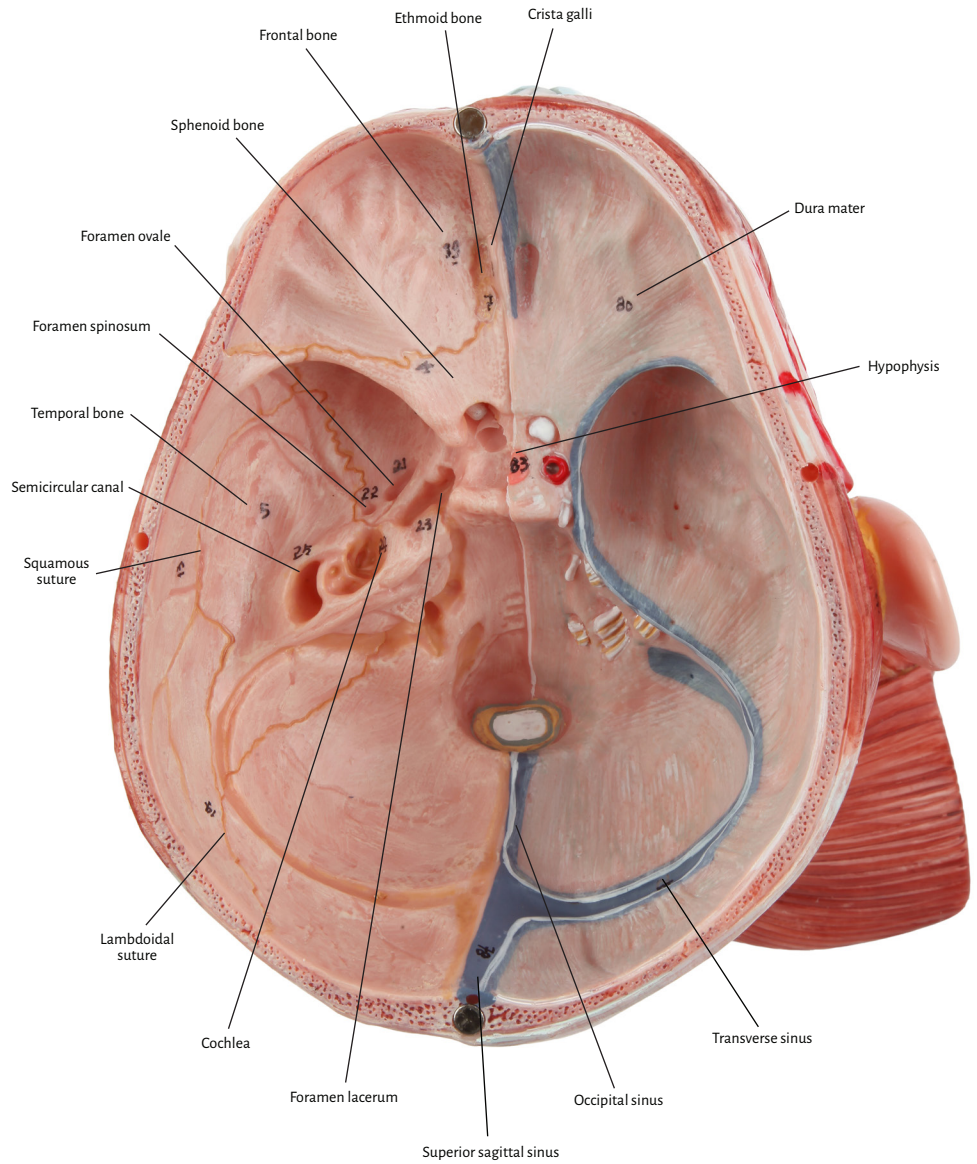
Lateral View



Superior View

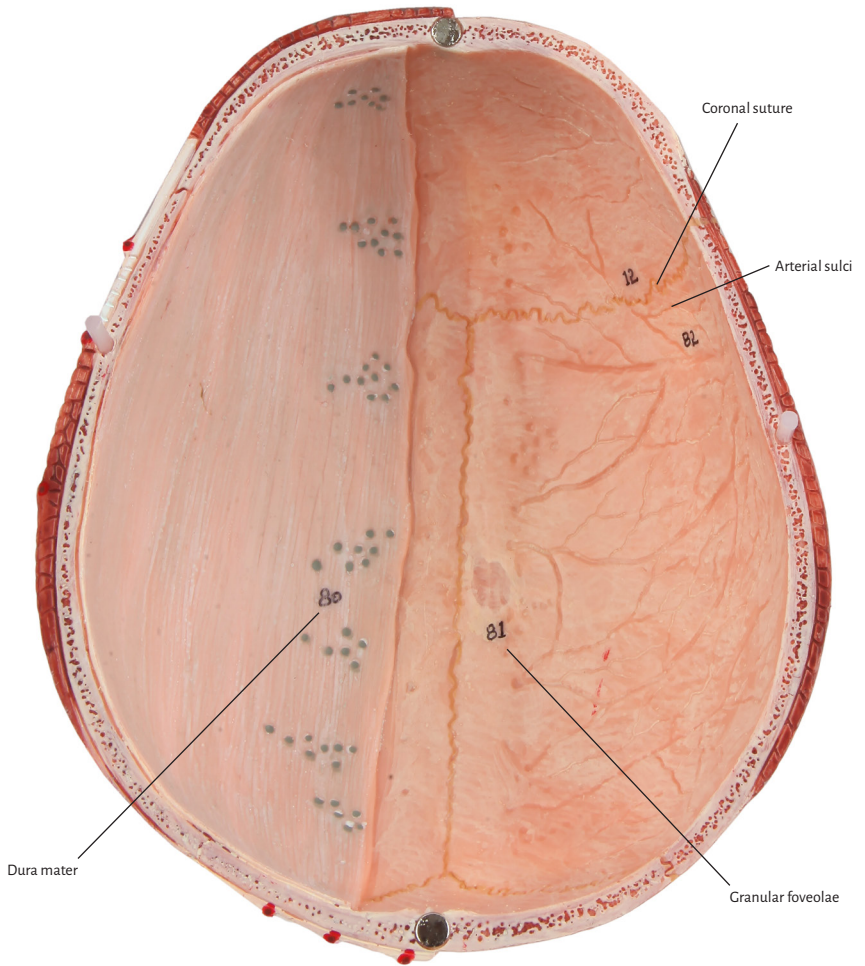


Superior View



*The petros portion of temporal bone has been chiselled away on the left

Inferior View





Muscles

Anterior auricular M.
Anterior digastric M.
Anterior scalene M.
Buccinator M.
Depressor anguli oris M.
Depressor labii inferioris M.
Hyoglossus M.
Geniohyoid M.
Levator labii superioris alaeque nasi M.
Levator labii superioris M.
Levator scapulae M.
Masseter M.
Middle scalene M.
Mylohyoid M.
Nasalis M.
Occipitofrontalis M.
Omohyoid M.
Orbicularis oculi M. (orbital)
Orbicularis oculi M. (palpebral)
Posterior auricular M.
Posterior scalene M.
Risorius M.
Splenius capitis M.
Sternocleidomastoid M.
Sternothyroid M.
Stylohyoid M.
Superior auricular M.
Superior rectus M.
Temporalis M.
Thyrohyoid M.
Trapezius M.
Zygomatikus major M.
Zygomatikus minor M.

Brain

Anterior commissure
Arachnoid villi
Caudate nucleus
Cerebellar white matter
Cerebellum
Cerebral aqueduct
Cerebrum
Corpus callosum
Dura mater
Falx cerebri
Fornix
Frontal lobe
Hypophysis
Interthalamic adhesion
Lateral sulcus
Medulla oblongata
Occipital lobe
Occipital sinus
Oculomotor nerve
Parietal lobe
Pons
Posterior commissure
Superior sagittal sinus
Temporal lobe
Thalamus
Third ventricle
Transverse sinus

Eye

Lacrimal canaliculi
Lacrimal gland
Lacrimal sac
Medial rectus M.
Optic nerve
Superior rectus M.

Bones

Arterial sulci
Coronal suture
Crista galli
Cochlea
Ethmoid bone
Frontal bone
Foramen ovale
Foramen spinosum
Foramen lacerum
Frontal bone
Granular foveolae
Infraorbital foramen
Lambdoidal suture
Mental foramen
Mandible
Nasal bone
Nasolacrimal canal
Occipital bone
Parietal bone
Semicircular canal
Squamous suture
Sphenoid bone
Temporal bone
Superior portion of maxilla
Zygomatic bone

Glands

Lacrimal gland
Parotid gland
Submandibular gland
Thyroid gland

Blood Vessels

Angular A.
Common carotid A.
External carotid A.
External jugular V.
Facial A.
Frontal A.
Internal carotid A.
Internal jugular V.
Lingual A.
Occipital A.
Sternohyoid M.
Subclavian A.
Subclavian V.
Superficial temporal A.
Superior thyroid A.
Transverse facial A.

Nerves

Optic N.
Oculomotor N.
Trochlear N.
Trigeminal N.
Abducent N.
Facial N.
Vestibulocochlear N.
Glossopharyngeal N.
Vagus N.
Hypoglossal N.
Ventral roots of Spinal Nerves C-2

