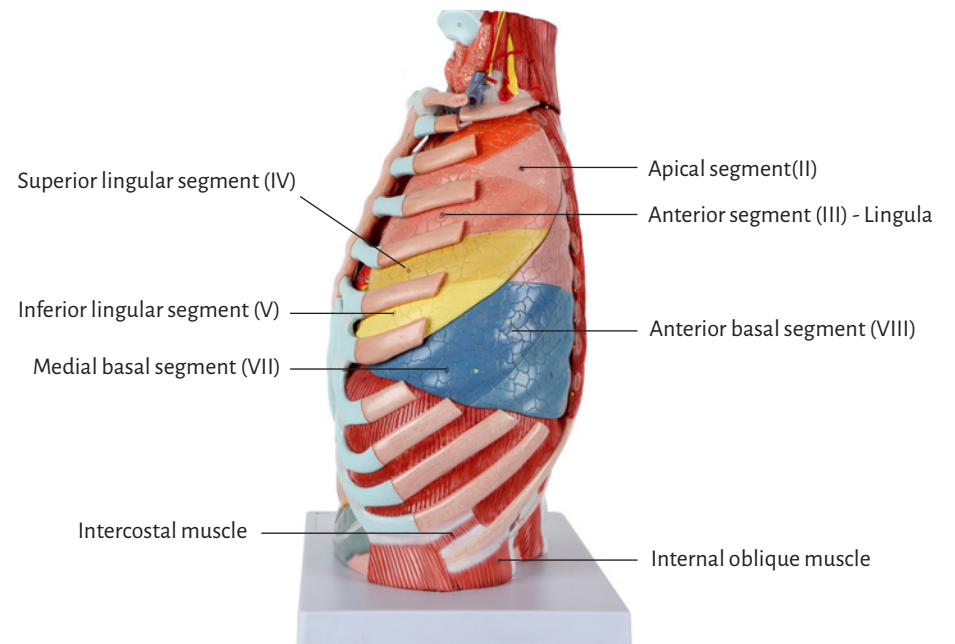
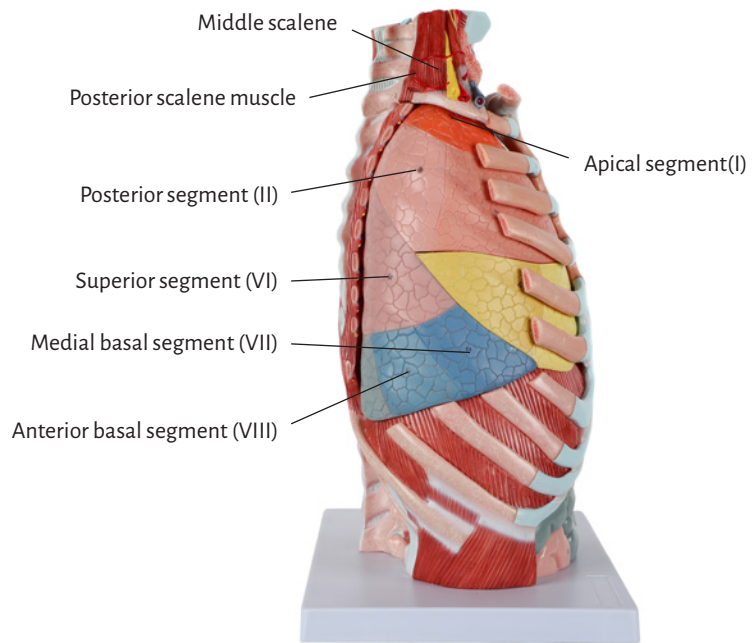
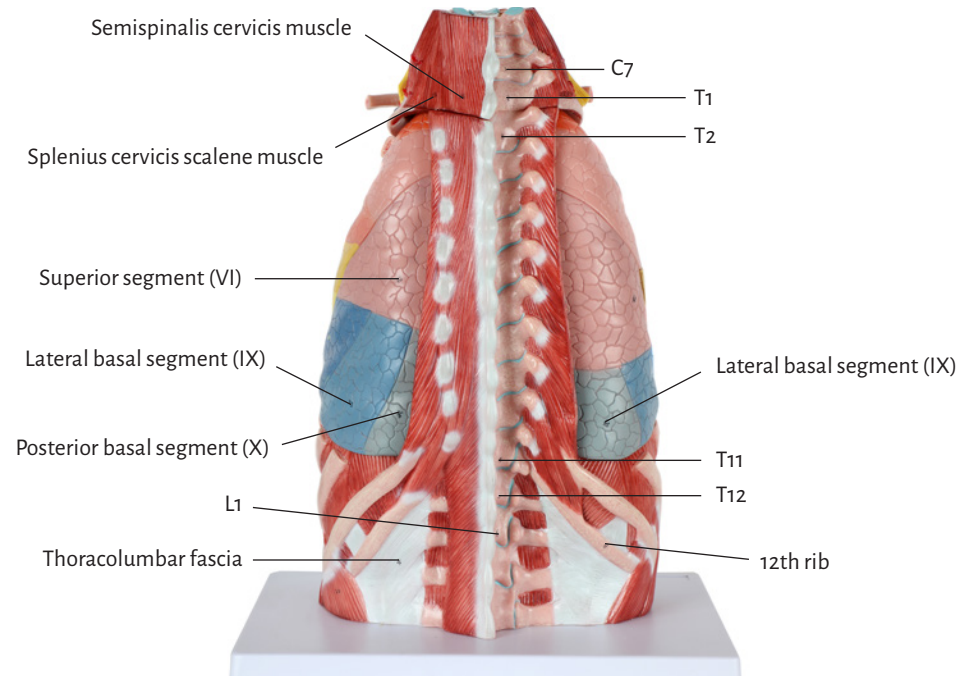
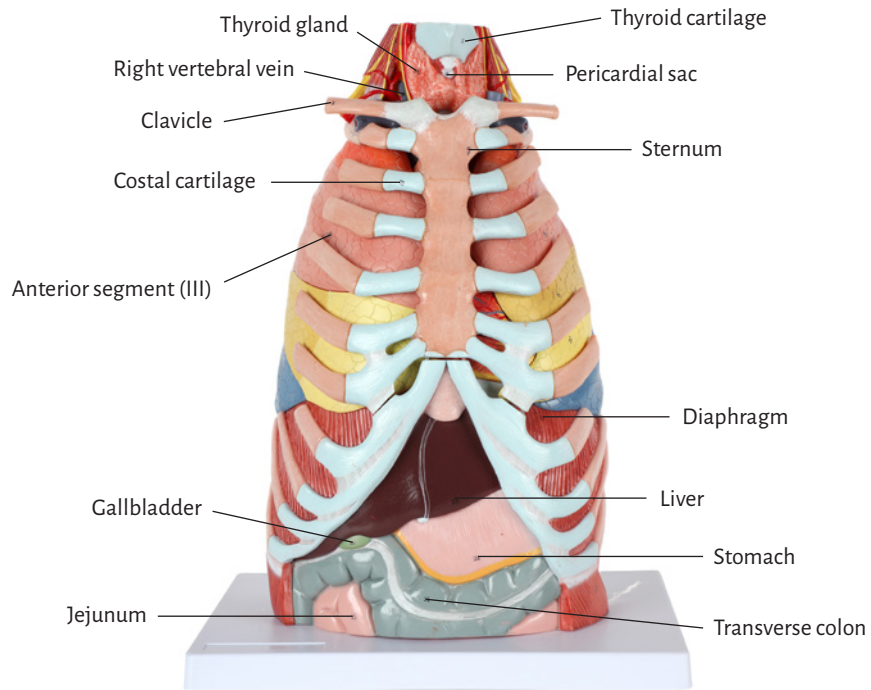
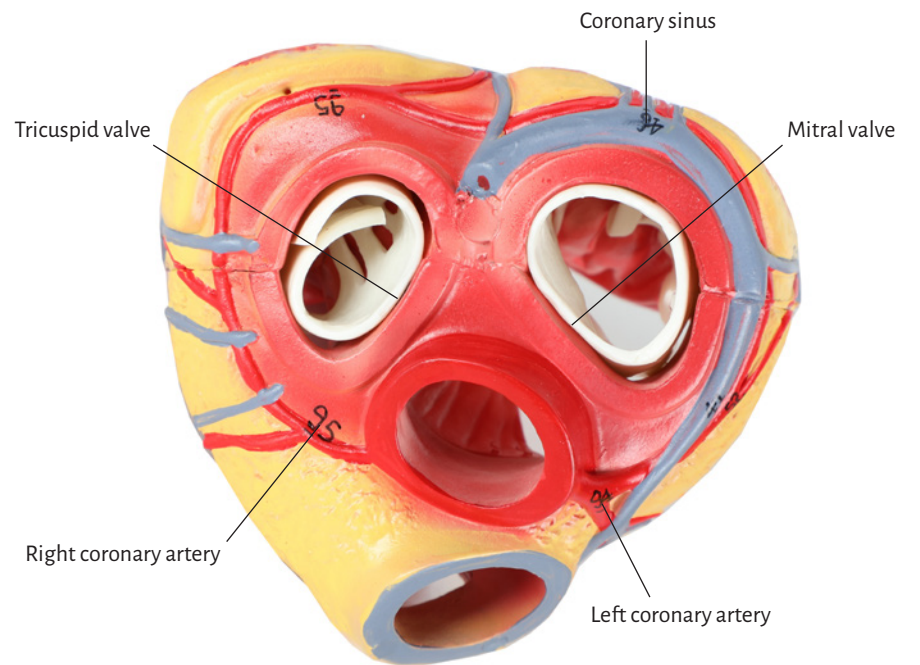
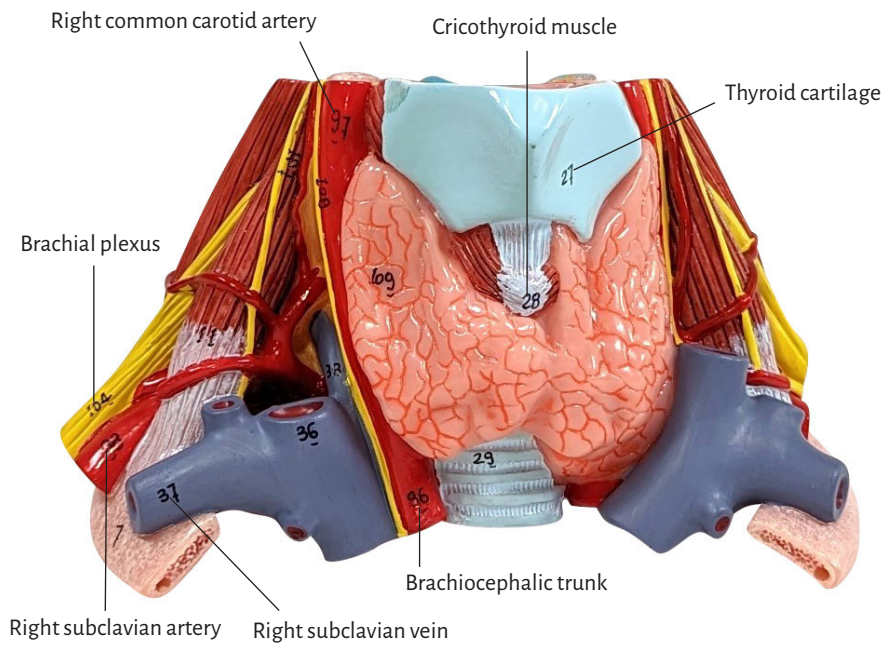
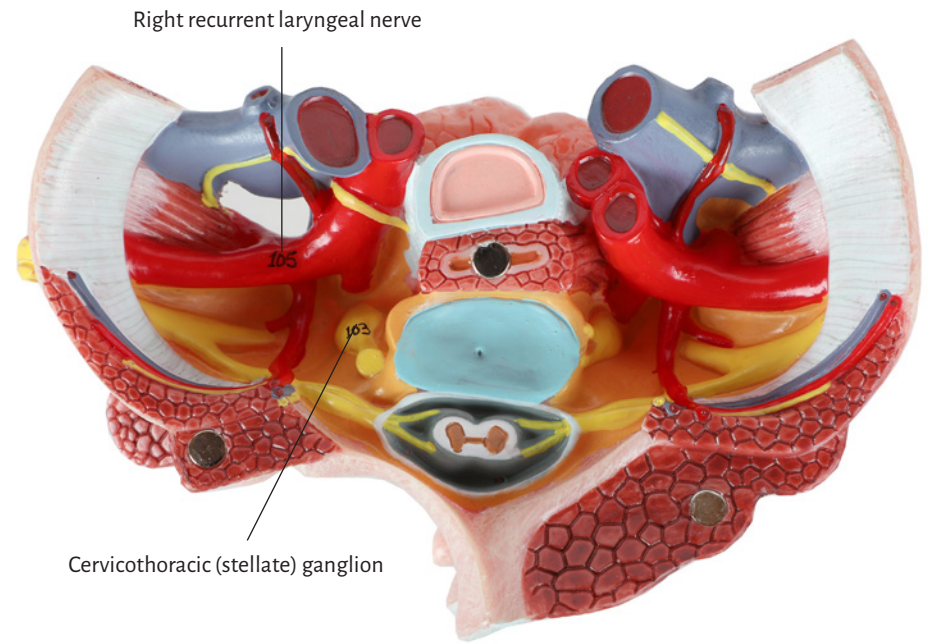
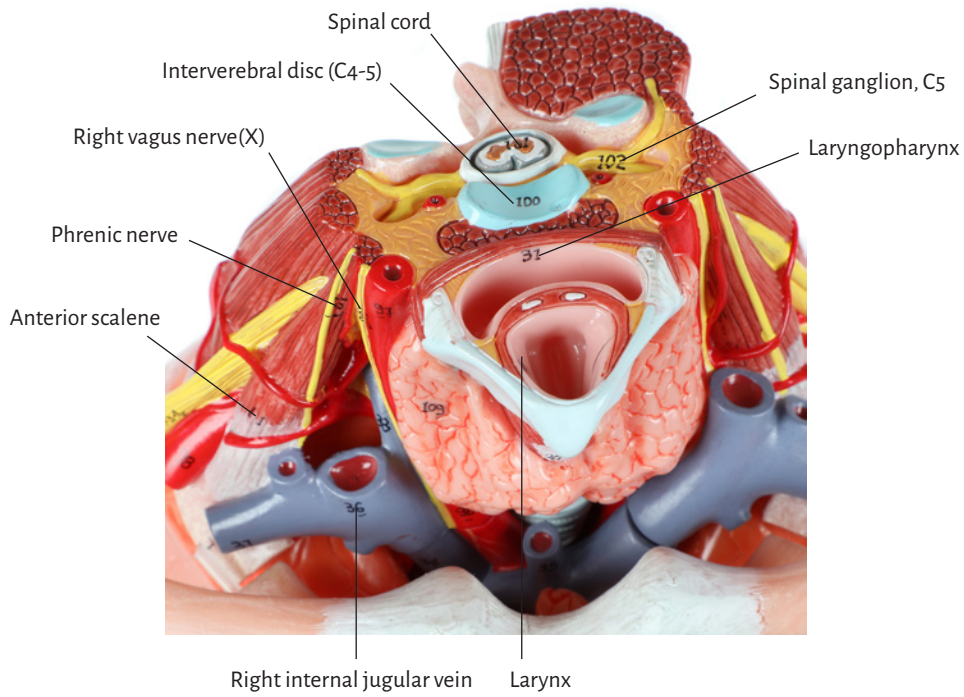
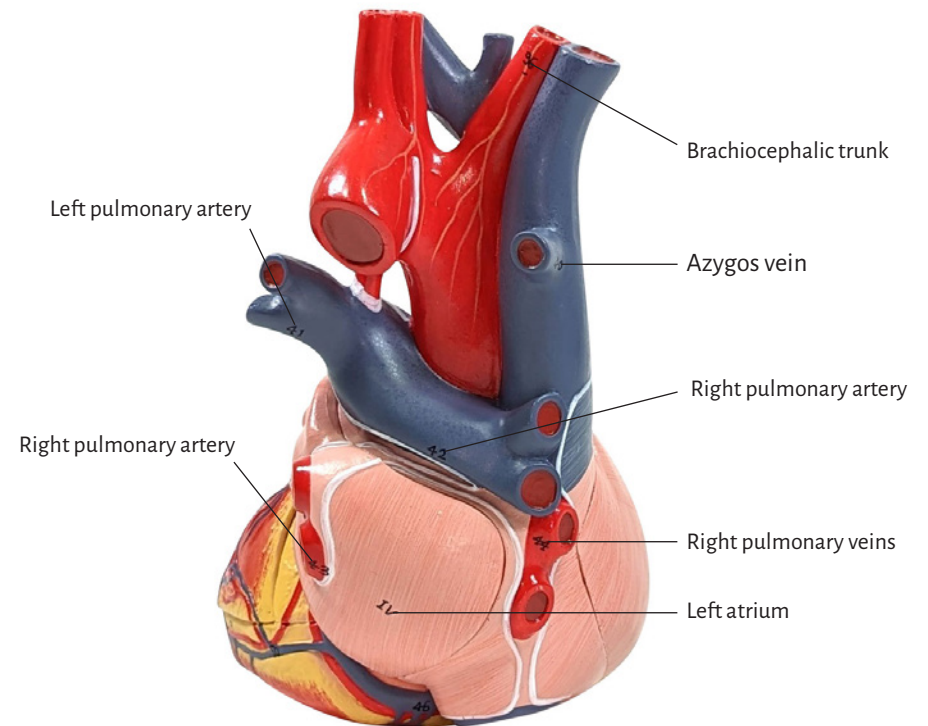
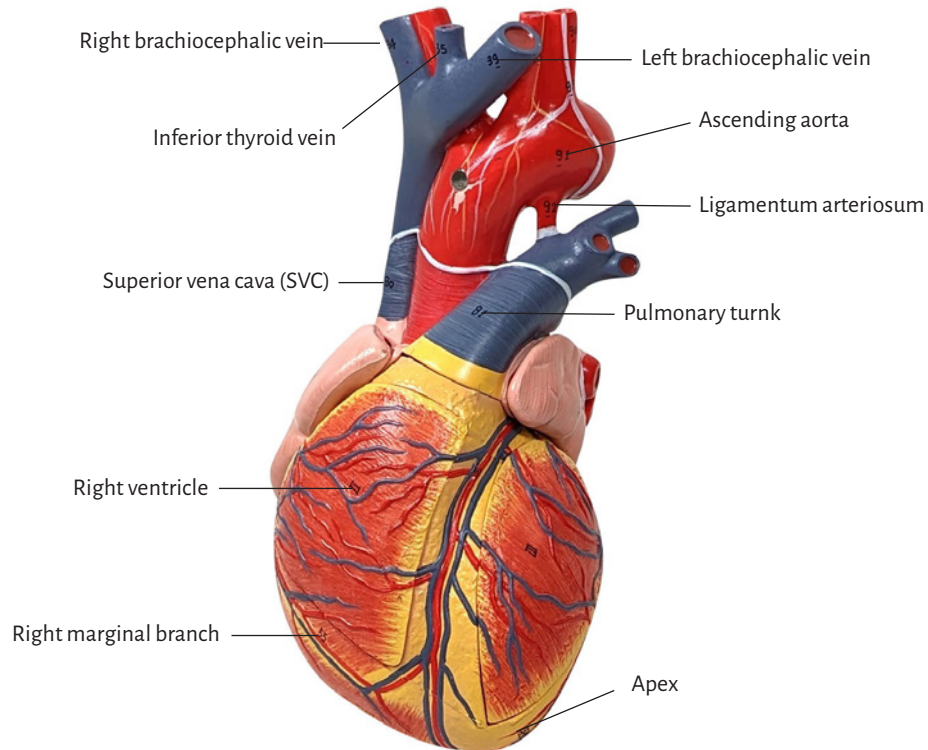
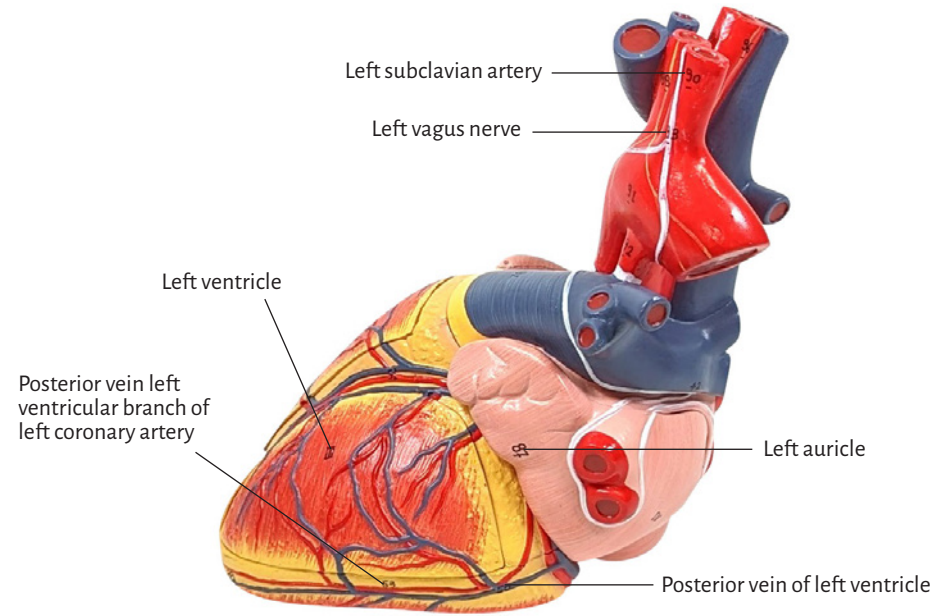
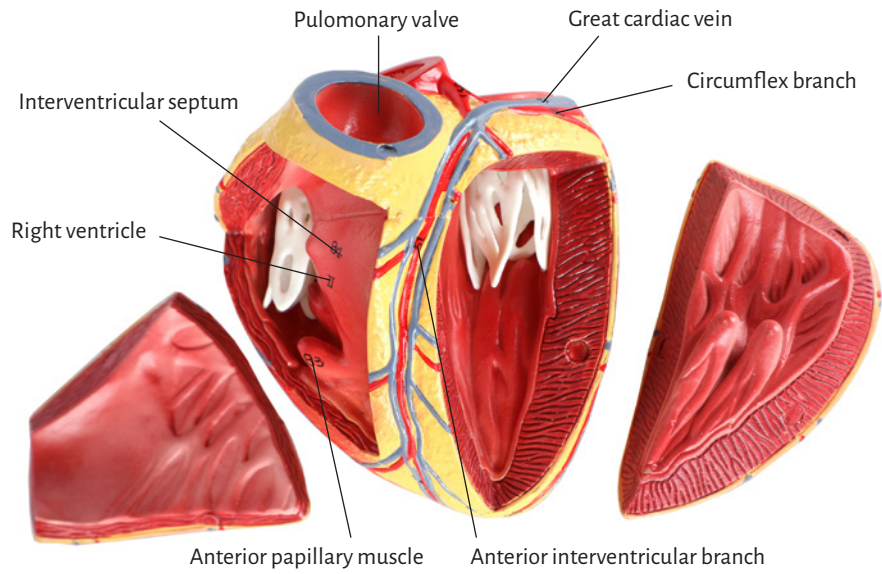


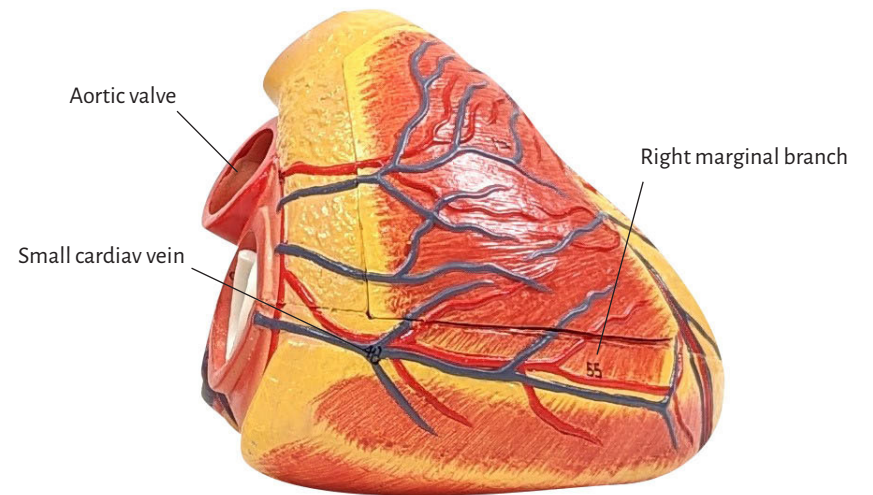
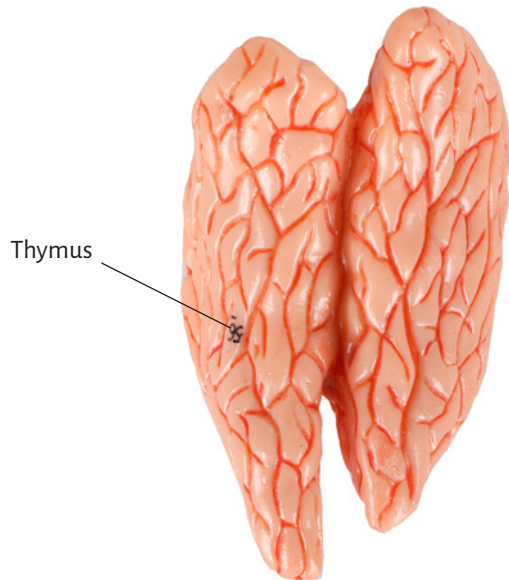
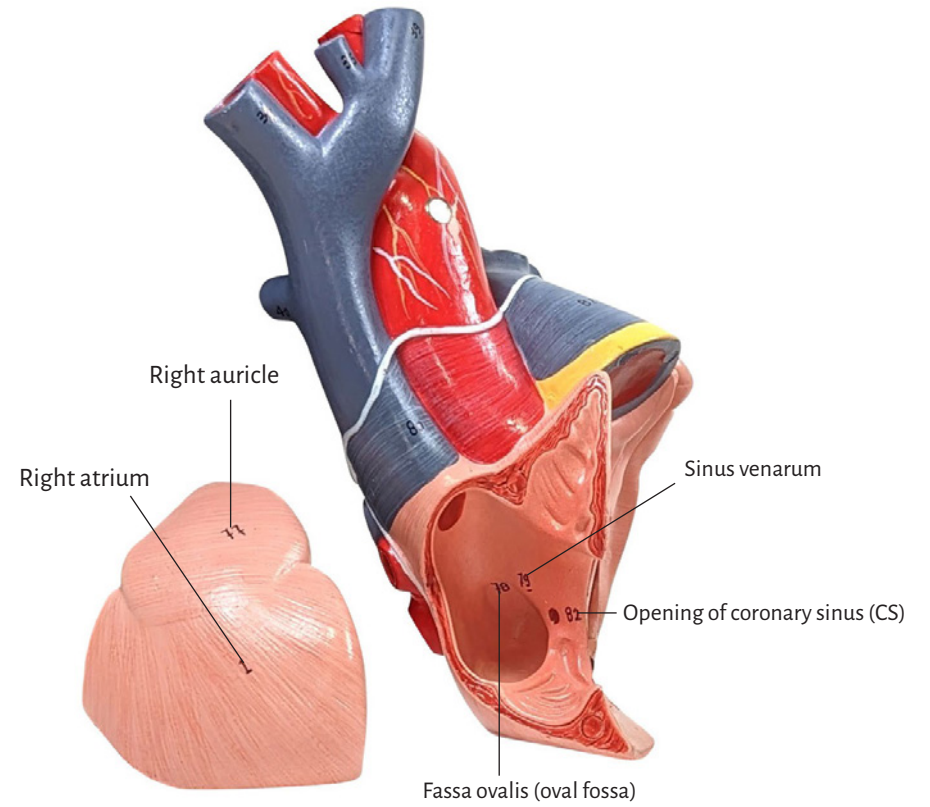
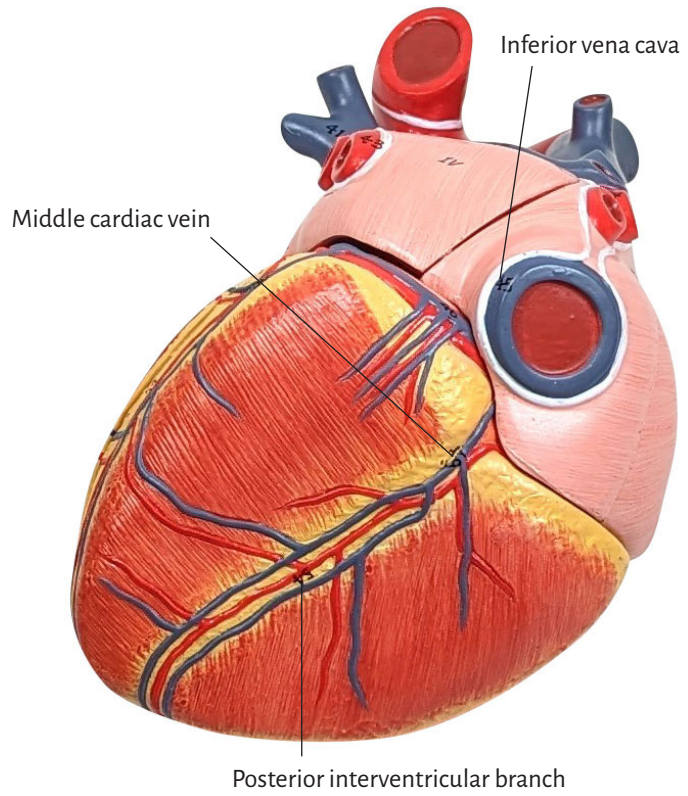
Model of Anatomy Of Tharax, 16 Parts, Natural Size

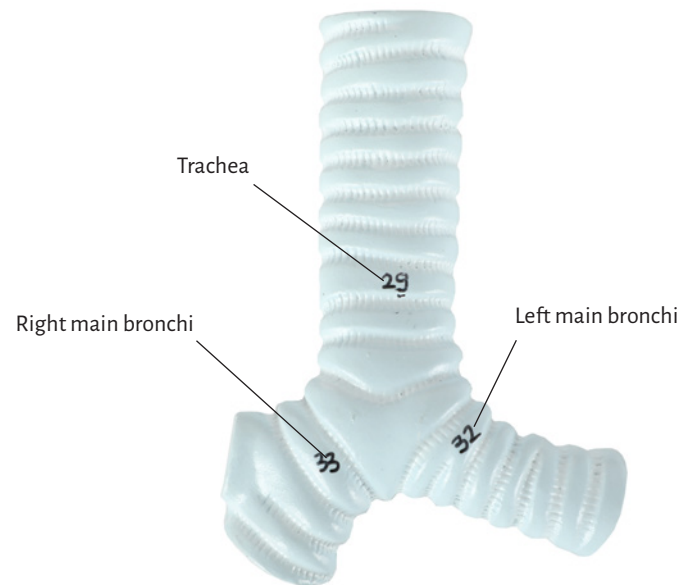
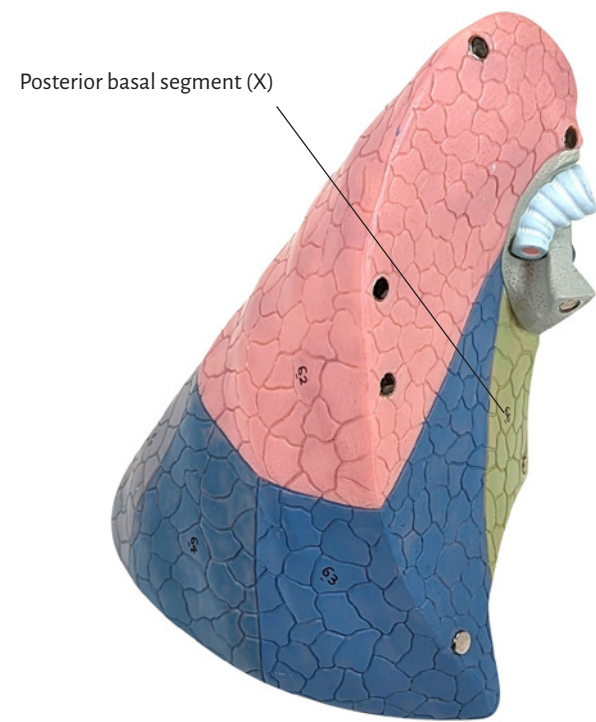
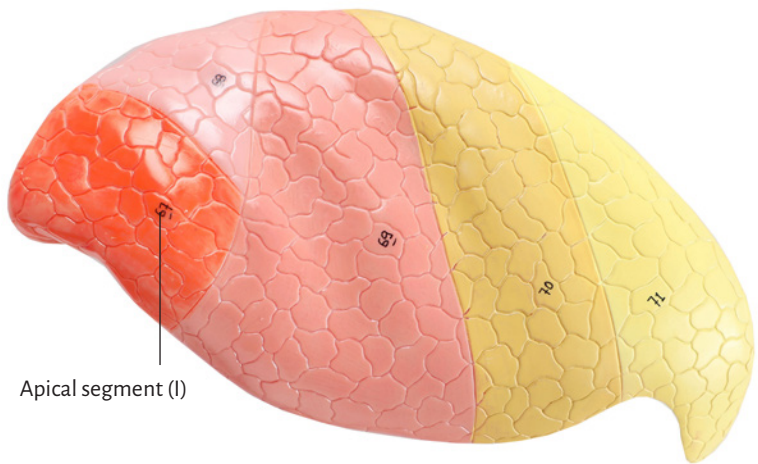
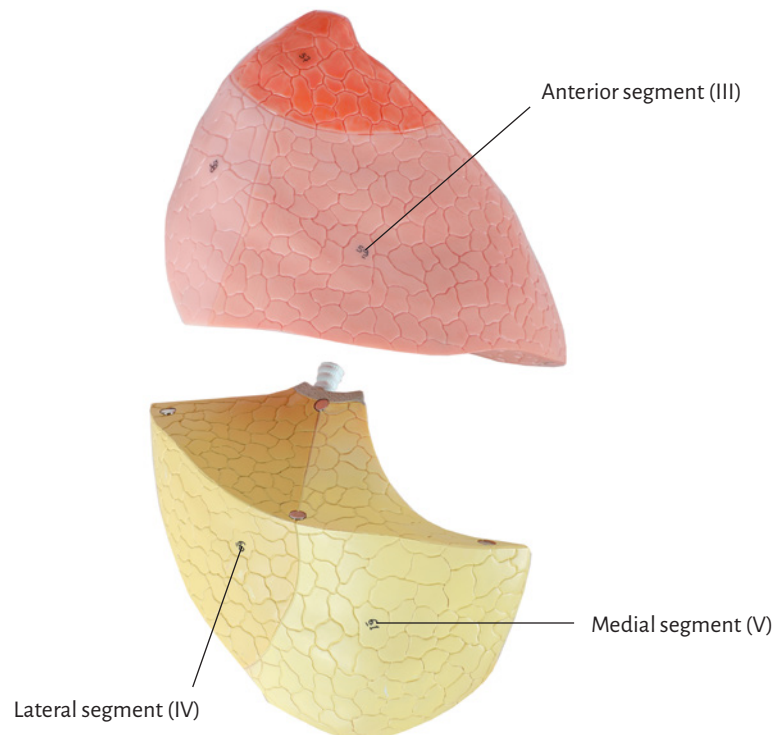
A-111594

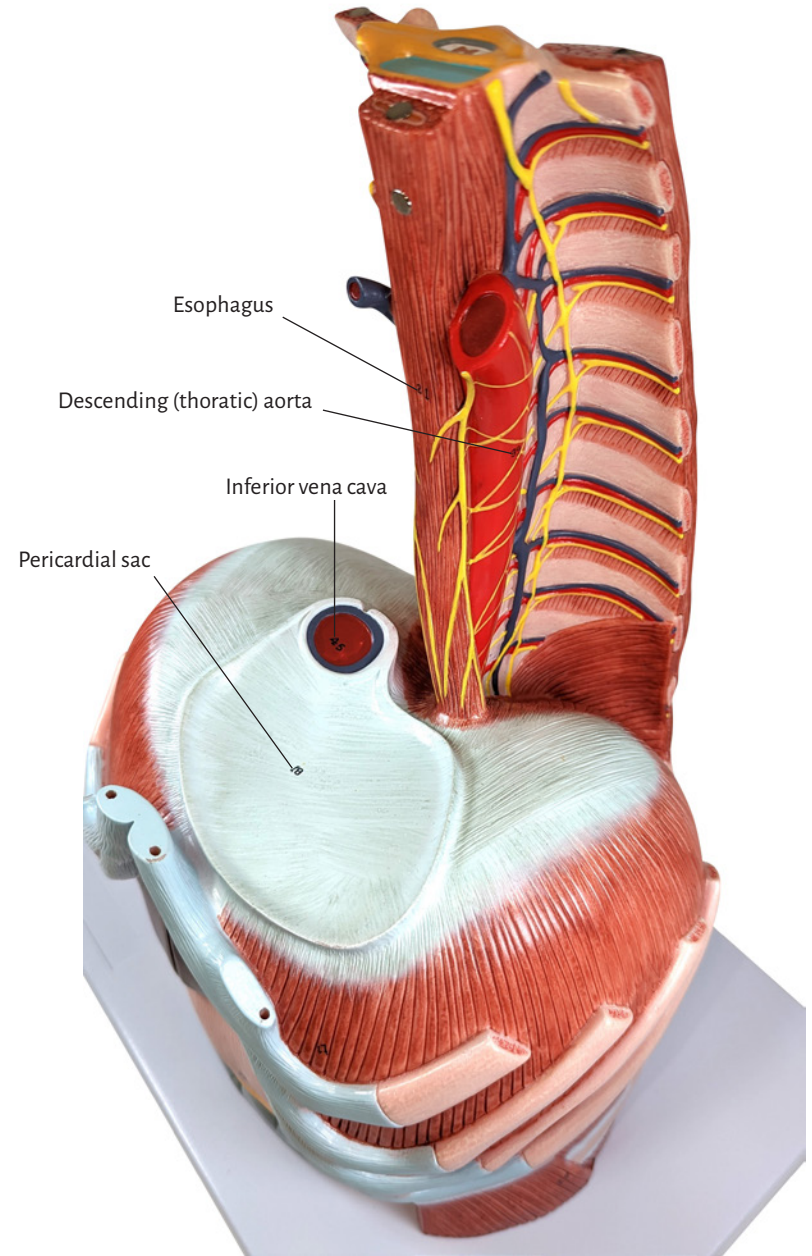
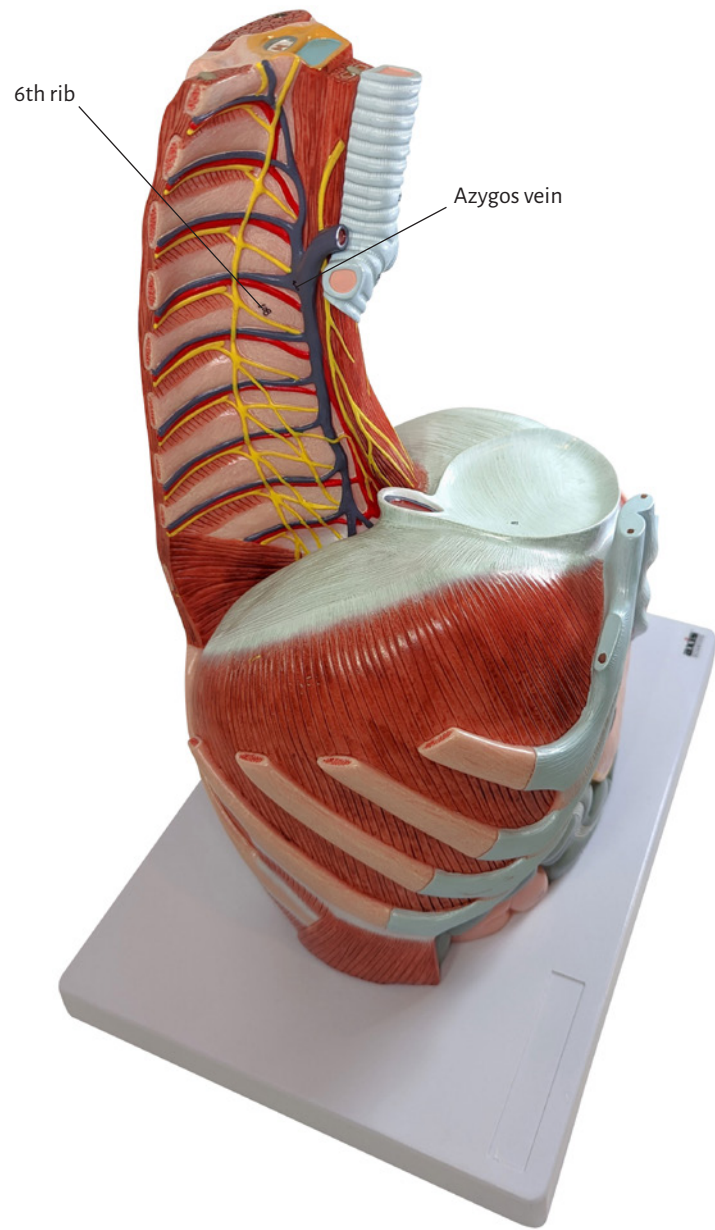












C7	Right main bronchi	Anterior basal segment (VIII)	Left common carotid artery
T1	Right brachiocephalic vein	Lateral basal segment (IX)	Left subclavian artery
T2	Inferior thyroid vein	Posterior basal segment (X)	Ascending aorta
T11	Right internal jugular vein	Apical segment(I)	Ligamentum arteriosum
T12	Right subclavian vein	Apical segment(II)	Left vagus nerve
L1	Right vertebral vein	Anterior segment (III) -Lingula	Left coronary artery
Clavicle	Left brachiocephalic vein	Superior lingular segment (IV)	Right coronary artery
12th rib	Azygos vein	Inferior lingular segment (V) - Inferior lobe	Brachiocephalic trunk
Sternum	Left pulmonary artery	Superior segment (VI)	Right common carotid artery
Costal cartilage	Right pulmonary artery	Medial basal segment (VII)	Right subclavian artery
Anterior scalene	Left pulmonary veins	Anterior basal segment (VIII)	Descending (thoracic) aorta
Middle scalene	Right pulmonary veins	Lateral basal segment (IX)	Intervertebral disc (C4-5)
Posterior scalene muscle	Inferior vena cava	Posterior basal segment (X)	Spinal cord
Semispinalis cervicis muscle	Coronary sinus	Right atrium	Spinal ganglion, C5
Splenius cervicis scalene muscle	Great cardiac vein	Right ventricle	Cervicothoracic (stellate) ganglion
Thoracolumbar fascia	Small cardiac vein	Left ventricle	104. Brachial plexus
Diaphragm	Middle cardiac vein	Left atrium	Right recurrent laryngeal nerve
Pericardial sac	Posterior vein of left ventricle	Aortic valve	106. Right vagus nerve(X)
Intercostal muscle	Anterior interventricular branch	Pulmonary valve	Phrenic nerve
Internal oblique muscle	Circumflex branch	Right auricle	6th rib
Esophagus	Posterior vein left ventricular branch of left coronary artery	Fassa ovalis(oval fossa)	Thyroid gland
Stomach	Posterior interventricular branch	Sinus venarum	
Liver	Right marginal branch	Superior vena cava (SVC)	
Transverse colon	Thymus	Pulmonary turnk	
Jejunum	Apical segment(I)	Opening of coronary sinus(CS)	
Larynx	Posterior segment(II)	Anterior papillary muscle	
Thyroid cartilage	Anterior segment (III) - Middle lobe	Interventricular septum	
Cricothyroid muscle	Lateral segment (IV)	Tricuspid valve	
Trachea	Medial segment (V) - Inferior lobe	Mitral valve	
Gallbladder	Superior segment (VI)	Left auricle	
Laryngopharynx	Medial basal segment (VII)	Apex	
Left main bronchi			