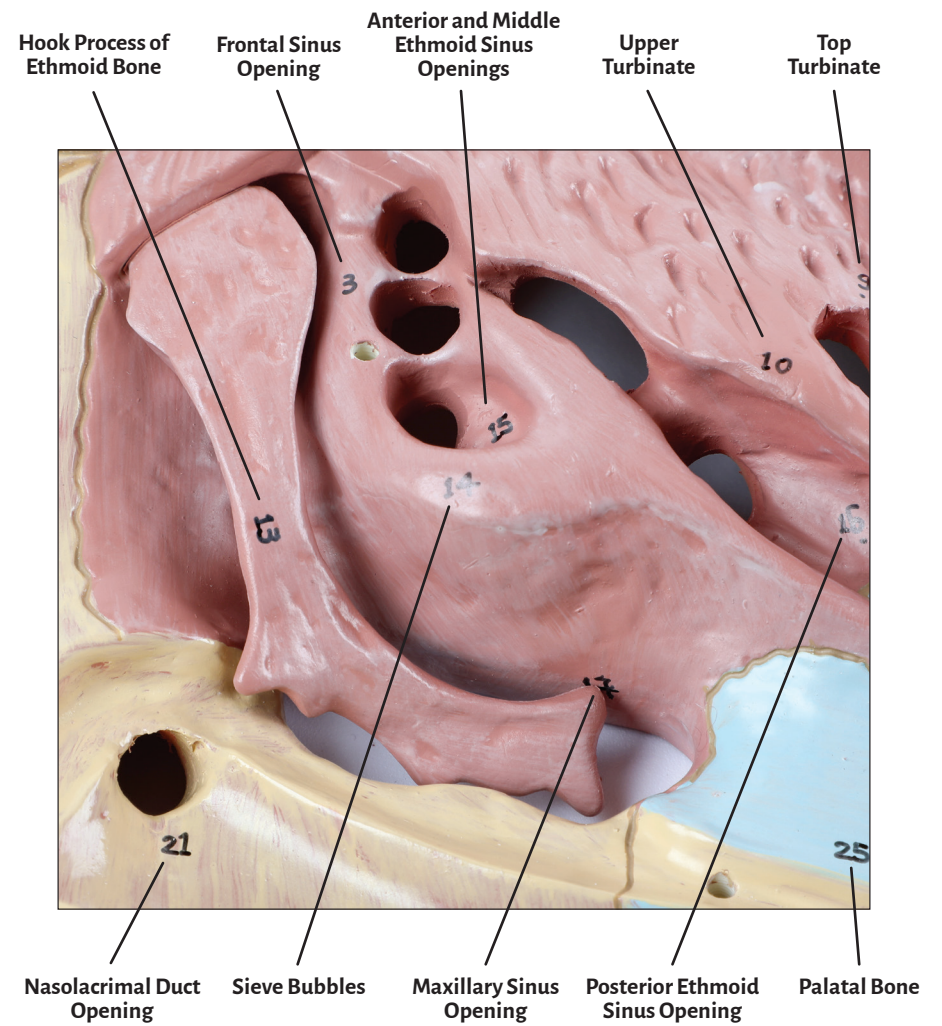
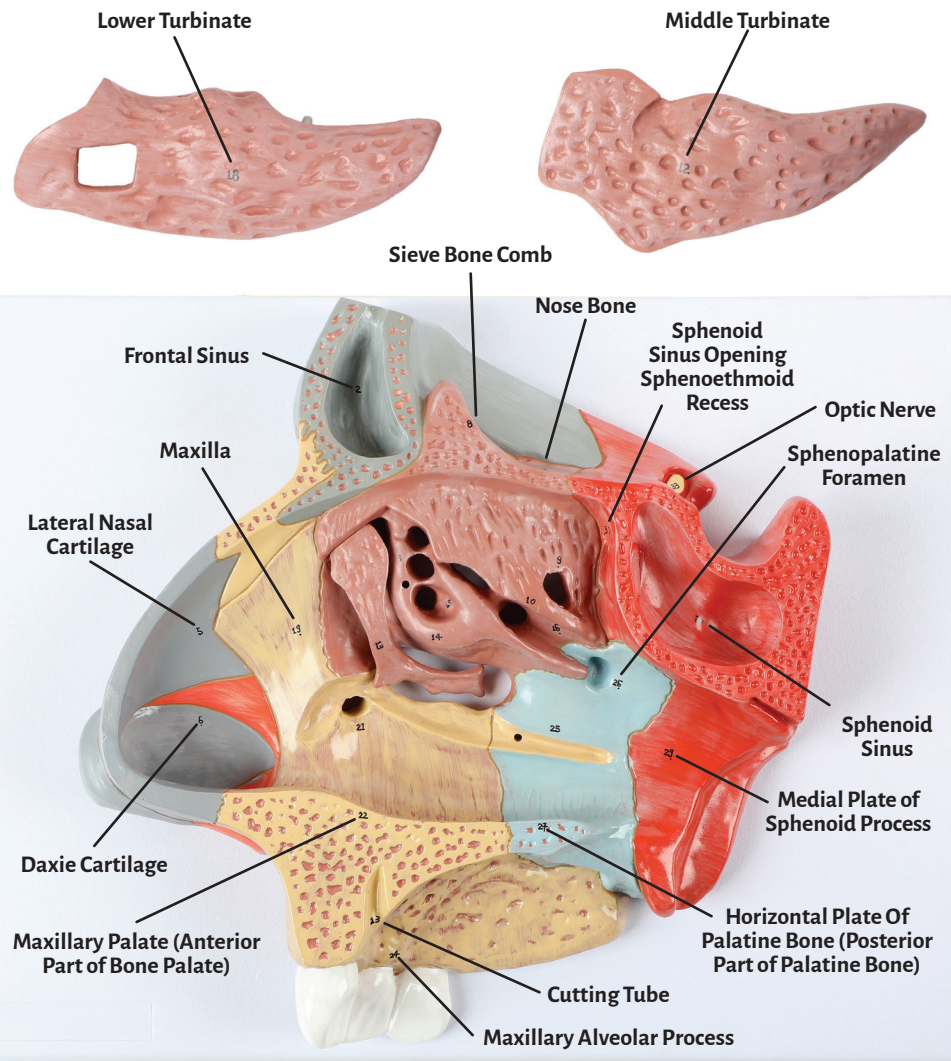
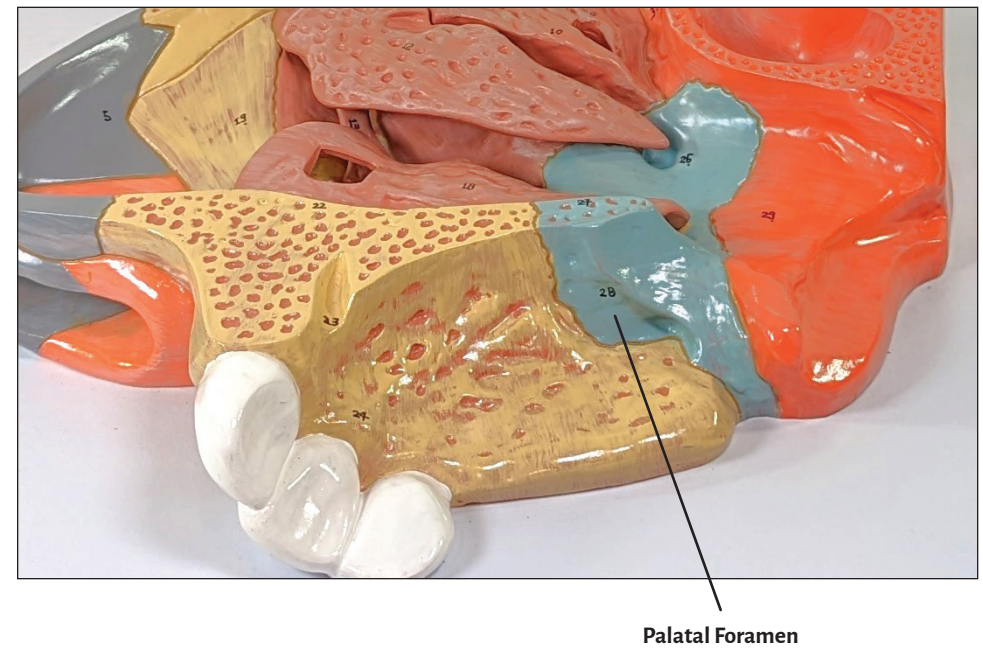
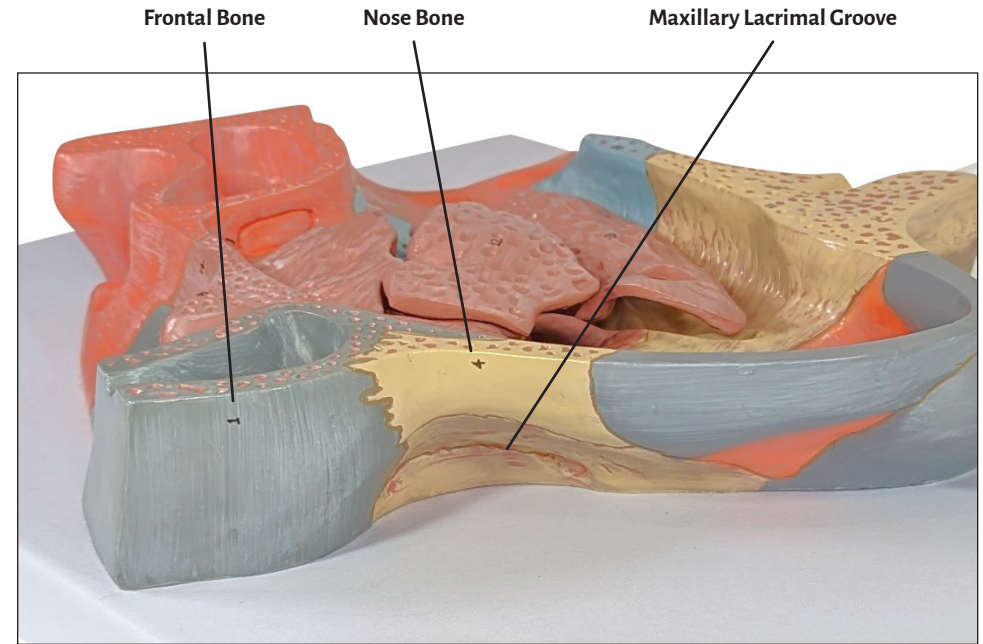
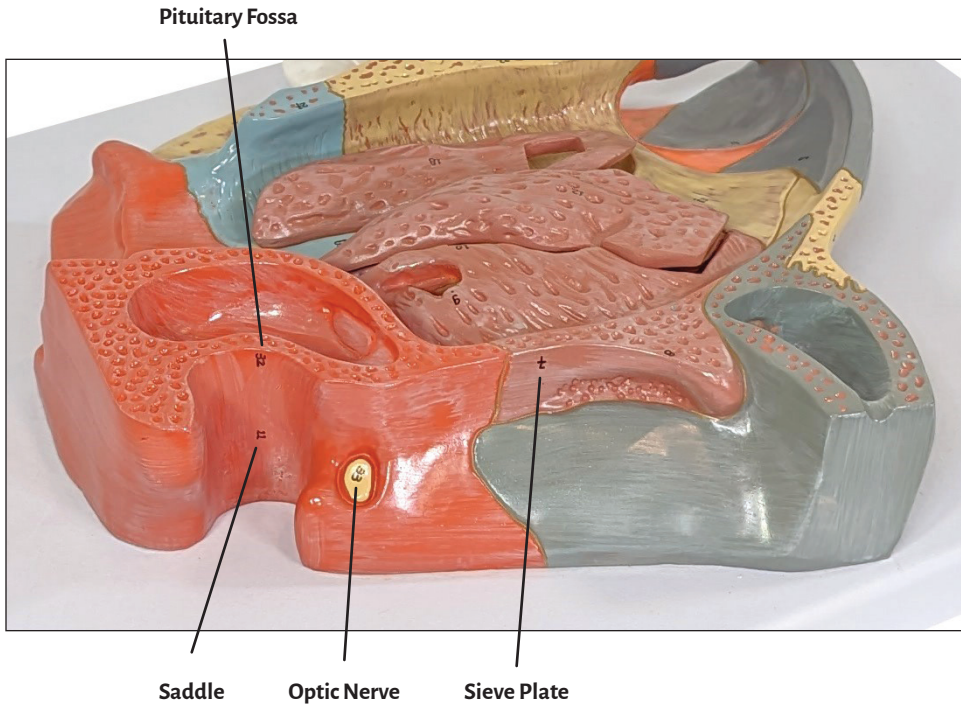


Axis Scientific Enlarged 2-Part Nasal Cavity Anatomy Model

A-111605







Enlarged 2-Part Nasal Cavity Anatomy Model

Frontal bone	Lower turbinate
Frontal sinus	Maxilla
Frontal sinus opening	Maxillary lacrimal groove
Nose bone	Nasolacrimal duct opening
Lateral nasal cartilage	Maxillary palate (anterior part of bone palate)
Daxie cartilage	Cutting tube
Sieve plate	Maxillary alveolar process
Sieve bone comb	Palatal bone
Top turbinate	Sphenopalatine foramen
Upper turbinate	Horizontal plate of palatine bone (posterior part of palatine bone)
Saddle	Palatal foramen
Middle turbinate	Medial plate of sphenoid process
Hook process of ethmoid bone	Sphenoid sinus
Sieve bubbles	Sphenoid sinus opening sphenoethmoid recess
Anterior and middle ethmoid sinus openings	Pituitary fossa
Posterior ethmoid sinus opening	Optic nerve
Maxillary sinus opening	

