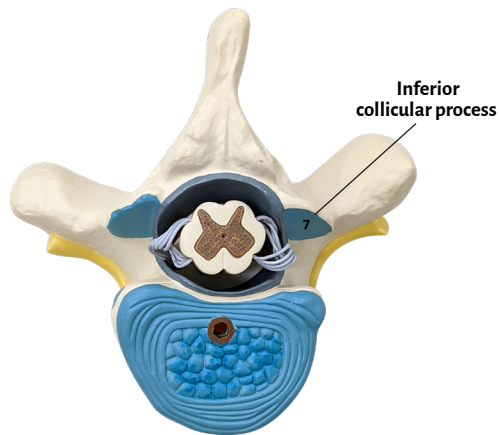
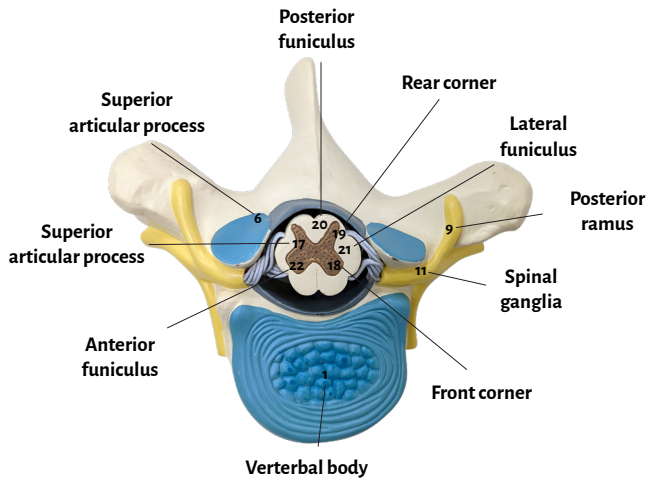
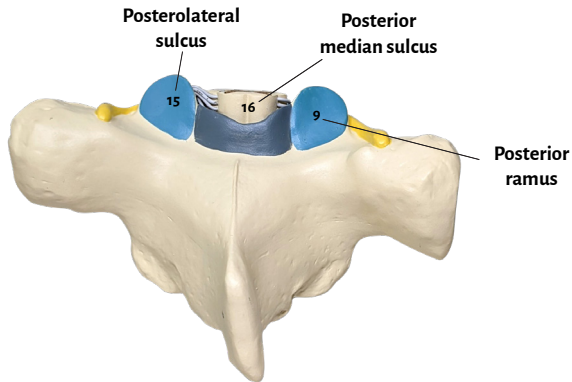
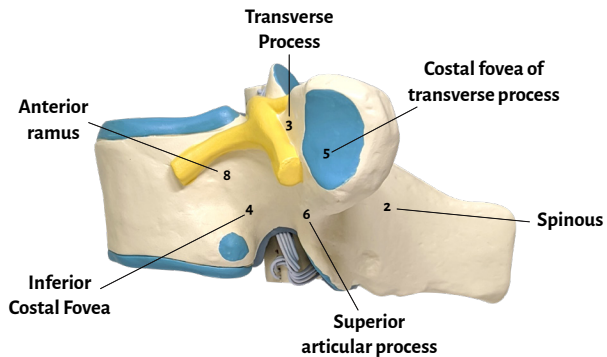


Axis Scientific Thoracic Vertebrae with Spinal Cord and Spinal Nerve

A-111941

Anterior View





Vertebral body

Dura

Spinous

Anterior median fissure

Transverse Process

Anterolateral sulcus

Inferior Costal Fovea

Posterolateral sulcus

Costal Fovea of Transverse process

Posterior median sulcus

Superior articular process

Central management

Inferior collicular process

Front corner

Anterior ramus

Rear corner

Posterior ramus

Posterior funiculus

Transportation branch

Lateral funiculus

Spinal ganglia

Anterior funiculus

