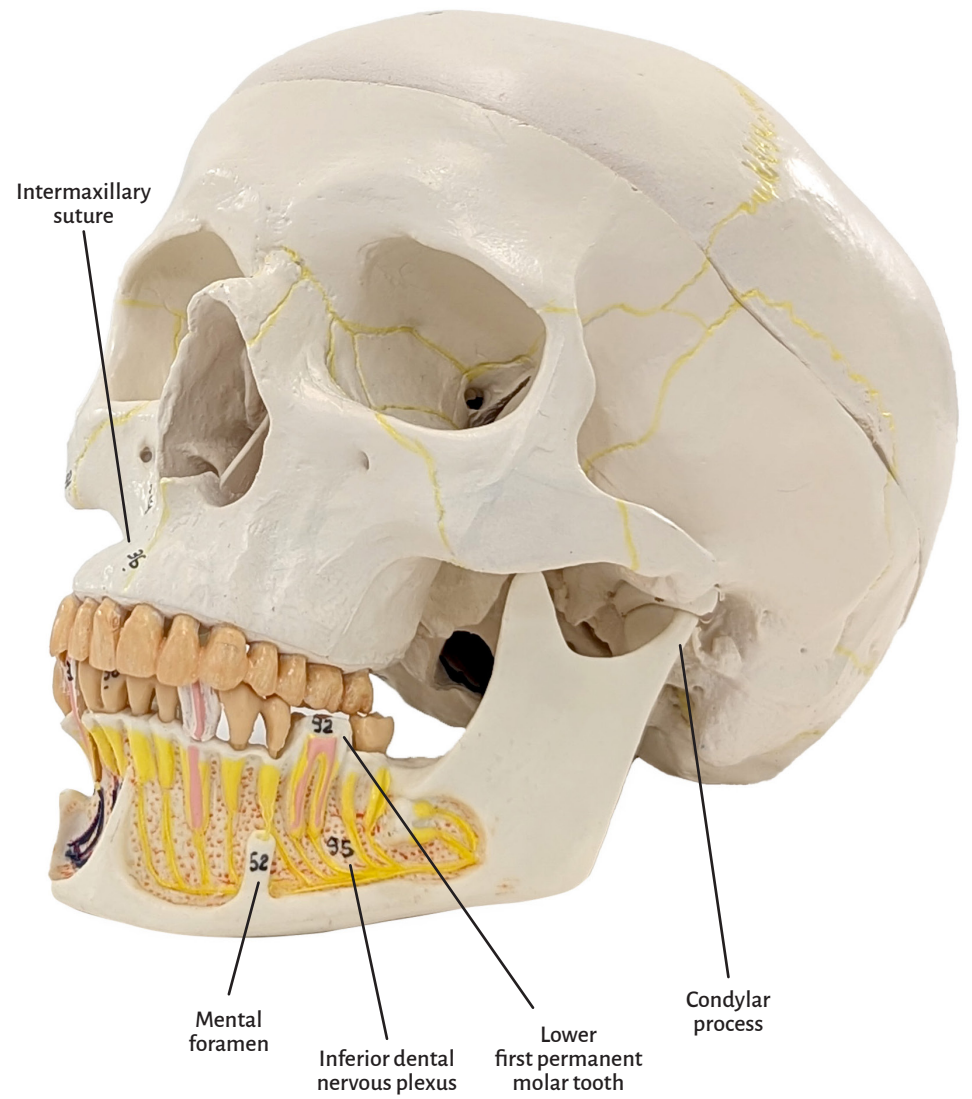
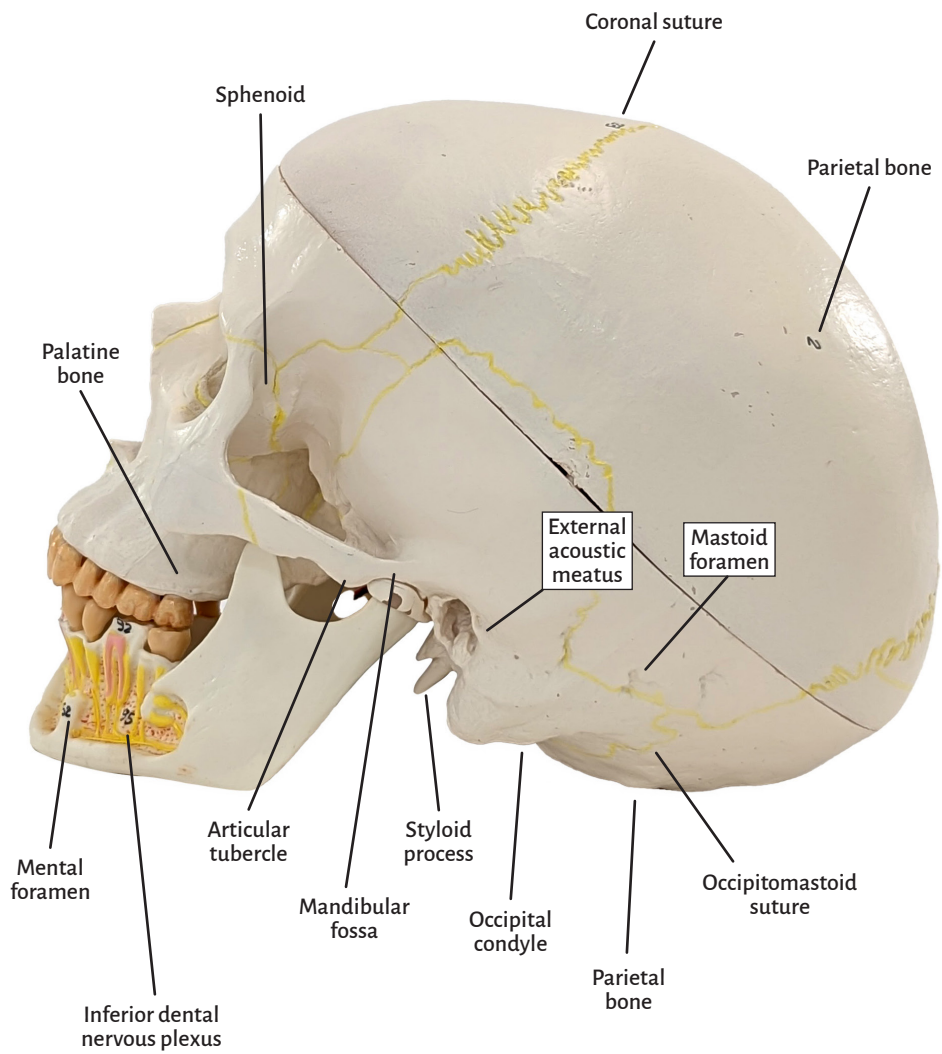




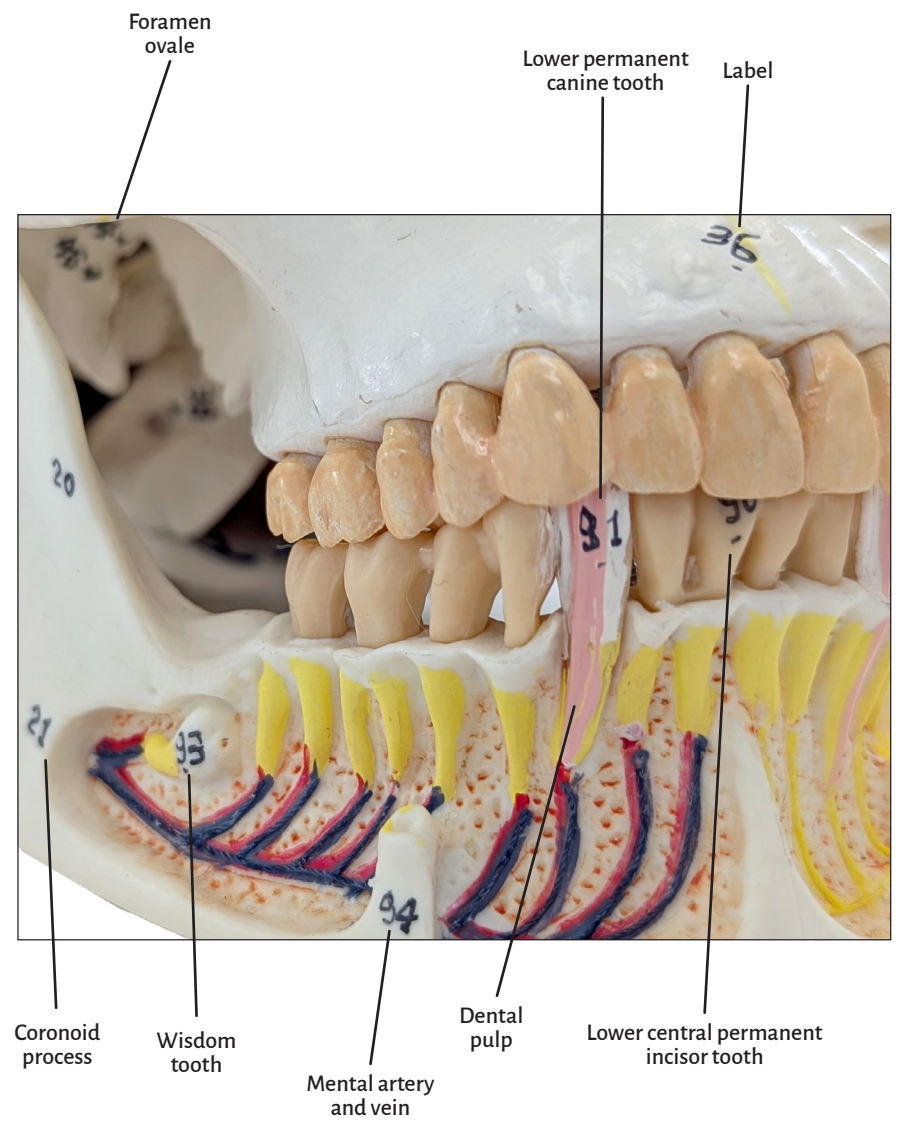
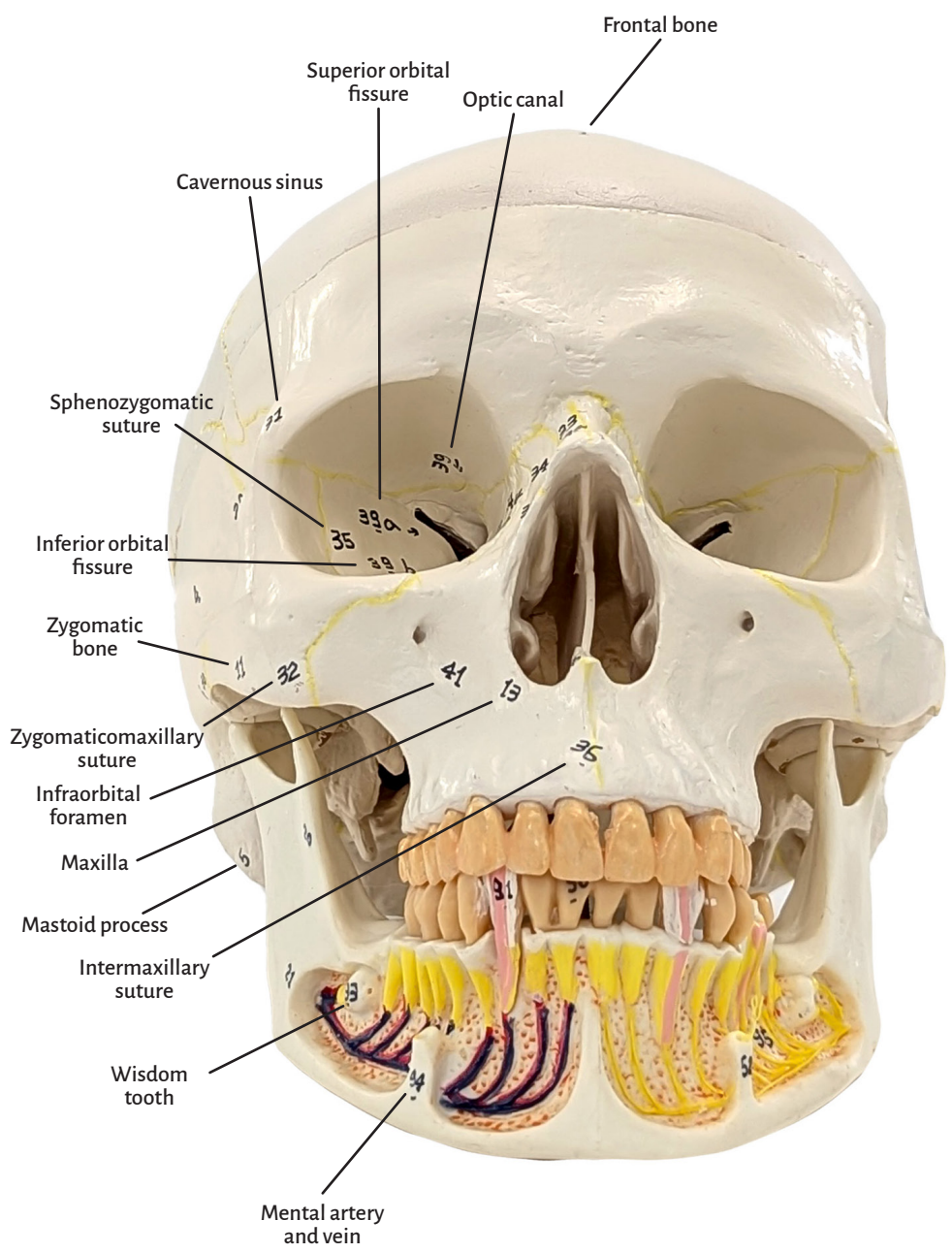
**Axis Scientific Skull with Exposed Mandible, 3-Parts,  
Numbered, Life-Sized**

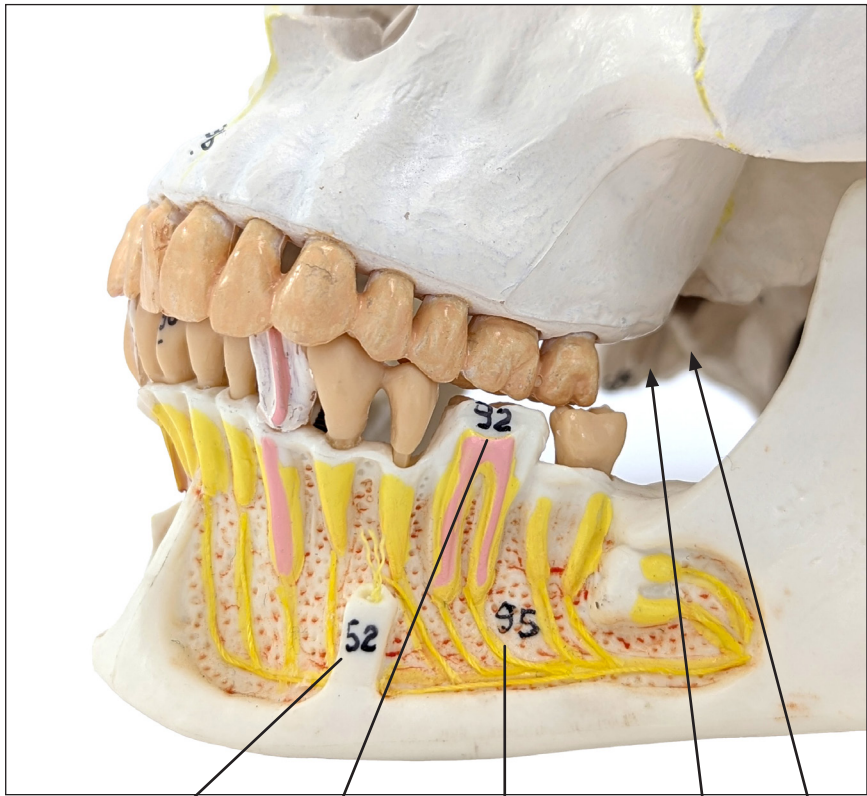
A-112920



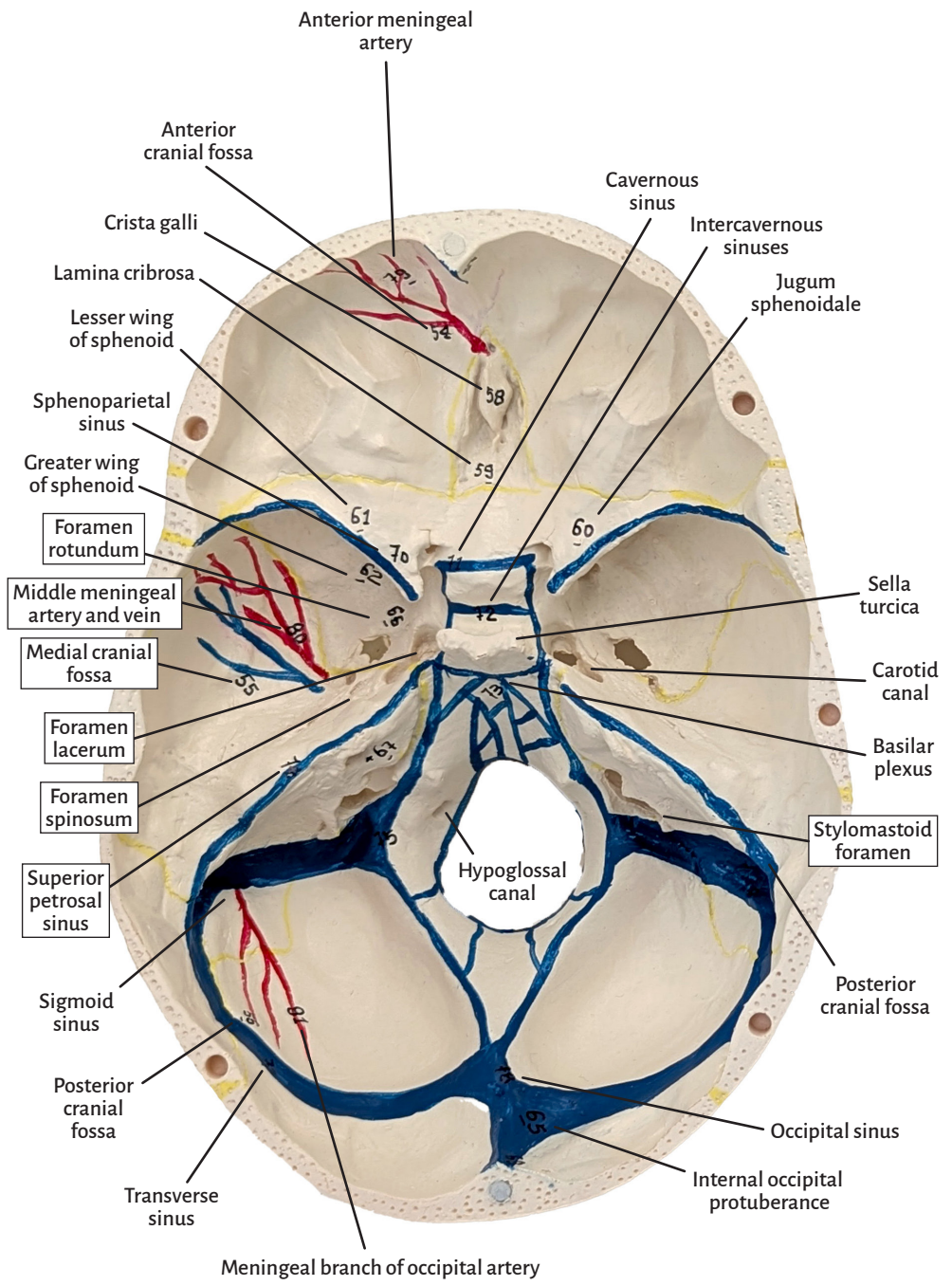






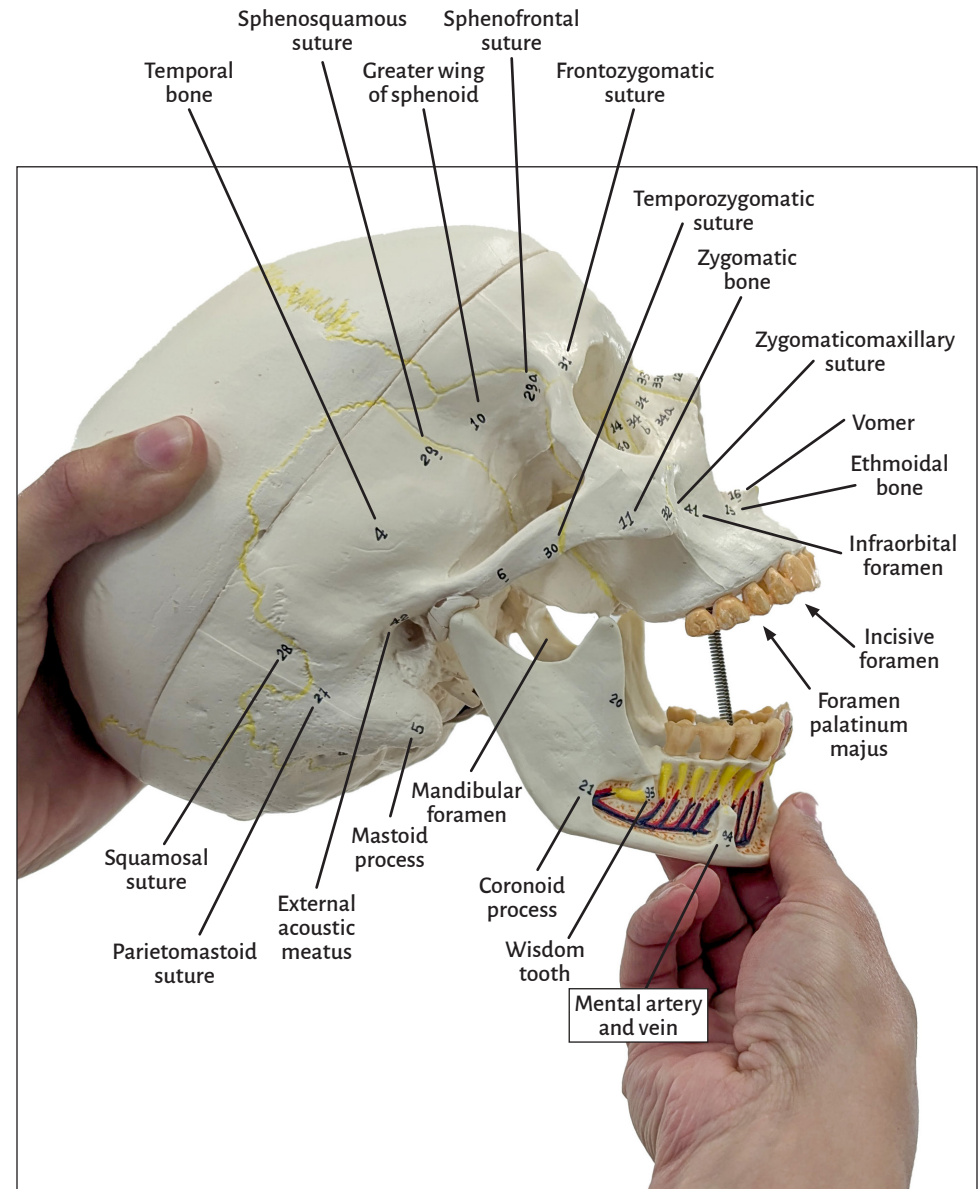
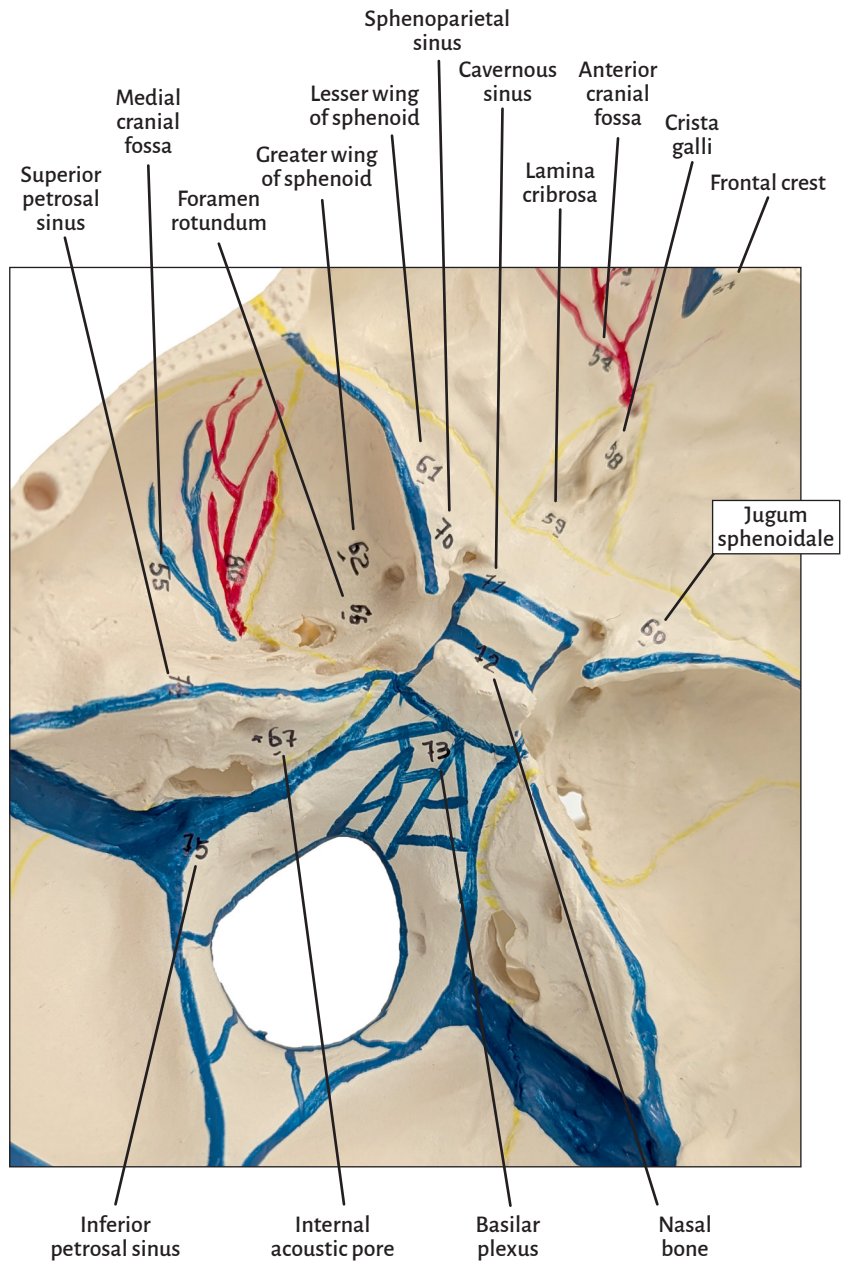


- Mental foramen
- Lower first permanent molar tooth
- Inferior dental nervous plexus
- Transverse palatine suture
- Median palatine suture



- Anterior meningeal artery
- Anterior cranial fossa
- Crista galli
- Lamina cribrosa
- Lesser wing of sphenoid
- Sphenoparietal sinus
- Greater wing of sphenoid
- Foramen rotundum
- Middle meningeal artery and vein
- Medial cranial fossa
- Foramen lacerum
- Foramen spinosum
- Superior petrosal sinus
- Sigmoid sinus
- Posterior cranial fossa
- Transverse sinus
- Meningeal branch of occipital artery
- Cavernous sinus
- Intercavernous sinuses
- Jugum sphenoidale
- Sella turcica
- Carotid canal
- Basilar plexus
- Stylomastoid foramen
- Posterior cranial fossa
- Occipital sinus
- Internal occipital protuberance







## Numbered Human Skull Model

### Exterior view bones

1. Frontal bone
2. Parietal bone
  - 2a. Interparietal bone
3. Occipital bone
4. Temporal bone
5. Mastoid process
6. Zygomatic process
7. Articular tubercle
8. Mandibular fossa
9. Styloid process
10. Greater wing of sphenoid
11. Zygomatic bone
12. Nasal bone
13. Maxilla
14. Lacrimal bone
15. Ethmoidal bone
16. Vomer
17. Palatine bone
18. Sphenoid
19. Occipital condyle
20. Mandible
21. Coronoid process
22. Condylar process

### Cranial sutures

23. Coronal suture
24. Sagittal suture
25. Lambdoid suture
  - 25a. Transverse occipital suture
26. Occipitomastoid suture
27. Parietomastoid suture
28. Squamosal suture
29. Sphenosquamous suture
  - 29a. Sphenofrontal suture
30. Temporozygomatic suture
31. Frontozygomatic suture
32. Zygomaticomaxillary suture
33. Frontonasal suture
  - 33a. Internasal suture
34. Frontomaxillary suture
  - 34a. Nasomaxillary suture
  - 34b. Lacrimomaxillary suture
35. Sphenozygomatic suture
36. Intermaxillary suture
37. Median palatine suture
38. Transverse palatine suture

### Foramina and canals

39. Optic canal
    - 39a. Superior orbital fissure
    - 39b. Inferior orbital fissure
  40. Fossa of lacrimal sac
  41. Infraorbital foramen
  42. External acoustic meatus
  43. Mastoid foramen
  44. Foramen ovale
  45. Foramen spinosum
  46. Foramen lacerum
  47. Carotid canal
  48. Jugular foramen
  49. Stylomastoid foramen
  50. Incisive foramen
  51. Foramen palatinum majus
  52. Mental foramen
  53. Mandibular foramen
- ### Interior view, Cranial base
54. Anterior cranial fossa
  55. Medial cranial fossa
  56. Posterior cranial fossa
  57. Frontal crest
  58. Crista galli

59. Lamina cribrosa
60. Jugum sphenoidale
61. Lesser wing of sphenoid
62. Greater wing of sphenoid
63. Sella turcica
65. Internal occipital protuberance
66. Foramen rotundum
67. Internal acoustic pore
68. Hypoglossal canal

### Sinus of cranial base

69. Superior sagittal sinus
70. Sphenoparietal sinus
71. Cavernous sinus
72. Intercavernous sinuses
73. Basilar plexus
74. Superior petrosal sinus
75. Inferior petrosal sinus
76. Sigmoid sinus
77. Transverse sinus
78. Occipital sinus
79. Anterior meningeal artery
80. Middle meningeal artery and vein
81. Meningeal branch of occipital artery